

NEVER QUIT — HATTERAS



Судостроитель: HATTERAS

Год постройки: 2004

Модель: Катер для спортивной рыбалки

Цена: **ЦЕНА ЯХТЫ ПО ЗАПРОСУ**

Местонахождение: United States

Длина общая: 50' 0" (15.24m)

Ширина: 16' 8" (5.08m)

Мин. осадка: 5' 4" (1.63m)

Крейс. скорость: 29 Kts. (33 MPH)

Макс. скорость: 34 Kts. (39 MPH)

Купить **Never Quit — HATTERAS** а также выбрать подходящую вам яхту из нашего каталога яхт вам поможет опытный яхтенный брокер Андрей Шестаков. На сегодняшний день компания **Shestakov Yacht Sales Inc.** имеет большое количество яхт в собственном списке продаж, а также тесно сотрудничает со всеми крупными яхтенными производителями по всему миру.

Для того чтобы купить яхту **Never Quit — HATTERAS** а также проконсультироваться по любому вопросу связанному с покупкой, продажей, чартером яхт позвоните по телефону **+7(918)465-66-44**.

ОГЛАВЛЕНИЕ

ОГЛАВЛЕНИЕ	2
ХАРАКТЕРИСТИКИ	4
Обзор	4
Основная информация	4
Размеры	4
Скорость, вместимость и масса	4
Размещение	5
Корпус и палуба	5
Информация о двигателе	5
ПОДРОБНОЕ ОПИСАНИЕ	6
Broker's Remarks	6
Accommodations	6
Salon	6
Galley	6
Master Stateroom and Head	6
VIP Stateroom	7
Guest Stateroom and Head	7
Flybridge	7
Electronics and Navigation Equipment	7
Electrical System	7
Cockpit	8
Engine and Mechanical Equipment	8
Deck and Hull	8
Исключения	8
Отказ от ответственности	8
ФОТОГРАФИИ	9
КОНТАКТЫ	14
Контактная информация	14

Телефоны	14
Время работы	14
Адрес	14

ХАРАКТЕРИСТИКИ

Обзор

A Hatteras Yacht does not aspire to offer a luxury. That is simply where they begin. It is beyond that point – and within the experience each voyage offers – that you begin to understand the true Hatteras difference. That difference, for over half a century, has allowed Hatteras to stand as the benchmark of quality and innovation to which all others aspire. “Never Quit” is one of the nicest, if not the Nicest 50’s on the market!! Outstanding example of a very clean 2005 Hatteras. “Never Quit” has had nothing but the best of care and has been continually updated over the years. It offers exceptional fishing and a superb cruising layout. Currently enjoying life in Hope Town and will come to Palm Beach this January. If you are visiting the Bahamas between now and January be sure to call and set an appointment. We can get you aboard easily and look forward to showing you this fine example.

Основная информация

Тип судна: Катер для спортивной рыбалки

Подкатегория: Convertible

Модельный год: 2005

Год постройки: 2004

Страна: United States

Размеры

Длина общая: 50' 0" (15.24m)

Ширина: 16' 8" (5.08m)

Мин. осадка: 5' 4" (1.63m)

Скорость, вместимость и масса

Крейс. скорость: 29 Kts. (33 MPH)

Макс. скорость: 34 Kts. (39 MPH)

Водоизмещение: 60000 Pounds

Вместимость воды: 184 Gallons

Вместимость сточного бака: 85 Gallons

Объем топливного бака: 1060 Gallons

Размещение

Всего кают: 3

Спальные места: 6

Корпус и палуба

Материал корпуса: Fiberglass

Информация о двигателе

Двигатели: 2

Производитель: CAT

Модель: C18

Тип двигателя: Inboard

Тип топлива: Diesel

ПОДРОБНОЕ ОПИСАНИЕ

Broker's Remarks

A Hatteras Yacht does not aspire to offer a luxury. That is simply where they begin. It is beyond that point – and within the experience each voyage offers – that you begin to understand the true Hatteras difference. That difference, for over half a century, has allowed Hatteras to stand as the benchmark of quality and innovation to which all others aspire. “Never Quit” is one of the nicest, if not the Nicest 50’s on the market!! Outstanding example of a very clean 2005 Hatteras. “Never Quit” has had nothing but the best of care and has been continually updated over the years. It offers exceptional fishing and a superb cruising layout. Currently enjoying life in Hope Town and will come to Palm Beach this January. If you are visiting the Bahamas between now and January be sure to call and set an appointment. We can get you aboard easily and look forward to showing you this fine example.

Accommodations

This extraordinary 50' Hatteras is a MUST SEE. Her oversize cockpit and tournament style helm make operation and functionality simple. She features a low profile galley with abundant storage throughout. Below are three staterooms with the master being amidships and VIP is forward with centerline queen berth. Guest stateroom with upper/lower berths is to port. Three are two heads with the master being ensuite, and a full laundry center below as well. All wood throughout is high-gloss cherry wood.

Salon

Hunter Douglas window blinds Custom coffee table with inlay and storage Ship's electrical panel aft to port Amtico teak and holly salon entrance Barrel chair L-shaped leather settee with storage underneath New 42" Samsung LCD TV- 2017 New 2017 Sony receiver - str DN1076 Sony Blu Ray player Apple TV Stereo with surround sound Carpet runner Reupholstered sofa seating and chair

Galley

L-shaped dinette 2 drawer Sub-zero refrigerator, under counter 2 drawer sub-zero freezer and ice maker, under counter Sharp Carousel microwave / convection oven Forceio 2-burner cooktop Garbage disposal Corian counters and dinette table top Drawer storage below and shelf storage above Teak and holly galley sole

Master Stateroom and Head

Located amidship to starboard and has an ensuite head: Queen berth with storage below, cedar lined Cherry credenza outboard storage Reading lamps Cedar lined hanging locker Sharp 20" flat screen TV Access to ensuite head Full length mirror **MASTER STATEROOM HEAD:** Molded corian countertops Mirrored vanity above Teak and holly sole Freshwater Vacu-Flush head Stall shower Linen closet Mirrored ceiling upgrade

VIP Stateroom

The VIP stateroom is located forward in the boat and the berth is centerline queen. There is also a private access to guest head. Centerline queen berth, cedar lined and lifts for storage Overhead hatch with shade Cedar lined hanging lockers, port and starboard and one in companionway Reading lamps Sharp flat screen TV Central VAC

Guest Stateroom and Head

Upper and lower twin bunks Reading lamps Whirlpool stackable washer and dryer **GUEST HEAD:** Molded Corian countertops Teak and holly sole Mirrored ceiling Fresh water Vacu-flush head Mirrored vanity Stall shower Access from both guest cabins and companionway

Flybridge

Centerline helm 4 quarts lights molded into hartop Mechanical gauge package Helm pod with single lever controls Power steering Molded in overhead lights, red and white (3) sided enclosure with Strataglass (New 11/14) Aft rail rocket launcher 7 rods Molded in navigation lights Flush mounted electronics with clear cover over electronics 2 Murry Bros helm chairs with 4" stainless pedestal- refinished in 2016 Pipewelders double spreader outriggers and center rigger Hatteras alarm monitor panel Insulated drink box - starboard Storage under seating both in front of helm and down starboard side Newly upholstered seating

Electronics and Navigation Equipment

New Garmin autopilot 12/15 Furuno NavNet system Icom 602 VHF VHF #2 new std Horizion 6x 5505- 1/15 8" Ritchie compass Full analog gauge package ACR EPIRB New Garmin 7215 Helm- 2015 New Garmin 6212 Cockpit- 2015 Video engine room to helm CAT monitors to Garmin helm Garmin GSD 26 chip sounder Garmin 6xm xm weather Garmin wi-fi Rogue wi-fi booster 2016 All new antenna's hard top Fushion MSUD750 Bluetooth Amp- sub 6 speakers KVH tracvision, New TV5 & all new direct receivers 7/16

Electrical System

50 amp single shore power 220v shore cord with Glendenning cable master 110 AC 12 / 24 DC

17 kw Onan generator with sound shield Central bonding system Master Volt battery charger

Cockpit

Completely repainted and non-skid 2016 6 Rod holders in covering boards 4 cleaning rod holders in house pilasters Engine room access Fresh and saltwater washdown Transom door with flip up gate lid Murry Brothers fighting chair- reupholstered and refinished in 2016 Floor mounted fishbox with macerator and with ice feed from ER Cockpit freezer Tackle storage port and starboard Cockpit stereo speaker Indirect cockpit lighting

Engine and Mechanical Equipment

Twin Caterpillar C-18 engines rated at 1015 HP each. Onan 17 kw Generator Aqua wisper water maker- rebuilt and upgraded at 75gph- 2016 Engine room fans Power assist steering system Oil change system Racor primary fuel filters, dual FM200 fire system Dripless shaft seals with spares on shafts AC / DC lighting throughout Shore cord Cablemaster - Glendenning Fuel priming system Battery charging system Exhaust blowers High water alarm Water separator muffler for generator New Eskimo ice chipper to fishbox model E1540 10/16

Deck and Hull

Molded Pipewelders hardtop White hull color Blue bottom paint Aluminum bow rail Bow pulpit Maxwell windlass with 500 3/4 braided nylon Trim tabs Molded in navigation lights Transom door with lift gate 2x new Underwater lights- LED Lumishole Blue 10/15 Revere 6 man life raft

Исключения

При продаже яхты исключаются личные вещи владельца.

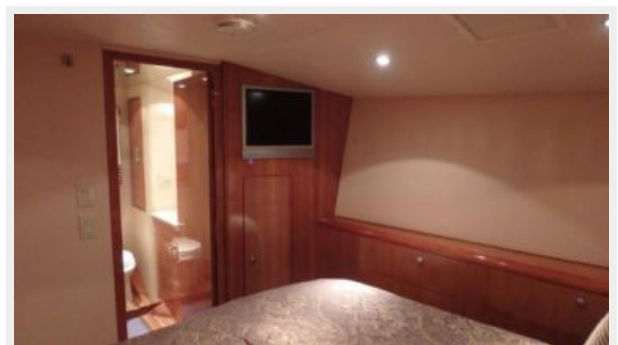
Отказ от ответственности

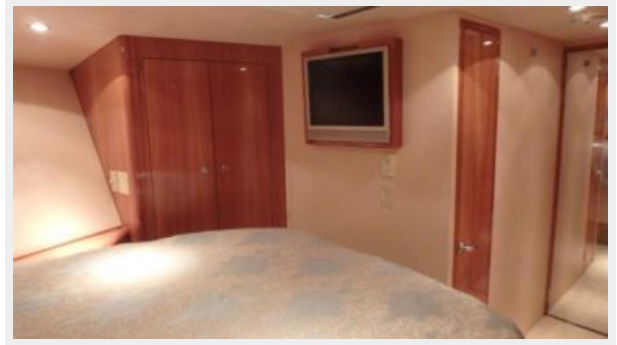
Компания предоставляет описание судна или яхты добросовестно, но не может гарантировать точность этой информации, а также не ручается за техническое состояние. Покупатель должен проинструктировать своих агентов или оценщиков исследовать представленную информацию более подробно, по собственному желанию. Продажа судна или яхты, изменение цены или снятие с продажи будет происходить без предварительного уведомления.

ФОТОГРАФИИ











КОНТАКТЫ

Андрей Шестаков (Andrey Shestakov) – ведущий яхтенный брокер отдела продаж яхт и судов компании Shestakov Yacht Sales Inc. Официальный представитель Shestakov Yacht Sales Inc. для русскоговорящих клиентов в центральном офисе компании в Майами/Форт Лодердейл/Флорида/США.

Контактная информация

Email: **andrey@shestakovyachtsales.com**

Web: shestakovyachtsales.com

Телефоны

Краснодарский край: **+7(918)465-66-44**

США, Майами, Флорида: **+1(954)274-4435**

Время работы

Понедельник – Суббота: **9:00 - 21:00**
EDT

Воскресенье: **Закрито**

Адрес



Harbour Towne Marina, 850 NE 3rd St,
STE 213, Dania, FL 33004