

## 47FT 2000 CATALINA 470 — CATALINA



**Builder:** CATALINA

**Year Built:** 2000

**Model:** Cruising Sailboat

**Price:** PRICE ON APPLICATION

**Location:** United States

**LOA:** 47' 0" (14.33m)

**Beam:** 14' 0" (4.27m)

**Max Draft:** 7' 2" (2.18m)

Our experienced yacht broker, Andrey Shestakov, will help you choose and buy a yacht that best suits your needs 47ft 2000 Catalina 470 — CATALINA from our catalogue. Presently, at Shestakov Yacht Sales Inc., we have a wide variety of yachts available on our sale's list. We also work in close contact with all the big yacht manufacturers from all over the world.

If you would like to buy a yacht 47ft 2000 Catalina 470 — CATALINA or would like help answering any questions concerning purchasing, selling or chartering a yacht, please call +1(954)274-4435

# TABLE OF CONTENTS

TABLE OF CONTENTS	2
SPECIFICATIONS	5
Overview	5
Basic Information	5
Dimensions	6
Speed, Capacities and Weight	6
Accommodations	6
Hull and Deck Information	6
Engine Information	6
DETAILED INFORMATION	7
HULL and DECK	7
DIMENSIONS	8
VESSEL WALK THROUGH	8
ACCOMODATIONS	9
SALON and GALLEY	9
Electrical & Electronics	10
MECHANICAL	11
SAILS and RIGGING	12
ADDITIONAL EQUIPMENT	12
Broker Comments	13
Manufacturer Provided Description	13
Exclusions	13
Disclaimer	13
PHOTOS	15
At Anchor	15
Manufacturer Provided Image	15
Salon	15
Nav Station	15

Salon- Dinette	15
Salon	15
Galley-Companionway	16
Galley	16
Dinette _ Converts to double berth	16
Forward Cabin	16
Forward Head	16
Forward Cabin-2	16
Aft Cabin	17
Aft Cabin-2	17
Aft Head	17
Aft Head	17
Engine	17
Filters	17
Out of water	18
deck	18
Out of water	18
Side Deck	18
Side view	18
Aft view	18
Cockpit	19
Helm-1	19
Helm-2	19
Cockpit	19
Manufacturer Provided Image	19
CONTACTS	20
Contact details	20
Telephones	20
Office hours	20

Address

20

---

# SPECIFICATIONS

---

## Overview

---

Rare opportunity to own a serious cruising yacht at well below market value

Yacht has been donated to H.A.N.D.Y. who is offering the vessel at a very attractive price.

Serious offshore cruiser (She has circumnavigated the globe), Fast racing vessel, comfortable live-aboard, exciting day sailor or weekender

2 double cabins – 2 heads w/showers

Large Master suite aft w/ centerline queen – Guest double forward – en-suite

Spacious Salon with full galley, Nav station, Dinette

Exceptional headroom throughout – nearly 7 ft.

Bright and airy with numerous opening ports and overhead hatches

Air conditioning

Huge cockpit with twin steering wheel design – large sugar scoop swim platform

“IN-BOOM” furling main, roller furling Yankee genoa, Asymmetrical Spinnakers

This is an exceptional sailing vessel, and has already completed a circumnavigation with her previous owner. She not only performs well, but is easily single handled. There are comfortable quarters for owner’s party and crew, and her high headroom adds to the sensation of a large volume yacht, and can accommodate most sailors.

She is being offered at an exceptional price – survey available to serious buyers.

Click open full specs, and Call the listing broker immediately to see this vessel DYSID:3157244

## Basic Information

---

**Category:** Cruising Sailboat

**Sub Category:** Cruising/Racing Sailboat

**Model Year:** 2000

**Year Built:** 2000

**Country:** United States

## Dimensions

---

**LOA:** 47' 0" (14.33m)**LWL:** 42' 0" (12.80m)**Beam:** 14' 0" (4.27m)**Max Draft:** 7' 2" (2.18m)

## Speed, Capacities and Weight

---

**Displacement:** 27750 Pounds**Water Capacity:** 190 Gallons**Holding Tank:** 66 Gallons**Fuel Capacity:** 88 Gallons

## Accommodations

---

**Total Cabins:** 2**Total Heads:** 2

## Hull and Deck Information

---

**Hull Material:** Fiberglass**Hull Configuration:** Monohull

## Engine Information

---

**Engines:** 1**Manufacturer:** Yanmar**Model:** 4JH3TE**Engine Type:** Inboard**Fuel Type:** Diesel

---

# DETAILED INFORMATION

---

## HULL and DECK

---

Exceptionally clean deck layout with all lines led to the cockpit. Numerous and very large deck hatches which provide excellent ventilation and natural light below. Vessel carries an extensive package which includes all winches, helm, cockpit table, cockpit Bimini with connector to dodger.

Cast bronze fittings below waterline

SS anchor platform

SS Bow rail

Double lifelines w/ SS stanchions

Windlass – 12v Maxwell model 1200 w/ rode capstan and chain gypsy

60 lb. CQR anchor w/ 5/16 chain and rode

SS deck hardware

Foredeck anchor and chain access hatch

Hatches: Port & Starbd Salon - cabin top Escape hatch

Port & Starbd aft trunk cabin ventilation hatches

Forward stateroom cabin top escape hatch

Port & Starbd SS cabin top hand rails

Welded Aluminum diesel fuel tank – (2) 84 gal total

Water tanks (5) total 190 gal (per builder specs)

Holding tanks – 32 gal forward, 34 gal aft (per builder specs)

### COCKPIT:

Port and Starbd Steering Wheels – Edison w/ cable steering

Port side SS motor lift davit

Bimini top w/ SS supports

Molded sugar scoop swim platform w/ boarding ladder

Port & Starbd aft rail corner seats

Hot & Cold cockpit shower

Centerline cockpit Nav Pod

Folding leaf table – SS handrails

Centerline emergency tiller hatch

---

## DIMENSIONS

---

**LOA..... 48ft 6in**

**LWL ..... 42 ft.**

**Beam..... 14 ft.**

**Draft..... 7 ft.**

**Displacement... 27,750 lbs.**

**Ballast..... 9,550 lbs.**

**Engine... Yanmar 75 HP 4JH3TE (5100 hrs.)**

**Fuel – 88 gal**

**Water – 190 gal**

**Holding - 66 gal**

---

## VESSEL WALK THROUGH

---

Starting forward is the guest head and shower. Coming aft one enters the spacious guest cabin which includes a large 4'8" X 7'7" berth with innerspring mattress. Reading lamps are provided over all berths and seating areas. Bookshelves are added above berth. Across from this berth is an array of cedar lined cabinets.

Coming aft one enters the expansive main salon enriched with plush beige Ultrasuede upholstery. The U-shaped dinette occupies the port side of the salon and with two adjustable reclining chairs to starboard. The dinette can be set up as an extra bed by lowering the table. Aft the two chairs is the fully equipped navigation station.

Across to port aft is the wrap-around gourmet galley with convenient access to the dinette as well as the cockpit. Across from the galley is access to the owner's head with enclosed shower.



Access to the head is through the owner's stateroom as well.

The entire companionway step unit swings forward to provide complete access to the engine compartment.

Going aft through a private access door one finds the great aft owners stateroom with its queen sized 5' X 6'7" centerline bed with innerspring mattress. An upholstered chair is to port. Again, cabinets, drawers and cedar lined hanging lockers abound. The entire boat has rich teak and holly sole.

Extra large cockpit with twin steering wheels is accessed up the main companionway steps.

---

## ACCOMODATIONS

---

2 private cabins - each with en-suite head and shower

**FORWARD:** This boat has the cruising sailors' preferred 2 cabin layout which includes a forward Pullman stateroom to port with an en-suite head compartment and a large separate stall shower forward. This bright, spacious, and well-ventilated cabin features a queen sized double berth, and a generous number of lockers running the length of the cabin to starboard.

**AFT:** Moving aft through the companionway on the starboard side are additional hanging lockers which opens into the masters' quarters aft which features a centerline double queen berth. Additional storage is provided with multiple drawers, numerous hanging lockers, and double night tables with bulkhead lamps. A large mirrored vanity and an en-suite aft head with toilet, molded sink and vanity, and shower complete this ultimate cruising yacht.

Aft holding tank - w/12v macerator pump

Forward head w/ manual flush – Raritan

Aft Head – 12v Raritan toilet

---

## SALON and GALLEY

---

**Galley:** She has a very functional and well-planned sea galley that's truly a gourmet's delight. It's conveniently located near the companionway to easily serve both topside and the dinette area. Also, it's well lighted and ventilated with a power vented exhaust hood over the stove, overhead and countertop lighting, and generous natural ventilation and light from numerous hatches and ports.

- Top or front-loading refrigerator
- Top loading freezer

- Dry locker
- Microwave
- Glassware and dish cabinets overhead
- Double stainless-steel sink w/ hot and cold pressurized water faucet
- Illuminated power vent hood
- Three burner Princess propane stove with oven
- and serving tray cover
- Corian countertops
- Seaward 20 gal. hot water heater – 110v & engine heat exchanger
- Avonte counter tops w/teak sea rail fiddles
- Overhead opening hatch for ventilation

SALON: the Salon is quite spacious due to her 14 ft beam and high ceilings. It is well lit and ventilated by side ports and overhead hatches.

U-Shaped dinette to Port – converts to double berth

Dual captains chairs to Starbd with table between

Full Na Station – w/forward facing seat

---

## Electrical & Electronics

---

Electrical:

Northern Lights Generator 8 kw 110v

Batteries: (2) forward Salon 12v Duracell Ultra Maint Free (Aug 2017)

(1) forward salon 12v Napa Group 31 Maint free

(1) forward Salon 12v Intimidator AGM

(2) Aft Salon 12v group 31 Maint free

Circuit breaker panels – 12 v and 110v

Dual dockside power receptacles 120 v

2x50 ft. electric shore power cords- 30 amp

Heart/Freedom 12v to 110v inverter- charger

Port & starbd lower spreader lights

12v interior lighting

110v interior outlets – Aft head GFI

Electronics: - All electronics not guaranteed, and may need repair or replacement -this has been factored into the asking price of the vessel.

Radar – Raytheon RL70 with closed array antenna

Compass – Port and Starbd Ritchie 4”

Depth – Raytheon master View ST80,

Raytheon ST60 Multi Helm

Simrad A150 Class Bias Transceiver

VHF – Raytheon Ray 210

Single Sideband - Icom IC M 710

Auto Pilot – Raytheon ST 6000 Smart Pilot

Barometer – Weems & Plath

Wind indicator – Auto Helm series ST60 wind speed and direction

TV- 20” color Haier flat screen

12v Sony DVD player

Speakers – (4) in Salon, (2) cockpit, (2) forward stateroom, (2) aft stateroom

EPIRB – 406 ACR

## MECHANICAL

---

Yanmar 75 HP diesel engine model 4JH2-THE (5100 hrs.)

Morse single lever throttle control

Northern Lights Generator 8 kw 110v (1090 hours)

w/Racor 500 fuel filter

Dripless packing gland

3 blade SS AUTO STREAM feathering propeller (spare 3 blade fixed propeller)

Racor 500 FG fuel filter

Windlass – 12v Maxwell model 1200 w/ rode capstan and chain gypsy

Wind generator on SS pole (not guaranteed)

Air conditioning – Marine air 110v 12,000 BTU

12v fresh water pump

---

## **SAILS and RIGGING**

---

IJPE : 1010.25 sq ft I : 58.25 ft J : 17.00 ft P : 51.50 ft E : 20.00 ft Working Sail Area : 1010.00 sq ft

### **SAILS & RIGGING**

Aluminum mast with double spreaders

Main – boom roller furling system

Jib – Yankee cut jib on roller furling system

(2) A-symmetric spinnakers

Winches - (2) Harken #66 2 speed – Primaries

(2) Harken #48 2 speed

(2) Harken # 44 2 speed halyard winches in cabin top – (1) is 12v electric

Port & Starbd sail tracks

Main sheet traveler on cabin top

---

## **ADDITIONAL EQUIPMENT**

---

Hard bottom RIB (not registered)

Swiftlik 6 man life raft in canister ( not currently certified)

Magna Bar B Que Grill

Out board motor (not guaranteed)

---

## Broker Comments

---

This is a good example of the Catalina-47 set up for world cruising. She was designed, built, and fitted out exclusively for extended offshore cruising. Her equipment and systems were designed and engineered to meet the demands of Bluewater sailing, and she has already circumnavigated the globe

Her unique structural fiberglass grid is bonded to the hull providing exceptional hull strength and a massive foundation for securing bulkheads, equipment, engine and tankage. Her generous deck beam is carried well aft providing an expansive cockpit area with twin steering stations and provides below for a spacious and well-appointed master stateroom.

She is now the most affordable yacht in her class on the market.

---

## Manufacturer Provided Description

---

The challenges of extended offshore cruising have been met with a display of strength, innovative design, and engineering that clearly define the Catalina 470. A unique, structural fiberglass grid is bonded to the hull and provides both strength for the hull and a massive foundation for securing bulkheads, equipment, engine, and tanks. Below there is a new standard of functionality and comfort. The galley is remarkable in its amount of cold, consumables, and equipment space. The generous deck beam is carried well aft providing for an expansive cockpit with twin steering stations and large master stateroom below. The luxurious main salon boasts adjustable arm chairs and deep banquet seating available in soft, durable Ultraleather. The nav station contains all necessary readouts, as well as a swivel TV and VCR. For easy maintenance, centrally located equipment clusters offer easy access to all pumps, valves, and filters. A washer - dryer combination is sensibly located in the shower area of the forward head. At every turn, equipment and systems have been engineered to the most demanding bluewater specifications: the first ever articulated traveler rotates fore and aft, spreading the load evenly over bearing surfaces for smoother main sheet handling and more precise trimming. Custom cheek blocks and raised genoa tracks guide sheets straight aft to large, powerful winches. Moreover, a powerful, double spreader rig and generous sail plan are balanced to deliver a remarkable combination of high performance and ease of handling.

---

## Exclusions

---

Owner's personal belongings.

---

## Disclaimer

---

The Company offers the details of this vessel or yacht in good faith but cannot guarantee or warrant the accuracy of this information nor warrant the condition of the vessel. A buyer should

instruct his representatives, agents, or his surveyors, to investigate such details as the buyer desires validated. This vessel or yacht is offered subject to prior sale, price change, or withdrawal without notice.

# PHOTOS

**At Anchor**



**Manufacturer Provided Image**



**Salon**



**Nav Station**



**Salon- Dinette**



**Salon**





**Galley-Companionway**



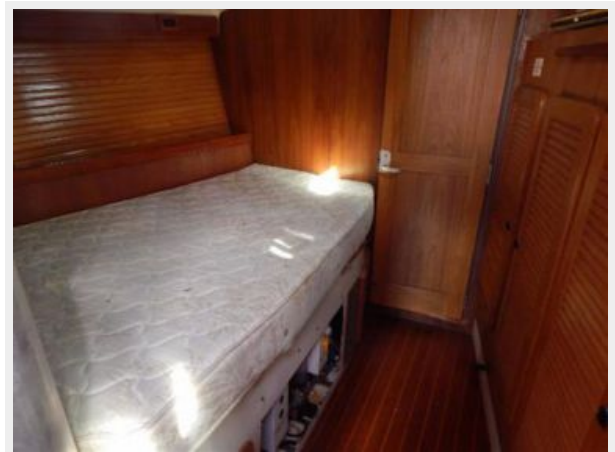
**Galley**



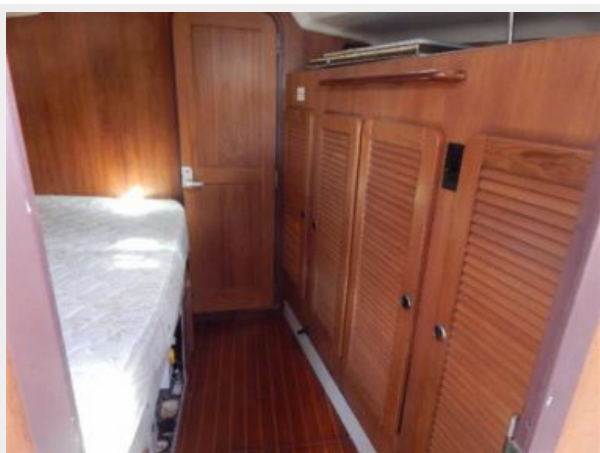
**Dinette \_ Converts to double berth**



**Forward Cabin**



**Forward Cabin-2**



**Forward Head**





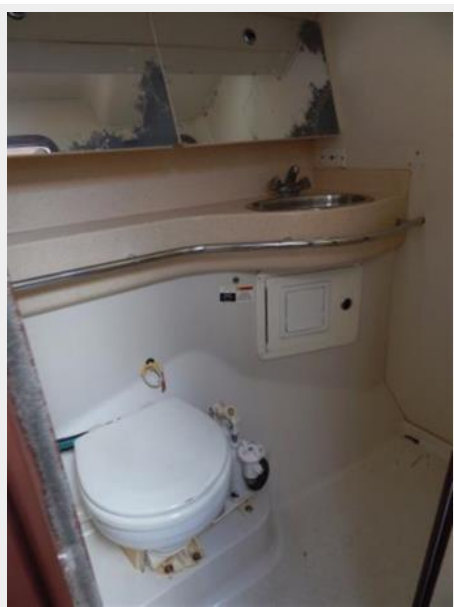
**Aft Cabin**



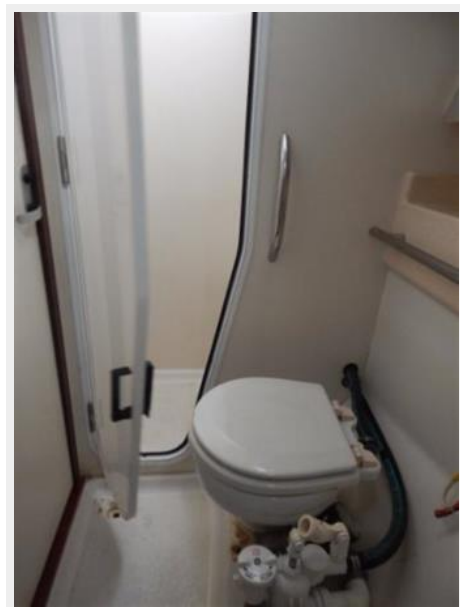
**Aft Cabin-2**



**Aft Head**



**Aft Head**



**Engine**



**Filters**



**Out of water**



**deck**



**Out of water**



**Side Deck**



**Side view**



**Aft view**





**Cockpit**



**Helm-1**



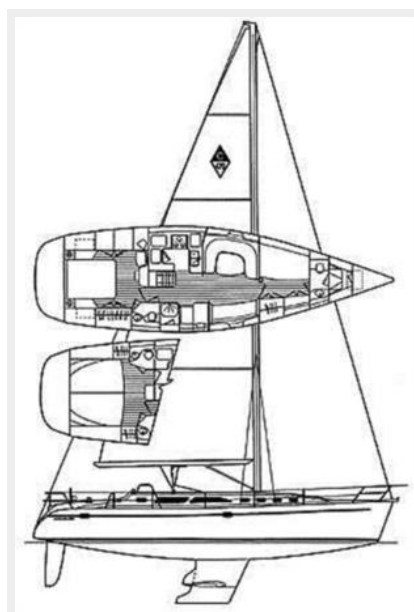
**Helm-2**



**Cockpit**



**Manufacturer Provided Image**



# CONTACTS

---

Andrey Shestakov, leading yacht broker of the sales department of Shestakov Yacht Sales Inc. Shestakov Yacht Sales Inc., the official representative of the Miami/Fort Lauderdale FL headquarters.

## Contact details

---

Email: **andrey@shestakovyachtsales.com**

Web: [shestakovyachtsales.com/en/](http://shestakovyachtsales.com/en/)

## Telephones

---

USA: **+1(954)274-4435**

## Office hours

---

Monday – Saturday: **9:00 - 21:00 EDT**

Sunday: **closed**

## Address

---



Harbour Towne Marina, 850 NE 3rd St,  
STE 213, Dania, FL 33004