

## 47FT 2000 CATALINA 470 — CATALINA



**Судостроитель:** CATALINA

**Год постройки:** 2000

**Модель:** Крейсерская яхта

**Цена:** ЦЕНА ЯХТЫ ПО ЗАПРОСУ

**Местонахождение:** United States

**Длина общая:** 47' 0" (14.33m)

**Ширина:** 14' 0" (4.27m)

**Макс. осадка:** 7' 2" (2.18m)

Купить 47ft 2000 Catalina 470 — CATALINA а также выбрать подходящую вам яхту из нашего каталога яхт вам поможет опытный яхтенный брокер Андрей Шестаков. На сегодняшний день компания Shestakov Yacht Sales Inc. имеет большое количество яхт в собственном списке продаж, а также тесно сотрудничает со всеми крупными яхтенными производителями по всему миру.

Для того чтобы купить яхту 47ft 2000 Catalina 470 — CATALINA а также проконсультироваться по любому вопросу связанному с покупкой, продажей, чартером яхт позвоните по телефону **+7(918)465-66-44**.

# ОГЛАВЛЕНИЕ

ОГЛАВЛЕНИЕ	2
ХАРАКТЕРИСТИКИ	5
Обзор	5
Основная информация	5
Размеры	6
Скорость, вместимость и масса	6
Размещение	6
Корпус и палуба	6
Информация о двигателе	6
ПОДРОБНОЕ ОПИСАНИЕ	7
HULL and DECK	7
DIMENSIONS	8
VESSEL WALK THROUGH	8
ACCOMODATIONS	9
SALON and GALLEY	9
Electrical & Electronics	10
MECHANICAL	11
SAILS and RIGGING	12
ADDITIONAL EQUIPMENT	12
Broker Comments	13
Manufacturer Provided Description	13
Исключения	13
Отказ от ответственности	13
ФОТОГРАФИИ	15
At Anchor	15
Manufacturer Provided Image	15
Salon	15
Nav Station	15

Salon- Dinette	15
Salon	15
Galley-Companionway	16
Galley	16
Dinette _ Converts to double berth	16
Forward Cabin	16
Forward Head	16
Forward Cabin-2	16
Aft Cabin	17
Aft Cabin-2	17
Aft Head	17
Aft Head	17
Engine	17
Filters	17
Out of water	18
deck	18
Out of water	18
Side Deck	18
Side view	18
Aft view	18
Cockpit	19
Helm-1	19
Helm-2	19
Cockpit	19
Manufacturer Provided Image	19
<b>КОНТАКТЫ</b>	<b>20</b>
Контактная информация	20
Телефоны	20
Время работы	20

---

Адрес

20

# ХАРАКТЕРИСТИКИ

---

## Обзор

---

Rare opportunity to own a serious cruising yacht at well below market value

Yacht has been donated to H.A.N.D.Y. who is offering the vessel at a very attractive price.

Serious offshore cruiser (She has circumnavigated the globe), Fast racing vessel, comfortable live-aboard, exciting day sailor or weekender

2 double cabins – 2 heads w/showers

Large Master suite aft w/ centerline queen – Guest double forward – en-suite

Spacious Salon with full galley, Nav station, Dinette

Exceptional headroom throughout – nearly 7 ft.

Bright and airy with numerous opening ports and overhead hatches

Air conditioning

Huge cockpit with twin steering wheel design – large sugar scoop swim platform

“IN-BOOM” furling main, roller furling Yankee genoa, Asymmetrical Spinnakers

This is an exceptional sailing vessel, and has already completed a circumnavigation with her previous owner. She not only performs well, but is easily single handled. There are comfortable quarters for owner’s party and crew, and her high headroom adds to the sensation of a large volume yacht, and can accommodate most sailors.

She is being offered at an exceptional price – survey available to serious buyers.

Click open full specs, and Call the listing broker immediately to see this vessel DYSID:3157244

## Основная информация

---

**Тип судна:** Крейсерская яхта

**Подкатегория:** Cruising/Racing Sailboat

**Модельный год:** 2000

**Год постройки:** 2000

**Страна:** United States

## Размеры

---

**Длина общая:** 47' 0" (14.33m)

**Длина по ватерлинии:** 42' 0" (12.80m)

**Ширина:** 14' 0" (4.27m)

**Макс. осадка:** 7' 2" (2.18m)

## Скорость, вместимость и масса

---

**Водоизмещение:** 27750 Pounds

**Вместимость воды:** 190 Gallons

**Вместимость сточного бака:** 66 Gallons

**Объем топливного бака:** 88 Gallons

## Размещение

---

**Всего кают:** 2

**Всего ком. состава:** 2

## Корпус и палуба

---

**Материал корпуса:** Fiberglass

**Комплектация корпуса:** Monohull

## Информация о двигателе

---

**Двигатели:** 1

**Производитель:** Yanmar

**Модель:** 4JH3TE

**Тип двигателя:** Inboard

**Тип топлива:** Diesel

---

# ПОДРОБНОЕ ОПИСАНИЕ

---

## HULL and DECK

---

Exceptionally clean deck layout with all lines led to the cockpit. Numerous and very large deck hatches which provide excellent ventilation and natural light below. Vessel carries an extensive package which includes all winches, helm, cockpit table, cockpit Bimini with connector to dodger.

Cast bronze fittings below waterline

SS anchor platform

SS Bow rail

Double lifelines w/ SS stanchions

Windlass – 12v Maxwell model 1200 w/ rode capstan and chain gypsy

60 lb. CQR anchor w/ 5/16 chain and rode

SS deck hardware

Foredeck anchor and chain access hatch

Hatches: Port & Starbd Salon - cabin top Escape hatch

Port & Strbd aft trunk cabin ventilation hatches

Forward stateroom cabin top escape hatch

Port & Starbd SS cabin top hand rails

Welded Aluminum diesel fuel tank – (2) 84 gal total

Water tanks (5) total 190 gal (per builder specs)

Holding tanks – 32 gal forward, 34 gal aft (per builder specs)

### COCKPIT:

Port and Starbd Steering Wheels – Edison w/ cable steering

Port side SS motor lift davit

Bimini top w/ SS supports

Molded sugar scoop swim platform w/ boarding ladder

Port & Starbd aft rail corner seats  
Hot & Cold cockpit shower  
Centerline cockpit Nav Pod  
Folding leaf table – SS handrails  
Centerline emergency tiller hatch

## DIMENSIONS

---

**LOA..... 48ft 6in**

**LWL ..... 42 ft.**

**Beam..... 14 ft.**

**Draft..... 7 ft.**

**Displacement... 27,750 lbs.**

**Ballast..... 9,550 lbs.**

**Engine... Yanmar 75 HP 4JH3TE (5100 hrs.)**

**Fuel – 88 gal**

**Water – 190 gal**

**Holding - 66 gal**

## VESSEL WALK THROUGH

---

Starting forward is the guest head and shower. Coming aft one enters the spacious guest cabin which includes a large 4'8" X 7'7" berth with innerspring mattress. Reading lamps are provided over all berths and seating areas. Bookshelves are added above berth. Across from this berth is an array of cedar lined cabinets.

Coming aft one enters the expansive main salon enriched with plush beige Ultrasuede upholstery. The U-shaped dinette occupies the port side of the salon and with two adjustable reclining chairs to starboard. The dinette can be set up as an extra bed by lowering the table. Aft the two chairs is the fully equipped navigation station.

Across to port aft is the wrap-around gourmet galley with convenient access to the dinette as well as the cockpit. Across from the galley is access to the owner's head with enclosed shower.



Access to the head is through the owner's stateroom as well.

The entire companionway step unit swings forward to provide complete access to the engine compartment.

Going aft through a private access door one finds the great aft owners stateroom with its queen sized 5' X 6'7" centerline bed with innerspring mattress. An upholstered chair is to port. Again, cabinets, drawers and cedar lined hanging lockers abound. The entire boat has rich teak and holly sole.

Extra large cockpit with twin steering wheels is accessed up the main companionway steps.

---

## ACCOMODATIONS

---

2 private cabins - each with en-suite head and shower

**FORWARD:** This boat has the cruising sailors' preferred 2 cabin layout which includes a forward Pullman stateroom to port with an en-suite head compartment and a large separate stall shower forward. This bright, spacious, and well-ventilated cabin features a queen sized double berth, and a generous number of lockers running the length of the cabin to starboard.

**AFT:** Moving aft through the companionway on the starboard side are additional hanging lockers which opens into the masters' quarters aft which features a centerline double queen berth. Additional storage is provided with multiple drawers, numerous hanging lockers, and double night tables with bulkhead lamps. A large mirrored vanity and an en-suite aft head with toilet, molded sink and vanity, and shower complete this ultimate cruising yacht.

Aft holding tank - w/12v macerator pump

Forward head w/ manual flush – Raritan

Aft Head – 12v Raritan toilet

---

## SALON and GALLEY

---

**Galley:** She has a very functional and well-planned sea galley that's truly a gourmet's delight. It's conveniently located near the companionway to easily serve both topside and the dinette area. Also, it's well lighted and ventilated with a power vented exhaust hood over the stove, overhead and countertop lighting, and generous natural ventilation and light from numerous hatches and ports.

- Top or front-loading refrigerator
- Top loading freezer

- Dry locker
- Microwave
- Glassware and dish cabinets overhead
- Double stainless-steel sink w/ hot and cold pressurized water faucet
- Illuminated power vent hood
- Three burner Princess propane stove with oven
- and serving tray cover
- Corian countertops
- Seaward 20 gal. hot water heater – 110v & engine heat exchanger
- Avonte counter tops w/teak sea rail fiddles
- Overhead opening hatch for ventilation

SALON: the Salon is quite spacious due to her 14 ft beam and high ceilings. It is well lit and ventilated by side ports and overhead hatches.

U-Shaped dinette to Port – converts to double berth

Dual captains chairs to Starbd with table between

Full Na Station – w/forward facing seat

---

## Electrical & Electronics

---

Electrical:

Northern Lights Generator 8 kw 110v

Batteries: (2) forward Salon 12v Duracell Ultra Maint Free (Aug 2017)

(1) forward salon 12v Napa Group 31 Maint free

(1) forward Salon 12v Intimidator AGM

(2) Aft Salon 12v group 31 Maint free

Circuit breaker panels – 12 v and 110v

Dual dockside power receptacles 120 v

2x50 ft. electric shore power cords- 30 amp

Heart/Freedom 12v to 110v inverter- charger

Port & starbd lower spreader lights

12v interior lighting

---

110v interior outlets – Aft head GFI

Electronics: - All electronics not guaranteed, and may need repair or replacement -this has been factored into the asking price of the vessel.

Radar – Raytheon RL70 with closed array antenna

Compass – Port and Starbd Ritchie 4”

Depth – Raytheon master View ST80,

Raytheon ST60 Multi Helm

Simrad A150 Class Bias Transceiver

VHF – Raytheon Ray 210

Single Sideband - Icom IC M 710

Auto Pilot – Raytheon ST 6000 Smart Pilot

Barometer – Weems & Plath

Wind indicator – Auto Helm series ST60 wind speed and direction

TV- 20” color Haier flat screen

12v Sony DVD player

Speakers – (4) in Salon, (2) cockpit, (2) forward stateroom, (2) aft stateroom

EPIRB – 406 ACR

## **MECHANICAL**

---

Yanmar 75 HP diesel engine model 4JH2-THE (5100 hrs.)

Morse single lever throttle control

Northern Lights Generator 8 kw 110v (1090 hours)

w/Racor 500 fuel filter

Dripless packing gland

3 blade SS AUTO STREAM feathering propeller (spare 3 blade fixed propeller)

Racor 500 FG fuel filter

Windlass – 12v Maxwell model 1200 w/ rode capstan and chain gypsy

Wind generator on SS pole (not guaranteed)

Air conditioning – Marine air 110v 12,000 BTU

12v fresh water pump

---

## **SAILS and RIGGING**

---

IJPE : 1010.25 sq ft I : 58.25 ft J : 17.00 ft P : 51.50 ft E : 20.00 ft Working Sail Area : 1010.00 sq ft

### **SAILS & RIGGING**

Aluminum mast with double spreaders

Main – boom roller furling system

Jib – Yankee cut jib on roller furling system

(2) A-symmetric spinnakers

Winches - (2) Harken #66 2 speed – Primaries

(2) Harken #48 2 speed

(2) Harken # 44 2 speed halyard winches in cabin top – (1) is 12v electric

Port & Starbd sail tracks

Main sheet traveler on cabin top

---

## **ADDITIONAL EQUIPMENT**

---

Hard bottom RIB (not registered)

Swiftlik 6 man life raft in canister ( not currently certified)

Magna Bar B Que Grill

Out board motor (not guaranteed)

---

## Broker Comments

---

This is a good example of the Catalina-47 set up for world cruising. She was designed, built, and fitted out exclusively for extended offshore cruising. Her equipment and systems were designed and engineered to meet the demands of Bluewater sailing, and she has already circumnavigated the globe

Her unique structural fiberglass grid is bonded to the hull providing exceptional hull strength and a massive foundation for securing bulkheads, equipment, engine and tankage. Her generous deck beam is carried well aft providing an expansive cockpit area with twin steering stations and provides below for a spacious and well-appointed master stateroom.

She is now the most affordable yacht in her class on the market.

---

## Manufacturer Provided Description

---

The challenges of extended offshore cruising have been met with a display of strength, innovative design, and engineering that clearly define the Catalina 470. A unique, structural fiberglass grid is bonded to the hull and provides both strength for the hull and a massive foundation for securing bulkheads, equipment, engine, and tanks. Below there is a new standard of functionality and comfort. The galley is remarkable in its amount of cold, consumables, and equipment space. The generous deck beam is carried well aft providing for an expansive cockpit with twin steering stations and large master stateroom below. The luxurious main salon boasts adjustable arm chairs and deep banquet seating available in soft, durable Ultraleather. The nav station contains all necessary readouts, as well as a swivel TV and VCR. For easy maintenance, centrally located equipment clusters offer easy access to all pumps, valves, and filters. A washer - dryer combination is sensibly located in the shower area of the forward head. At every turn, equipment and systems have been engineered to the most demanding bluewater specifications: the first ever articulated traveler rotates fore and aft, spreading the load evenly over bearing surfaces for smoother main sheet handling and more precise trimming. Custom cheek blocks and raised genoa tracks guide sheets straight aft to large, powerful winches. Moreover, a powerful, double spreader rig and generous sail plan are balanced to deliver a remarkable combination of high performance and ease of handling.

---

## Исключения

---

При продаже яхты исключаются личные вещи владельца.

---

## Отказ от ответственности

---

Компания предоставляет описание судна или яхты добросовестно, но не может гарантировать точность этой информации, а также не ручается за техническое

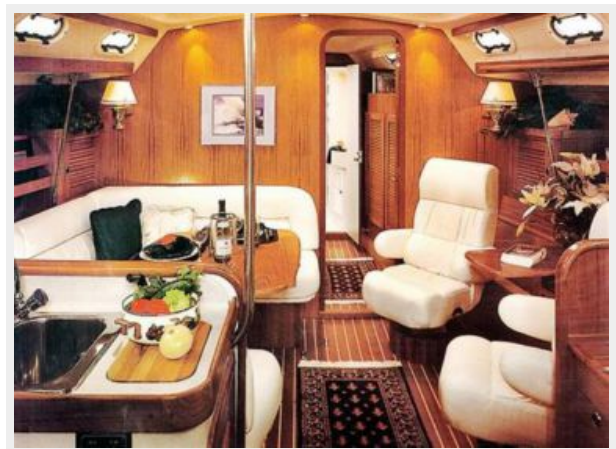
состояние. Покупатель должен проинструктировать своих агентов или оценщиков исследовать представленную информацию более подробно, по собственному желанию. Продажа судна или яхты, изменение цены или снятие с продажи будет происходить без предварительного уведомления.

# ФОТОГРАФИИ

**At Anchor**



**Manufacturer Provided Image**



**Salon**



**Nav Station**



**Salon- Dinette**



**Salon**



**Galley-Companionway**



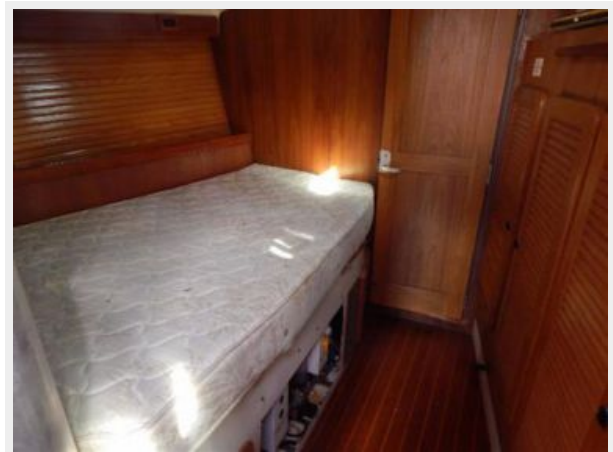
**Galley**



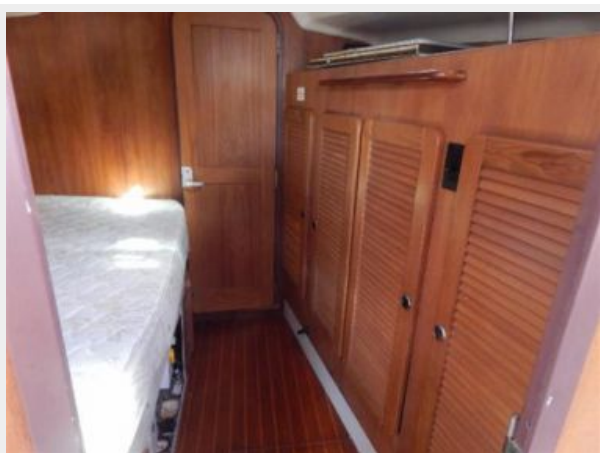
**Dinette \_ Converts to double berth**



**Forward Cabin**



**Forward Cabin-2**



**Forward Head**

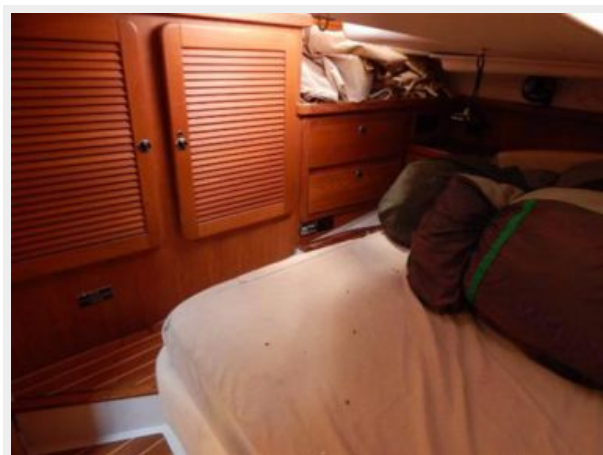




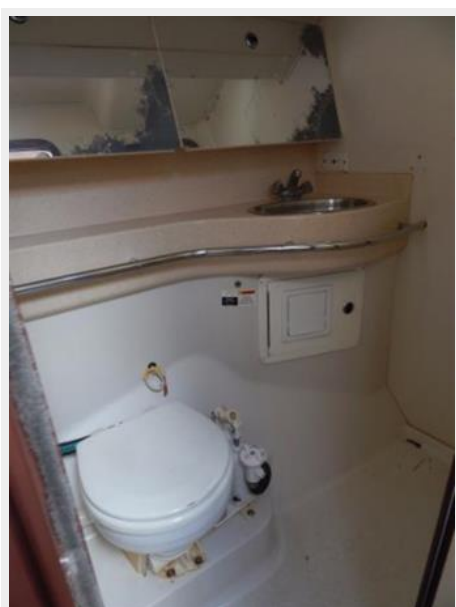
**Aft Cabin**



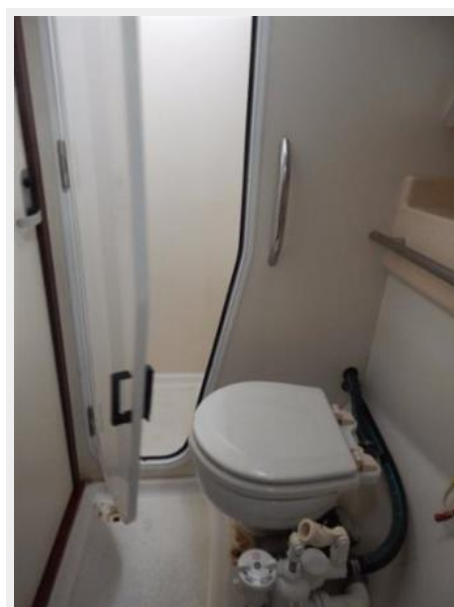
**Aft Cabin-2**



**Aft Head**



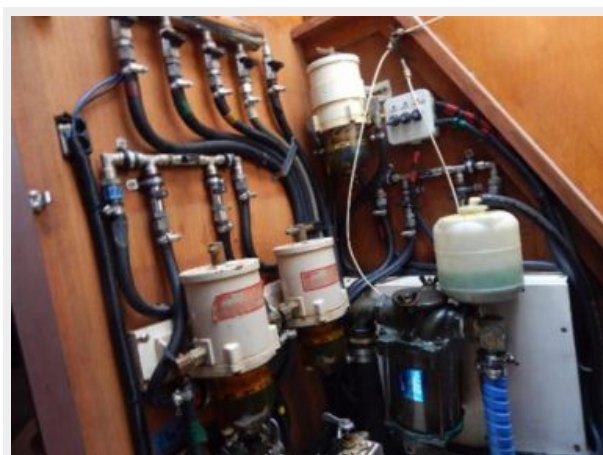
**Aft Head**



**Engine**



**Filters**



**Out of water**



**deck**



**Out of water**



**Side Deck**



**Side view**



**Aft view**



**Скокпит**



**Helm-1**



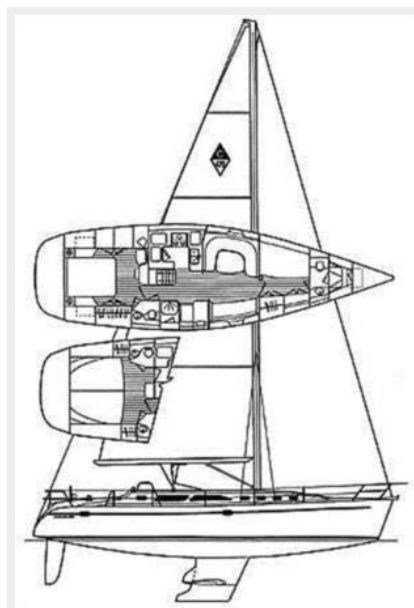
**Helm-2**



**Скокпит**



**Manufacturer Provided Image**



# КОНТАКТЫ

---

Андрей Шестаков (Andrey Shestakov) – ведущий яхтенный брокер отдела продаж яхт и судов компании Shestakov Yacht Sales Inc. Официальный представитель Shestakov Yacht Sales Inc. для русскоговорящих клиентов в центральном офисе компании в Майами/Форт Лодердейл/Флорида/США.

## Контактная информация

---

Email: [andrey@shestakovyachtsales.com](mailto:andrey@shestakovyachtsales.com)

Web: [shestakovyachtsales.com](http://shestakovyachtsales.com)

## Телефоны

---

Краснодарский край: **+7(918)465-66-44**

США, Майами, Флорида: **+1(954)274-4435**

## Время работы

---

Понедельник – Суббота: **9:00 - 21:00**  
EDT

Воскресенье: **Закрето**

## Адрес

---



Harbour Towne Marina, 850 NE 3rd St,  
STE 213, Dania, FL 33004