

## ASHANTI — CANADIAN SAILCRAFT



**Builder:** CANADIAN SAILCRAFT

**Year Built:** 1983

**Model:** Cruising Sailboat

**Price:** PRICE ON APPLICATION

**Location:** United States

**LOA:** 36' 0" (10.97m)

**Beam:** 11' 6" (3.51m)

**Max Draft:** 6' 3" (1.91m)

Our experienced yacht broker, Andrey Shestakov, will help you choose and buy a yacht that best suits your needs **Ashanti — CANADIAN SAILCRAFT** from our catalogue. Presently, at Shestakov Yacht Sales Inc., we have a wide variety of yachts available on our sale's list. We also work in close contact with all the big yacht manufacturers from all over the world.

If you would like to buy a yacht **Ashanti — CANADIAN SAILCRAFT** or would like help answering any questions concerning purchasing, selling or chartering a yacht, please call **+1(954)274-4435**

---

# TABLE OF CONTENTS

---

TABLE OF CONTENTS	2
SPECIFICATIONS	3
Overview	3
Basic Information	3
Dimensions	3
Speed, Capacities and Weight	3
Accommodations	3
Hull and Deck Information	4
Engine Information	4
DETAILED INFORMATION	5
CS 36 Ashanti Walkthrough	5
CS 36 Ashanti Deck	5
CS 36 Ashanti Galley	5
CS 36 Ashanti Accommodations	6
CS 36 Ashanti Head	6
Exclusions	6
Disclaimer	6
PHOTOS	7
CONTACTS	15
Contact details	15
Telephones	15
Office hours	15
Address	15

---

# SPECIFICATIONS

---

## Overview

---

Ashanti is a 1983 Canadian Sailcraft built by CS Yachts Limited in Ontario, Canada. These are very strong and seaworthy vessels that are a joy to sail and are comfortable down below. Ashanti has been sailed and lived on extensively by her current owners and remains a highlight in their lives. Ashanti is open, light filled and has accommodation for 5. All lines lead into the cockpit and the jib is roller furling for single hand sailing. If you are looking for a great weekend getaway sailboat then you should come and see what Ashanti has to offer.

## Basic Information

---

**Category:** Cruising Sailboat

**Model Year:** 1983

**Year Built:** 1983

**Country:** United States

## Dimensions

---

**LOA:** 36' 0" (10.97m)

**LWL:** 29' 3" (8.92m)

**Beam:** 11' 6" (3.51m)

**Max Draft:** 6' 3" (1.91m)

**Clearance:** 54' 0" (16.46m)

## Speed, Capacities and Weight

---

**Displacement:** 15500 Pounds

**Water Capacity:** 83 Gallons

**Fuel Capacity:** 35 Gallons

## Accommodations

---

**Total Cabins:** 1

**Total Heads:** 1

---

## Hull and Deck Information

---

**Hull Material:** Fiberglass

**Hull Configuration:** Monohull

---

## Engine Information

---

**Engines:** 1

**Manufacturer:** Volvo

**Model:** Volvo

**Engine Type:** Inboard

**Fuel Type:** Diesel

---

# DETAILED INFORMATION

---

---

## CS 36 Ashanti Walkthrough

---

Ashanti has wide side decks that provide ample access to the fore decks and cockpit. The bow pulpit has stainless railing and there is good access to the roller furling and anchor locker. The cockpit has a good helm setup and plenty of seating for crew and guests. The companion way is wide and accessible. Down below the u shaped galley is to port and the quarter berth and navigation station is to starboard. Going forward there is a centerline, drop leaf table and couch type seating port and starboard. A forward bulkhead with privacy door separates the head to starboard, and the master v berth forward.

---

## CS 36 Ashanti Deck

---

Ashanti has a masthead sloop rig with a total sail area of 640 square feet (59 square meters) and a mast height of 53 feet. The jib is roller furling, and all lines lead into the cockpit for single hand operation. The rudder is an internally mounted spade type, transom hung rudder and has wheel steering. Other features include:

- Stainless steel stanchions and lifelines
- Stainless steel bow pulpit
- Loran's anchor windlass with foot controls
- 2 anchors
- 7 deck winches total with 4 two speed winches
- Stern mounted solar panels
- Stainless steel grabrails for going forward
- Solar panels
- 3rd anchor on the stern
- Drop down swim ladder
- Single spreader mast with spinnaker pole
- Two blade propeller
- Bimini and dodger

---

## CS 36 Ashanti Galley

---

The galley of Ashanti is u shaped and has the following features:

- 3 burner, gimbed, gas stove and oven
- Formica counters
- Stainless steel sink and faucet
- Refrigerator
- Wood cabinetry

- Insulated cool boxes

---

## CS 36 Ashanti Accommodations

---

The accommodations of Ashanti are comfortable and well placed. There is a dining table centered in the salon with u shaped seating starboard and convertible built in seating to port. The port side seating area converts to a pilot berth through a unique, removeable end cushion that extends the seating to pilot berth length. There is a quarter berth aft of the built in navigation station. The walls are lined with handsome wood cabinetry and paneling and the sole is teak and holly. There are six rectangular ports for lighting and opening hatches in the salon and forward berth. The forward berth is separated from the salon by a bulkhead and door. The hull sides of the forward berth are lined with wood slats and there are standing lockers and storage drawers built in.

---

## CS 36 Ashanti Head

---

The separate head on Ashanti consists of a vanity with fiberglass molded sink, stainless faucet, mirror, hand pump toilet, shower nozzle, wood grate flooring, and cabinetry.

---

## Exclusions

---

Owner's personal belongings.

---

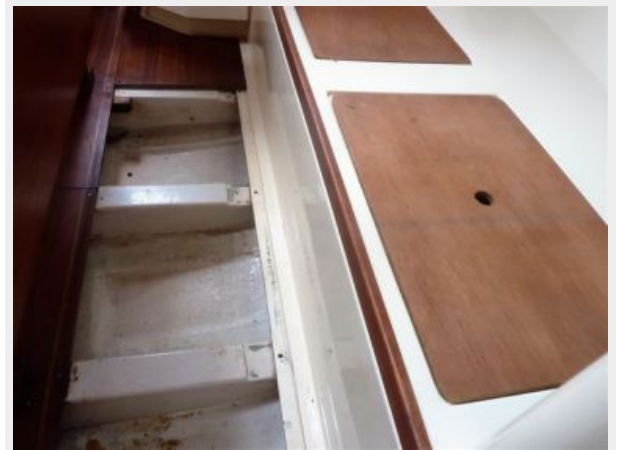
## Disclaimer

---

The Company offers the details of this vessel or yacht in good faith but cannot guarantee or warrant the accuracy of this information nor warrant the condition of the vessel. A buyer should instruct his representatives, agents, or his surveyors, to investigate such details as the buyer desires validated. This vessel or yacht is offered subject to prior sale, price change, or withdrawal without notice.

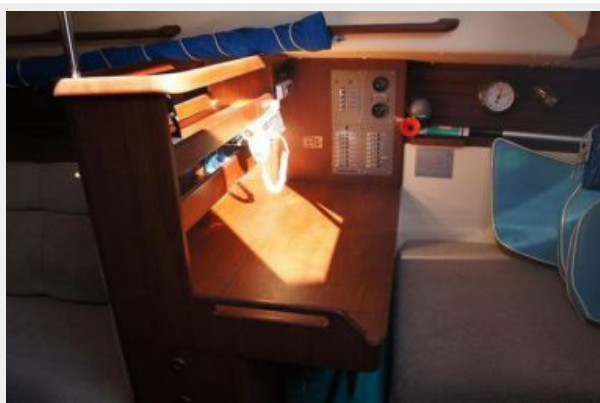
# PHOTOS



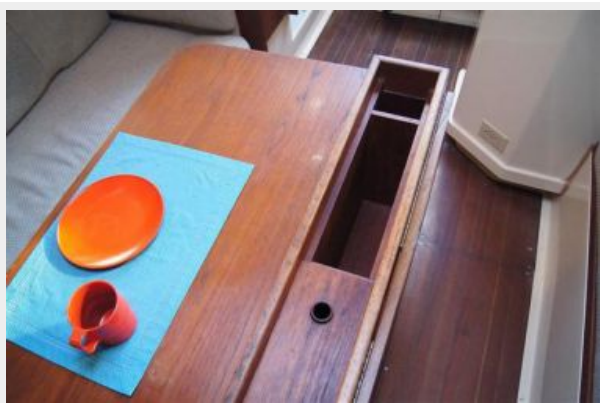


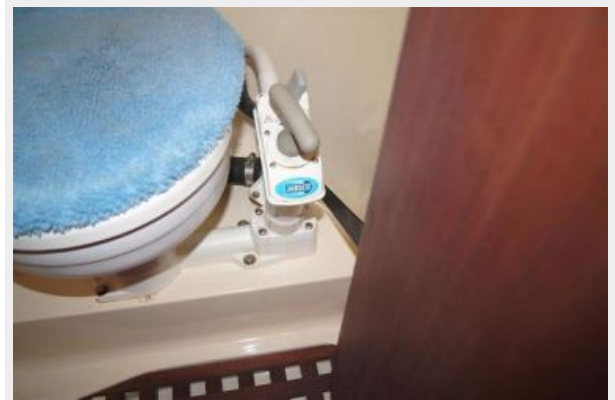
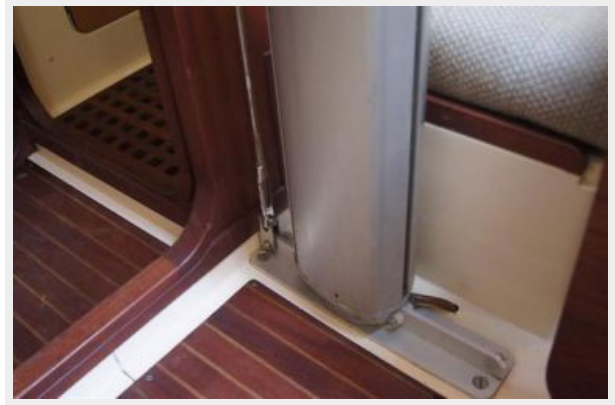














# CONTACTS

---

Andrey Shestakov, leading yacht broker of the sales department of Shestakov Yacht Sales Inc. Shestakov Yacht Sales Inc., the official representative of the Miami/Fort Lauderdale FL headquarters.

## Contact details

---

Email: [andrey@shestakovyachtsales.com](mailto:andrey@shestakovyachtsales.com)

Web: [shestakovyachtsales.com/en/](http://shestakovyachtsales.com/en/)

## Telephones

---

USA: +1(954)274-4435

## Office hours

---

Monday – Saturday: **9:00 - 21:00** EDT

Sunday: **closed**

## Address

---



Harbour Towne Marina, 850 NE 3rd St,  
STE 213, Dania, FL 33004