

JUPITER — GIORGETTI & MAGRINI



Builder: [Giorgetti & Magrini](#)

Year Built: 1989

Model: Cruising Ketch

Price: PRICE ON APPLICATION

Location: United States

LOA: 103' 0" (31.39m)

Beam: 22' 0" (6.71m)

Max Draft: 11' 0" (3.35m)

Max Speed: 10 Kts. (12 MPH)

Our experienced yacht broker, Andrey Shestakov, will help you choose and buy a yacht that best suits your needs JUPITER — Giorgetti & Magrini from our catalogue. Presently, at Shestakov Yacht Sales Inc., we have a wide variety of yachts available on our sale's list. We also work in close contact with all the big yacht manufacturers from all over the world.

If you would like to buy a yacht JUPITER — Giorgetti & Magrini or would like help answering any questions concerning purchasing, selling or chartering a yacht, please call +1(954)274-4435

TABLE OF CONTENTS

TABLE OF CONTENTS	2
SPECIFICATIONS	4
Overview	4
Basic Information	4
Dimensions	4
Speed, Capacities and Weight	4
Accommodations	5
Hull and Deck Information	5
Engine Information	5
DETAILED INFORMATION	6
Accommodations/Walkthrough	6
Galley	6
Navigation and Electronics	6
Engine and Mechanical Equipment	7
Additional Equipment	7
Tender	7
Remarks	7
Exclusions	8
Exclusions	8
Disclaimer	8
PHOTOS	9
NAVIGATION STATION	9
SALON	9
MASTER STATEROOM	9
SALON	9
MASTER STATEROOM	9
MASTER HEAD	9
GUEST STATEROOM	10

GUEST STATEROOM	10
GUEST STATEROOM	10
GUEST HEAD	10
CREW QUARTERS	10
CREW QUARTERS	10
WINE RACK	11
DECK	11
AFT DECK	11
COCKPIT TABLE	11
COCKPIT TABLE	11
COCKPIT TABLE	11
AERIAL VIEW	12
EXTERIOR	12
EXTERIOR	12
EXTERIOR	12
EXTERIOR	12
CONTACTS	13
Contact details	13
Telephones	13
Office hours	13
Address	13

SPECIFICATIONS

Overview

JUPITER was conceived as one of the first sailing yachts to be capable of continuous circumnavigation with an eye to comfort while on board. Her first trans-Atlantic took place in 1990. She has since sailed all the world's oceans as well as the Seven Seas.

She is capable of taking her owners and guests to the most remote locations in full luxury. She has rounded both Cape Horn and Cape of Good Hope and is at home in tropical or arctic conditions.

With all this, she was designed and built to be a joy to sail and a luxurious home away from land. She has four gracious staterooms, easily accommodating ten guests and comfortable crew quarters forward for four.

Basic Information

Category: Cruising Ketch

Model Year: 1989

Year Built: 1989

Country: United States

Dimensions

LOA: 103' 0" (31.39m)

Beam: 22' 0" (6.71m)

Max Draft: 11' 0" (3.35m)

Speed, Capacities and Weight

Max Speed: 10 Kts. (12 MPH)

Displacement: 132000 Pounds

Water Capacity: 1000 Gallons

Fuel Capacity: 2180 Gallons

Accommodations

Total Cabins: 4

Total Heads: 5

Crew Cabin: 2

Crew Sleeps: 4

Crew Heads: 1

Hull and Deck Information

Hull Material: Aluminum

Engine Information

Engines: 1

Manufacturer: MTU

Model: OM 423

Fuel Type: Diesel

DETAILED INFORMATION

Accommodations/Walkthrough

There are four guest cabins. The after cabin is athwartships and functions as the master cabin with two double berths, port and starboard. The ensuite head is to port.

Forward to starboard is a very nice double berth cabin with ensuite head and shower. Next forward, port and starboard, are two matching guest cabins with twin berths and both have a Pullman berth above one of the twins. Each has a spacious ensuite head.

The salon is forward of the guest cabins and contains gracious lounging areas and an exquisite dining table. The galley is then forward to starboard. Crew quarters are accessed through the galley and to port and have ample space in two cabins for four crew, sharing a head. A bos'n locker for storage occupies the forepeak.

Galley

- 4-burner gas stove with gas oven and grill
- Dishwasher
- Microwave
- (3) refrigerators
- (2) freezers
- Washer and dryer

Navigation and Electronics

- Thrane & Thrane SatCom
- ICOM M801E-DSC Single Sideband Radio
- Shipmate RS 8400 DSC VHF Radio
- (2) Furuno Radar
- Seatrel Compass
- Simrad Robertson AP 22 Autopilot
- Brookes & Gatehouse Hydra 2000 Sailing Instruments: Wind, Depth and Speed
- (2) Furuno 1GPSS
- Furuno Weatherfax
- (2) Furuno Chartplotters
- Central TV, DVD, stereo
- Owner's cabin; TV, DVD, stereo
- VIP and two guest cabins have stereo systems
- On deck stereo

Engine and Mechanical Equipment

- Mercedes OM 423 - 10 cylinder, 355hp, 4-stroke Atmospheric, 323hp at 2250 rpm
- Masson SEE hydraulically operated Marine Gearbox NF3
- Hundestedt hydraulically variable pitch propeller; 4-blade
- (2) Kohler 27kW generators, single phase 230v AC
- (2) 220V shore power units
- Hydraulically operated bow thruster
- Condaria air conditioning throughout
- Air compressor
- Twin Idromar desalinators
- Lofrans hydraulic anchor windlass system
- (2) Lewmar 77 hydraulic winches
- (5) Lewmar 55 hydraulic winches
- (2) Lewmar 110 hydraulic winches
- (7) manual winches
- (3) Lewmar 52 manual winches

Additional Equipment

- (2) CQR anchors
- 420' anchor chains
- Pasarelle
- Fire extinguishers
- Life rings
- Safety gear
- Medical equipment
- EPIRBS
- Flares
- Laser sailboat
- Bauer compressor
- Dive tanks
- Water skis
- Docking lines and fenders

Tender

- Prestige 475 RIB tender with Yamaha 50hp
- Prestige 300 RIB tender with Yamaha 8hp

Remarks

There are four guest cabins. The after cabin is athwartships and functions as the master cabin with two double berths, port and starboard. The ensuite head is to port.

Forward to starboard is a very nice double berth cabin with ensuite head and shower. Next forward, port and starboard, are two matching guest cabins with twin berths and both have a Pullman berth above one of the twins. Each has a spacious ensuite head.

The salon is forward of the guest cabins and contains gracious lounging areas and an exquisite dining table. The galley is then forward to starboard. Crew quarters are accessed through the galley and to port and have ample space in two cabins for four crew, sharing a head. A bos'n locker for storage occupies the forepeak.

Exclusions

Potential purchasers should assume that items on the vessel at the time of viewing, but not specifically listed on this sheet, are not included with the sale of the yacht. These specifications are believed to be true and correct but cannot be guaranteed.

Exclusions

Owner's personal belongings.

Disclaimer

The Company offers the details of this vessel or yacht in good faith but cannot guarantee or warrant the accuracy of this information nor warrant the condition of the vessel. A buyer should instruct his representatives, agents, or his surveyors, to investigate such details as the buyer desires validated. This vessel or yacht is offered subject to prior sale, price change, or withdrawal without notice.

PHOTOS

NAVIGATION STATION



SALON



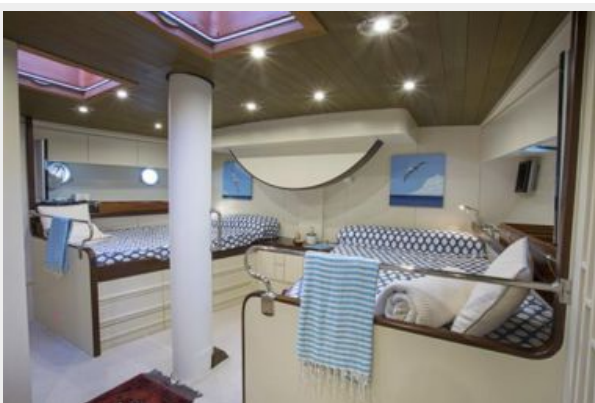
SALON



MASTER STATEROOM



MASTER STATEROOM



MASTER HEAD



GUEST STATEROOM



GUEST STATEROOM



GUEST STATEROOM



GUEST HEAD



CREW QUARTERS



CREW QUARTERS



WINE RACK



DECK



AFT DECK



COCKPIT TABLE



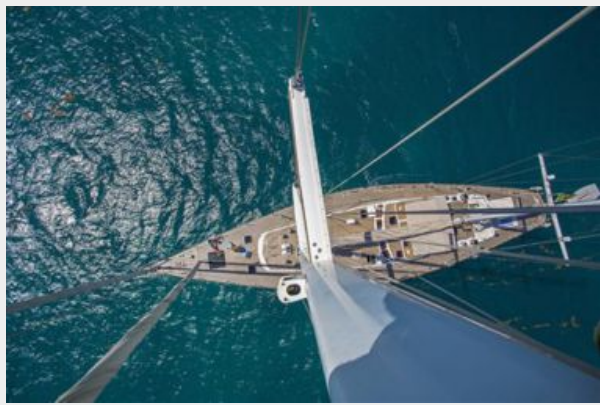
COCKPIT TABLE



COCKPIT TABLE



AERIAL VIEW



EXTERIOR



EXTERIOR



EXTERIOR



EXTERIOR



CONTACTS

Andrey Shestakov, leading yacht broker of the sales department of Shestakov Yacht Sales Inc. Shestakov Yacht Sales Inc., the official representative of the Miami/Fort Lauderdale FL headquarters.

Contact details

Email: andrey@shestakovyachtsales.com

Web: shestakovyachtsales.com/en/

Telephones

USA: +1(954)274-4435

Office hours

Monday – Saturday: **9:00 - 21:00** EDT

Sunday: **closed**

Address



Harbour Towne Marina, 850 NE 3rd St,
STE 213, Dania, FL 33004