

AMANTE — HYLAS



Builder: HYLAS

Year Built: 2007

Model: Cruising Sailboat

Price: PRICE ON APPLICATION

Location: Spain

LOA: 70' 0" (21.34m)

Beam: 18' 0" (5.49m)

Min Draft: 8' 6" (2.59m)

Max Draft: 0' 0" (0.00m)

Cruise Speed: 10 Kts. (12 MPH)

Max Speed: 11 Kts. (13 MPH)

Our experienced yacht broker, Andrey Shestakov, will help you choose and buy a yacht that best suits your needs **AMANTE — HYLAS** from our catalogue. Presently, at Shestakov Yacht Sales Inc., we have a wide variety of yachts available on our sale's list. We also work in close contact with all the big yacht manufacturers from all over the world.

If you would like to buy a yacht **AMANTE — HYLAS** or would like help answering any questions concerning purchasing, selling or chartering a yacht, please call **+1(954)274-4435**

TABLE OF CONTENTS

TABLE OF CONTENTS	2
SPECIFICATIONS	5
Overview	5
Basic Information	5
Dimensions	5
Speed, Capacities and Weight	6
Accommodations	6
Hull and Deck Information	6
Engine Information	6
DETAILED INFORMATION	7
REMARKS	7
ACCOMMODATIONS	7
NAVIGATION EQUIPMENT	9
ENTERTAINMENT EQUIPMENT	9
ELECTRICAL SYSTEM	9
ENGINE/MECHANICAL EQUIPMENT	10
HULL	11
DECK	11
COCKPIT	12
MAST and RIGGING	12
SAILS	12
DECK EQUIPMENT and FITTINGS	12
ADDITIONAL	13
ACCESSORIES	13
EXCLUSIONS	14
Exclusions	14
Disclaimer	14
PHOTOS	15

Profile	15
Stbd. Salon, Looking Fwd.	15
Port Salon, Table Closed	15
Port Salon, Table Open	15
Stbd. Salon, Looking Aft	15
Nav Station	15
Passageway Fwd.	16
Salon, Looking Aft	16
Guest Head	16
Fwd. Guest Stateroom	16
Guest Shower	17
Port Guest Cabin	17
Galley, Looking Fwd.	17
Galley, Looking Aft	17
Passageway Aft	18
Owner's Stateroom	18
Owner's Stateroom, Stbd. Side	18
Owner's Stateroom, Port Side	18
Owner's En-suite Head	19
Owner's En-suite Shower	19
Stbd. Guest or Crew Qtrs.	19
Stbd. Guest or Crew Head	19
Forepeak	20
Foredeck, Looking Fwd.	20
Foredeck, Looking Aft.	20
Cockpit Enclosure	20
Looking Aft, Cockpit Table Extended	20
Main Cockpit, Looking Fwd.	20
Twin Pedestals	21

Steering Station, Stainless Wheel	21
Stern, Passarelle	21
Transom, Garage	21
Engine Room, Aft	21
Engine Room, View from Salon	21
Layout	22
Layout	22
CONTACTS	23
Contact details	23
Telephones	23
Office hours	23
Address	23

SPECIFICATIONS

Overview

AMANTE is a great example of this popular Frers design built to high standards by Hylas yachts. She benefits from owners who have invested considerable time and energy into the equipment specifications, design modifications and interior décor/styling, all of which combine to make a magnificent yacht.

Since her launch in 2007, AMANTE has proven to be a fast, safe and extremely comfortable world cruiser with an excellent four-cabin layout ideal for both private (in this case) or charter use.

Under her original ownership and always well cared for, the yacht has enjoyed continual upgrades and improvements as noted herein, with recent work undertaken in Greece and in Italy. The vessel has RCD / EU certification, category A.

Basic Information

Category: Cruising Sailboat

Model Year: 2007

Year Built: 2007

Country: Spain

Vessel Top: Dodger

Dimensions

LOA: 70' 0" (21.34m)

LWL: 61' 7" (18.77m)

LOD: 69' 7" (21.21m)

Beam: 18' 0" (5.49m)

Min Draft: 8' 6" (2.59m)

Max Draft: 0' 0" (0.00m)

Speed, Capacities and Weight

Cruise Speed: 10 Kts. (12 MPH)

Max Speed: 11 Kts. (13 MPH)

Displacement: 84175 Pounds

Water Capacity: 400 Gallons

Fuel Capacity: 700 Gallons

Accommodations

Total Cabins: 4

Total Berths: 5

Sleeps: 10

Total Heads: 4

Hull and Deck Information

Hull Material: Fiberglass

Deck Material: Fiberglass

Hull Configuration: Centerboard

Hull Color: Stars & Stripes Blue

Hull Designer: German Frers

Engine Information

Engines: 1

Manufacturer: Yanmar

Model: 4LHA-STP

Engine Type: Inboard

Fuel Type: Diesel

DETAILED INFORMATION

REMARKS

AMANTE is a great example of this popular Frers design built to high standards by Hylas yachts. She benefits from owners who have invested considerable time and energy into the equipment specifications, design modifications and interior décor/styling, all of which combine to make a magnificent yacht.

Since her launch in 2007, AMANTE has proven to be a fast, safe and extremely comfortable world cruiser with an excellent four-cabin layout ideal for both private (in this case) or charter use. Under her original ownership and always well cared for, the yacht has enjoyed continual upgrades and improvements as noted herein, with recent work undertaken in Greece and in Italy. The vessel has RCD / EU certification, category A.

ACCOMMODATIONS

Three en-suite owner/guest cabins, plus additional en-suite crew/guest cabin. Finely crafted solid teak joinery work finished to a high level throughout the interior, including all flush-mounted raised-panel or louvered cabinet doors and burlled fiddle inlays. Cabin soles are satin-finished teak with ebony inlays (stripped and refinished 2017) with custom locking mechanisms. Head and shower areas are all painted white Awlgrip and feature Corian vanity tops, solid Corian sinks and heated towel racks. Hanging lockers are lined with cedar. OceanAir hatch screens/blinds throughout, with motorized shades in main salon. Upholstery is custom leather, with custom mattresses, tasteful bedding, towels and other décor throughout. Crew covers and sole covers.

FORWARD GUEST STATEROOM:

Beginning forward is a private stateroom with a centerline queen berth, seat and significant storage space including two large hanging lockers. There are two hull portlights and a deck hatch. An en-suite head is forward, along with a shower stall shared with the port guest cabin.

PORT GUEST STATEROOM:

Forward of the main salon and to port is the second guest cabin, featuring a generous double berth (new mattress 2017), hanging locker and multiple drawers. There are three opening portholes and a deck hatch. A head and shower stall is across the passageway, which can be closed off at night to provide en-suite access.

MAIN SALON:

AMANTE's main salon is quite spacious for a vessel of this size, due in part to her generous 18' beam. A large L-settee is to port, with a beautiful burlled table that expands as needed to accommodate six comfortably, and can be raised or lowered by electric lift. Two custom chairs

are inboard, with anchors for tie-down while underway. To starboard is a full-length settee with an up/down flat screen TV hidden from view. The entire space feels light and open due to numerous hatches, white-trimmed deck portlights and two hull windows.

NAV STATION:

Aft and to starboard is a U-shaped navigation station with easy access to the cockpit. There are built-in backlit switch panels, navigation instruments, a comfortable pedestal chair, plus remote control panels for the watermaker, furnace, fuel usage and tank monitors. The workspace also includes a chart table (refinished 2016) with custom storage for computer.

GALLEY:

Further aft and to port is a long walk-through galley that is fully equipped for comfortable living at sea or on anchor. There are several well-thought-out storage lockers for glass, dinnerware and appliances, including a full pantry. Some of the many features include:

- Granite countertops (inboard galley counter, sinks and faucets replaced Oct 2015)
- Twin Frigoboat stainless steel front-opening DC refrigerator units (can be used as freezer units)
- Frigoboat top-opening DC freezer compartment
- Novacool beverage cooler/refrigerator adjacent to companionway for convenient day use
- U-line icemaker
- Force 10 propane stove/oven with granite cover
- GE Advantium convection/microwave oven
- Fisher & Paykel dishwasher drawer
- Broan trash compactor
- Espresso machine
- Instant hot water dispenser
- Full complement of dishes, glasses, cutlery, galleyware etc.
- Full-sized stacked Miele stainless washer and dryer units at aft end
- (6) Opening portholes for exceptional light and ventilation
- 230v Euro-style outlets added to galley in 2016
- Galley cabinets were refinished in 2016

CREW QUARTERS/GUEST CABIN:

A passageway leads aft along the starboard side to the owner's cabin, with a roomy fourth cabin outboard – quite suitable for crew or guests --with over/under berths. Private head and shower stall. There are two opening portholes, plus one in the shower.

MASTER STATEROOM:

The owner's private stateroom is located aft and features a large queen-size berth on centreline (new mattress 2017), with a bureau to port and seat/desk area to starboard. Extended beam is

carried well aft to create a spacious, open cabin accentuated by twin hull portlights, a deck hatch and six opening portholes. A private head with separate shower stall and opening porthole is found along the port side, with a passageway forward to the laundry and galley that can be opened when desired.

NAVIGATION EQUIPMENT

- Raymarine GPS/chartplotter with dual sensors, GS 125 glass bridge displays at each helm, and
- 12" ES display in cockpit
- GS 165 glass bridge display at nav station, plus option to display on the salon TV screen
- Chartplotters upgraded to current generation 2017 with Wi-Fi and iPad integration
- Radar upgraded 2017 to Quantum digital wireless system
- Raymarine sailing instruments with speed, wind and depth in cockpit and repeaters at nav station
- Raymarine ST 6002 autopilot with remote at nav station, plus wireless remote
- ICOM M-802 SSB
- ICOM 504 VHF
- Immarsat satphone with internet interface
- Lenovo laptop (Oct 2015), fax, printer and interface with plotter, GPS, sat phone
- WiFi on mast with boat network – system upgrade 2015
- Digital fishfinder
- Cell phone repeater on mast
- Sirius weather
- Deck camera viewable on nav station chartplotter screen

ENTERTAINMENT EQUIPMENT

- Main salon widescreen 47" multi-region TV, with lift to hide from view
- 42" US TV on the forward bulkhead
- Custom flat screen TV in owner's cabin (new 2017) hidden behind one-way mirror
- TVs to salon and owner cabin upgraded 2017
- Flat screen TVs in each double guest cabin
- Independent DVD players and audio amplifiers in each cabin (all iPod-ready)
- Alpine entertainment management system to feed audio to all cabins and cockpit
- Jamo speakers and controls throughout
- Blu-Ray system added to salon and aft cabin in 2017
- KVH Tracvision sat TV will track both US and Euro satellites
- Upgrade of satellite TV dish and electronics to current generation

ELECTRICAL SYSTEM

AMANTE features a customized electrical system, whereby all AC functions are powered by multiple heavy-duty inverters, drawing from a large 24 volt battery bank that is charged directly from shore power or via a DC generator. In addition, all key systems – refrigeration, hydraulics, navigation, lighting, water, waste pumps, water heater, heads and water-maker are DC-based. This provides two primary advantages: universal shore power compatibility around the world, and the ability to run “quiet ship” for extended periods of time. Features include:

- 24 Volt DC electrical system with custom panels and full meters for managing current flow
- (2) 32 amp/240 volt shore inlets (both bow and stern) with multiple adapters
- (2) Victron isolation transformers able to handle shore power anywhere in the world
- (4) Victron 100 amp/24 volt battery chargers with balancer added 2016
- (6) Victron 3 kW inverters to power all AC functions (with the exception of dive compressor and air conditioning, which runs off the generator)
- Fischer Panda 15 kW/24 volt DC generator, new in 2011 (1,800 hours, 3/2019) with battery monitor added, 2016
- Large house bank with Victron AGM 12 volt batteries, total 1,470 amp-hrs (all new spring, 2017)
- Separate battery banks for engine, generator, electronics and bow thruster
- Bow thruster battery new spring 2016
- Battery for electronics new spring 2017
- Balmar 220 amp alternator in addition to standard 70 amp (new 2014)
- Interior lights and dimmers retrofitted with LED lighting summer 2015
- TV/phone inlet
- Numerous shore cables and European adapters
- Electrical bonding system, including two 3” copper strips, bow to stern each side
- 12-volt plugs in cockpit and at nav station
- Cabin fans at each berth and in main salon and galley
- Exhaust blowers for all heads
- Central vacuum system with toe-kick sweep inlets
- Vimar light switches with dimmers throughout
- Custom monitor panels for easy fuel and water tank level management
- Rope accent and foot lighting throughout, including cockpit
- Multi-color selectable courtesy lights below
- Twin underwater lights at transom
- Transom stair lighting
- LED navigation lights

ENGINE/MECHANICAL EQUIPMENT

- Yanmar 4LHA-STP 240 hp diesel with dripless shaft seal, shaft isolation coupler and Maxi 3-blade feathering propeller (propeller had a factory rebuild 2014)
- Shaft cutters and line deflector for rudder
- Flowscan fuel monitoring system

- Electric oil change pump for main engine and generator
- Dual Racor fuel filters with bypass valves for fuel polishing
- Lewmar 300 24 volt (2 new batteries and charger 2016)
- Fireboy automatic engine room fire extinguisher
- Central dual-stage Cruisair chilled water air-conditioning system
- Diesel-fired furnace for continuous hot water and cabin heating
- Pressurized fresh water with dual pumps
- Seagull IV-X6 water filtration system plumbed to all cold water taps
- 11-gallon hot water tank and back-up electrical heating coil
- Spectra 40 gph DC watermaker
- Tecma automatic toilets with fresh water flush and custom controls
- (3) Gray water tanks and (2) black water tanks, all fiberglass, each with custom monitor panel and automatic pump-out
- (3) Automatic electric bilge pumps, plus lazarette pump
- Manual bilge pump
- Clark dive compressor

HULL

Solid hand-laid Twaron-reinforced fiberglass hull using vinylester resins and isophthalic gel coat with epoxy barrier coating. There is a watertight collision bulkhead aft of forepeak locker. Rudder removed, 2019, with all new bearings. Topsides are Awlgripp in "Stars & Stripes Blue" with clear coat, gold cove stripe, white boot stripe and black bottom. Bottom was stripped in 2017, with new paint, March, 2019. There is a teak rub-rail with stainless striker and (6) Lexan topside windows. Centerboard configuration offers minimum draft of 8'-6" with board up and a maximum draft of 12'-4" with board down.

DECK

Deck is fiberglass with balsa core, white gelcoat and molded-in tan nonskid. "Scooped" transom with molded-in steps, swim platform and built-in swim ladder. There is a transom garage door that opens hydraulically for easy access to extensive storage space with custom shelving, along with large corner lazarette lockers each side, accessible on the aft deck. On the foredeck, there is a deep forepeak locker with line hangers and separate split chain locker forward.

- Teak toe rails are bare, with rounded edges for easy maintenance
- All stainless deck hardware including grab rails, (6) stainless hatches, numerous opening portholes and dorade vents, double anchor rollers, genoa tracks, mooring cleats, chocks etc.
- Stainless bow protection plate (added 2017)
- Stainless deck fairlead shields (added 2015)

COCKPIT

One of the many highlights of AMANTE's design is the spacious cockpit, with twin helm stations for easy access from the aft deck and great visibility while steering. The cockpit seating was customized by the owner to maximize seating for ten comfortably around a beautiful, varnished 6' teak table with built-in drink cooler.

Teak in cockpit replaced Jan 2017. The twin helms are designed for short-handed sailing with all sail controls within easy reach. Each station can be engaged independently and features customized back-lit panels (2009).

MAST and RIGGING

- Forespar three-spreader aluminium mast, painted white (new paint 2019)
- Navtec rod standing rigging (refurbished, 2019, with new heads and some new shrouds)
- Leisure Furl hydraulic in-boom mainsail furling system (boom painted 2014)
- Furlex hydraulic genoa and staysail furlers (genoa furler rebuilt 2014)
- PBO running backstays with retrieving lines (backstays replaced 2016)
- Carbon spinnaker/whisker pole stored on mast (painted 2014)
- Navtec hydraulic boom vang and split backstay controls
- Boom preventer built in
- Lewmar mainsheet traveler system
- Genoa and staysail sheets, mainsail sheet and mainsail halyard, all new summer 2015
- Steaming light; foredeck light; aft flood light; up/down spreader lights
- Deck floodlight, mast down-lights and mast up-lights replaced to LED in summer 2015
- Air horn

SAILS

- Doyle Hydranet full- battened furling mainsail
- Doyle Hydranet 135% furling genoa
- Doyle furling staysail
- Doyle asymmetrical spinnaker

DECK EQUIPMENT and FITTINGS

Winches (being re-chromed winter 2017-18):

- Antal W 80-3 hydraulic self-tailing primary winches
- Antal W 66 hydraulic self-tailing mainsheet and main/spinnaker halyard winches
- Antal W 66 hydraulic self-tailing staysail/runner winches
- Antal W 44 self-tailing traveler control winches

- Antal W 52 self-tailing genoa and staysail halyard winches at mast

Remote wireless controls for furlers, main/spinnaker halyards and transom garage door.

ADDITIONAL

- Twin Lewmar hydraulic anchor windlasses
- 50 kg Bruce anchor with 300' ½" chain plus 150' rode
- Delta 90 lb. anchor with 300' ½" chain plus 150' rode
- Anchor wash-down pump (fresh and salt water)
- Cockpit cushions with backrest cushions
- Helm cushions with backrest bolsters
- Covers for cockpit table and helm stations
- Dodger and bimini (tan), with clear connector, helm windows and full enclosures – (sprayhood, Bimini and cockpit enclosure) (new winter 2015-16)
- Adjustable white and blue lighting wired into bimini
- Multiple stainless beverage holders throughout cockpit
- Stern pulpit extended to side gates, with drop-down teak pushpit seats each side
- Shoreline reel and cord for stern tie
- Carbon fiber passarelle / gangway
- Teak/stainless side boarding ladders, port and starboard
- Hot/cold shower at transom
- Ritchie 6" compass at each pedestal with stainless grab bars
- 20- and 10-lb propane tanks and regulator in ventilated deck locker
- Varnished teak companionway hatch with drop-down self-storage
- Dinghy chocks receivers on foredeck
- Leather steering wheel covers
- Leather swim ladder handle / stern bumper covers
- Stainless gas grill
- Numerous spares
- Full tool kit with custom storage racks in engine room
- Fenders and dock lines

ACCESSORIES

Tender:

- AB 13 AL dinghy with aluminum bottom (2012), with storage covers
- Honda 30 hp outboard motor (2012)
- Tender stows on Simpson stainless steel dinghy davits with electric hoist

Safety:

- Winslow 8-man life raft in valise
- Switlik MOM
- (8) Life jackets
- Ditch bag with EPIRB, supplies
- Sea anchor
- Twin radar reflectors on mast
- Flare kit
- Full medical kit

EXCLUSIONS

- Personal effects
- Dive equipment

Exclusions

Owner's personal belongings.

Disclaimer

The Company offers the details of this vessel or yacht in good faith but cannot guarantee or warrant the accuracy of this information nor warrant the condition of the vessel. A buyer should instruct his representatives, agents, or his surveyors, to investigate such details as the buyer desires validated. This vessel or yacht is offered subject to prior sale, price change, or withdrawal without notice.

PHOTOS

Profile



Stbd. Salon, Looking Fwd.



Port Salon, Table Closed



Port Salon, Table Open



Stbd. Salon, Looking Aft



Nav Station



Salon, Looking Aft



Passageway Fwd.



Fwd. Guest Stateroom



Guest Head



Guest Shower



Port Guest Cabin



Galley, Looking Fwd.



Galley, Looking Aft



Passageway Aft



Owner's Stateroom



Owner's Stateroom, Stbd. Side



Owner's Stateroom, Port Side



Owner's En-suite Head



Owner's En-suite Shower



Stbd. Guest or Crew Qtrs.



Stbd. Guest or Crew Head



Forepeak



Foredeck, Looking Fwd.



Foredeck, Looking Aft.



Cockpit Enclosure



Looking Aft, Cockpit Table Extended



Main Cockpit, Looking Fwd.



Twin Pedestals



Steering Station, Stainless Wheel



Stern, Passarelle



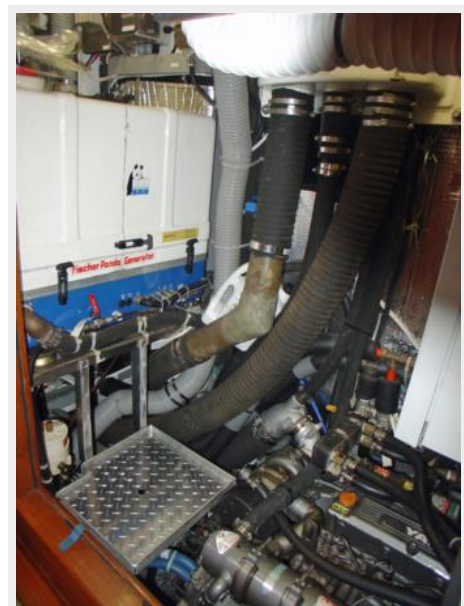
Transom, Garage



Engine Room, View from Salon



Engine Room, Aft



Layout



Layout



CONTACTS

Andrey Shestakov, leading yacht broker of the sales department of Shestakov Yacht Sales Inc. Shestakov Yacht Sales Inc., the official representative of the Miami/Fort Lauderdale FL headquarters.

Contact details

Email:
andrey@shestakovyachtsales.com

Web: shestakovyachtsales.com/en/

Telephones

USA: **+1(954)274-4435**

Office hours

Monday – Saturday: **9:00 - 21:00 EDT**

Sunday: **closed**

Address



Harbour Towne Marina, 850 NE 3rd St,
STE 213, Dania, FL 33004