

## ANGELES — VIKING



**Судостроитель:** VIKING

**Год постройки:** 2015

**Цена:** **ЦЕНА ЯХТЫ ПО ЗАПРОСУ**

**Местонахождение:** Costa Rica

**Длина общая:** 56' 5" (17.20m)

**Ширина:** 17' 9" (5.41m)

**Макс. осадка:** 5' 1" (1.55m)

**Крейс. скорость:** 33 Kts. (38 MPH)

**Макс. скорость:** 39 Kts. (45 MPH)

Купить **Angeles — VIKING** а также выбрать подходящую вам яхту из нашего каталога яхт вам поможет опытный яхтенный брокер Андрей Шестаков. На сегодняшний день компания **Shestakov Yacht Sales Inc.** имеет большое количество яхт в собственном списке продаж, а также тесно сотрудничает со всеми крупными яхтенными производителями по всему миру.

Для того чтобы купить яхту **Angeles — VIKING** а также проконсультироваться по любому вопросу связанному с покупкой, продажей, чартером яхт позвоните по телефону **+7(918)465-66-44**.

# ОГЛАВЛЕНИЕ

ОГЛАВЛЕНИЕ	2
ХАРАКТЕРИСТИКИ	5
Обзор	5
Основная информация	5
Размеры	5
Скорость, вместимость и масса	6
Размещение	6
Корпус и палуба	6
Информация о двигателе	6
ПОДРОБНОЕ ОПИСАНИЕ	7
Salon	7
Galley	7
Dinette	8
Master Stateroom	8
Master Stateroom Head	8
Forward Stateroom	9
Forward Stateroom Head	9
Port Stateroom	9
Fly Bridge	9
Cockpit	10
Deck	11
Hull	11
Engine Room	11
Atlantic Marine Electronics	11
Disclaimer	17
Исключения	17
Отказ от ответственности	17
ФОТОГРАФИИ	19

Viking 55 Convertible Salon	19
Viking 55 Convertible Salon/Galley	19
Viking 55 Convertible Salon/Galley	19
Viking 55 Convertible Salon Seating	19
Viking 55 Convertible Galley	19
Viking 55 Convertible Galley	19
Viking 55 Convertible Master Stateroom	20
Viking 55 Convertible Master Stateroom	20
Viking 55 Convertible Head	20
Viking 55 Convertible Guest Stateroom	20
Viking 55 Convertible Guest Stateroom	20
Viking 55 Convertible Head	20
Viking 55 Convertible Forward Stateroom	21
Viking 55 Convertible Helm	21
Viking 55 Convertible Helm	21
Viking 55 Convertible Helm	21
Viking 55 Convertible Helm	21
Viking 55 Convertible Bridge Controls	21
Viking 55 Convertible Engine Room	22
Viking 55 Convertible Engine Room	22
Viking 55 Convertible Engine Room	22
Viking 55 Convertible Engine Room	22
Viking 55 Convertible Engine Room	22
Viking 55 Convertible Engine Room	22
Viking 55 Convertible Engine Room	22
Viking 55 Convertible Running Profile	23
Viking 55 Convertible Running Port Profile	23
Viking 55 Convertible Port Profile	23
Viking 55 Convertible Running Forward	23
Viking 55 Convertible Port Profile	23

---

Viking 55 Convertible	23
Viking 55 Convertible	24
Viking 55 Convertible	24
Viking 55 Convertible	24
Viking 55 Convertible	24
КОНТАКТЫ	25
Контактная информация	25
Телефоны	25
Время работы	25
Адрес	25

# ХАРАКТЕРИСТИКИ

## Обзор

This 2015 Viking Convertible is fully loaded and ready to fish. She is equipped with a Palm Beach Tuna Tower, premier electronics, teak cockpit/mezzanine, and is powered by MAN V12's with low hours.

This high performance sport fish is ready to go, available in beautiful central Pacific of Costa Rica!

## Основная информация

**Подкатегория:** Катер для спортивной рыбалки

**Модельный год:** 2015

**Год постройки:** 2015

**Страна:** Costa Rica

**Верх:** Full / Tuna Tower

## Размеры

**Длина общая:** 56' 5" (17.20m)

**Длина по ватерлинии:** 48' 5" (14.76m)

**Длина палубы:** 55' 0" (16.76m)

**Ширина:** 17' 9" (5.41m)

**Макс. осадка:** 5' 1" (1.55m)

**Трапы:** 14' 2" (4.32m)

**Длина привального бруса:** 55' 0" (16.76m)

## Скорость, вместимость и масса

---

**Крейс. скорость:** 33 Kts. (38 MPH)

**Крейсерская скорость поворота:** 2000 Kts.

**Макс. скорость:** 39 Kts. (45 MPH)

**Макс. скорость поворота:** 2300 Kts.

**Водоизмещение:** 77700 Pounds

**Вместимость воды:** 225 Gallons

**Вместимость сточного бака:** 100 Gallons **Объем топливного бака:** 1600 Gallons

## Размещение

---

**Всего кают:** 3

**Спальные места:** 6

## Корпус и палуба

---

**Материал корпуса:** Fiberglass

**Материал палубы:** Fiberglass

**Цвет корпуса:** Viking Green

## Информация о двигателе

---

**Двигатели:** 2

**Производитель:** MAN

**Модель:** CR1550

**Тип двигателя:** Inboard

**Тип топлива:** Diesel

---

# ПОДРОБНОЕ ОПИСАНИЕ

---

## Salon

---

- Electric panel up
- Clear Ice Maker
- Viking Home Theater
- Door with electric opener
- Carpet runner, full, canvas
- Cocktail table
- Dimmers for quartz lights
- Teak wire box
- Teak on salon entertainment center top
- Teak trim where amtico flooring meets carpet
- Amtico flooring at salon entrance way
- Teak on valances
- Flat screen 46" TV
- Companionway: costa, canvas carpet runner with step covers
- Bar stools on the aft side
- Bar stools without backs
- Salon floor backing plates for stools aft
- Salon door type catches on stateroom doors
- Sofa upgraded style (drewberry in ultraleather marble) with no arm
- Wrapped hatch carpet
- Custom wallpaper material
- Custom headliner material throughout boat (mocasin chamois), including companionway walls and hull sealers.
- Brushed nickel hardware throughout
- Brushed nickel coverplates for switches and receptacles throughout
- Led interior lights throughout
- Prestige decor
- Interior wood to be random teak

## Galley

---

- Drawers under counter refrigerator and freezer
- 110v outlet next to switch on bottom of upper cabinet above sink
- Chrome faucet
- High polished corian counter top

- Three (3) burner recessed range
- Washed teak antico flooring
- Galley overhang
- Satin nickel faucet
- Silistone color on counter top
- Granite counter top
- Mirror galley backsplash
- Channel glass backsplash

---

## Dinette

---

- Teak table with teak pedestal
- Dimmer on overhead led lights

---

## Master Stateroom

---

- Mattress Viking slumber #8
- Night table lamps with hardwire
- Wallpaper installed throughout (dynasty silk)
- Teak on end table tops
- Safe under lift up bed top
- 12v CD Stereo and DVD player
- 26" flat screen TV
- Dimmer on overhead led lights
- Headboard: fully upholstered panel on soffit face above bed from top
- Extended bed top
- Extra set of sheets

---

## Master Stateroom Head

---

- Wallpaper RJF Pulse-Timbre
- Antico flooring (washed teak)
- Satin nickel in shower fixtures
- Brushed nickel in towel bars and rings
- Satin nickel in faucet
- Granite on vanity top (silistone, color-quasar)



- Upgraded vanity tops to silistone color

---

## Forward Stateroom

---

- Layout: VIP Crossover forward
- Viking mattress slumber #6
- Custom wallpaper installation (dynasty silk)
- Dimmer on overhead led lights

---

## Forward Stateroom Head

---

- Teak face on lower vanity
- Mirror above upper vanity insert
- Custom wallpaper (plaza stripe-caribbean blue)
- Custom antico flooring (washed teak)
- Brushed aluminum shower door
- Satin nickel on shower fixtures
- Brushed nickel on towel bars and rings
- Satin nickel on faucet
- Granite on vanity top
- Upgraded vanity tops to silistone color

---

## Port Stateroom

---

- Custom wallpaper (dynasty silk)
- 19" flat screen TV
- Dimmer on overhead led lights
- Viking mattress slumber #6

---

## Fly Bridge

---

- Electronic trolling valves
- Electronic single lever controls for helm pod

- Recessed electronic boxes
- Push button for electronic boxes
- Fresh water outlet
- Buell air horns
- Horns mounted under bridge
- Freezer box
- Removable flybridge jumpseat backrest
- VHF Radio ICom-604
- Wires installed for PBT Tower
- AME Electronics
- Refrigerate bridge drink box
- Release teak helm pod
- ZF engine controls
- Ultra leather - MW for bench seat cushions
- Trillion Series Release Marine with ultra leather MW
- Rod racks for under bridge bench seats

## Cockpit

---

- Mezzanine cockpit
- Upgraded mezzanine cushions to ultra leather bulkskin
- Transom swim steps
- Ice Machine with discharge into cockpit sole box
- Four (4) additional rod holders
- Two (2) 24v outlets forward under coaming (one on each side)
- Fighting chair
- Awlgrip lazarette
- Y-Valve for fresh and salt water washdowns in cockpit
- Refrigerated stepbox
- Gate and transom fish box
- Teak deck and mezzanine
- Freezer storage in mezzanine seat
- Port and starboard step box mezzanine refrigerated
- Storage lockers under port and starboard coamings
- Splitted lid for cockpit fish box
- Mezzanine seat with dividers in freezer
- Transom box as live well
- Tri-color rope lighting under coaming red, white, green
- Tri-color lights in cockpit overhang red, white, green

---

## Deck

---

- Bow cleats fore and aft
- Fresh water wash down at bow inside anchor locker
- Anchor bracket in anchor locker
- Recessed trim tab covers
- Gas springs for anchor locker hatch
- Forward window black mask
- Side mounted handrails following top of salon window

---

## Hull

---

- Hull color mist green
- Hull bottom Viking green
- Hull boot stripe Viking standard green
- Accent stripe 1/2" above boot stripe
- 2 deck hatches on aft
- Offshore bottom paint

---

## Engine Room

---

- 24v fuel priming pumps
- 21.5 Cummins generator
- 110v outlet on aft bulkhead at entrance way
- Fresh water pump
- 700 GPD Water maker with auto back flush
- Back up seawater pump
- Additional fuel tank for a total of three (3) tanks
- Hull material: fiberglass
- Magnetic switches for all bilge lights
- Awlgrip forward bilge and anchor locker

---

## Atlantic Marine Electronics

---

### RADAR

1.00 RADAR FURUNO NAVNET 3D DRS25A 25KW 96NM LESS ARRAY

1.00 RADAR ARRAY 6' FURUNO#XN13A/6

1.00 PLOTTER FURUNO NAVNET 3D MFDBB PROCESSOR

1.00 GPS ANTENNA FURUNO GP330B

2.00 DVI EXTENDER ATLONA AT-DVI15SRS; VIEW NAVNET ON SALON TV

1.00 EXTRON 4 PORT DVI DISTRIBUTION AMP; 60-922-01

2.00 VIDEO DIST DVI-D CABLE 16' M-M DUAL LINK

2.00 MONITOR GLASS BRIDGE LED 15" KEPMGB-15

## **PLOTTER**

1.00 GARMIN GPSMAP8208 - 8" TS MFD; PRELOADED WITH COASTALS CHARTS;  
MOUNT IN DROP DOWN BOX

2.00 DVI EXTENDER ATLONA AT-DVI15SRS

1.00 DISTRIBUTION AMP EXTRON 4 PORT DVI 60-92; VIEW 8208 ON HELM DISPLAYS  
AND SALON TV

1.00 ADAPTER HDMI M TO DVI F; ATLONA AT14050

3.00 VIDEO DIST DVI-D CABLE 16' M-M DUAL LINK

1.00 GARMIN REMOTE INPUT DEVICE - GRID

1.00 GARMIN AIS-600 AIS TRANSPONDER

1.00 GARMIN GNT 10 N2K TRANSCEIVER

2.00 GARMIN QUATIX MARINE WATCH

1.00 GARMIN WIFI ADAPTER FOR BLUECHART MOBILE

1.00 GARMIN GXM52 WEATHER ANTENNA

1.00 GARMIN GMS10 NETWORK EXPANDER

## **NETWORK**

9.00 MICRO TEE MALE/FEMALE/FEMALE MARETRON CM

5.00 N2K MID DOUBLE-ENDED CORDSET 2M GRAY

3.00 N2K MID DOUBLE-ENDED CORDSET 3M GRAY

1.00 MICRO/MID POWERTAP TEE W/5M DROP

2.00 N2K MICRO TERMINATION RESISTOR MALE

1.00 MICRO BULKHEAD FEED THRU MHF-CM

40.00 N2K MID BULK CABLE GRAY MARETRON DG1

4.00 NMEA CONNECTOR MARETRON FA-CF-ST FEMALE

4.00 NMEA CONNECTOR MARETRON FA-CM-ST MALE

1.00 CONVERTER DC/DC PULS 96W 18-32VDC IN VDC

## **SOUNDER**

1.00 FURUNO FCV1200BB SOUNDER W/LANDSCAPE CTRL

1.00 FURUNO CA200B-8B 2KW 200KHZ TRANSDUCER

1.00 FURUNO CA50BL-12HR 2KW 50KHZ TRANSDUCER

1.00 MONITOR GLASS BRIDGE LED 15" KEPMGB-15

1.00 ATEN VS94A 4 PORT VGA SPLITTER

4.00 VGA CABLE 10' M-M EXTRON

## **DIGITAL DEPTH/TEMP**

1.00 DISPLAY, FURUNO RD33 DATA ORGANIZER VIKING STANDARD EQUIPMENT

1.00 XDCR HI-PREC.TMP/2 FURUNO#235DHT-LMSE

## **AUTOPILOT**

1.00 GARMIN GHP12 W/GHC20 AUTOPILOT

1.00 GARMIN AP SHADOW DRIVE SENSOR

1.00 GARMIN RRU GRF10 SENSOR

1.00 GARMIN GRF10 15M EXTENSION CABLE; 010-11829-02

1.00 GARMIN GHP12/20 CCU 15M EXTENSION CABLE

1.00 GARMIN 24" ACTUATOR POWER CABLE

## VHF

0.00 VHF RADIO ICOM IC-M604 BLACK VIKING STANDARD EQUIPMENT

1.00 VHF RADIO ICOM IC-M604 BLACK

2.00 VHF FLUSH MOUNT

2.00 ANTENNA PHASE III 18' VHF 6018-SHAKESPEARE

2.00 ANTENNA MOUNT RUPP AME TOWER/HARDTOP PAK

2.00 VHF SPEAKER EXTERNAL MB-41 BLACK; MOUNT OVERHEAD IN TEASER REEL BOX

## STEREO

1.00 FUSION MS-IP700i STEREO W/ INTERNAL IPOD DOCK AND ADDITIONAL LINE WITH WIRELESS CONNECTIVITY FOR OPTIONAL CONTROL W/ iOS APP; AM/FM TUNER, VHF RECEIVER, INTERNAL IPOD/iPHONE/USB DOCK

1.00 FUSION MS-IP700i DROP CABLE

2.00 SPEAKER JL AUDIO 7.7 COAXIAL M770-CCX; BRIDGE: 1 PAIR FWD, 1 PAIR AFT

2.00 AMPLIFIER JL AUDIO MHD600/4 4-CHAN

1.00 SATRADIO SIRIUS ANTENNA SHAKE SRA-40

1.00 FUSION MS-NRX200i WIRED REMOTE

1.00 FUSION MS-ACSXV-ONLY SIRIUS/XM TUNER

1.00 STEREO SPEAKER JL AUDIO 7.7" M770-TCS-W; INSTALL IN CUSTOM BOX UNDER COCKPIT COMBING

## **SATCOM**

- 1.00 KVH TRACPHONE V3-IP WHITE BASE W/ICM
- 1.00 ROUTER PAKEDGE K6
- 1.00 PAKEDGE W6 WIRELESS ACCESS POINT
- 1.00 ETHERNET SWITCH PAKEDGE S8W 8-PORT
- 1.00 PC SWITCH RJ45 4 TO 1 APC 1399
- 1.00 APC BE650G UPS
- 1.00 PANASONIC 2-LINE CORDLESS PHONE; KX-TG9381T
- 1.00 ADDITIONAL HANDSET FOR KXTG9381T PHONE

## **CELL**

- 1.00 SIERRA WIRELESS GX440-VER MODEM w/DC POWER CABLE
- 2.00 SIERRA WIRELESS GX440 ANTENNA

## **CAMERA**

- 3.00 CAMERA MINI BALL WITH IR GOST PM-MINI; ENGINE ROOM FWD LOOKING AFT
- 1.00 3V DUAL COMP VID AMP 2 IN 3 OUT AMP MDA
- 1.00 COLOR QUAD CAMERA SWITCH W/ ZOOM APP

## **THERMAL IMAGING**

- 1.00 FLIR M625XP THERMAL IMAGER W/JCU; SINGLE PAYLOAD
- 1.00 VIDEO DIST AMP MDA 5V COMPOSITE VIDEO; 1 X 5 WITH INPUT LOOP THRU, EXTRON; VIEW FLIR ON HELM DISPLAYS, SALON AND MSR TVS
- 1.00 FLIR POWER OVER ETHERNET INJECTOR
- 1.00 PLOTTER ETHERNET SWITCH ADAM-6520; PROVIDE CONTROL OF FLIR FROM URC REMOTE

1.00 AME FLIR M-SERIES HARDTOP MOUNT

1.00 CHANNELPLUS 5525 2 CHANNEL MODULATOR

## **SATTV**

1.00 SATELLITE TV KVH TRACVISION HD7; SEE COVERAGE MAP FOR SERVICE AREA DETAILS, OPTIONAL CONFIGURATIONS AVAILABLE

2.00 DSS RECEIVER DIRECTTV HR24 HD/DVR; SALON AND MSR

1.00 KVH DIRECTV H25 HD DSS RECEIVER; BRIDGE RECEIVER

2.00 APC BE650G UPS; SALON AND MSR

## **SALON**

1.00 URC MX-5000i REMOTE CONTROL

1.00 BASE STATION URC MRF-350i

2.00 BALUN, SNAP AV B-RGBLR-350 COMPONENT & STEREO AUDIO; VIEW SALON DVR ON FWD STATEROOM TV

1.00 SNAP AV 1X4 IR REPEATER; PROVIDE IR CONTROL OF SALON RECEIVER FROM FSR

1.00 CONVERTER VGA-HDMI SNAP AV B200VGLRTOHD; CONVERT VGA FROM SOUNDER TO HDMI FOR DISPLAY ON SALON TV

## **TOWER**

1.00 GARMIN GPSMAP8212 - 12" TS MFD; PRELOADED WITH COASTALS CHARTS

1.00 DISPLAY, FURUNO RD33 DATA ORGANIZER

1.00 VHF COMMAND MIC ICOM HM-162 B BLACK

2.00 VHF EXTENSION COMMAND MIC ICOM OPC-1541

## **COCKPIT**



1.00 GARMIN GPSMAP8212 - 12" TS MFD; PRELOADED WITH COASTALS CHARTS

## MISC

1.00 INSTALL SPLIT LIDS ON RADIO BOXES

## NET

1.00 LUMISHORE TIX801-CCP-FF-2 COLOR CHANGE; TWO FF UWL LIGHTS W/ CONTROLLER; 2 LIGHTS OUT TRANSOM

2.00 LUMISHORE TIX801-CCP-FF COLOR CHANGE; SINGLE FF UNDERWATER LIGHT; 2 LIGHTS POINTING DOWN

1.00 ENTTEC ODE MODULE 70305 LESS POWER SUPPLY 500738

1.00 ENTTEC 7V POWER SUPPLY FOR ODE MODULE 79111X

1.00 TECHNEC 5-PIN XLR MALE TO RJ45 ADAPTER

## Disclaimer

---

The Company offers the details of this vessel in good faith but cannot guarantee or warrant the accuracy of this information nor warrant the condition of the vessel. A buyer should instruct his agents, or his surveyors, to investigate such details as the buyer desires validated. This vessel is offered subject to prior sale, price change, or withdrawal without notice.

Mechanical Disclaimer Engine and generator hours are as of the date of the original listing and are a representation of what the listing broker is told by the owner and/or actual reading of the engine hour meters. The broker cannot guarantee the true hours. It is the responsibility of the purchaser and/or his agent to verify engine hours, warranties implied or otherwise and major overhauls as well as all other representations noted on the listing.

X

## Исключения

---

При продаже яхты исключаются личные вещи владельца.

## Отказ от ответственности

---

Компания предоставляет описание судна или яхты добросовестно, но не может гарантировать точность этой информации, а также не ручается за техническое состояние. Покупатель должен проинструктировать своих агентов или оценщиков исследовать представленную информацию более подробно, по собственному желанию. Продажа судна или яхты, изменение цены или снятие с продажи будет происходить без предварительного уведомления.

# ФОТОГРАФИИ

**Viking 55 Convertible Salon**



**Viking 55 Convertible Salon/Galley**



**Viking 55 Convertible Salon/Galley**



**Viking 55 Convertible Salon Seating**



**Viking 55 Convertible Galley**



**Viking 55 Convertible Galley**



**Viking 55 Convertible Master Stateroom**



**Viking 55 Convertible Master Stateroom**



**Viking 55 Convertible Head**



**Viking 55 Convertible Guest Stateroom**



**Viking 55 Convertible Guest Stateroom**



**Viking 55 Convertible Head**



**Viking 55 Convertible Forward Stateroom**



**Viking 55 Convertible Helm**



**Viking 55 Convertible Helm**



**Viking 55 Convertible Helm**



**Viking 55 Convertible Helm**



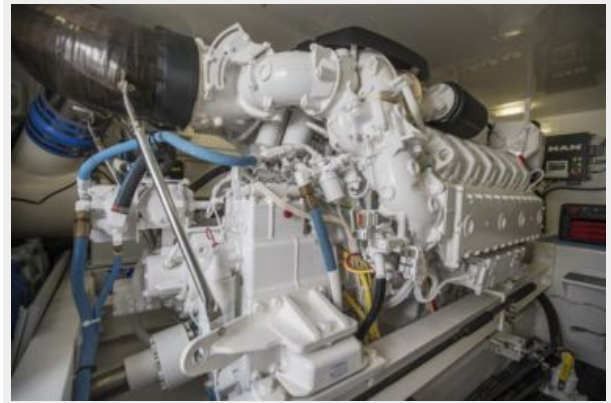
**Viking 55 Convertible Bridge Controls**



**Viking 55 Convertible Engine Room**



**Viking 55 Convertible Engine Room**



**Viking 55 Convertible Engine Room**



**Viking 55 Convertible Engine Room**



**Viking 55 Convertible Engine Room**



**Viking 55 Convertible Engine Room**



**Viking 55 Convertible Running Profile**



**Viking 55 Convertible Running Port Profile**



**Viking 55 Convertible Running Forward**



**Viking 55 Convertible Port Profile**



**Viking 55 Convertible Port Profile**



**Viking 55 Convertible**



**Viking 55 Convertible**



**Viking 55 Convertible**



**Viking 55 Convertible**



**Viking 55 Convertible**





# КОНТАКТЫ

---

Андрей Шестаков (Andrey Shestakov) – ведущий яхтенный брокер отдела продаж яхт и судов компании Shestakov Yacht Sales Inc. Официальный представитель Shestakov Yacht Sales Inc. для русскоговорящих клиентов в центральном офисе компании в Майами/Форт Лодердейл/Флорида/США.

## Контактная информация

---

Email: [andrey@shestakovyachtsales.com](mailto:andrey@shestakovyachtsales.com)

Web: [shestakovyachtsales.com](http://shestakovyachtsales.com)

## Телефоны

---

Краснодарский край: **+7(918)465-66-44**

США, Майами, Флорида: **+1(954)274-4435**

## Время работы

---

Понедельник – Суббота: **9:00 - 21:00**  
EDT

Воскресенье: **Закрито**

## Адрес

---



Harbour Towne Marina, 850 NE 3rd St,  
STE 213, Dania, FL 33004