

## WILD KINGDOM — WESTPORT



**Судостроитель:** WESTPORT

**Год постройки:** 2010

**Модель:** Моторная яхта

**Цена:** **ЦЕНА ЯХТЫ ПО ЗАПРОСУ**

**Местонахождение:** United States

**Длина общая:** 112' 0" (34.14m)

**Ширина:** 23' 9" (7.24m)

**Макс. осадка:** 5' 6" (1.68m)

**Крейс. скорость:** 18 Kts. (21 MPH)

**Макс. скорость:** 25 Kts. (29 MPH)

Купить **Wild Kingdom — WESTPORT** а также выбрать подходящую вам яхту из нашего каталога яхт вам поможет опытный яхтенный брокер Андрей Шестаков. На сегодняшний день компания **Shestakov Yacht Sales Inc.** имеет большое количество яхт в собственном списке продаж, а также тесно сотрудничает со всеми крупными яхтенными производителями по всему миру.

Для того чтобы купить яхту **Wild Kingdom — WESTPORT** а также проконсультироваться по любому вопросу связанному с покупкой, продажей, чартером яхт позвоните по телефону **+7(918)465-66-44**.

# ОГЛАВЛЕНИЕ

---

ОГЛАВЛЕНИЕ	2
ХАРАКТЕРИСТИКИ	6
Обзор	6
Основная информация	6
Размеры	6
Скорость, вместимость и масса	6
Размещение	7
Корпус и палуба	7
Информация о двигателе	7
ПОДРОБНОЕ ОПИСАНИЕ	8
Accommodations	8
Aft Deck	8
Salon	9
Dining	9
Galley	10
Dinette	10
Pilothouse	10
Master Stateroom	11
Master Head	11
VIP Stateroom / Forward	11
VIP Head / Forward	12
Mid Guest Foyer	12
Guest Stateroom / Port	12
Guest Head / Port	13
Guest Stateroom /Starboard	13
Guest Head (Starboard)	13
Captains Quarters	14
Crew Staterooms (1 and 2)	14

Crew Head	15
Crew Lounge	15
Lazarette	15
Electronics & Navigation Equipment	15
Electrical	16
Deck	16
Flybridge	16
Mechanical Equipment	17
Tender/Toys	17
Exclusions	18
Исключения	18
Отказ от ответственности	18
<b>ФОТОГРАФИИ</b>	<b>19</b>
Aft Deck	19
Salon	19
Salon	19
Salon	19
Salon	19
Salon	19
Salon	20
Dining	20
Dining	20
Galley	20
Galley	20
Galley	20
Dinette	21
Dinette	21
Dinette	21
Pilothouse	21

---

Pilothouse / Helm	21
Pilothouse / Office	21
Foyer	22
Pilothouse / Settee	22
Master Stateroom	22
Master Stateroom	22
Master Stateroom	23
Master Stateroom	23
Master Head	23
Master Head	23
VIP Stateroom	24
VIP Stateroom	24
VIP Head	24
Guest Stateroom	24
Guest Head	25
Guest Stateroom	25
Guest Head	25
Crew Quarters	25
Crew Quarters	26
Crew Quarters	26
Crew Quarters / Laundry	26
Boat Deck	26
Bow	26
Bow / Keyhole Seating	26
Flybridge	27
Flybridge / Helm	27
Flybridge	27
Flybridge	27
Flybridge / Bar	27

---

---

Flybridge / Seating	27
Flybridge	28
Flybridge	28
Walk-Around Decks	28
Engine Room	28
Engine Room	28
Engine Room	28
Engine Room	29
Aft View	29
GA	29
КОНТАКТЫ	30
Контактная информация	30
Телефоны	30
Время работы	30
Адрес	30

# ХАРАКТЕРИСТИКИ

## Обзор

This 2011 is Hull #42 and has all the latest upgrades to the transom design. **"Wild Kingdom"** features a bigger aft deck, an extra bunk in the crew area, a Passarelle and side boarding gates. The vessel has only 3000 hours and has been currently serviced; she is ready for the winter season. Having had only 3 owners, **"Wild Kingdom"** has been well-maintained and is turn-key ready.

## Основная информация

Тип судна: Моторная яхта	Модельный год: 2011
Год постройки: 2010	Страна: United States
Верх: Hardtop	Открытая палуба мостика: Да

## Размеры

Длина общая: 112' 0" (34.14m)	Ширина: 23' 9" (7.24m)
Макс. осадка: 5' 6" (1.68m)	

## Скорость, вместимость и масса

Крейс. скорость: 18 Kts. (21 MPH)	Макс. скорость: 25 Kts. (29 MPH)
Водоизмещение: 275000 Pounds	Вместимость воды: 1000 Gallons
Вместимость сточного бака: 600 Gallons	Объем топливного бака: 5480 Gallons

## Размещение

---

Всего кают: 4

Спальные места: 8

Всего ком. состава: 7

Каюты экипажа: 3

Койки экипажа: 5

Комм. состав экипажа: 2

## Корпус и палуба

---

Материал корпуса: Fiberglass

Комплектация корпуса: Semi-Displacement

Дизайнер корпуса: Jack Sarin

Дизайнер экстерьера: Westport

## Информация о двигателе

---

Двигатели: 2

Производитель: MTU

Модель: 16V2000

Тип двигателя: Inboard

Тип топлива: Diesel

---

# ПОДРОБНОЕ ОПИСАНИЕ

---

## Accommodations

---

"*Wild Kingdom*" was built with a very experienced owner and delivered in August 2010, (Hull #7742). She has 3,000 hours as of 12/2017, with many custom features, such as:

- (2) ASEA Shore Power Converters
- Teak deck on Aft Deck
- Raised ceiling over the dining table
- U.S. & European outlets installed
- Built-in gasoline tank for tenders (100 gallons)
- Aft Deck boarding gates
- Carbon Fiber boarding ladder
- Headhunter Waste Treatment Plant (MSC Type II – black & gray water)
- Carlisle & Finch Spotlight
- Interior wood is predominately Mahogany
- FLIR Night Vision Camera
- (5) CCTV Cameras throughout (pan/tilt/zoom in engine room and Aft Deck)
- Hydraulic Passarelle (Steelhead)
- Port & Starboard Aft Deck boarding gates with separate Marquipt ladder
- Crestron controls throughout for audio visual and lighting
- Kaleidescape Movie Servers
- LED Lighting throughout for low power consumption and low heat
- Second PTO on second generator
- Rail-mounted life rafts
- Freezer in Lazarette
- Factory installed towing cleats
- Manitowoc commercial icemaker
- Satellite Receivers for all guest and crew areas
- 60-Cycle and 50-Cycle electrical outlets installed in yacht

## Aft Deck

---

- Settee and varnished Teak dining table with inlaid compass rose
- Bar to port with refrigerator and double granite top sink with hot & cold
- (3) Bar stools made by Sutherland (high-gloss)
- Satellite Receiver
- (6) Teak chairs made by Murray (high-gloss)
- Speakers
- Crestron Remote
- Port and starboard boarding gates



- Large waterproof flat screen TV (Runco)
- Port Storage glass holder
- (9) Custom cabinet storage port and starboard
- Teak Aft Deck & Swim Platform

## Salon

---

- Features Hunter Douglas Roman shade valances with Silhouette blinds in custom blind pockets
- Raised buffets port and starboard with Onyx tops and Mahogany cabinets w/raised panel doors
- Salon furniture includes a sofa, loveseat, cocktail table, two end tables, two reclining/swivel chairs, game table with (2) game chairs – All recovered in 2014
- Aft starboard features HDTV 46" flat screen TV
- Salon bar located aft to port with U-Line refrigerator and icemaker, sink with Onyx countertop w/storage
- Chilled wine storage rack in utility room
- B&K Surround sound receiver (AVR 707)
- Surround sound speaker system with powered sub satellite receiver
- Direct TV Satellite receiver (recordable)
- Samsung DVD player
- Handheld Crestron remote
- Marble flooring in port and starboard companionways and aft salon entry
- Aft door has large four-panel polished S/S sliding door with Vertiglide blinds
- Day Head with Headhunter Royal Flush Hydro Vac, mirrored overhead, vanity light, Onyx countertop, floors and wainscoting
- Utility room off port companionway holds Miele washer and dryer and storage under Pilothouse with Sub-
- Zero refrigerator, U-Line wine cooler and (6) custom drawers for storage
- Custom floor runners to protect carpeting
- China and flatware service for eight
- Storage on both sides of Salon, front to back
- Touch pad lighting controls
- 50 & 60 Hertz outlets
- A/C Controls

## Dining

---

- Large Walnut hardwood table
- (8) Upholstered chairs

---

## Galley

---

- Country Kitchen arrangement
- Granite countertops with waterfall edge and backsplash
- Large Island for prep work and storage underneath
- Large pantry storage throughout
- Kohler stainless steel extra deep sink (2)
- Dacor 5-burner touch top cooktop
- Dacor convection oven
- Sub-Zero full-size refrigerator and freezer
- (2) Sub-Zero freezer drawers
- Kitchen Aid dishwasher
- Broan trash compactor
- GE Microwave/vent hood/convection oven
- Franke hot water dispenser
- U-Line icemaker-new 2017
- Runco Plasma TV
- Satellite receiver
- Speakers
- Handheld Crestron remote
- Hunter Douglas blinds
- Amtico wood flooring
- A/C Controls
- Touch pad light controls

---

## Dinette

---

- Granite table with built-in storage
- Upholstered settee and three chairs

---

## Pilothouse

---

- Large wooden helm station wheel
- Ultra-Leather control console with leather dash hoods
- Chart drawers
- (2) Speakers
- Handheld Crestron Remote
- Sliding hatch to Flybridge
- Cabinet with multi-function printer cabinet with full PC for ship's service
- 6" Weems & Plath clock/barometer
- Cabinet doors behind Pilothouse settee in lieu of bookcase-(18) drawers of cabinets
- Crestron Remote TV control dash-mounted

---

## Master Stateroom

---

- Large double door entry
- California King berth with mirrored headboard
- Aromatic cedar-lined walk-in wardrobe with digital Amsec safe
- Runco 42" plasma TV with satellite receiver
- Surround sound speaker system w/powered sub satellite receiver
- Multi-disk DVD/CD player with Handheld Crestron Remote
- (2) Nightstands
- Reading lights
- Sofa port side
- Desk with chair and (4) cabinets
- Hunter Douglas blinds with black-out shades
- Pneumatic (Hydraulic) bed lifts for extra storage with ease
- Built-in dresser with 15 drawers on starboard side
- 50 & 60 Hertz outlets
- Full-length mirror on closet door

---

## Master Head

---

- His and hers layout with central shower with seat
- Shower with double fixtures and Onyx throughout
- Headhunter Royal Flush toilets
- Honey Onyx flooring and counters with waterfall edge
- Jado gold fixtures
- Mirror overhead trimmed out with wood
- (3) Sliding mirrors with port hole behind
- Cabinet and drawer storage
- Touch pad lighting
- 50 & 60 Hertz outlets
- (2) Stools with make-up mirror

---

## VIP Stateroom / Forward

---

- Located forward and down from Galley
- (2) Custom wall storage on port and starboard
- Queen berth on gas spring-lifts to access storage area below
- Walk-in wardrobe, lined with aromatic cedar with Amsec touch pad safe
- Vanity with mirror and (5) drawers with stool
- (8) Drawer dresser starboard side
- Entertainment center and 26" TV – DVD/CD player - (2) Speakers
- LG TV Surround sound receiver with satellite receiver

- Handheld Crestron remote
- Custom storage shelves port and starboard
- (2) Sconce lights
- Mirror forward wall
- A/C Control
- Touch pad light panel switches

---

## VIP Head / Forward

---

- Headhunter Royal Flush Hydro Vac toilet
- Custom shower with glass door
- Sink
- Marble counter with waterfall edge and a bump out radius wood
- Jado gold fixtures
- Granite floor
- Cherry vanity and linen cabinet
- Mirrored medicine cabinet
- 50 & 60 Hertz outlets
- Mirrored overhead

---

## Mid Guest Foyer

---

- Cherry cabinet console with marble top
- Marble flooring with brown accent
- Guest stairs have lift-up section to allow for storage
- 50 & 60 Hertz outlets

---

## Guest Stateroom / Port

---

- Queen berth with drawers underneath for storage
- 3-Drawer nightstand on each side of bed
- (2) Sconce lights
- 6-Drawer built into outboard wall
- 26" TV in entertainment center with 5-drawer dresser below
- Satellite Receiver
- Samsung DVD/CD Player
- Speakers overhead
- Wardrobe lined with cedar
- Handheld Crestron Remote
- 50 & 60 Hertz outlets
- A/C Controls

- (2) Port holes for natural light
- Blinds with black-out shades
- Phone
- Touchpad lighting controls
- Mirrored Headboard and full-length mirror on door

---

## Guest Head / Port

---

- Headhunter Royal Flush Hydro Vac toilet
- Glass shower door
- Jado gold fixtures
- Kohler sink
- Marble countertop
- Cabinet port side
- (4) Cabinet drawer storage
- 50 & 60 Hertz outlets
- Port hole for natural light
- Blind
- Touchpad lights

---

## Guest Stateroom /Starboard

---

- Twin berths with mirrored headboards
- 3-Drawer nightstand with (2) sconce lights
- 26" TV in entertainment center with 5-drawer dresser below
- Satellite Receiver
- Samsung DVD/CD Player
- Speakers overhead
- Wardrobe lined with cedar
- Handheld Crestron Remote
- 50 & 60 Hertz outlets
- Touchpad lighting and A/C controls
- 4-Drawer storage under beds
- Full length mirror on closet door

---

## Guest Head (Starboard)

---

- Headhunter Royal Flush Hydro Vac toilet
- Glass shower door
- Jado gold fixtures
- Kohler sink

- Marble countertop
- Stone floor
- Cabinet starboard side
- 4-Drawer cabinet storage
- Port hole for natural light
- 50 & 60 Hertz outlets
- Blind
- Touchpad lights

---

## Captains Quarters

---

### CABIN

- Full-size berth with innerspring pillow-top mattress and drawer storage below
- Aft Depth Sounder
- TV 15"
- Satellite Receiver
- Radio/CD/DVD Player
- Speakers
- Handheld Crestron Remote
- Aromatic cedar-lined wardrobe and safe
- (23) Cabinets with drawers
- Desk with chair
- Phone with intercom
- Remote light switch
- A/C Control
- 50 & 60 Hertz outlets
- Port hole

### Head:

- Galley Maid toilet
- Custom shower with tempered glass doors
- Grohe fixtures
- Kohler sink
- Vanity Corian counters
- Pergo flooring – Teak with Holly
- Large cabinet storage
- Mirrored medicine cabinet

---

## Crew Staterooms (1 and 2)

---

- Twin berths with innerspring pillow-top mattresses

- 15" LCD TV
- Radio/CD/DVD player
- Satellite TV receiver
- Aromatic cedar-lined wardrobe
- Cabinets with drawers

---

## Crew Head

---

- Galley Maid toilet
- Sink
- Shower
- Grohe fixtures
- Pergo Teak with Holly flooring
- Mirrored medicine cabinet
- Port hole

---

## Crew Lounge

---

- Upper and lower cabinets
- Corian countertops
- Upholstered settee with table
- Built-in refrigerator
- Microwave
- Stainless sink
- TV 20" LCD, Satellite receiver, Radio/CD/DVD Player
- Speakers
- Handheld Crestron Remote
- Miele washer and dryer

---

## Lazarette

---

- Commercial Manitowoc icemaker
- Large upright GE freezer
- (2) Battery back-ups
- A/C with light controls

---

## Electronics & Navigation Equipment

---

- Simrad AP50 Autopilot System in Pilothouse and Flybridge
- Furuno GPS GP-150D in Pilothouse and Flybridge

- (2) Furuno FR-2117 X-Band Radar, 19" NEC LCD Display and Repeater on Flybridge (15")
- Furuno FCV-1200L color LCD Sounder with 15" display; Brooks & Gatehouse HS3000
- Elbex CCTV System with 5-color cameras (Engine Room and Aft Deck are pan/tilt/zoom)
- (2) ICOM IC-M604 VHF
- ICOM M802 SSB
- Furuno PG-1000 Gyro Compass
- B & G Depth sounder in Captain's cabin
- FLIR Night Vision
- SEATEL Satellite TV System
- Mini-M Satellite telephone
- Panasonic 16-station Telephone System
- (3) Independent Navigation Computers: Transas Navigation/Electronic Chart System (displayed on 19" NEC screen)
- (2) Hailer hHrns integrated with VHF Hailers
- Northern Airborne E.P.I.R.B.
- I.D.E.A. Electronic Log and Accounting System (\$40k 2016)

## Electrical

---

- (2) ASEA Shore Power Converters (36 KVA ea.)
- All LED Lighting throughout
- Vessel Information Control System: Displayed on 15" LCD monitor in Pilothouse and 3" LCD Panel view touch pad at starboard entry and Crew Galley/Lounge
- All AGM Cell type batteries
- (3) King heater/defrosters on Pilothouse console
- (2) 100 Amp Glendenning Cablemaster (each cable is 100') – (2) 100 amp on bow as well
- Main distribution Panel in Crew area – 50 & 60 Hertz
- US & European outlets installed in the yacht (10 KVA frequency converters)

## Deck

---

- (2) Poole-style galvanized anchors, 300lbs. ea.
- 5/8" Chain (250' and 350')
- (2) Maxwell 4500# Windlasses
- (2) Maxwell 3500# Capstans on Aft Deck
- Forward seating area and sun pad on bow
- Tide Ride ladder stored starboard on main deck forward
- Built-in 100 gallon gas tank for tenders (Pneumatic fuel pump)
- (4) Underwater lights

## Flybridge

---



- Second Helm station with repeater controls and (2) Nauticomp screens
- 2500lb. Steelhead Hydraulic Davit with rotation and extendable boom
- (2) 8-Man Life rafts, rail-mounted outboard of Boat Deck
- (2) Helm chairs with covers
- 24" Stainless steel Destroyer type wheel
- Granite wet bar features sink with hot/cold water, Perlick refrigerator drawers, Gaggenau grill and (4) bar stools
- (2) Pairs of speakers
- Handheld Waterproof Crestron Remote
- Molded settees to starboard with (2) oval fixed tables
- Hot Tub with sun pad and storage below with custom umbrella
- Large sun pads on lower deck area
- Factory Hardtop
- Covers for all chairs, tables, countertops and helm

## Mechanical Equipment

---

- Twin MTU/DDC 16V2000 engines @ 2,000 hp, 3,000 hours 12/17 – 66,379 port, 64,571 starboard (total fuel burned)
- (2) Northern Lights Generators 65kW 1800 RPM (5,770 hrs.) 12/17
- American 16" 40 Hp Bow Thruster Hydraulic single prop with r-station controls
- Air conditioning features a 24-ton Chilled Water System – (4) new chillers 2016/2017
- FM200 Fire Suppression System in Engine Room with manual automatic controls
- Compressed Air System for horn, gas pump and air-powered tools
- Clean and used oil tanks (60 gallons ea.) with oil change system
- Aquamet 22 HS shafts (4")
- Naiad Stabilizers #60 with 12 sq. ft. fins
- Exalto windshield wipers with electronic control panel, synchronization and washers for (3) wipers
- Jastram Power Steering
- All bronze thru-hulls
- Remote mounted bilge pump pick-ups
- Emergency sized bilge pump system
- Plumbing: (2) Sea Recover watermakers; (2) Aqua-Pure water filters; 80-Gallon hot water heater (New 2017), 38-Gallon hot water heater (New 2015)
- Headhunter MSD Treatment System for black and gray water (Just serviced 2017)

## Tender/Toys

---

- (2) Jet Skis – Kawasaki (2014)

---

## Exclusions

---

"*Wild Kingdom*" is a registered name and does not convey. All owners' and crews personal items. A detailed list will be provided at time of sale, upon written request.

---

## Исключения

---

При продаже яхты исключаются личные вещи владельца.

---

## Отказ от ответственности

---

Компания предоставляет описание судна или яхты добросовестно, но не может гарантировать точность этой информации, а также не ручается за техническое состояние. Покупатель должен проинструктировать своих агентов или оценщиков исследовать представленную информацию более подробно, по собственному желанию. Продажа судна или яхты, изменение цены или снятие с продажи будет происходить без предварительного уведомления.

# ФОТОГРАФИИ

**Aft Deck**



**Salon**



**Salon**



**Salon**



**Salon**



**Salon**



Salon



Dining



Dining



Galley



Galley



Galley



**Dinette**



**Dinette**



**Dinette**



**Pilothouse**



**Pilothouse / Helm**



**Pilothouse / Office**



**Pilothouse / Settee**



**Foyer**



**Master Stateroom**



**Master Stateroom**



**Master Stateroom**



**Master Stateroom**



**Master Head**



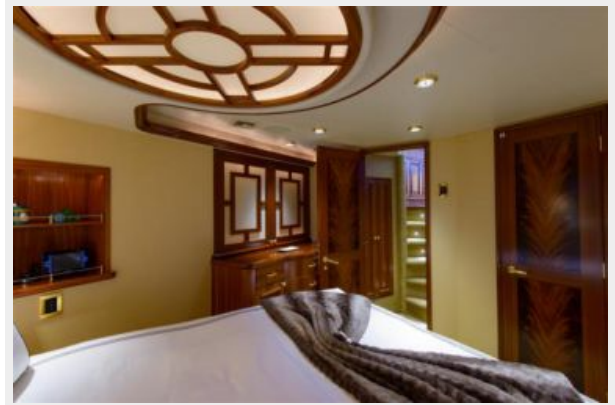
**Master Head**



**VIP Stateroom**



**VIP Stateroom**



**VIP Head**



**Guest Stateroom**





**Guest Head**



**Guest Stateroom**



**Guest Head**



**Crew Quarters**



**Crew Quarters**



**Crew Quarters**



**Crew Quarters / Laundry**



**Boat Deck**



**Bow**



**Bow / Keyhole Seating**



**Flybridge**



**Flybridge / Helm**



**Flybridge**



**Flybridge**



**Flybridge / Bar**



**Flybridge / Seating**



**Flybridge**



**Flybridge**



**Walk-Around Decks**



**Engine Room**



**Engine Room**



**Engine Room**



**Engine Room**



**Aft View**



**GA**



# КОНТАКТЫ

---

Андрей Шестаков (Andrey Shestakov) – ведущий яхтенный брокер отдела продаж яхт и судов компании Shestakov Yacht Sales Inc. Официальный представитель Shestakov Yacht Sales Inc. для русскоговорящих клиентов в центральном офисе компании в Майами/Форт Лодердейл/Флорида/США.

## Контактная информация

---

Email: [andrey@shestakovyachtsales.com](mailto:andrey@shestakovyachtsales.com)

Web: [shestakovyachtsales.com](http://shestakovyachtsales.com)

## Телефоны

---

Краснодарский край: **+7(918)465-66-44**

США, Майами, Флорида: **+1(954)274-4435**

## Время работы

---

Понедельник – Суббота: **9:00 - 21:00**  
EDT

Воскресенье: **Закрыто**

## Адрес

---



Harbour Towne Marina, 850 NE 3rd St,  
STE 213, Dania, FL 33004