

## NO NAME — COMPTON MARINE



**Builder:** COMPTON MARINE

**Year Built:** 2006

**Model:** Cruising Yacht

**Price:** PRICE ON APPLICATION

**LOA:** 33' (10.06m)

**Beam:** 13.08

**Min Draft:** 3' 7" (1.09m)

**Cruise Speed:** 24 Knots Kts. (28 MPH)

Our experienced yacht broker, Andrey Shestakov, will help you choose and buy a yacht that best suits your needs **No Name — COMPTON MARINE** from our catalogue. Presently, at **Shestakov Yacht Sales Inc.**, we have a wide variety of yachts available on our sale's list. We also work in close contact with all the big **yacht manufacturers** from all over the world.

If you would like to buy a yacht **No Name — COMPTON MARINE** or would like help answering any questions concerning purchasing, selling or chartering a yacht, please call **+1(954)274-4435**

# TABLE OF CONTENTS

---

TABLE OF CONTENTS	2
SPECIFICATIONS	4
Overview	4
Basic Information	4
Dimensions	4
Speed, Capacities and Weight	4
Accommodations	4
Hull and Deck Information	5
Engine Information	5
PHOTOS	6
Starboard profile	6
Bow profile	6
Aft view	6
View aft from forward deck	6
Forward windlass & bow pulpit	6
Starboard deck view forward	7
Forward deck view to port	7
Salon view aft	7
Cockpit salon access	7
aft swimplatform	7
Aft bench settee	7
Aft transom door & 30 amp connection	8
Forward Master Stateroom	8
Forward Master stateroom queen berth	8
Forward master stateroom settee	8
Master stateroom hanging lockers & stereo	8
Full walk in shower to starboard	8
Guest stateroom to starboard	9

Ensuite head to port 2.	9
Ensuite head & sink to port	9
Moveable helm chair	9
Helm view 2.	9
Main salon with teak & holly sole	9
Galley up to starboard	10
Galley up view to starboard	10
Crew seat conversion to tabletop	10
Extended counter top	10
Helm view aft	10
View aft from forward stateroom	10
L shaped settee to port 2.	11
L shaped settee to port	11
Aft cockpit underneath storage	11
starboard shaft	11
Port shaft	11
Water heater	11
Aft steerage and generator	12
Topview 5 KW Generator	12
Starboard cummings diesel	12
Port cummings diesel	12
Mercury Inflatable hard bottom tender	12
IMG_1075	12
CONTACTS	13
Contact details	13
Telephones	13
Office hours	13
Address	13

---

# SPECIFICATIONS

---

## Overview

---

The Compton 33 is on the leading edge of elegance, practicality and one of the nicest downeast style cruiser's you will find. Yacht designer Terrence Compton designed this boat with every attention to detail and performance. Only 19 of these highly sought after vessels were ever built. If your looking for a boat to do the great loop or extended cruising this vessel offers every comfort along with the ability to cruise at a much better pace than any trawler. She has twin molded skegs to protect her running gear and her ability to cruise at 24 knots really sets her apart from many other vessels. Her cockpit deck under storage has the largest storage area of any boat in her class. This Compton 33 is competitively priced and will not be available for long.

## Basic Information

---

**Category:** Cruising Yacht

**Model Year:** 2006

**Year Built:** 2006

## Dimensions

---

**LOA:** 33' (10.06mm)

**LWL:** 29' (8.84mm)

**Beam:** 13.08

**Min Draft:** 3' 7" (1.09mm)

## Speed, Capacities and Weight

---

**Cruise Speed:** 24 Knots Kts. (28 MPH) **Water Capacity:** 80 Gallons

**Holding Tank:** 35 Gal Gallons

**Fuel Capacity:** 355 Gal Gallons

## Accommodations

---

**Total Cabins:** 3

**Total Berths:** 4

**Total Heads:** 1

---

## Hull and Deck Information

---

**Hull Material:** Fiberglass

**Hull Configuration:** Modified V-Hull

---

## Engine Information

---

**Engines:** 2

**Manufacturer:** Cummins

**Engine Type:** Inboard

**Fuel Type:** Diesel

# PHOTOS

**Starboard profile**



**Bow profile**



**Aft view**



**View aft from forward deck**



**Forward windlass & bow pulpit**



**Starboard deck view forward**



**Forward deck view to port**



**Salon view aft**



**Cockpit salon access**



**aft swimplatform**



**Aft bench settee**



**Aft transom door & 30 amp connection**



**Forward Master Stateroom**



**Forward Master stateroom queen berth**



**Forward master stateroom settee**



**Master stateroom hanging lockers & stereo**



**Full walk in shower to starboard**





**Guest stateroom to starboard**



**Ensuite head to port 2.**



**Ensuite head & sink to port**



**Moveable helm chair**



**Helm view 2.**



**Main salon with teak & holly sole**



**Galley up to starboard**



**Galley up view to starboard**



**Crew seat conversion to tabletop**



**Extended counter top**



**Helm view aft**



**View aft from forward stateroom**



**L shaped settee to port 2.**



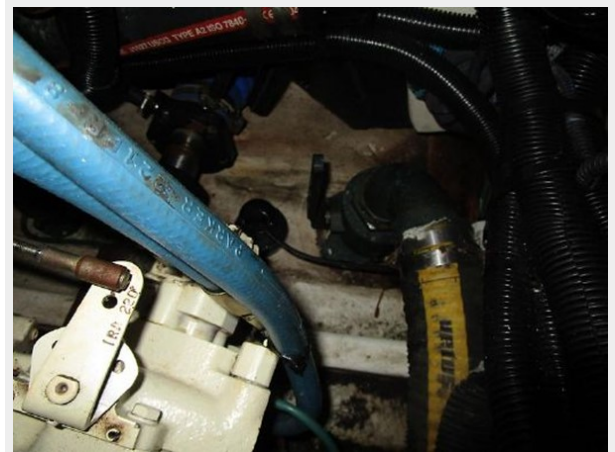
**L shaped settee to port**



**Aft cockpit underneath storage**



**starboard shaft**



**Port shaft**



**Water heater**



**Aft steerage and generator**



**Topview 5 KW Generator**



**Starboard cummings diesel**



**Port cummings diesel**



**IMG\_1075**



**Mercury Inflatable hard bottom tender**



# CONTACTS

---

Andrey Shestakov, leading yacht broker of the sales department of Shestakov Yacht Sales Inc. Shestakov Yacht Sales Inc., the official representative of the Miami/Fort Lauderdale FL headquarters.

## Contact details

---

Email: **andrey@shestakovyachtsales.com**

Web: [shestakovyachtsales.com/en/](http://shestakovyachtsales.com/en/)

## Telephones

---

USA: **+1(954)274-4435**

## Office hours

---

Monday – Saturday: **9:00 - 21:00** EDT

Sunday: **closed**

## Address

---



Harbour Towne Marina, 850 NE 3rd St, STE 213, Dania, FL 33004