

52FT 1992 HANS CHRISTIAN CHRISTINA 52 — HANS CHRISTIAN YACHTS



Builder: HANS CHRISTIAN YACHTS

Year Built: 1992

Model: Cruising Sailboat

Price: PRICE ON APPLICATION

Location: United States

LOA: 52' 0" (15.85m)

Beam: 14' 0" (4.27m)

Max Draft: 7' 10" (2.39m)

Our experienced yacht broker, Andrey Shestakov, will help you choose and buy a yacht that best suits your needs 52ft 1992 Hans Christian Christina 52 — HANS CHRISTIAN YACHTS from our catalogue. Presently, at Shestakov Yacht Sales Inc., we have a wide variety of yachts available on our sale's list. We also work in close contact with all the big yacht manufacturers from all over the world.

If you would like to buy a yacht 52ft 1992 Hans Christian Christina 52 — HANS CHRISTIAN YACHTS or would like help answering any questions concerning purchasing, selling or chartering a yacht, please call **+1(954)274-4435**

TABLE OF CONTENTS

TABLE OF CONTENTS	2
SPECIFICATIONS	4
Overview	4
Basic Information	4
Dimensions	5
Speed, Capacities and Weight	5
Accommodations	5
Hull and Deck Information	5
Engine Information	5
DETAILED INFORMATION	6
DIMENSIONS	6
VESSEL WALK THROUGH	6
ACCOMODATIONS	7
SALON and GALLEY	8
ELECTRICAL and ELECTRONICS	9
Mechanical	10
Hull and Deck	11
Sails and Rigging	12
Additional Equipment	12
Exclusions	13
Comments	13
Exclusions	13
Disclaimer	14
PHOTOS	15
CONTACTS	22
Contact details	22
Telephones	22
Office hours	22

Address

22

SPECIFICATIONS

Overview

Hans Christian quality – Modern designed performance cruiser – True BLUE WATER - YACHT

3 staterooms – 2 heads w/ large master cabin aft

Quality interior joinery and woodwork – Spacious Salon with seating for 6-8 round her beautiful dinette table.

Large Galley with loads of counter top work area, and lots of storage -electric stove and oven

Well laid out interior with lots of light and opening hatches for ventilation

Fully Air Conditioned

Easily handled from the Center Cockpit – with upgraded electronics

Lots of deck space and easy access fore and aft – swim platform with molded steps down from aft deck

This is not the traditional Hans Christian full keeled sailboat – She was designed by Doug Peterson to be a fast performance cruising yacht. She has a modern hull design with fin keel and skeg hung rudder. Her center cockpit design allows for exceptional on-deck space and easy access fore and aft. This design also allows for a huge master suite- Aft and Guest VIP forward – both cabins are en-suite with private head and shower. There is also a third guest cabin/captain's cabin amidships.

This is the ideal vessel for the experienced sailor looking for a quality Blue Water vessel or anyone looking for a spacious and comfortable live-aboard vessel.

Call listing agent for more information or to view this quality vessel.

Basic Information

Category: Cruising Sailboat

Model Year: 1992

Year Built: 1992

Country: United States

Dimensions

LOA: 52' 0" (15.85m)

LWL: 41' 7" (12.67m)

Beam: 14' 0" (4.27m)

Max Draft: 7' 10" (2.39m)

Clearance: 67' 0" (20.42m)

Speed, Capacities and Weight

Displacement: 53000 Pounds

Accommodations

Total Cabins: 3

Total Berths: 3

Total Heads: 2

Hull and Deck Information

Hull Material: Fiberglass

Engine Information

Engines: 1

Manufacturer: Yanmar

Model: 4JH2DTE

Engine Type: Inboard

Fuel Type: Diesel

DETAILED INFORMATION

DIMENSIONS

Doug Peterson Design

Length 52 ft. 15.85 meters

Beam 14 ft. 4.26 meters

Draft 7 ft. 10 in 2.38 meters

LWL 41 ft. 7 in 12.68 meters

Bridge Clearance 67 ft. 20.42 meters

Displacement 53,000 lb 24,040 kilo

Ballast 19,100 lb 8,664 kilo

Engine Yanmar 4JH2DTE 88 HP (1130 hrs.-Original)

Generator Northern Lights 8.5 kw (300 hrs.)

Tankage: Fuel 100gal 379 liters

Water 150 gal 568 liters

Holding 35 gal (x 2) 132 liters (x2)

VESSEL WALK THROUGH

Comfortable Center Cockpit design with lots of deck space.

Forward is the guest VIP cabin with Private access to the forward head and shower, (to Starbd). This head also serves as the Day Head

Moving aft is the Main Salon, with a very spacious feel. A Curved Dinette seating 6-8 is to Starbd, and a straight Settee is to Port. Aft of the Settee to Port is the full Nav station, followed by the private captain/guest cabin.

The companionway stairs and engine room are centered at the aft end of the Salon, and the Galley occupies the walkthrough leading aft to the Master Stateroom. Galley is along the Starbd side of the vessel, and contains lots of storage space. Engine and Generator access is from the galley and from the Midships cabin on the Port side.

The Master Suite occupies the aft portion of the vessel, and has a private head with shower.

Interior is fully air conditioned with reverse cycle heat.

Teak & Holly sole

Teak Bulkheads

Marble counter tops

ACCOMODATIONS

3 Cabins, 2 Heads

Forward Cabin:

Private forward cabin with double berth

Private access to Forward Head and shower

Storage under berth (pull out drawers), side storage cabinets, hanging locker

Large opening overhead hatch

Midship cabin: (Captain or guest cabin)

Currently single berth, upper berth removed for more space

Storage cabinets

(2) OPENING PORTS (opens to cockpit)

Master Cabin Aft:

Large master cabin aft with centerline double berth -

Private head with shower (separate circular shower stall)

Storage lockers and hanging lockers

Large opening overhead hatch

Emergency tiller (foam cutout in mattress for tiller to be mounted to steering post)

FORWARD HEAD:

Manual head (can be converted to electric – wiring in place)

Shower with overboard discharge for gray water

Tiled and wood grate floor

SS sink

AFT HEAD:

Large head w/ separate stall shower – Teak grate in shower

Manual toilet

SS sink

Marble counter top

(2) 35 gal holding tanks w/ deck pump out and overboard discharge

SALON and GALLEY

SALON: Salon, is full Beam and offers a bright and spacious feel. Numerous windows on all sides provide light and add to the open feeling. Overhead hatches offer additional light and ventilation. A large dinette occupies the Starbd side of the Salon, which includes a beautiful wood dining table that accommodates 6, and a straight Settee is to Port.

Large windows offer light and (3) overhead hatches provide ventilation.

The Nav station, aft of the Port Settee, offers a full Work Station, and complete instruments as well as the AC and DC electric panels

There are numerous hand holds and overhead rail for safety

Lots of storage in side lockers, and under the seating areas

New Ultra Suede headliner with removable panels

Fabric Bench Settee, and Dinette

NAV STATION: - Aft of the Port Settee is the Nav Station, with pull out seat and wrap around desk

AC and DC electric panels

Electronic instruments

GALLEY: A complete working galley is located along the walkthrough to the aft cabin. The galley has 1 inch thick marble counters and all necessary equipment to please any chef. Counters are located both on the outboard side of the Galley, and also inboard above the engine room.

New 12 v systems for refrigerator and separate 12v freezer – Dometic/Adler Barbour

Princess (3) burner electric cooktop and oven

Hand operated salt and fresh water pumps at sink

(2) Opening ports for light and ventilation

Engine and generator access panels

Double Stainless-Steel Sink

Trash bin, storage lockers and drawers

Fiberglass Fresh Water tanks -total 150-gal capacity (below Salon floor)

ELECTRICAL and ELECTRONICS

ELECTRICAL:

This vessel was built for the US market with 110v electric system for AC needs, and 12v for DC needs

Dual 30-amp shore power cords

Generator – Northern Lights 8.5 kw

Mariner battery charger – Promarine 50 Amp (rebuilt Aug 2017)

Victron Energy monitor

Inverter – Power Bright 900 w (new)

Main electric panel – w/ circuit breakers, Volt meter, amp meter, polarity indicator

(4) new 4D AGM batteries (secured in Starbd Settee)

New Hela LED spreader lights

New Tri Color Nav light

ELECTRONICS:

EPIRB- Macmurdo 406

Radar - Raymarine R20XX

GPS/Chart Plotter – Raymarine Axium - NEW

Autopilot -Autohelm ST-7000

Single sideband radio -SEA 222

Ritchie compass

Wind – Raymarine ST-60 - NEW

Depth Finder – Raymarine ST-60

Speed – Raymarine ST-60

Depth/wind/heading - Autohelm

(2) VHF radios – B&G VHF and (1) Cobra Hand held

JVC Stereo w/ (12) disc changer – (8) speakers and 1600 w Amplifier

NAXA flat screen TV – Salon

Magnavox DVD Player

Tank tender gage

Windex – wind indicator (new)

Mechanical

Engine Yanmar 4JH2 88 HP (1130 hrs.-Original)

With NEW Turbo Charger and starter

New transmission seals

(2) blade MAXI feathering prop

Racor fuel filter/water separator – secondary fuel filter on engine

Generator Northern Lights 7.5 kw (300 hrs.)

Maxwell 2200 electric windlass 12 v with deck foot buttons

CQR 45 lb. anchor and chain rode

Danforth anchor w/chain and rode

(2) Lunaire 16,000 BTU Reverse cycle air conditioning

(2) holding tanks

20-gal water heater

(3) Fiberglass fuel tanks – 100-gal total in 3 tanks

JabscoPar Max 4 electric bilge pump (2) float switches

Whale manual bilge pump (in cockpit)

Hull and Deck

Comfortable Center Cockpit design makes this vessel an ideal cruising yacht. She also has aft stairs molded into the hull for easy access to her swim platform. Her modified fin keel adds to the performance and good pointing ability of the vessel, and she has a skeg hung rudder for safety. Deck is fiberglass laminate with teak overlay (teak is worn in some areas – but appears serviceable)

Dodger with SS grabrails

Screens for hatches

Cockpit cushions

10 fixed ports – replaced and rebedded

(8) SS cleats

Bow pulpit – SS

Stern Pulpit – SS w/ teak grate seats in corners

(2) side boarding gates, (1) aft boarding gate

SS radar and wind generator masts

VENTILATION:

(4) Dorade vents

(8) Opening hatches w/screens

(6) opening opening ports

Companionway hatch

(5) 12v fans, (2) 110v fans

Sails and Rigging

Vessel was designed and rigged for fast cruising, and easy to handle sail plan. She is Sloop rigged, with Forward Roller furling Genoa, Inner forestay for a storm sail, and conventional – full battened main

Aluminum keel stepped mast – mast is stepped on stringer system and is above the bilge

Stainless Steel rod rigging

Removable inner forestay

Running backstays

Harken roller furling Genoa

Harken Bat-cars for the main

Hydraulic backstay adjuster

Hydraulic boom vang – Navtec

Adjustable traveler

Adjustable jib tracks

Winches: = (2) Lewmar #66 self-tailing primary in cockpit

(2) Lewmar # 52 self-tailing secondary winches

(1) Lewmar #48 ELECTRIC halyard winch *on cabin top, behind dodger*

(1) Lewmar #48 self-tailing 2 speed winch *on cabin top, behind dodger*

(1) self-tailing main sheet winch in cockpit

Main sail - fully battened – w/ Dutchman system and cover

135% Genoa

Additional Equipment

Kidde ABC dry chemical fire extinguishers

PFD's

Throwable ring buoy

Man overboard pole

Jack lines

SS propane Bar B Que grill

Fresh- water shower at transom steps

Exclusions

Owner's personal effects

Tender and outboard - optional

paddle boards

Comments

Commissioned by Doug Peterson to design a comfortable fast cruising boat, Hans Christian built the

HC-52 to maximize interior space, and to be a sleek performance "BLUE WATER" cruiser. She has 6 ft. 4 in headroom inside, and the highest quality woodwork and joinery you will find on any comparable sailing yacht. She was designed with 2 en-suite cabins, and a third guest or crew cabin.

Her Center Cockpit design allows for maximum use of the deck space, including wide aft deck with (2) built in forward facing seats in the aft pushpit, and room for deck chairs on the spacious aft deck. There are wide side decks for easy movement fore and aft, and a large foredeck for anchor or line handling.

This design also allows for a voluminous interior with nice separation between the Master cabin aft and forward guest cabin. It also affords maximum privacy in the aft cabin as it is separated from Salon by the Galley and passageway aft.

This vessel has been lightly used as evidenced by the low engine and generator hours.

She is a true BLUE WATER vessel and was designed to be a fast and secure passage-maker. Her hull form was also designed for maximum performance from a cruising yacht.

Exclusions

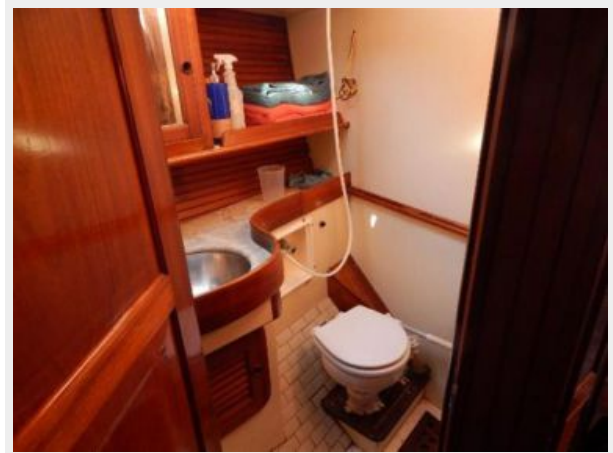
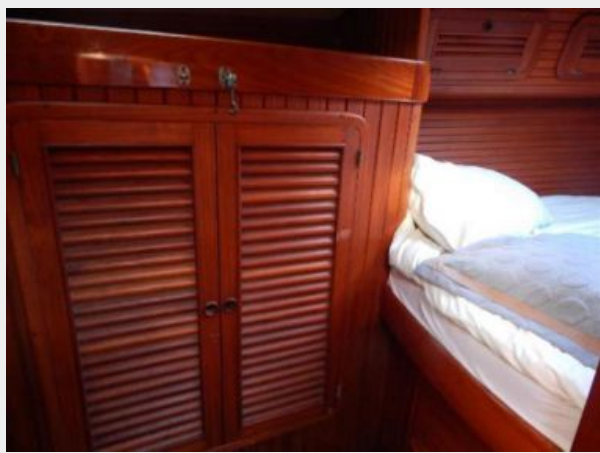
Owner's personal belongings.

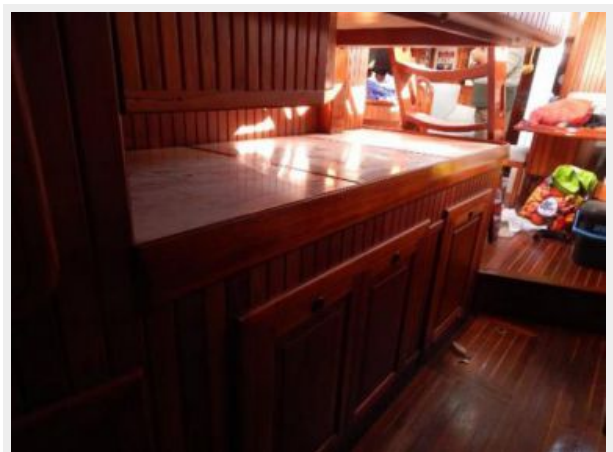
Disclaimer

The Company offers the details of this vessel or yacht in good faith but cannot guarantee or warrant the accuracy of this information nor warrant the condition of the vessel. A buyer should instruct his representatives, agents, or his surveyors, to investigate such details as the buyer desires validated. This vessel or yacht is offered subject to prior sale, price change, or withdrawal without notice.

PHOTOS

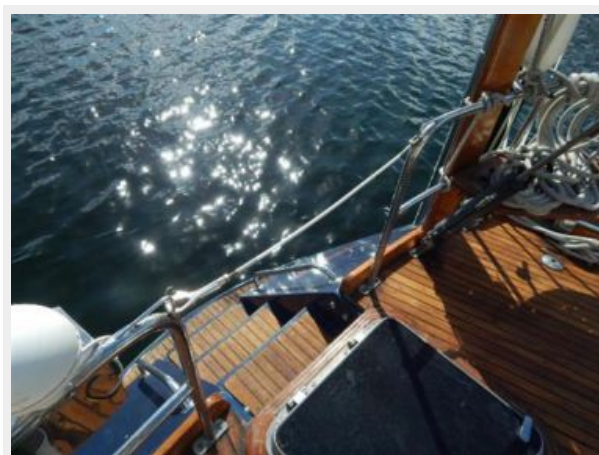














CONTACTS

Andrey Shestakov, leading yacht broker of the sales department of Shestakov Yacht Sales Inc. Shestakov Yacht Sales Inc., the official representative of the Miami/Fort Lauderdale FL headquarters.

Contact details

Email: andrey@shestakovyachtsales.com

Web: shestakovyachtsales.com/en/

Telephones

USA: +1(954)274-4435

Office hours

Monday – Saturday: **9:00 - 21:00** EDT

Sunday: **closed**

Address



Harbour Towne Marina, 850 NE 3rd St,
STE 213, Dania, FL 33004