

# 52FT 1992 HANS CHRISTIAN CHRISTINA 52 — HANS CHRISTIAN YACHTS



**Судостроитель:**  
HANS CHRISTIAN YACHTS

**Год постройки:** 1992

**Модель:** Крейсерская яхта

**Цена:** ЦЕНА ЯХТЫ ПО ЗАПРОСУ

**Местонахождение:** United States

**Длина общая:** 52' 0" (15.85m)

**Ширина:** 14' 0" (4.27m)

**Макс. осадка:** 7' 10" (2.39m)

Купить 52ft 1992 Hans Christian Christina 52 — HANS CHRISTIAN YACHTS а также выбрать подходящую вам яхту из нашего каталога яхт вам поможет опытный яхтенный брокер Андрей Шестаков. На сегодняшний день компания Shestakov Yacht Sales Inc. имеет большое количество яхт в собственном списке продаж, а также тесно сотрудничает со всеми крупными яхтенными производителями по всему миру.

Для того чтобы купить яхту 52ft 1992 Hans Christian Christina 52 — HANS CHRISTIAN YACHTS а также проконсультироваться по любому вопросу связанному с покупкой, продажей, чартером яхт позвоните по телефону **+7(918)465-66-44**.

# ОГЛАВЛЕНИЕ

---

ОГЛАВЛЕНИЕ	2
ХАРАКТЕРИСТИКИ	4
Обзор	4
Основная информация	4
Размеры	5
Скорость, вместимость и масса	5
Размещение	5
Корпус и палуба	5
Информация о двигателе	5
ПОДРОБНОЕ ОПИСАНИЕ	6
DIMENSIONS	6
VESSEL WALK THROUGH	6
ACCOMODATIONS	7
SALON and GALLEY	8
ELECTRICAL and ELECTRONICS	9
Mechanical	10
Hull and Deck	11
Sails and Rigging	12
Additional Equipment	12
Exclusions	13
Comments	13
Исключения	13
Отказ от ответственности	14
ФОТОГРАФИИ	15
КОНТАКТЫ	22
Контактная информация	22
Телефоны	22
Время работы	22

---

Адрес

22

---

# ХАРАКТЕРИСТИКИ

---

## Обзор

---

Hans Christian quality – Modern designed performance cruiser – True BLUE WATER - YACHT

3 staterooms – 2 heads w/ large master cabin aft

Quality interior joinery and woodwork – Spacious Salon with seating for 6-8 round her beautiful dinette table.

Large Galley with loads of counter top work area, and lots of storage -electric stove and oven

Well laid out interior with lots of light and opening hatches for ventilation

Fully Air Conditioned

Easily handled from the Center Cockpit – with upgraded electronics

Lots of deck space and easy access fore and aft – swim platform with molded steps down from aft deck

This is not the traditional Hans Christian full keeled sailboat – She was designed by Doug Peterson to be a fast performance cruising yacht. She has a modern hull design with fin keel and skeg hung rudder. Her center cockpit design allows for exceptional on-deck space and easy access fore and aft. This design also allows for a huge master suite- Aft and Guest VIP forward – both cabins are en-suite with private head and shower. There is also a third guest cabin/captain's cabin amidships.

This is the ideal vessel for the experienced sailor looking for a quality Blue Water vessel or anyone looking for a spacious and comfortable live-aboard vessel.

Call listing agent for more information or to view this quality vessel.

---

## Основная информация

---

**Тип судна:** Крейсерская яхта

**Модельный год:** 1992

**Год постройки:** 1992

**Страна:** United States

## Размеры

---

**Длина общая:** 52' 0" (15.85m)

**Длина по ватерлинии:** 41' 7" (12.67m)

**Ширина:** 14' 0" (4.27m)

**Макс. осадка:** 7' 10" (2.39m)

**Трапы:** 67' 0" (20.42m)

## Скорость, вместимость и масса

---

**Водоизмещение:** 53000 Pounds

## Размещение

---

**Всего кают:** 3

**Всего коек:** 3

**Всего ком. состава:** 2

## Корпус и палуба

---

**Материал корпуса:** Fiberglass

## Информация о двигателе

---

**Двигатели:** 1

**Производитель:** Yanmar

**Модель:** 4JH2DTE

**Тип двигателя:** Inboard

**Тип топлива:** Diesel

# ПОДРОБНОЕ ОПИСАНИЕ

## DIMENSIONS

Doug Peterson Design

Length 52 ft. 15.85 meters

Beam 14 ft. 4.26 meters

Draft 7 ft. 10 in 2.38 meters

LWL 41 ft. 7 in 12.68 meters

Bridge Clearance 67 ft. 20.42 meters

Displacement 53,000 lb 24,040 kilo

Ballast 19,100 lb 8,664 kilo

Engine Yanmar 4JH2DTE 88 HP ( 1130 hrs.-Original)

Generator Northern Lights 8.5 kw ( 300 hrs.)

Tankage: Fuel 100gal 379 liters

Water 150 gal 568 liters

Holding 35 gal (x 2) 132 liters ( x2)

## VESSEL WALK THROUGH

Comfortable Center Cockpit design with lots of deck space.

Forward is the guest VIP cabin with Private access to the forward head and shower, ( to Starbd). This head also serves as the Day Head

Moving aft is the Main Salon, with a very spacious feel. A Curved Dinette seating 6-8 is to Starbd, and a straight Settee is to Port. Aft of the Settee to Port is the full Nav station, followed by the private captain/guest cabin.

The companionway stairs and engine room are centered at the aft end of the Salon, and the Galley occupies the walkthrough leading aft to the Master Stateroom. Galley is along the Starbd side of the vessel, and contains lots of storage space. Engine and Generator access is from the galley and from the Midships cabin on the Port side.

The Master Suite occupies the aft portion of the vessel, and has a private head with shower.

Interior is fully air conditioned with reverse cycle heat.

Teak & Holly sole

Teak Bulkheads

Marble counter tops

## ACCOMODATIONS

---

3 Cabins, 2 Heads

Forward Cabin:

Private forward cabin with double berth

Private access to Forward Head and shower

Storage under berth ( pull out drawers), side storage cabinets, hanging locker

Large opening overhead hatch

Midship cabin: ( Captain or guest cabin)

Currently single berth, upper berth removed for more space

Storage cabinets

(2) OPENING PORTS ( opens to cockpit)

Master Cabin Aft:

Large master cabin aft with centerline double berth -

Private head with shower ( separate circular shower stall)

Storage lockers and hanging lockers

Large opening overhead hatch

Emergency tiller ( foam cutout in mattress for tiller to be mounted to steering post)

FORWARD HEAD:

Manual head ( can be converted to electric – wiring in place)

Shower with overboard discharge for gray water

Tiled and wood grate floor

SS sink

AFT HEAD:

Large head w/ separate stall shower – Teak grate in shower

Manual toilet

SS sink

Marble counter top

(2) 35 gal holding tanks w/ deck pump out and overboard discharge

---

## **SALON and GALLEY**

---

**SALON:** Salon, is full Beam and offers a bright and spacious feel. Numerous windows on all sides provide light and add to the open feeling. Overhead hatches offer additional light and ventilation. A large dinette occupies the Starbd side of the Salon, which includes a beautiful wood dining table that accommodates 6, and a straight Settee is to Port.

Large windows offer light and (3) overhead hatches provide ventilation.

The Nav station, aft of the Port Settee, offers a full Work Station, and complete instruments as well as the AC and DC electric panels

There are numerous hand holds and overhead rail for safety

Lots of storage in side lockers, and under the seating areas

New Ultra Suede headliner with removable panels

Fabric Bench Settee, and Dinette

**NAV STATION:** - Aft of the Port Settee is the Nav Station, with pull out seat and wrap around desk

AC and DC electric panels

Electronic instruments

**GALLEY:** A complete working galley is located along the walkthrough to the aft cabin. The galley has 1 inch thick marble counters and all necessary equipment to please any chef. Counters are located both on the outboard side of the Galley, and also inboard above the engine room.



New 12 v systems for refrigerator and separate 12v freezer – Dometic/Adler Barbour

Princess (3) burner electric cooktop and oven

Hand operated salt and fresh water pumps at sink

(2) Opening ports for light and ventilation

Engine and generator access panels

Double Stainless-Steel Sink

Trash bin, storage lockers and drawers

Fiberglass Fresh Water tanks -total 150-gal capacity ( below Salon floor)

---

## **ELECTRICAL and ELECTRONICS**

---

### **ELECTRICAL:**

This vessel was built for the US market with 110v electric system for AC needs, and 12v for DC needs

Dual 30-amp shore power cords

Generator – Northern Lights 8.5 kw

Mariner battery charger – Promarine 50 Amp (rebuilt Aug 2017)

Victron Energy monitor

Inverter – Power Bright 900 w ( new)

Main electric panel – w/ circuit breakers, Volt meter, amp meter, polarity indicator

(4) new 4D AGM batteries ( secured in Starbd Settee)

New Hela LED spreader lights

New Tri Color Nav light

### **ELECTRONICS:**

EPIRB- Macmurdo 406

Radar - Raymarine R20XX

GPS/Chart Plotter – Raymarine Axiom - NEW

Autopilot -Autohelm ST-7000

Single sideband radio -SEA 222

Ritchie compass

Wind – Raymarine ST-60 - NEW

Depth Finder – Raymarine ST-60

Speed – Raymarine ST-60

Depth/wind/heading - Autohelm

(2) VHF radios – B&G VHF and (1) Cobra Hand held

JVC Stereo w/ (12) disc changer – (8) speakers and 1600 w Amplifier

NAXA flat screen TV – Salon

Magnavox DVD Player

Tank tender gage

Windex – wind indicator ( new)

## Mechanical

---

Engine Yanmar 4JH2 88 HP ( 1130 hrs.-Original)

With NEW Turbo Charger and starter

New transmission seals

(2) blade MAXI feathering prop

Racor fuel filter/water separator – secondary fuel filter on engine

Generator Northern Lights 7.5 kw (300 hrs.)

Maxwell 2200 electric windlass 12 v with deck foot buttons

CQR 45 lb. anchor and chain rode

Danforth anchor w/chain and rode

(2) Lunaire 16,000 BTU Reverse cycle air conditioning

(2) holding tanks

20-gal water heater

(3) Fiberglass fuel tanks – 100-gal total in 3 tanks

JabscoPar Max 4 electric bilge pump ( 2) float switches

Whale manual bilge pump ( in cockpit)

---

## Hull and Deck

---

Comfortable Center Cockpit design makes this vessel an ideal cruising yacht. She also has aft stairs molded into the hull for easy access to her swim platform. Her modified fin keel adds to the performance and good pointing ability of the vessel, and she has a skeg hung rudder for safety. Deck is fiberglass laminate with teak overlay ( teak is worn in some areas – but appears serviceable)

Dodger with SS grabrails

Screens for hatches

Cockpit cushions

10 fixed ports – replaced and rebedded

(8) SS cleats

Bow pulpit – SS

Stern Pulpit – SS w/ teak grate seats in corners

(2) side boarding gates, (1) aft boarding gate

SS radar and wind generator masts

### VENTILATION:

(4) Dorade vents

(8) Opening hatches w/screens

(6) opening opening ports

Companionway hatch

(5) 12v fans, (2) 110v fans

## Sails and Rigging

---

Vessel was designed and rigged for fast cruising, and easy to handle sail plan. She is Sloop rigged, with Forward Roller furling Genoa, Inner forestay for a storm sail, and conventional – full battened main

Aluminum keel stepped mast – mast is stepped on stringer system and is above the bilge

Stainless Steel rod rigging

Removable inner forestay

Running backstays

Harken roller furling Genoa

Harken Bat-cars for the main

Hydraulic backstay adjuster

Hydraulic boom vang – Navtec

Adjustable traveler

Adjustable jib tracks

Winches: = (2) Lewmar #66 self-tailing primary in cockpit

(2) Lewmar # 52 self-tailing secondary winches

(1) Lewmar #48 ELECTRIC halyard winch *on cabin top, behind dodger*

(1) Lewmar #48 self-tailing 2 speed winch *on cabin top, behind dodger*

( 1) self-tailing main sheet winch in cockpit

Main sail - fully battened – w/ Dutchman system and cover

135% Genoa

## Additional Equipment

---

Kidde ABC dry chemical fire extinguishers

PFD's

Throwable ring buoy

Man overboard pole

Jack lines

SS propane Bar B Que grill

Fresh- water shower at transom steps

---

## Exclusions

---

Owner's personal effects

Tender and outboard - optional

paddle boards

---

## Comments

---

Commissioned by Doug Peterson to design a comfortable fast cruising boat, Hans Christian built the

HC-52 to maximize interior space, and to be a sleek performance "BLUE WATER" cruiser. She has 6 ft. 4 in headroom inside, and the highest quality woodwork and joinery you will find on any comparable sailing yacht. She was designed with 2 en-suite cabins, and a third guest or crew cabin.

Her Center Cockpit design allows for maximum use of the deck space, including wide aft deck with (2) built in forward facing seats in the aft pushpit, and room for deck chairs on the spacious aft deck. There are wide side decks for easy movement fore and aft, and a large foredeck for anchor or line handling.

This design also allows for a voluminous interior with nice separation between the Master cabin aft and forward guest cabin. It also affords maximum privacy in the aft cabin as it is separated from Salon by the Galley and passageway aft.

This vessel has been lightly used as evidenced by the low engine and generator hours.

She is a true BLUE WATER vessel and was designed to be a fast and secure passage-maker. Her hull form was also designed for maximum performance from a cruising yacht.

---

## Исключения

---

При продаже яхты исключаются личные вещи владельца.

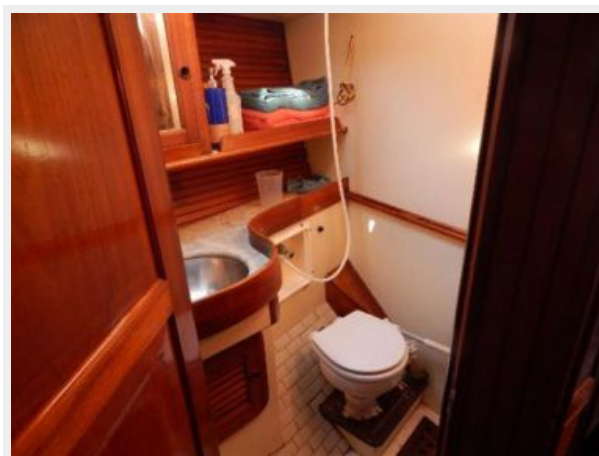
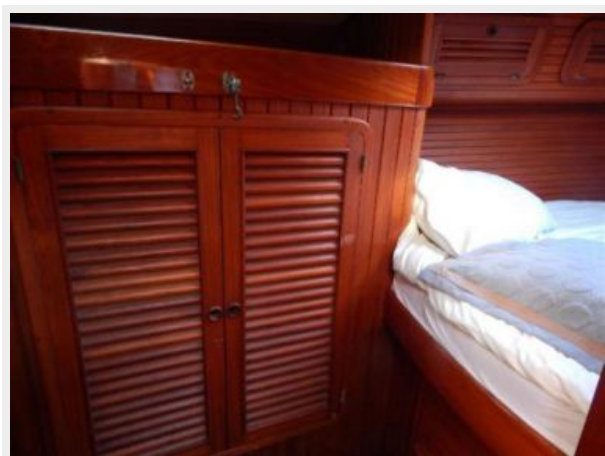
## Отказ от ответственности

---

Компания предоставляет описание судна или яхты добросовестно, но не может гарантировать точность этой информации, а также не ручается за техническое состояние. Покупатель должен проинструктировать своих агентов или оценщиков исследовать представленную информацию более подробно, по собственному желанию. Продажа судна или яхты, изменение цены или снятие с продажи будет происходить без предварительного уведомления.

# ФОТОГРАФИИ



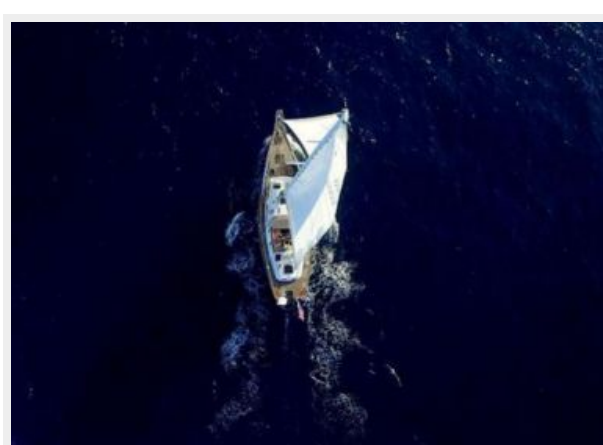
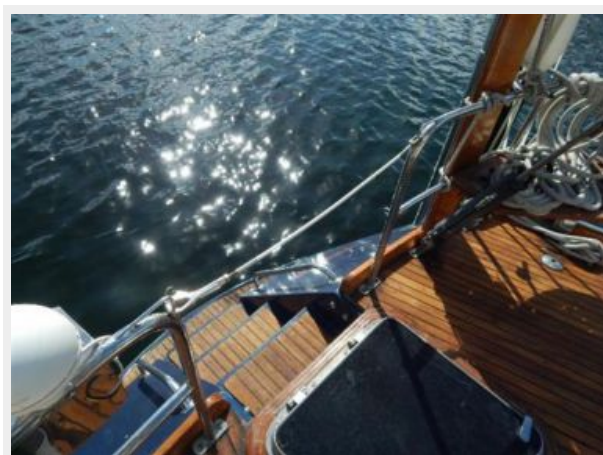


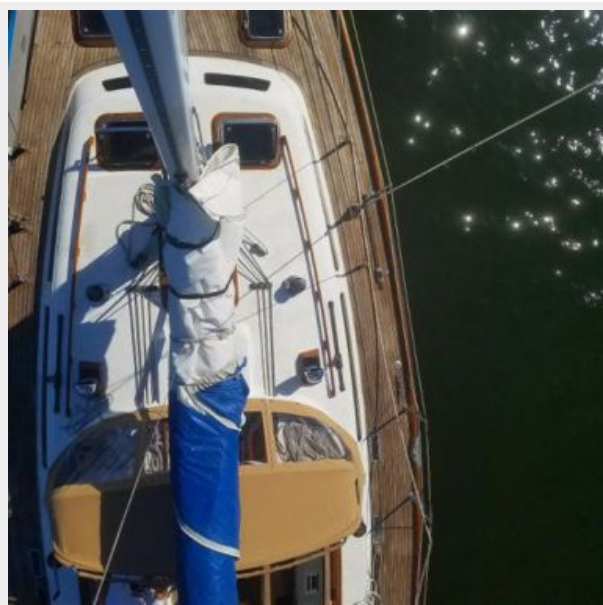












# КОНТАКТЫ

---

Андрей Шестаков (Andrey Shestakov) – ведущий яхтенный брокер отдела продаж яхт и судов компании Shestakov Yacht Sales Inc. Официальный представитель Shestakov Yacht Sales Inc. для русскоговорящих клиентов в центральном офисе компании в Майами/Форт Лодердейл/Флорида/США.

## Контактная информация

---

Email: [andrey@shestakovyachtsales.com](mailto:andrey@shestakovyachtsales.com)

Web: [shestakovyachtsales.com](http://shestakovyachtsales.com)

## Телефоны

---

Краснодарский край: **+7(918)465-66-44**

США, Майами, Флорида: **+1(954)274-4435**

## Время работы

---

Понедельник – Суббота: **9:00 - 21:00**  
EDT

Воскресенье: **Закрито**

## Адрес

---



Harbour Towne Marina, 850 NE 3rd St,  
STE 213, Dania, FL 33004