

50FT 2000 VOYAGE 500 — VOYAGER



Builder: VOYAGER

LOA: 50' 0" (15.24m)

Year Built: 2000

Beam: 27' 3" (8.31m)

Model: Catamaran

Price: PRICE ON APPLICATION

Location: United States Virgin Islands

Our experienced yacht broker, Andrey Shestakov, will help you choose and buy a yacht that best suits your needs 50ft 2000 Voyage 500 — VOYAGER from our catalogue. Presently, at Shestakov Yacht Sales Inc., we have a wide variety of yachts available on our sale's list. We also work in close contact with all the big yacht manufacturers from all over the world.

If you would like to buy a yacht 50ft 2000 Voyage 500 — VOYAGER or would like help answering any questions concerning purchasing, selling or chartering a yacht, please call +1(954)274-4435

TABLE OF CONTENTS

TABLE OF CONTENTS	2
SPECIFICATIONS	4
Overview	4
Basic Information	4
Dimensions	4
Speed, Capacities and Weight	4
Accommodations	5
Hull and Deck Information	5
Engine Information	5
DETAILED INFORMATION	6
Voyage 500 Overview	6
Specs	6
Engines	6
ACCOMODATIONS	6
Galley	7
Deck and Hull Equipment	7
Electronics and Navigation	8
Electrical	8
Plumbing	8
Sails and Rigging	8
Additional information	9
Exclusions	9
Disclaimer	9
PHOTOS	10
Manufacturer Provided Image: 500	15
CONTACTS	16
Contact details	16
Telephones	16

Office hours	16
Address	16

SPECIFICATIONS

Overview

This Voyage 500 has been a fully crewed charter catamaran for the last 5 years, and the attention to detail given by her full-time captain shows from the moment you step onboard.

Since late 2015 the sellers have done the following:

- New Northern Lights 9KW generator (factory installed was 6kw)
- New Yanmar diesel on the starboard side
- New mainsail
- New exterior softgoods
- New dinghy with Yamaha F40 outboard
- All waterways needed for a turn key charter operation
- Bottom paint stripped to gelcoat, barrier coat, and new bottom paint
- Interior fully repainted
- Both sail drives removed, rebuilt, and reinstalled.

Basic Information

Category: Catamaran

Sub Category: Catamaran

Model Year: 2000

Year Built: 2000

Country: United States Virgin Islands

Dimensions

LOA: 50' 0" (15.24m)

LWL: 50' 0" (15.24m)

Beam: 27' 3" (8.31m)

Speed, Capacities and Weight

Displacement: 22660 Pounds

Water Capacity: 210 Gallons

Fuel Capacity: 106 Gallons

Accommodations

Total Cabins: 5

Total Berths: 5

Total Heads: 5

Hull and Deck Information

Hull Material: Fiberglass

Hull Configuration: Catamaran

Engine Information

Engines: 2

Manufacturer: Yanmar

Engine Type: Inboard

Fuel Type: Diesel

DETAILED INFORMATION

Voyage 500 Overview

The Voyage 500 is a luxury charter and bluewater cruising catamaran. Its wide beam offers stability, comfort and exceptional space. The large cockpit area is shaded by a hardtop bimini. The Charter layout includes four queen-size en suite cabins, a crew cabin and day head, a gourmet galley up, and a large saloon and bar counter that allows for entertaining eight guests in comfort. The Owners layout designates the entire starboard hull to the owner offering a desk area, a separate head / shower, and ample cupboard space. All aspects of the design and finish emphasize durability, low maintenance, and safety.

Specs

Designer: Alexander Simonis & Voyage Yachts Keel: Fin Hull Shape: Catamaran Dimensions Beam: 27 ft 3 in LWL: 47 ft 3 in Displacement: 22660 lbs Headroom: 6 ft 3 in Dry Weight: 22660 lbs Engines Engine 1: Engine Brand: Yanmar 4JH5E / 2000 hours Engine Type: Inboard Engine/Fuel Type: Diesel Drive Type: Sail drive Engine Power: 57 HP

Engines

Engine 1: Engine Brand: Yanmar 4JH5E Engine Type: Inboard Engine/Fuel Type: Diesel Drive Type: Sail drive Engine Power: 57 HP

Engine 2: Engine Brand: Yanmar 4JH57 / 420 hours Engine Type: Inboard Engine/Fuel Type: Diesel Drive Type: Sail drive Engine Power: 57 HP

ACCOMODATIONS

5 cabin/5 head layout Large salon and galley up Fully air-conditioned Alcantara upholstered settee

U-Line Ice Maker

Standing height throughout 1.9m or 6'2"

Storage under seating

7 white Hella Turbo fans (port fwd, port aft, starboard fwd, starboard midship, galley, salon, pilot berth)

Lights with dimmers, courtesy lights, spreader lights, boom lights and 12v outlets Sound system -

12v Radio/CD with 6 speakers in salon, mast and cockpit. Toshiba TV

Chart table with recessed chart stowage

Access panels to electrical installation and systems at instrument console and navigation seat

2 guest cabins with heads on port side and starboard side (4 total) | 1 queen cabin mid ship with head.

Sizeable locker at foot of the bunk Back rests above cabin seats Numerous lights with dimmers in main salon, galley and cockpit

Galley

The galley is up on port side Bar with seating for 3 (2) Stainless steel sinks Top opening freezer, 12V air cooled ADLER/BARBOUR (near the bar) Top-opening cooler (galley counter) Front-opening refrigerator, 12V air cooled ADLER/BARBOUR. All cookware and plate settings for 10 4-Burner propane hob and propane oven Cook top over the oven Corian-type work surfaces with stainless steel rails and fiddles NEW 2015 Microwave oven cabinet Large recessed drip tray Pressurized hot and cold water

Deck and Hull Equipment

Bow pulpits with teak bow seats Double guard wires with gates Grab rails on coach roof Pushpits on stern with brackets for life ring buoys and overboard lights Stanchions and stanchion bases Swim ladder port and starboard Water stays attachment points for bow sprit BBQ – propane gas supply, quick coupler with hose, solenoid switch and stainless steel post (2) GRP locker lids: foredeck (6) GRP locker lids: cockpit (8) Reflective laminated safety glass windows (11) LEWMAR port lights (15) LEWMAR hatches Stainless steel deck latches Ventilation/escape hatch with teak grid Cockpit and aft deck:

Anodized aluminum-framed sliding door with safety glass and fixed opening positions (6) Storage lockers Cockpit deck level walk through to dive platform BBQ mounting point Dive equipment and dive tank lockers Double helmsman's seat: Opaque white sliding hatch over helmsman Steering console with instrument console and stainless steel steering wheel GRP cockpit table Hard top Bimini and spray dodger Bimini skirt – rear (Soltis) (2) Bimini side skirts: Toast Sunbrella (2) Sheet pouches Utility pouch Extra wide Teak dive platform/aft deck Traveller arch Telescopic boom derrick for hauling dinghy onto dive platform Integral exit sheave on mast and jammer at winch

Electric windlass: LOFRANS Anchor chain 40kg DELTA anchor with tipper 50m galvanized chain and 50m nylon anchor rode Anchor bridle for anchoring Fortress anchor F37 with 10' chain (secondary anchor) Deck wash system (fresh and salt) with faucets in aft locker and chain locker Dock lines and fenders Two anchor rollers, one with tipper (8) Aluminum mooring cleats Teak

walkway between trampolines Tracks, cars, jammers and blocks Webbing trampolines 14'
Dinghy and Yamaha 40hp 4-stroke Outboard NEW

Electronics and Navigation

Compass ICOM M-402 VHF Radio RAYMARINE ST60 Tridata & Wind RAYMARINE ST6001.
Raymarine Autopilot with WHITLOCK rotary drive, active Heading Sensor Type 150G. Corepack
with Rate Gyro and AST GPS/Chart Plotter – Raymarine 4kw with E120 multifunction display
with E80 repeater ICOM Handheld ELECTRICAL, POWER and PLUMBING

Electrical

Northern Light 9KW NEW 2016 Freedom Marine inverter/charger 2000 (2) 125A AMPLE
alternators with SMART multi-stage regulators (2) Engine start batteries (12V) @ 65 AH AC
shore cable socket Battery isolator switches Ceiling lights Circuit breaker panel Cockpit lights
Deck light Interior AC outlets: 4 in salon, 1 in each cabin Lazarette and engine compartment light
LINK 2000 battery management system (2) 110-volt outlets at each end of the sliding door
lockers in the salon 110-volt outlet in place of 12 volt outlet at nav. Move 12 v outlet to sliding
door locker 1 x 110 volt outlet behind nav top panel for future TV installation. 2 x small
fluorescent strip lights on either side of LED above navstation Extra halogen ceiling light in panel
above stbd galley sink 200 mm aft from front edge Ships load battery banks (12V) gel - 400AH,
(2) 800AH

Plumbing

(2) Black water systems and holding tanks (2) Manual bilge pumps (2) Water heaters 30 liters (4)
Automatic electric bilge pumps (5) Grey water systems Pressurized hot and cold deck shower,
self draining All heads upgraded to Jabsco Electric Flush Watermaker Fresh water flush
Propane: automatic propane shut-off safety control ENGINE and MECHANICAL

(2) 57hp freshwater-cooled YANMAR diesel engines with sail drives and props (2) Instrument
panels with engine-hour meters High pressure fuel line Sound insulation Tank gauges

Sails and Rigging

7/8th fractional rig Anodized aluminum mast triple spreaders, boom, cross beam Mast top and
lower navigation lights Navigation lights - Mast head anchor/ tri-color and all rail lights (2)
Reefing lines (2) Luff pendants Fully battened main with large roach, (3) reef points, 11.9 oz high
modulus cross-cut Dacron 2-ply Leech Furling Genoa with foam luff and UV cover, 8.3 oz high
modulus cross-cut Dacron HARKEN battcar system for mainsail Mainsail stowage pack with lazy
jacks PROFURL genoa roller furler 4 Winches – 1 electric

Additional information

Antifouling over epoxy Closed-cell PVC foam core, vacuum bonded for stiffness, strength and minimal weight Forward watertight compartments with horizontal bulkheads Hand laid-up GRP construction using multilayers of QuadraXial glass roving, isophthalic Orthophthalic polyester resin and other high-grade material Low aspect reinforced keels Marine ply and balsa core on critical structure bulkheads for added strength and stiffness Reinforced fitting areas for cleats and NEW chain plates 4 Bean Bag Chairs / SUP / Blow up Island / Pull Tube

Exclusions

Owner's personal belongings.

Disclaimer

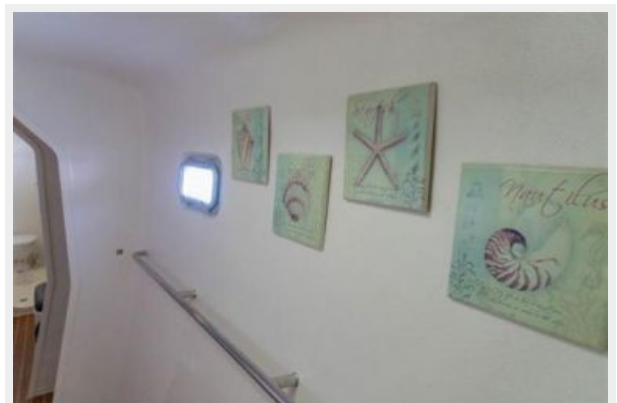
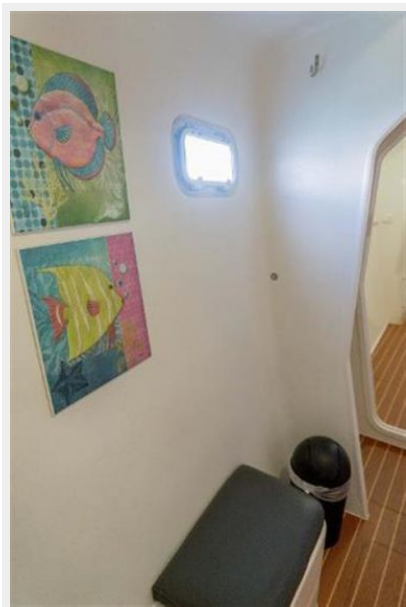
The Company offers the details of this vessel or yacht in good faith but cannot guarantee or warrant the accuracy of this information nor warrant the condition of the vessel. A buyer should instruct his representatives, agents, or his surveyors, to investigate such details as the buyer desires validated. This vessel or yacht is offered subject to prior sale, price change, or withdrawal without notice.

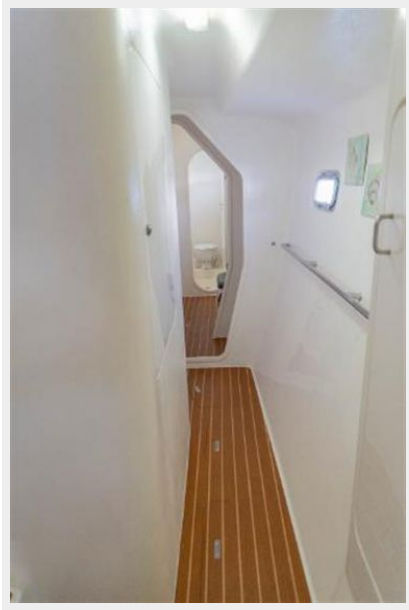
PHOTOS

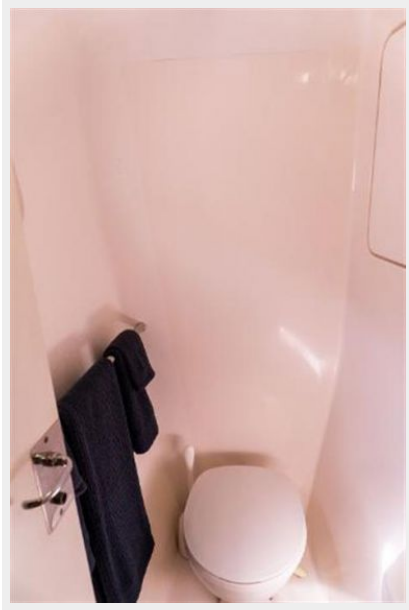




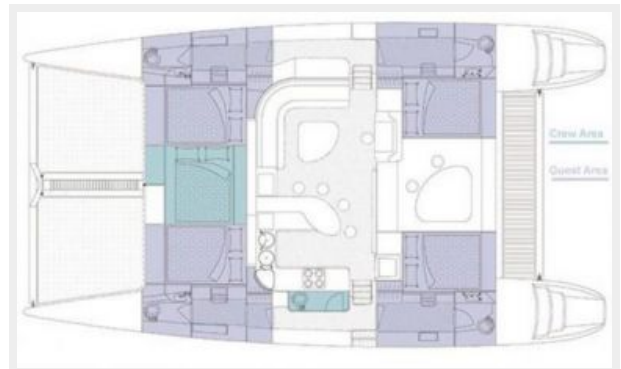








Manufacturer Provided Image: 500



CONTACTS

Andrey Shestakov, leading yacht broker of the sales department of Shestakov Yacht Sales Inc. Shestakov Yacht Sales Inc., the official representative of the Miami/Fort Lauderdale FL headquarters.

Contact details

Email: andrey@shestakovyachtsales.com

Web: shestakovyachtsales.com/en/

Telephones

USA: +1(954)274-4435

Office hours

Monday – Saturday: **9:00 - 21:00** EDT

Sunday: **closed**

Address



Harbour Towne Marina, 850 NE 3rd St,
STE 213, Dania, FL 33004