

50FT 2000 VOYAGE 500 — VOYAGER



Судостроитель: VOYAGER

Длина общая: 50' 0" (15.24m)

Год постройки: 2000

Ширина: 27' 3" (8.31m)

Модель: Катамаран

Цена: ЦЕНА ЯХТЫ ПО ЗАПРОСУ

Местонахождение: United States Virgin Islands

Купить 50ft 2000 Voyage 500 — VOYAGER а также выбрать подходящую вам яхту из нашего каталога яхт вам поможет опытный яхтенный брокер Андрей Шестаков. На сегодняшний день компания Shestakov Yacht Sales Inc. имеет большое количество яхт в собственном списке продаж, а также тесно сотрудничает со всеми крупными яхтенными производителями по всему миру.

Для того чтобы купить яхту 50ft 2000 Voyage 500 — VOYAGER а также проконсультироваться по любому вопросу связанному с покупкой, продажей, чартером яхт позвоните по телефону **+7(918)465-66-44**.

ОГЛАВЛЕНИЕ

ОГЛАВЛЕНИЕ	2
ХАРАКТЕРИСТИКИ	4
Обзор	4
Основная информация	4
Размеры	4
Скорость, вместимость и масса	4
Размещение	5
Корпус и палуба	5
Информация о двигателе	5
ПОДРОБНОЕ ОПИСАНИЕ	6
Voyage 500 Overview	6
Specs	6
Engines	6
ACCOMODATIONS	6
Galley	7
Deck and Hull Equipment	7
Electronics and Navigation	8
Electrical	8
Plumbing	8
Sails and Rigging	8
Additional information	9
Исключения	9
Отказ от ответственности	9
ФОТОГРАФИИ	10
Manufacturer Provided Image: 500	15
КОНТАКТЫ	16
Контактная информация	16
Телефоны	16

Время работы	16
Адрес	16

ХАРАКТЕРИСТИКИ

Обзор

This Voyage 500 has been a fully crewed charter catamaran for the last 5 years, and the attention to detail given by her full-time captain shows from the moment you step onboard.

Since late 2015 the sellers have done the following:

- New Northern Lights 9KW generator (factory installed was 6kw)
- New Yanmar diesel on the starboard side
- New mainsail
- New exterior softgoods
- New dinghy with Yamaha F40 outboard
- All waterways needed for a turn key charter operation
- Bottom paint stripped to gelcoat, barrier coat, and new bottom paint
- Interior fully repainted
- Both sail drives removed, rebuilt, and reinstalled.

Основная информация

Тип судна: Катамаран

Подкатегория: Катамаран

Модельный год: 2000

Год постройки: 2000

Страна: United States Virgin Islands

Размеры

Длина общая: 50' 0" (15.24m)

Длина по ватерлинии: 50' 0" (15.24m)

Ширина: 27' 3" (8.31m)

Скорость, вместимость и масса

Водоизмещение: 22660 Pounds

Вместимость воды: 210 Gallons

Объем топливного бака: 106 Gallons

Размещение

Всего кают: 5

Всего коек: 5

Всего ком. состава: 5

Корпус и палуба

Материал корпуса: Fiberglass

Комплектация корпуса: Катамаран

Информация о двигателе

Двигатели: 2

Производитель: Yanmar

Тип двигателя: Inboard

Тип топлива: Diesel

ПОДРОБНОЕ ОПИСАНИЕ

Voyage 500 Overview

The Voyage 500 is a luxury charter and bluewater cruising catamaran. Its wide beam offers stability, comfort and exceptional space. The large cockpit area is shaded by a hardtop bimini. The Charter layout includes four queen-size en suite cabins, a crew cabin and day head, a gourmet galley up, and a large saloon and bar counter that allows for entertaining eight guests in comfort. The Owners layout designates the entire starboard hull to the owner offering a desk area, a separate head / shower, and ample cupboard space. All aspects of the design and finish emphasize durability, low maintenance, and safety.

Specs

Designer: Alexander Simonis & Voyage Yachts Keel: Fin Hull Shape: Catamaran Dimensions Beam: 27 ft 3 in LWL: 47 ft 3 in Displacement: 22660 lbs Headroom: 6 ft 3 in Dry Weight: 22660 lbs Engines Engine 1: Engine Brand: Yanmar 4JH5E / 2000 hours Engine Type: Inboard Engine/Fuel Type: Diesel Drive Type: Sail drive Engine Power: 57 HP

Engines

Engine 1: Engine Brand: Yanmar 4JH5E Engine Type: Inboard Engine/Fuel Type: Diesel Drive Type: Sail drive Engine Power: 57 HP

Engine 2: Engine Brand: Yanmar 4JH57 / 420 hours Engine Type: Inboard Engine/Fuel Type: Diesel Drive Type: Sail drive Engine Power: 57 HP

ACCOMODATIONS

5 cabin/5 head layout Large salon and galley up Fully air-conditioned Alcantara upholstered settee

U-Line Ice Maker

Standing height throughout 1.9m or 6'2"

Storage under seating

7 white Hella Turbo fans (port fwd, port aft, starboard fwd, starboard midship, galley, salon, pilot berth)

Lights with dimmers, courtesy lights, spreader lights, boom lights and 12v outlets Sound system -

12v Radio/CD with 6 speakers in salon, mast and cockpit. Toshiba TV

Chart table with recessed chart stowage

Access panels to electrical installation and systems at instrument console and navigation seat

2 guest cabins with heads on port side and starboard side (4 total) | 1 queen cabin mid ship with head.

Sizeable locker at foot of the bunk Back rests above cabin seats Numerous lights with dimmers in main salon, galley and cockpit

Galley

The galley is up on port side Bar with seating for 3 (2) Stainless steel sinks Top opening freezer, 12V air cooled ADLER/BARBOUR (near the bar) Top-opening cooler (galley counter) Front-opening refrigerator, 12V air cooled ADLER/BARBOUR. All cookware and plate settings for 10 4-Burner propane hob and propane oven Cook top over the oven Corian-type work surfaces with stainless steel rails and fiddles NEW 2015 Microwave oven cabinet Large recessed drip tray Pressurized hot and cold water

Deck and Hull Equipment

Bow pulpits with teak bow seats Double guard wires with gates Grab rails on coach roof Pushpits on stern with brackets for life ring buoys and overboard lights Stanchions and stanchion bases Swim ladder port and starboard Water stays attachment points for bow sprit BBQ – propane gas supply, quick coupler with hose, solenoid switch and stainless steel post (2) GRP locker lids: foredeck (6) GRP locker lids: cockpit (8) Reflective laminated safety glass windows (11) LEWMAR port lights (15) LEWMAR hatches Stainless steel deck latches Ventilation/escape hatch with teak grid Cockpit and aft deck:

Anodized aluminum-framed sliding door with safety glass and fixed opening positions (6) Storage lockers Cockpit deck level walk through to dive platform BBQ mounting point Dive equipment and dive tank lockers Double helmsman's seat: Opaque white sliding hatch over helmsman Steering console with instrument console and stainless steel steering wheel GRP cockpit table Hard top Bimini and spray dodger Bimini skirt – rear (Soltis) (2) Bimini side skirts: Toast Sunbrella (2) Sheet pouches Utility pouch Extra wide Teak dive platform/aft deck Traveller arch Telescopic boom derrick for hauling dinghy onto dive platform Integral exit sheave on mast and jammer at winch

Electric windlass: LOFRANS Anchor chain 40kg DELTA anchor with tipper 50m galvanized chain and 50m nylon anchor rode Anchor bridle for anchoring Fortress anchor F37 with 10' chain (secondary anchor) Deck wash system (fresh and salt) with faucets in aft locker and chain locker Dock lines and fenders Two anchor rollers, one with tipper (8) Aluminum mooring cleats Teak

walkway between trampolines Tracks, cars, jammers and blocks Webbing trampolines 14'
Dinghy and Yamaha 40hp 4-stroke Outboard NEW

Electronics and Navigation

Compass ICOM M-402 VHF Radio RAYMARINE ST60 Tridata & Wind RAYMARINE ST6001.
Raymarine Autopilot with WHITLOCK rotary drive, active Heading Sensor Type 150G. Corepack
with Rate Gyro and AST GPS/Chart Plotter – Raymarine 4kw with E120 multifunction display
with E80 repeater ICOM Handheld ELECTRICAL, POWER and PLUMBING

Electrical

Northern Light 9KW NEW 2016 Freedom Marine inverter/charger 2000 (2) 125A AMPLE
alternators with SMART multi-stage regulators (2) Engine start batteries (12V) @ 65 AH AC
shore cable socket Battery isolator switches Ceiling lights Circuit breaker panel Cockpit lights
Deck light Interior AC outlets: 4 in salon, 1 in each cabin Lazarette and engine compartment light
LINK 2000 battery management system (2) 110-volt outlets at each end of the sliding door
lockers in the salon 110-volt outlet in place of 12 volt outlet at nav. Move 12 v outlet to sliding
door locker 1 x 110 volt outlet behind nav top panel for future TV installation. 2 x small
fluorescent strip lights on either side of LED above navstation Extra halogen ceiling light in panel
above stbd galley sink 200 mm aft from front edge Ships load battery banks (12V) gel - 400AH,
(2) 800AH

Plumbing

(2) Black water systems and holding tanks (2) Manual bilge pumps (2) Water heaters 30 liters (4)
Automatic electric bilge pumps (5) Grey water systems Pressurized hot and cold deck shower,
self draining All heads upgraded to Jabsco Electric Flush Watermaker Fresh water flush
Propane: automatic propane shut-off safety control ENGINE and MECHANICAL

(2) 57hp freshwater-cooled YANMAR diesel engines with sail drives and props (2) Instrument
panels with engine-hour meters High pressure fuel line Sound insulation Tank gauges

Sails and Rigging

7/8th fractional rig Anodized aluminum mast triple spreaders, boom, cross beam Mast top and
lower navigation lights Navigation lights - Mast head anchor/ tri-color and all rail lights (2)
Reefing lines (2) Luff pendants Fully battened main with large roach, (3) reef points, 11.9 oz high
modulus cross-cut Dacron 2-ply Leech Furling Genoa with foam luff and UV cover, 8.3 oz high
modulus cross-cut Dacron HARKEN battcar system for mainsail Mainsail stowage pack with lazy
jacks PROFURL genoa roller furler 4 Winches – 1 electric

Additional information

Antifouling over epoxy Closed-cell PVC foam core, vacuum bonded for stiffness, strength and minimal weight Forward watertight compartments with horizontal bulkheads Hand laid-up GRP construction using multilayers of Quadraxial glass roving, isophthalic Orthophthalic polyester resin and other high-grade material Low aspect reinforced keels Marine ply and balsa core on critical structure bulkheads for added strength and stiffness Reinforced fitting areas for cleats and NEW chain plates 4 Bean Bag Chairs / SUP / Blow up Island / Pull Tube

Исключения

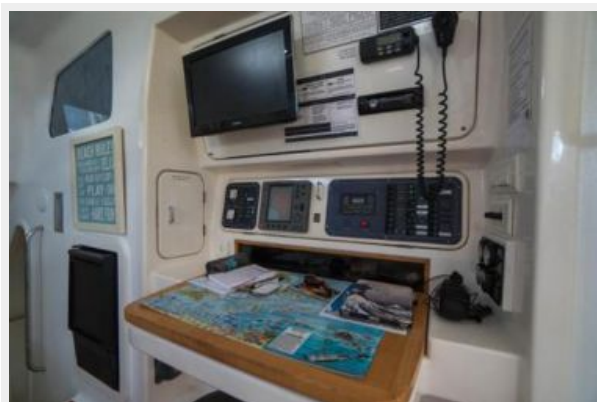
При продаже яхты исключаются личные вещи владельца.

Отказ от ответственности

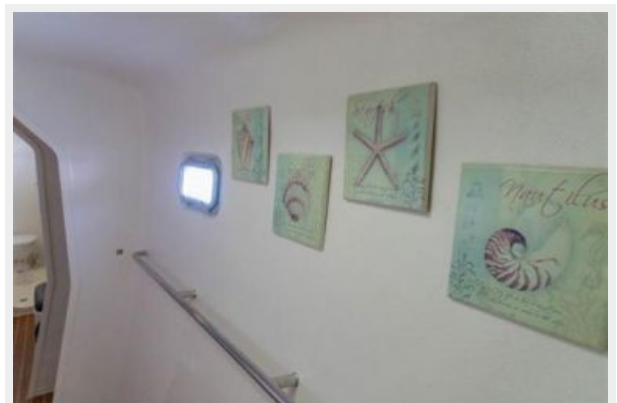
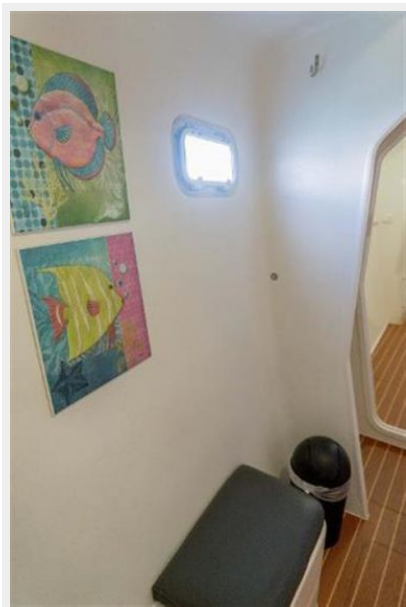
Компания предоставляет описание судна или яхты добросовестно, но не может гарантировать точность этой информации, а также не ручается за техническое состояние. Покупатель должен проинструктировать своих агентов или оценщиков исследовать представленную информацию более подробно, по собственному желанию. Продажа судна или яхты, изменение цены или снятие с продажи будет происходить без предварительного уведомления.

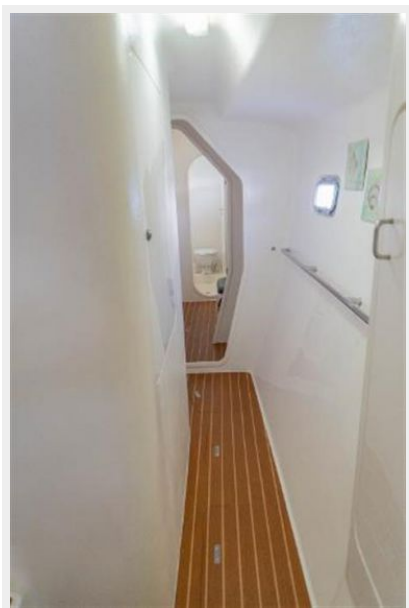
ФОТОГРАФИИ

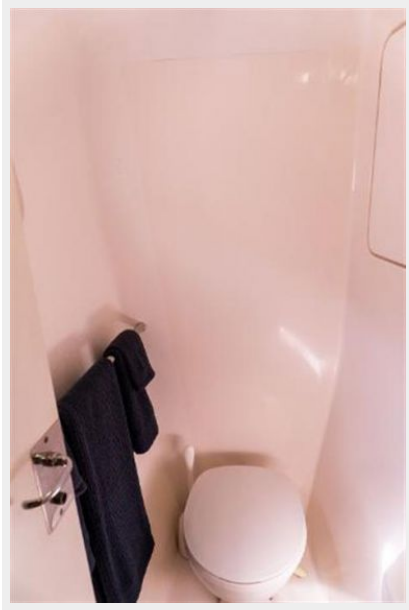




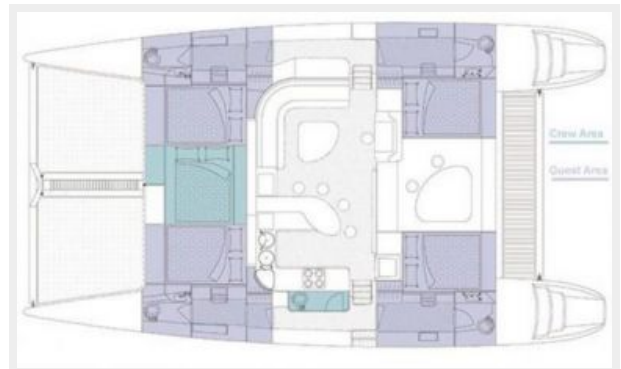








Manufacturer Provided Image: 500



КОНТАКТЫ

Андрей Шестаков (Andrey Shestakov) – ведущий яхтенный брокер отдела продаж яхт и судов компании Shestakov Yacht Sales Inc. Официальный представитель Shestakov Yacht Sales Inc. для русскоговорящих клиентов в центральном офисе компании в Майами/Форт Лодердейл/Флорида/США.

Контактная информация

Email: andrey@shestakovyachtsales.com

Web: shestakovyachtsales.com

Телефоны

Краснодарский край: **+7(918)465-66-44**

США, Майами, Флорида: **+1(954)274-4435**

Время работы

Понедельник – Суббота: **9:00 - 21:00**
EDT

Воскресенье: **Закрето**

Адрес



Harbour Towne Marina, 850 NE 3rd St,
STE 213, Dania, FL 33004