

DOLCE VITA — BENETEAU



Builder: BENETEAU

Year Built: 2016

Model: Cruising Sailboat

Price: PRICE ON APPLICATION

Location: United States

LOA: 60' 0" (18.29m)

Beam: 16' 4" (4.98m)

Max Draft: 6' 11" (2.11m)

Our experienced yacht broker, Andrey Shestakov, will help you choose and buy a yacht that best suits your needs **DOLCE VITA — BENETEAU** from our catalogue. Presently, at Shestakov Yacht Sales Inc., we have a wide variety of yachts available on our sale's list. We also work in close contact with all the big yacht manufacturers from all over the world.

If you would like to buy a yacht **DOLCE VITA — BENETEAU** or would like help answering any questions concerning purchasing, selling or chartering a yacht, please call **+1(954)274-4435**

TABLE OF CONTENTS

TABLE OF CONTENTS	2
SPECIFICATIONS	5
Overview	5
Basic Information	5
Dimensions	5
Speed, Capacities and Weight	5
Accommodations	6
Hull and Deck Information	6
DETAILED INFORMATION	7
INTRODUCTION	7
Construction	7
Deck	7
Accommodations	9
Machinery	12
Electrical System	13
Electronics	14
Sails and Rigging	14
Additional Equipment	15
Exclusions	16
Exclusions	16
Disclaimer	16
PHOTOS	17
Aft Stbd. Quarter	17
Aerial View, Sistership	17
Main Salon	17
Main Salon, Stbd.	17
Main Salon, Port	17
Main Salon, Port Settee	17

Wine Cellar	18
Main Salon, Looking Aft	18
Nav Station	18
Companionway	18
Locking Companionway System	18
Galley	18
Additional Fridge, Washer/Dryer	19
Fridge and Freezer	19
Master Stateroom Storage	19
Master Stateroom	19
Master Head	20
Master Shower	20
Port Guest Cabin	20
Port Guest Head/Shower	20
Stbd. Guest Cabin	21
Stbd Guest Cabin	21
Stbd. Guest Head and Shower	21
Stbd. Guest Vanity	21
Stbd. Guest Shower	22
Crew Cabin, from above	22
Bow	22
Deck	22
Mast Base	22
Mast	22
Main Sail	23
Bimini and Dodger	23
Cockpit Cushions	23
Cockpit	23
Cockpit, Sailing	23

Cockpit, Sistership	23
Stbd. Stern Quarter	24
Dinghy	24
Davits	24
At Anchor, Maine	24
Stern, at Anchor	24
Volvo Engine	24
Volvo Engine	25
Engine Mounts	25
Generator	25
Interior Layout	25
Deck Layout	25
CONTACTS	26
Contact details	26
Telephones	26
Office hours	26
Address	26

SPECIFICATIONS

Overview

DOLCE VITA is a virtually new Beneteau Oceanis 60 – the flagship and queen of the Beneteau Series. Although her model year is 2016, she was not commissioned and her warranties did not start until May, 2017. She has only one summer of sailing on her hull. Unlike a brand new boat, she is fully outfitted and commissioned for the serious cruiser with tender, davits, satellite TV, canvas, spare equipment etc. She has most of the available options and the preferable shoal draft keel, which lets her cruise many places not available to her deep-draft sisters. DOLCE VITA is ideally suited for any type of cruising sailor - with power headsail furling, bow thruster and electric winches, she is easy to handle shorthanded. However, if crew is desired, she has the optional separate crew quarters and head hidden forward of the master stateroom. DOLCE VITA is ready to go cruising in every way! Her warranties are transferable to the next owner, and the RI LLC that owns her is available as well.

Basic Information

Category: Cruising Sailboat

Sub Category: Sloop

Model Year: 2016

Year Built: 2016

Country: United States

Vessel Top: Dodger

Dimensions

LOA: 60' 0" (18.29m)

LWL: 53' 11" (16.43m)

Beam: 16' 4" (4.98m)

Max Draft: 6' 11" (2.11m)

Clearance: 90' 3" (27.51m)

Speed, Capacities and Weight

Displacement: 48600 Pounds

Water Capacity: 187 Gallons

Fuel Capacity: 159 Gallons

Accommodations

Total Cabins: 3

Total Berths: 5

Sleeps: 6

Total Heads: 3

Crew Cabin: 1

Crew Berths: 2

Crew Sleeps: 2

Crew Heads: 1

Hull and Deck Information

Hull Material: Fiberglass

Deck Material: Teak

Hull Color: White

Hull Designer: Berret Racoupeau Yacht
Design

DETAILED INFORMATION

INTRODUCTION

DOLCE VITA is a virtually new Beneteau Oceanis 60 – the flagship and queen of the Beneteau Series. Although her model year is 2016, she was not commissioned and her warranties did not start until May, 2017. She has only one summer of sailing on her hull. Unlike a brand new boat, she is fully outfitted and commissioned for the serious cruiser with tender, davits, satellite TV, canvas, spare equipment etc. She has most of the available options and the preferable shoal draft keel, which lets her cruise many places not available to her deep-draft sisters. DOLCE VITA is ideally suited for any type of cruising sailor - with power headsail furling, bow thruster and electric winches, she is easy to handle shorthanded. However, if crew is desired, she has the optional separate crew quarters and head hidden forward of the master stateroom. DOLCE VITA is ready to go cruising in every way! Her warranties are transferable to the next owner, and the RI LLC that owns her is available as well.

Construction

- Designed to CE Certification
- Monolithic hull in polyester
- Monolithic structural hull liner laminated and bonded to the hull
- Deck in balsa and glass fiber sandwich covered in diamond-point-type non-slip surface
- Deck hull joint bonded and screwed, with solid wood toe rail
- Cast iron keel fixed with bolts and stainless steel backing plates
- Rudder hung with glass compound stock
- White colored hull, gray metal hull decoration

Deck

- Custom dinghy davits
- Self-draining chain locker
- Hatch access to chain locker in sail locker / forepeak cabin
- Stainless steel bow fitting with (2) anchor rollers
- Asymmetric spinnaker tack point - stainless steel bobstay
- 24 V - 2000 W vertical electric windlass with remote control
- (8) Aluminum mooring cleats
- Stainless steel deck line protection

STEERING

- Lewmar torque rod steering system at twin pedestals with 44" Mini-Maxi stainless steel wheels

- (2) Brown suede leather wheel covers

SAFETY ON DECK

- (1) Open stainless steel forward pulpit - step
- (2) Stainless steel aft pushpits
- (1) Ring lifebuoy bracket
- (1) Outboard engine bracket
- (2) Flag mounts welded on aft pushpit
- Double lifelines and stainless steel stanchions - Access to port and starboard in lifelines
- (2) Stainless steel handrails on deck
- (2) Stainless steel handrails on fixed arch
- (2) Stainless steel grabrails on cockpit coaming
- (2) Stainless steel handrails on helm seats

COCKPIT

- Self-bailing cockpit, natural solid wood deck
- (2) Lockers under helm seat with gas cylinder opening
- (2) Rope lockers - step plate in front of steering station
- Natural solid wood slatted cockpit benches
- (2) Steering wheel consoles with stainless steel steering wheels
- (2) Helm seats
- Deck plate for access to tiller system
- (1) Emergency tiller
- Engine throttle and control panel to starboard
- Solid wood cockpit table
- (2) Flaps - guy wash boards
- Glove boxes
- Bottle holder
- 12 V power outlet
- Lamp with shade
- Switch cover
- (2) Waterproof speakers below arch
- LED lamps under arch
- Folding companionway door and PMMA sliding companionway hatch with electric locking system

AFT COCKPIT

- Open access protected by stainless steel lifelines
- (1) Stainless steel door
- Natural solid wood sole on swim platform
- (1) Life raft locker on starboard side with gas cylinder opening

TENDER ROOM

- (1) Gas locker on port side with gas cylinder opening
- (2) Watertight lockers at the bottom of the dinghy storage space
- Central storage compartment at bottom of dinghy storage space
- Stainless steel retractable swim ladder with solid wood steps
- Hot and cold cockpit shower
- Shore power supply
- Lounge area behind the helm
- Ladder to access swim platform (articulating)

Accommodations

GENERAL DESCRIPTION

- Woodwork: Alpi mahogany
- Parquet-type laminated floors
- Cushions
- Ceiling panels, bulkhead and hull liner covered with PVC fabric
- All heads can switch back and forth from using fresh to salt water

COMPANIONWAY

- Powered entrance companionway system with (2) remote controls
- Wooden companionway with steps in molded wood with non-slip surface
- Stainless steel leather-covered stairway handrails
- Canopy with shade

SALON

- Samsung 40" LED flat screen TV on lift, retracts behind settee
- Electric blinds
- U-shaped salon bench with fabric upholstery
- Retractable central seat with fabric upholstery
- Swivel foldaway salon wood table with lacquered tabletop with inlay, and integrated bar
- Sofa with armrests
- Cupboard units - cubbyhole lockers and storage along the hull
- Storage space under seats and sofa
- Bottle cabinet behind port settee
- (1) Panoramic glazing with blackout blinds / mosquito screens
- (2) Hull portholes with blackout curtains
- (2) Fixed deckhouse side windows with pleated blinds
- (4) Opening portholes in fixed side windows

CHART TABLE - STARBOARD

- Control console with flap, glove boxes and storage with molded wood beading

- Navigator seat with cushion and backrest
- Hinged backlit electrical panel
- Navigation instrument panel
- Wet locker

GALLEY - PORTSIDE

- U-shaped galley
- Synthetic resin worktop
- Rectangular stainless steel sink
- Cutting board of solid wood
- (1) Shower hose mixer-tap for hot/cold water
- (1) Gas stove with (3) burners, stainless steel grill and oven on gimbal mountings with stainless steel protection handrail
- Refrigeration unit, front-opening with 2-speed compressor
- Freezer unit, top-opening
- Icemaker
- Microwave
- Dishwasher
- Washer/Dryer
- Drawers with slides and buffers, cupboard units, equipped lockers (shelves with fiddles for plate storage, tea towel holder, bottle holder)
- Integral trash container
- (1) Opening porthole with blackout curtain

STARBOARD AFT CABIN

- (2) Single beds, can be joined to make a double bed
- Marine mattresses
- Hanging locker
- Cubbyhole lockers
- Glove boxes
- (1) Dressing table with mirror
- Hallway mirror
- (1) Opening porthole on cockpit with blackout curtain
- (1) Opening porthole with blackout curtain
- (1) Window to transom with blackout curtain
- (1) Opening porthole towards transom

STARBOARD AFT HEAD

- Private head compartment accessible from starboard aft cabin
- Separate stall shower
- Electric Jabsco marine toilet, plumbed for both salt and fresh water
- (1) Rigid holding tank (21 US gal.)

- Sink with synthetic resin worktop
- Mixing tap hot / cold water
- Mirror
- Cubbyhole locker
- (2) Opening portholes with curtain

PORT AFT CABIN

- (1) Double bed
- Marine mattress
- Hanging locker
- Cubbyhole lockers
- Glove boxes
- Hallway mirror
- (1) Opening porthole on cockpit with blackout curtain
- (1) Opening porthole with blackout curtain
- (1) Window to transom with blackout curtain
- (1) Opening porthole towards transom

PORT AFT HEAD

- Head accessible from the port aft cabin and from the salon
- Separate stall shower
- Electric Jabsco marine toilet, plumbed for both salt and fresh water
- (1) Rigid holding tank (21 US gal.)
- Sink with synthetic resin worktop
- Mixing tap hot / cold water
- Mirror
- Toilet accessories
- Cubbyhole locker

MASTER STATEROOM

- Island queen berth
- Marine mattress
- Samsung 28" LED flat screen TV
- Fusion stereo (separate from main system)
- Night tables
- Cubbyhole lockers
- Drawers
- Glove boxes
- Lockers under the bed (gas cylinder opening)
- Safe under bed
- Wardrobe with cupboard and shoe cabinet
- Dressing table with mirror and removable seat

- Hallway mirror
- (2) Hull portholes with blackout curtains
- (3) Opening hatches with blackout blind / mosquito screen

MASTER HEAD

- Private washroom accessible from forward cabin
- Separate stall shower
- Electric Jabsco marine toilet (plumbed for both salt and fresh water)
- Sink with synthetic resin worktop
- Mixing tap hot / cold water
- (2) Mirrors
- Toilet accessories
- Cubbyhole lockers
- (1) Opening hatch with sunshades/mosquito screen

FOREPEAK CREW CABIN

- Access through deck hatch (with ventilation): stainless steel ladder, solid wood steps
- Headroom: 6'-4"
- (2) Bunk berths
- Foam mattresses
- Hanging locker
- Storage locker
- Cupboard
- Manual toilet
- Sink
- Showerhead mixer tap, hot / cold water
- Shower tray

Machinery

- Volvo 150 hp diesel engine
- Engine electrical control and panel in the starboard cockpit
- Engine compartment: Foam soundproofing and ventilation with (1) air intake and (1) air outlet
- (1) Alternator 12 V, 120 amps
- (1) Alternator 24 V, 80 amps
- Stainless steel shaft line
- 3-Blade folding propeller
- Engine access through companionway (opening near gas cylinders)
- Engine access through passageway and aft cabins
- Air conditioning throughout the interior

Electrical System

- Cummins 11 kW generator
- 12 V Circuit
- 24 V Circuit
- 230 V Circuit
- Ducts with messenger lines for electric cables or future upgrades
- (1) 230 V electrical panel: breaker - voltmeter
- (1) 115 V electrical panel: breaker - voltmeter
- (1) 12 V / 24 V electrical panel: breaker - voltmeter - water gauge - fuel gauge - 24 V charging current and consumption current measurement
- Electrical equipment controls located in aft port cabin

12 V CIRCUIT

- (1) 12 V - 110 amp engine battery
- Battery switch in port passageway
- 12 V load balancer
- (1) 12 V - 25 amp engine battery charger
- (2) 12 V power outlets: (1) at chart table, (1) at cockpit table

24 V CIRCUIT

- Electric windlass with chain counter
- Pumps
- Navigation lights
- Lighting
- Refrigeration units
- Bow thruster
- (1) 24 V - 280 amp service battery set: (4) 12 V - 140 amp batteries
- Battery switch (port passageway)
- 24 V load balancer
- (1) 24 V - 60 amp engine battery charger

115 V CIRCUIT

- Lighting
- Interior lights LED
- Overhead lights
- Indirect lighting
- Adjustable wall-mounted luminaires and reading lamps
- Courtesy lamps in wardrobes

OUTSIDE LIGHTING

- Incandescent: Deck light at mid mast, spreaders spotlight, lamp on cockpit table with shade

- LED lamps under arch
- LED navigation lights with controls on chart table and on starboard helm
- (1) Mooring light at mast top
- (1) Automatic steaming light at mid mast
- (1) Port navigation light
- (1) Starboard navigation light on bow
- (1) Sternlight on pushpit to starboard

ADDITIONAL

- 16 US gal. electric water heater
- Automatic electric shower drain pumps with time delay
- (2) Electric bilge pumps
- (1) Manual bilge pump
- (1) Electric ice box drain pump

Electronics

- (4) B&G chartplotter, radar, GPS, AIS (class B transceiver)
- B&G high-definition digital radar
- B&G AIS transmitter / receiver
- B&G autopilot
- B&G sailing instruments
- B&G VHF
- (3) B&G Zeus 7" MFD screen in cockpit
- (1) B&G Zeus 16" MFD screen at nav station
- B&G ZC1 remote keyboard
- B&G H50 VHF handset in cockpit
- B&G RS 90 VHF handset at nav station
- B&B Wifi interface
- KVH TV1 direct TV satellite system (sat dome mounted on starboard davit)
- EPIRB
- Fusion stereo with Bose speakers and subwoofer (additional Fusion stereo in master stateroom)

Sails and Rigging

- Set up for shorthanded sailing with optional self-tacking jib, electric furling headsail, electric winches etc.
- Keel-stepped aluminum main mast with (3) sets of aft-swept spreaders
- Self-tacking jib
- Facnor electric genoa furler
- Park Avenue boom

- Retractable steps on mast
- (2) Flag halyards
- Discontinuous stainless steel standing rigging
- Double backstay with turnbuckles
- Rigid boom vang
- Manual genoa furler with drum on deck
- (2) Standup blocks on mainsheet arch
- (2) Genoa tracks with piston-adjusted traveler cars and (2) Genoa sheet return blocks
- Complete running rigging: main halyard, genoa halyard with clutch on mast and cleat, boom topping lift with cleat on mast, mainsheet, (2) genoa sheets, (2) automatic reefing lines, (1) manual
- (11) Line stoppers
- (6) Jamming cleats
- Pre-fitting for spinnaker (6 pad eyes and clutches)
- Windex windvane

WINCHES

- (2) Self-tailing electric genoa sheet winches
- (1) Self tailing electric coachroof winch (port)
- (1) Self-tailing electric coachroof winch (starboard)
- (2) Winch handles: Speedgrip
- (2) Winch handle holders

SAILS

- Hydranet tri-radial cut mainsail
- Hydranet tri-radial self tacking jib
- Cruising spinnaker

- Lazy-jacks - Lazy bag (color: Natural)

Additional Equipment

- 11' AB inflatable tender with aluminum bottom (2017)
- Honda 20 hp outboard engine with electric start (2017)
- Fairclough winter hull cover (covers entire hull down to the waterline) (2017)
- Side boarding ladder
- Dodger
- Cockpit bimini
- 6-person Plastimo life raft
- Helm covers
- Underwater lights
- Fender covers

- Docklines

Exclusions

All personal belongings and all other items not expressly listed in the above inventory are excluded from the sale.

Exclusions

Owner's personal belongings.

Disclaimer

The Company offers the details of this vessel or yacht in good faith but cannot guarantee or warrant the accuracy of this information nor warrant the condition of the vessel. A buyer should instruct his representatives, agents, or his surveyors, to investigate such details as the buyer desires validated. This vessel or yacht is offered subject to prior sale, price change, or withdrawal without notice.

PHOTOS

Aft Stbd. Quarter



Aerial View, Sistership



Main Salon



Main Salon, Stbd.



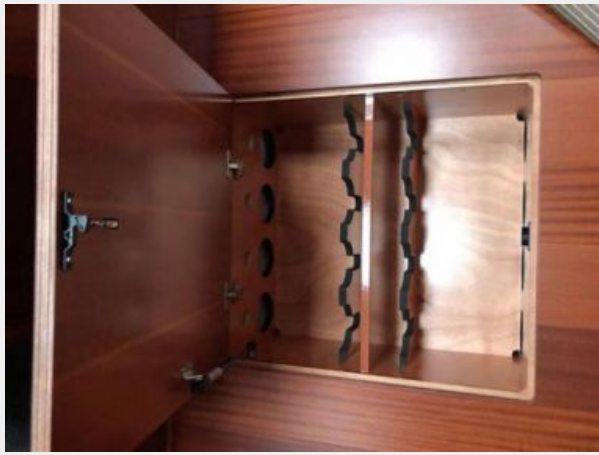
Main Salon, Port



Main Salon, Port Settee



Wine Cellar



Main Salon, Looking Aft



Nav Station



Companionway



Locking Companionway System



Galley



Fridge and Freezer



Additional Fridge, Washer/Dryer



Master Stateroom



Master Stateroom Storage



Master Head



Master Shower



Port Guest Cabin



Port Guest Head/Shower



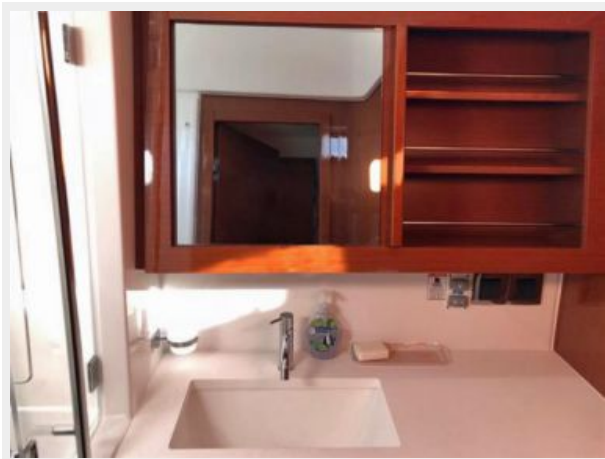
Stbd Guest Cabin



Stbd. Guest Cabin



Stbd. Guest Vanity



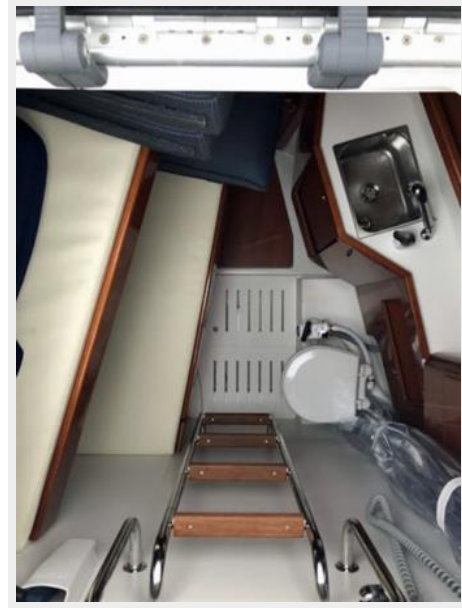
Stbd. Guest Head and Shower



Stbd. Guest Shower



Crew Cabin, from above



Bow



Deck



Mast Base



Mast



Main Sail



Bimini and Dodger



Cockpit Cushions



Cockpit



Cockpit, Sailing



Cockpit, Sistership



Stbd. Stern Quarter



Dinghy



Davits



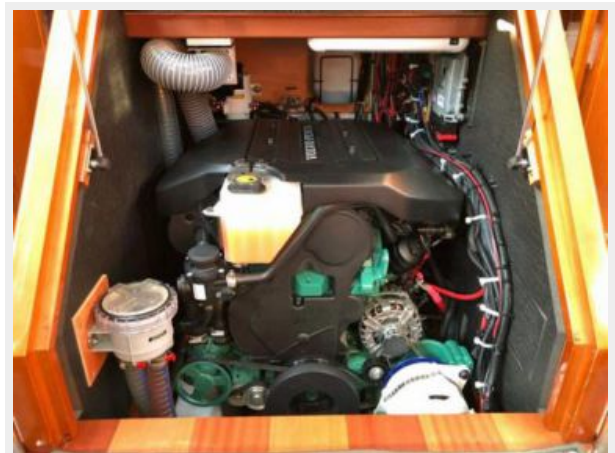
At Anchor, Maine



Stern, at Anchor



Volvo Engine



Volvo Engine



Engine Mounts



Generator



Interior Layout



Deck Layout



CONTACTS

Andrey Shestakov, leading yacht broker of the sales department of Shestakov Yacht Sales Inc. Shestakov Yacht Sales Inc., the official representative of the Miami/Fort Lauderdale FL headquarters.

Contact details

Email: andrey@shestakovyachtsales.com

Web: shestakovyachtsales.com/en/

Telephones

USA: +1(954)274-4435

Office hours

Monday – Saturday: **9:00 - 21:00** EDT

Sunday: **closed**

Address



Harbour Towne Marina, 850 NE 3rd St,
STE 213, Dania, FL 33004