

DOLCE VITA — BENETEAU



Судостроитель: BENETEAU

Год постройки: 2016

Модель: Крейсерская яхта

Цена: ЦЕНА ЯХТЫ ПО ЗАПРОСУ

Местонахождение: United States

Длина общая: 60' 0" (18.29m)

Ширина: 16' 4" (4.98m)

Макс. осадка: 6' 11" (2.11m)

Купить **DOLCE VITA — BENETEAU** а также выбрать подходящую вам яхту из нашего каталога яхт вам поможет опытный яхтенный брокер Андрей Шестаков. На сегодняшний день компания **Shestakov Yacht Sales Inc.** имеет большое количество яхт в собственном списке продаж, а также тесно сотрудничает со всеми крупными яхтенными производителями по всему миру.

Для того чтобы купить яхту **DOLCE VITA — BENETEAU** а также проконсультироваться по любому вопросу связанному с покупкой, продажей, чартером яхт позвоните по телефону **+7(918)465-66-44**.

ОГЛАВЛЕНИЕ

| | |
|-------------------------------|----|
| ОГЛАВЛЕНИЕ | 2 |
| ХАРАКТЕРИСТИКИ | 5 |
| Обзор | 5 |
| Основная информация | 5 |
| Размеры | 5 |
| Скорость, вместимость и масса | 5 |
| Размещение | 6 |
| Корпус и палуба | 6 |
| ПОДРОБНОЕ ОПИСАНИЕ | 7 |
| INTRODUCTION | 7 |
| Construction | 7 |
| Deck | 7 |
| Accommodations | 9 |
| Machinery | 12 |
| Electrical System | 13 |
| Electronics | 14 |
| Sails and Rigging | 14 |
| Additional Equipment | 15 |
| Exclusions | 16 |
| Исключения | 16 |
| Отказ от ответственности | 16 |
| ФОТОГРАФИИ | 17 |
| Aft Stbd. Quarter | 17 |
| Aerial View, Sistership | 17 |
| Main Salon | 17 |
| Main Salon, Stbd. | 17 |
| Main Salon, Port | 17 |
| Main Salon, Port Settee | 17 |

| | |
|---------------------------------|----|
| Wine Cellar | 18 |
| Main Salon, Looking Aft | 18 |
| Nav Station | 18 |
| Companionway | 18 |
| Locking Companionway System | 18 |
| Galley | 18 |
| Additional Fridge, Washer/Dryer | 19 |
| Fridge and Freezer | 19 |
| Master Stateroom Storage | 19 |
| Master Stateroom | 19 |
| Master Head | 20 |
| Master Shower | 20 |
| Port Guest Cabin | 20 |
| Port Guest Head/Shower | 20 |
| Stbd. Guest Cabin | 21 |
| Stbd Guest Cabin | 21 |
| Stbd. Guest Head and Shower | 21 |
| Stbd. Guest Vanity | 21 |
| Stbd. Guest Shower | 22 |
| Crew Cabin, from above | 22 |
| Bow | 22 |
| Deck | 22 |
| Mast Base | 22 |
| Mast | 22 |
| Main Sail | 23 |
| Bimini and Dodger | 23 |
| Cockpit Cushions | 23 |
| Cockpit | 23 |
| Cockpit, Sailing | 23 |

| | |
|-----------------------|----|
| Cockpit, Sistership | 23 |
| Stbd. Stern Quarter | 24 |
| Dinghy | 24 |
| Davits | 24 |
| At Anchor, Maine | 24 |
| Stern, at Anchor | 24 |
| Volvo Engine | 24 |
| Volvo Engine | 25 |
| Engine Mounts | 25 |
| Generator | 25 |
| Interior Layout | 25 |
| Deck Layout | 25 |
| КОНТАКТЫ | 26 |
| Контактная информация | 26 |
| Телефоны | 26 |
| Время работы | 26 |
| Адрес | 26 |

ХАРАКТЕРИСТИКИ

Обзор

DOLCE VITA is a virtually new Beneteau Oceanis 60 – the flagship and queen of the Beneteau Series. Although her model year is 2016, she was not commissioned and her warranties did not start until May, 2017. She has only one summer of sailing on her hull. Unlike a brand new boat, she is fully outfitted and commissioned for the serious cruiser with tender, davits, satellite TV, canvas, spare equipment etc. She has most of the available options and the preferable shoal draft keel, which lets her cruise many places not available to her deep-draft sisters. DOLCE VITA is ideally suited for any type of cruising sailor - with power headsail furling, bow thruster and electric winches, she is easy to handle shorthanded. However, if crew is desired, she has the optional separate crew quarters and head hidden forward of the master stateroom. DOLCE VITA is ready to go cruising in every way! Her warranties are transferable to the next owner, and the RI LLC that owns her is available as well.

Основная информация

Тип судна: Крейсерская яхта

Подкатегория: Sloop

Модельный год: 2016

Год постройки: 2016

Страна: United States

Верх: Dodger

Размеры

Длина общая: 60' 0" (18.29m)

Длина по ватерлинии: 53' 11" (16.43m)

Ширина: 16' 4" (4.98m)

Макс. осадка: 6' 11" (2.11m)

Трапы: 90' 3" (27.51m)

Скорость, вместимость и масса

Водоизмещение: 48600 Pounds

Вместимость воды: 187 Gallons

Объем топливного бака: 159 Gallons

Размещение

Всего кают: 3

Всего коек: 5

Спальные места: 6

Всего ком. состава: 3

Каюты экипажа: 1

Койки экипажа: 2

Спальных мест экипажа: 2

Комм. состав экипажа: 1

Корпус и палуба

Материал корпуса: Fiberglass

Материал палубы: Teak

Цвет корпуса: White

Дизайнер корпуса: Berret Racoupeau
Yacht Design

ПОДРОБНОЕ ОПИСАНИЕ

INTRODUCTION

DOLCE VITA is a virtually new Beneteau Oceanis 60 – the flagship and queen of the Beneteau Series. Although her model year is 2016, she was not commissioned and her warranties did not start until May, 2017. She has only one summer of sailing on her hull. Unlike a brand new boat, she is fully outfitted and commissioned for the serious cruiser with tender, davits, satellite TV, canvas, spare equipment etc. She has most of the available options and the preferable shoal draft keel, which lets her cruise many places not available to her deep-draft sisters. DOLCE VITA is ideally suited for any type of cruising sailor - with power headsail furling, bow thruster and electric winches, she is easy to handle shorthanded. However, if crew is desired, she has the optional separate crew quarters and head hidden forward of the master stateroom. DOLCE VITA is ready to go cruising in every way! Her warranties are transferable to the next owner, and the RI LLC that owns her is available as well.

Construction

- Designed to CE Certification
- Monolithic hull in polyester
- Monolithic structural hull liner laminated and bonded to the hull
- Deck in balsa and glass fiber sandwich covered in diamond-point-type non-slip surface
- Deck hull joint bonded and screwed, with solid wood toe rail
- Cast iron keel fixed with bolts and stainless steel backing plates
- Rudder hung with glass compound stock
- White colored hull, gray metal hull decoration

Deck

- Custom dinghy davits
- Self-draining chain locker
- Hatch access to chain locker in sail locker / forepeak cabin
- Stainless steel bow fitting with (2) anchor rollers
- Asymmetric spinnaker tack point - stainless steel bobstay
- 24 V - 2000 W vertical electric windlass with remote control
- (8) Aluminum mooring cleats
- Stainless steel deck line protection

STEERING

- Lewmar torque rod steering system at twin pedestals with 44” Mini-Maxi stainless steel wheels

- (2) Brown suede leather wheel covers

SAFETY ON DECK

- (1) Open stainless steel forward pulpit - step
- (2) Stainless steel aft pushpits
- (1) Ring lifebuoy bracket
- (1) Outboard engine bracket
- (2) Flag mounts welded on aft pushpit
- Double lifelines and stainless steel stanchions - Access to port and starboard in lifelines
- (2) Stainless steel handrails on deck
- (2) Stainless steel handrails on fixed arch
- (2) Stainless steel grabrails on cockpit coaming
- (2) Stainless steel handrails on helm seats

COCKPIT

- Self-bailing cockpit, natural solid wood deck
- (2) Lockers under helm seat with gas cylinder opening
- (2) Rope lockers - step plate in front of steering station
- Natural solid wood slatted cockpit benches
- (2) Steering wheel consoles with stainless steel steering wheels
- (2) Helm seats
- Deck plate for access to tiller system
- (1) Emergency tiller
- Engine throttle and control panel to starboard
- Solid wood cockpit table
- (2) Flaps - guy wash boards
- Glove boxes
- Bottle holder
- 12 V power outlet
- Lamp with shade
- Switch cover
- (2) Waterproof speakers below arch
- LED lamps under arch
- Folding companionway door and PMMA sliding companionway hatch with electric locking system

AFT COCKPIT

- Open access protected by stainless steel lifelines
- (1) Stainless steel door
- Natural solid wood sole on swim platform
- (1) Life raft locker on starboard side with gas cylinder opening

TENDER ROOM

- (1) Gas locker on port side with gas cylinder opening
- (2) Watertight lockers at the bottom of the dinghy storage space
- Central storage compartment at bottom of dinghy storage space
- Stainless steel retractable swim ladder with solid wood steps
- Hot and cold cockpit shower
- Shore power supply
- Lounge area behind the helm
- Ladder to access swim platform (articulating)

Accommodations

GENERAL DESCRIPTION

- Woodwork: Alpi mahogany
- Parquet-type laminated floors
- Cushions
- Ceiling panels, bulkhead and hull liner covered with PVC fabric
- All heads can switch back and forth from using fresh to salt water

COMPANIONWAY

- Powered entrance companionway system with (2) remote controls
- Wooden companionway with steps in molded wood with non-slip surface
- Stainless steel leather-covered stairway handrails
- Canopy with shade

SALON

- Samsung 40" LED flat screen TV on lift, retracts behind settee
- Electric blinds
- U-shaped salon bench with fabric upholstery
- Retractable central seat with fabric upholstery
- Swivel foldaway salon wood table with lacquered tabletop with inlay, and integrated bar
- Sofa with armrests
- Cupboard units - cubbyhole lockers and storage along the hull
- Storage space under seats and sofa
- Bottle cabinet behind port settee
- (1) Panoramic glazing with blackout blinds / mosquito screens
- (2) Hull portholes with blackout curtains
- (2) Fixed deckhouse side windows with pleated blinds
- (4) Opening portholes in fixed side windows

CHART TABLE - STARBOARD

- Control console with flap, glove boxes and storage with molded wood beading

- Navigator seat with cushion and backrest
- Hinged backlit electrical panel
- Navigation instrument panel
- Wet locker

GALLEY - PORTSIDE

- U-shaped galley
- Synthetic resin worktop
- Rectangular stainless steel sink
- Cutting board of solid wood
- (1) Shower hose mixer-tap for hot/cold water
- (1) Gas stove with (3) burners, stainless steel grill and oven on gimbal mountings with stainless steel protection handrail
- Refrigeration unit, front-opening with 2-speed compressor
- Freezer unit, top-opening
- Icemaker
- Microwave
- Dishwasher
- Washer/Dryer
- Drawers with slides and buffers, cupboard units, equipped lockers (shelves with fiddles for plate storage, tea towel holder, bottle holder)
- Integral trash container
- (1) Opening porthole with blackout curtain

STARBOARD AFT CABIN

- (2) Single beds, can be joined to make a double bed
- Marine mattresses
- Hanging locker
- Cubbyhole lockers
- Glove boxes
- (1) Dressing table with mirror
- Hallway mirror
- (1) Opening porthole on cockpit with blackout curtain
- (1) Opening porthole with blackout curtain
- (1) Window to transom with blackout curtain
- (1) Opening porthole towards transom

STARBOARD AFT HEAD

- Private head compartment accessible from starboard aft cabin
- Separate stall shower
- Electric Jabsco marine toilet, plumbed for both salt and fresh water
- (1) Rigid holding tank (21 US gal.)

- Sink with synthetic resin worktop
- Mixing tap hot / cold water
- Mirror
- Cubbyhole locker
- (2) Opening portholes with curtain

PORT AFT CABIN

- (1) Double bed
- Marine mattress
- Hanging locker
- Cubbyhole lockers
- Glove boxes
- Hallway mirror
- (1) Opening porthole on cockpit with blackout curtain
- (1) Opening porthole with blackout curtain
- (1) Window to transom with blackout curtain
- (1) Opening porthole towards transom

PORT AFT HEAD

- Head accessible from the port aft cabin and from the salon
- Separate stall shower
- Electric Jabsco marine toilet, plumbed for both salt and fresh water
- (1) Rigid holding tank (21 US gal.)
- Sink with synthetic resin worktop
- Mixing tap hot / cold water
- Mirror
- Toilet accessories
- Cubbyhole locker

MASTER STATEROOM

- Island queen berth
- Marine mattress
- Samsung 28" LED flat screen TV
- Fusion stereo (separate from main system)
- Night tables
- Cubbyhole lockers
- Drawers
- Glove boxes
- Lockers under the bed (gas cylinder opening)
- Safe under bed
- Wardrobe with cupboard and shoe cabinet
- Dressing table with mirror and removable seat

- Hallway mirror
- (2) Hull portholes with blackout curtains
- (3) Opening hatches with blackout blind / mosquito screen

MASTER HEAD

- Private washroom accessible from forward cabin
- Separate stall shower
- Electric Jabsco marine toilet (plumbed for both salt and fresh water)
- Sink with synthetic resin worktop
- Mixing tap hot / cold water
- (2) Mirrors
- Toilet accessories
- Cubbyhole lockers
- (1) Opening hatch with sunshades/mosquito screen

FOREPEAK CREW CABIN

- Access through deck hatch (with ventilation): stainless steel ladder, solid wood steps
- Headroom: 6'-4"
- (2) Bunk berths
- Foam mattresses
- Hanging locker
- Storage locker
- Cupboard
- Manual toilet
- Sink
- Showerhead mixer tap, hot / cold water
- Shower tray

Machinery

- Volvo 150 hp diesel engine
- Engine electrical control and panel in the starboard cockpit
- Engine compartment: Foam soundproofing and ventilation with (1) air intake and (1) air outlet
- (1) Alternator 12 V, 120 amps
- (1) Alternator 24 V, 80 amps
- Stainless steel shaft line
- 3-Blade folding propeller
- Engine access through companionway (opening near gas cylinders)
- Engine access through passageway and aft cabins
- Air conditioning throughout the interior

Electrical System

- Cummins 11 kW generator
- 12 V Circuit
- 24 V Circuit
- 230 V Circuit
- Ducts with messenger lines for electric cables or future upgrades
- (1) 230 V electrical panel: breaker - voltmeter
- (1) 115 V electrical panel: breaker - voltmeter
- (1) 12 V / 24 V electrical panel: breaker - voltmeter - water gauge - fuel gauge - 24 V charging current and consumption current measurement
- Electrical equipment controls located in aft port cabin

12 V CIRCUIT

- (1) 12 V - 110 amp engine battery
- Battery switch in port passageway
- 12 V load balancer
- (1) 12 V - 25 amp engine battery charger
- (2) 12 V power outlets: (1) at chart table, (1) at cockpit table

24 V CIRCUIT

- Electric windlass with chain counter
- Pumps
- Navigation lights
- Lighting
- Refrigeration units
- Bow thruster
- (1) 24 V - 280 amp service battery set: (4) 12 V - 140 amp batteries
- Battery switch (port passageway)
- 24 V load balancer
- (1) 24 V - 60 amp engine battery charger

115 V CIRCUIT

- Lighting
- Interior lights LED
- Overhead lights
- Indirect lighting
- Adjustable wall-mounted luminaires and reading lamps
- Courtesy lamps in wardrobes

OUTSIDE LIGHTING

- Incandescent: Deck light at mid mast, spreaders spotlight, lamp on cockpit table with shade

- LED lamps under arch
- LED navigation lights with controls on chart table and on starboard helm
- (1) Mooring light at mast top
- (1) Automatic steaming light at mid mast
- (1) Port navigation light
- (1) Starboard navigation light on bow
- (1) Sternlight on pushpit to starboard

ADDITIONAL

- 16 US gal. electric water heater
- Automatic electric shower drain pumps with time delay
- (2) Electric bilge pumps
- (1) Manual bilge pump
- (1) Electric ice box drain pump

Electronics

- (4) B&G chartplotter, radar, GPS, AIS (class B transceiver)
- B&G high-definition digital radar
- B&G AIS transmitter / receiver
- B&G autopilot
- B&G sailing instruments
- B&G VHF
- (3) B&G Zeus 7" MFD screen in cockpit
- (1) B&G Zeus 16" MFD screen at nav station
- B&G ZC1 remote keyboard
- B&G H50 VHF handset in cockpit
- B&G RS 90 VHF handset at nav station
- B&B Wifi interface
- KVH TV1 direct TV satellite system (sat dome mounted on starboard davit)
- EPIRB
- Fusion stereo with Bose speakers and subwoofer (additional Fusion stereo in master stateroom)

Sails and Rigging

- Set up for shorthanded sailing with optional self-tacking jib, electric furling headsail, electric winches etc.
- Keel-stepped aluminum main mast with (3) sets of aft-swept spreaders
- Self-tacking jib
- Facnor electric genoa furler
- Park Avenue boom

- Retractable steps on mast
- (2) Flag halyards
- Discontinuous stainless steel standing rigging
- Double backstay with turnbuckles
- Rigid boom vang
- Manual genoa furler with drum on deck
- (2) Standup blocks on mainsheet arch
- (2) Genoa tracks with piston-adjusted traveler cars and (2) Genoa sheet return blocks
- Complete running rigging: main halyard, genoa halyard with clutch on mast and cleat, boom topping lift with cleat on mast, mainsheet, (2) genoa sheets, (2) automatic reefing lines, (1) manual
- (11) Line stoppers
- (6) Jamming cleats
- Pre-fitting for spinnaker (6 pad eyes and clutches)
- Windex windvane

WINCHES

- (2) Self-tailing electric genoa sheet winches
- (1) Self tailing electric coachroof winch (port)
- (1) Self-tailing electric coachroof winch (starboard)
- (2) Winch handles: Speedgrip
- (2) Winch handle holders

SAILS

- Hydranet tri-radial cut mainsail
- Hydranet tri-radial self tacking jib
- Cruising spinnaker

- Lazy-jacks - Lazy bag (color: Natural)

Additional Equipment

- 11' AB inflatable tender with aluminum bottom (2017)
- Honda 20 hp outboard engine with electric start (2017)
- Fairclough winter hull cover (covers entire hull down to the waterline) (2017)
- Side boarding ladder
- Dodger
- Cockpit bimini
- 6-person Plastimo life raft
- Helm covers
- Underwater lights
- Fender covers

- Docklines

Exclusions

All personal belongings and all other items not expressly listed in the above inventory are excluded from the sale.

Исключения

При продаже яхты исключаются личные вещи владельца.

Отказ от ответственности

Компания предоставляет описание судна или яхты добросовестно, но не может гарантировать точность этой информации, а также не ручается за техническое состояние. Покупатель должен проинструктировать своих агентов или оценщиков исследовать представленную информацию более подробно, по собственному желанию. Продажа судна или яхты, изменение цены или снятие с продажи будет происходить без предварительного уведомления.

ФОТОГРАФИИ

Aft Stbd. Quarter



Aerial View, Sistership



Main Salon



Main Salon, Stbd.



Main Salon, Port



Main Salon, Port Settee



Wine Cellar



Main Salon, Looking Aft



Nav Station



Companionway



Locking Companionway System



Galley



Fridge and Freezer



Additional Fridge, Washer/Dryer



Master Stateroom



Master Stateroom Storage



Master Head



Master Shower



Port Guest Cabin



Port Guest Head/Shower



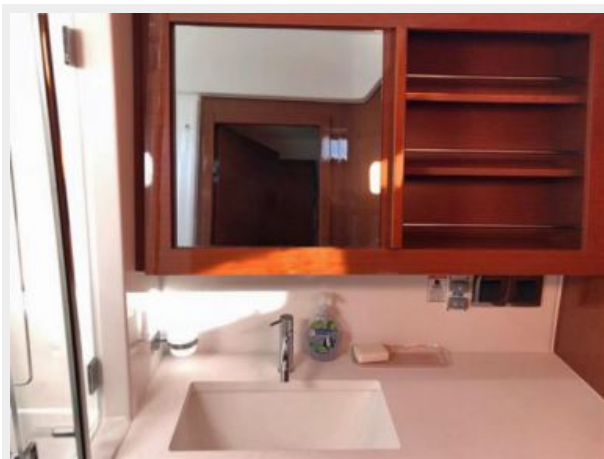
Stbd Guest Cabin



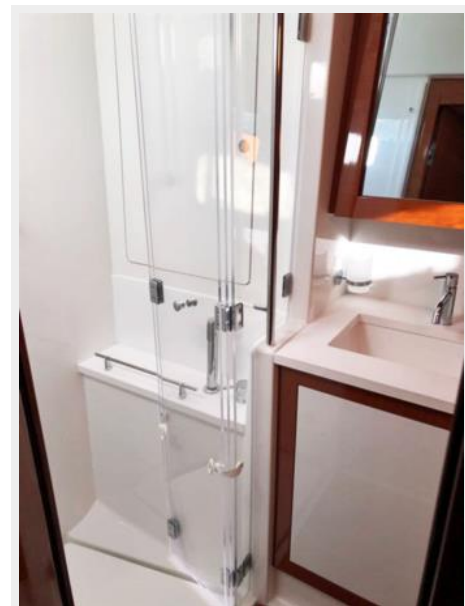
Stbd. Guest Cabin



Stbd. Guest Vanity



Stbd. Guest Head and Shower



Stbd. Guest Shower



Crew Cabin, from above



Bow



Deck



Mast Base



Mast



Main Sail



Bimini and Dodger



Cockpit Cushions



Cockpit



Cockpit, Sailing



Cockpit, Sistership



Stbd. Stern Quarter



Dinghy



Davits



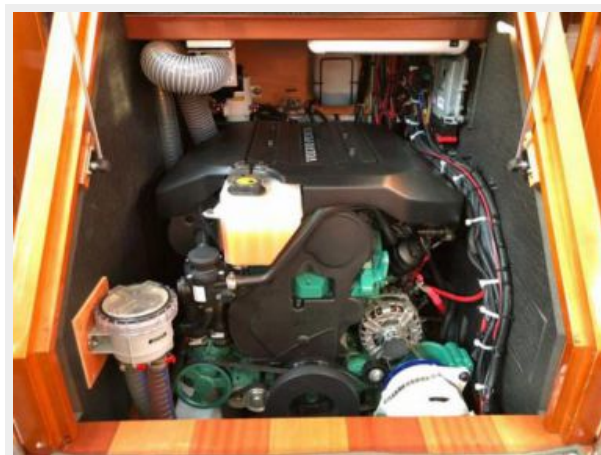
At Anchor, Maine



Stern, at Anchor



Volvo Engine



Volvo Engine



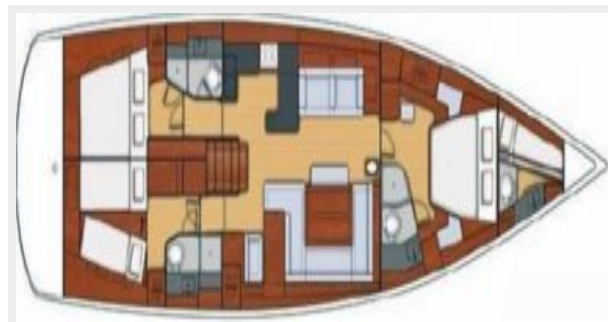
Engine Mounts



Generator



Interior Layout



Deck Layout



КОНТАКТЫ

Андрей Шестаков (Andrey Shestakov) – ведущий яхтенный брокер отдела продаж яхт и судов компании Shestakov Yacht Sales Inc. Официальный представитель Shestakov Yacht Sales Inc. для русскоговорящих клиентов в центральном офисе компании в Майами/Форт Лодердейл/Флорида/США.

Контактная информация

Email: andrey@shestakovyachtsales.com

Web: shestakovyachtsales.com

Телефоны

Краснодарский край: **+7(918)465-66-44**

США, Майами, Флорида: **+1(954)274-4435**

Время работы

Понедельник – Суббота: **9:00 - 21:00**
EDT

Воскресенье: **Закрито**

Адрес



Harbour Towne Marina, 850 NE 3rd St,
STE 213, Dania, FL 33004