

GROWLER — ANDREWS



Builder: ANDREWS

Year Built: 1994

Model: Cruising/Racing Sailboat

Price: PRICE ON APPLICATION

Location: United States

LOA: 40' 0" (12.19m)

Beam: 13' 0" (3.96m)

Max Draft: 8' 4" (2.54m)

Our experienced yacht broker, Andrey Shestakov, will help you choose and buy a yacht that best suits your needs **Growler — ANDREWS** from our catalogue. Presently, at Shestakov Yacht Sales Inc., we have a wide variety of yachts available on our sale's list. We also work in close contact with all the big yacht manufacturers from all over the world.

If you would like to buy a yacht **Growler — ANDREWS** or would like help answering any questions concerning purchasing, selling or chartering a yacht, please call **+1(954)274-4435**

TABLE OF CONTENTS

TABLE OF CONTENTS	2
SPECIFICATIONS	3
Overview	3
Basic Information	3
Dimensions	4
Speed, Capacities and Weight	4
Accommodations	4
Hull and Deck Information	4
DETAILED INFORMATION	5
Sail Inventory	5
Exclusions	5
Disclaimer	5
PHOTOS	6
CONTACTS	14
Contact details	14
Telephones	14
Office hours	14
Address	14

SPECIFICATIONS

Overview

A PROVEN WINNER

StFYC Big Boat Series, StFYC, 2nd Class B

Long Beach Race Week, LBYC, 2nd PHRF Class A

Kenwood Cup, RHORC, 1st Class C, 1st Overall

SCORA Championships, LAYC Harbor Series, 1st IMS

PHRF Rating - 3 Buoys, 15 for both Random leg and long distance

Kevlar and Foam Core Racing Yacht

Bottom Race Faired and Painted with Super Fast Pettit Black Widow Racing Paint in 2017

Sparcraft Aluminum rig and boom with rod rigging

Spectra Backstay

Spectra Checkstay's

PBO Running Backs

Carbon Spinnaker Pole

3 Burner Cooktop

Basic Information

Category: Cruising/Racing Sailboat

Model Year: 1994

Year Built: 1994

Country: United States

Dimensions

LOA: 40' 0" (12.19m)

LWL: 35' 9" (10.90m)

Beam: 13' 0" (3.96m)

Max Draft: 8' 4" (2.54m)

MFG Length: 40' 11" (12.47m)

Speed, Capacities and Weight

Displacement: 13000 Pounds

Water Capacity: 35 Gallons

Holding Tank: 2 Gallons

Fuel Capacity: 25 Gallons

Accommodations

Total Cabins: 1

Total Berths: 4

Total Heads: 1

Hull and Deck Information

Hull Material: Fiberglass

DETAILED INFORMATION

Sail Inventory

- Main Ullman 3DL 2001 New
- Main Quantum Farr 40 OD 2011 V Good
- #1L North Kevlar Laminate 2000 Fair
- #1H North Kevlar Laminate 2000 Fair
- #1H North Poly Laminate 1994 Tired
- #2 Ullman 3DL 2001 New
- #3 North Kevlar Laminate 2000 Good
- #4 North Poly Laminate 1994 New
- Spinnaker Ullman .5oz Run 2001 New
- Spinnaker Ullman .5oz VMG 2001 New
- Spinnaker Ullman .75 AP 2001 New
- Spinnaker North 1.5 AP 1994 Good
- Spinnaker North .5 AP 1994 Fair
- Spinnaker North .6 Run 1994 Fair
- Spinnaker North .6 VMG 1994 Fair
- Spinnaker North .75 AP 1994 Fair

Exclusions

Owner's personal belongings.

Disclaimer

The Company offers the details of this vessel or yacht in good faith but cannot guarantee or warrant the accuracy of this information nor warrant the condition of the vessel. A buyer should instruct his representatives, agents, or his surveyors, to investigate such details as the buyer desires validated. This vessel or yacht is offered subject to prior sale, price change, or withdrawal without notice.

PHOTOS

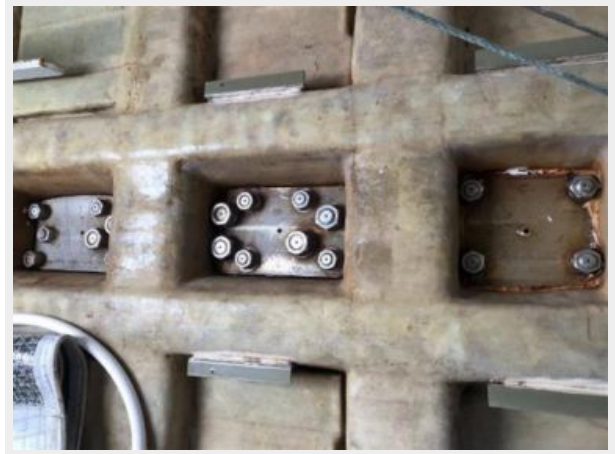


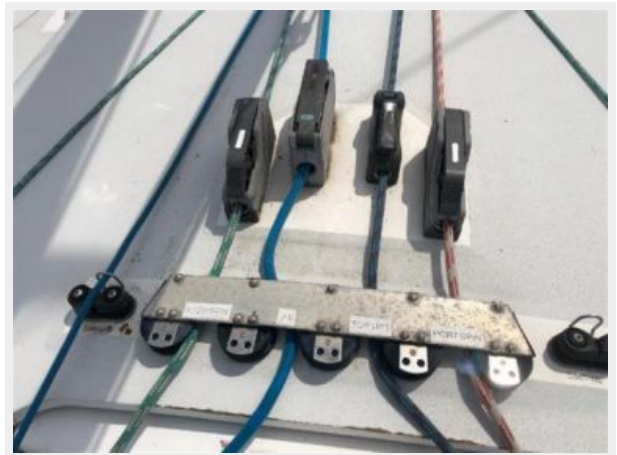
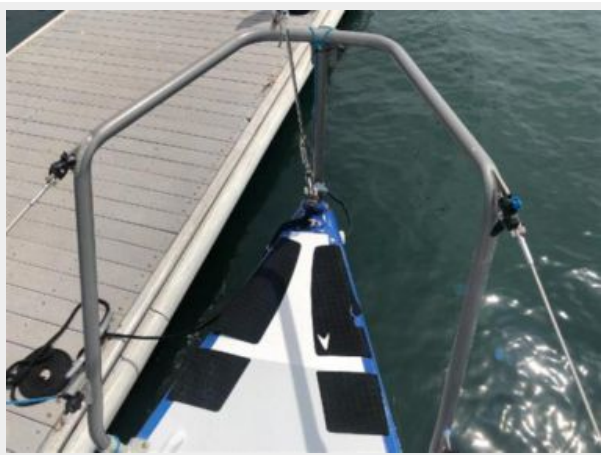
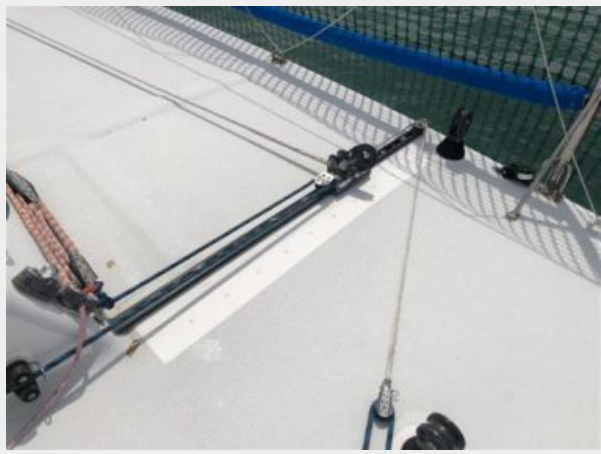














CONTACTS

Andrey Shestakov, leading yacht broker of the sales department of Shestakov Yacht Sales Inc. Shestakov Yacht Sales Inc., the official representative of the Miami/Fort Lauderdale FL headquarters.

Contact details

Email: andrey@shestakovyachtsales.com

Web: shestakovyachtsales.com/en/

Telephones

USA: +1(954)274-4435

Office hours

Monday – Saturday: **9:00 - 21:00** EDT

Sunday: **closed**

Address



Harbour Towne Marina, 850 NE 3rd St,
STE 213, Dania, FL 33004