

SILVERSUN — CATALINA



Builder: CATALINA

Year Built: 2008

Model: Cruising/Racing Sailboat

Price: PRICE ON APPLICATION

Location: United States

LOA: 37' 0" (11.28m)

Beam: 13' 0" (3.96m)

Max Draft: 6' 10" (2.08m)

Our experienced yacht broker, Andrey Shestakov, will help you choose and buy a yacht that best suits your needs **Silversun — CATALINA** from our catalogue. Presently, at Shestakov Yacht Sales Inc., we have a wide variety of yachts available on our sale's list. We also work in close contact with all the big yacht manufacturers from all over the world.

If you would like to buy a yacht **Silversun — CATALINA** or would like help answering any questions concerning purchasing, selling or chartering a yacht, please call **+1(954)274-4435**

TABLE OF CONTENTS

TABLE OF CONTENTS	2
SPECIFICATIONS	5
Overview	5
Basic Information	6
Dimensions	6
Speed, Capacities and Weight	6
Accommodations	6
Hull and Deck Information	7
Engine Information	7
DETAILED INFORMATION	8
Exterior Description and Features	8
Interior Description and Features	9
Construction	11
Exclusions	12
Disclaimer	12
PHOTOS	13
Port View	13
Bow	13
Bow 2	13
Cabintop	13
Port Sidedeck	13
Dodger	13
Cockpit	14
Cockpit 2	14
Cockpit Table	14
Helm	14
Helm Electronics	14
Gauges and Bow Thruster Control	14

Electronics	15
Raymarine e95 with Radar	15
Stern	15
Transom	15
Starboard Foredeck	15
Port Foredeck	15
Bow	16
Anchor Locker	16
Anchor Roller	16
Boom & Mast	16
Standing Rigging	16
Interior Layout	16
Manufacturer Provided Image	17
Manufacturer Provided Image	17
Salon	17
Salon 2	17
Galley	17
Port Settee	18
Salon Table Down	18
Salon Table 2	18
Salon - Convertible Bed	18
Salon - Starboard Side	18
Salon - Starboard Settee	18
Nav Station	19
Nav Station Panel	19
Forward Cabin 2	19
Forward Cabin	19
Head (two doors to access)	20
Aft Cabin	20

Head 2	20
Engine	20
Engine 2	21
Engine Hours	21
Manufacturer Provided Image	21
Manufacturer Provided Image	21
CONTACTS	22
Contact details	22
Telephones	22
Office hours	22
Address	22

SPECIFICATIONS

Overview

Just Listed in October 2017! Lots of Upgrades, including Bow Thruster and new Electronics

This is one of the most spacious 37 footers you will find for sale! The two-cabin layout offers plenty of space and comfort. The salon is very spacious, with a fold-down main table (a couple can also use the two-seat settee to Port with a small table), a convertible settee to sleep two more guests, a spacious galley with two fridge/freezers, lots of counter space and storage. Forward, there is a great owner's cabin with island bed, plenty of storage, and direct access to the spacious head, which has a new electric head and separate shower compartment. This well-cared for yacht is available to see at Elliott Bay Marina by appointment.

Features Include:

- **Custom Bow Thruster by Lewmar,**
- **Current-generation Raymarine Chartplotter and Radar** (e95 Hybrid Touchscreen),
- **Autopilot**, include remote,
- **Webasto Diesel Heater,**
- **40 HP Yanmar Engine,**
- **Newer Batteries and Charger,**
- **Newer Dometic Electric Head,**
- Very clean yacht, recently detailed.

Reviews:

"With a rig designed large enough for light-air sailing and gear that will stand up in a breeze, the 375 is laid out to take a family or crew to sea." - **Cruising World**

"Performance measurements showed us easily hitting 5 knots in 40 degrees apparent in 8 knots of breeze. Nice! Above decks, the boat's visibility for steering was excellent. [...] The boat was easy to steer from the side and there was tons of space aft of the wheel. [...] The cockpit table is huge when folded out and the cockpit itself is deep, safe and large. Storage is far from lacking here; there's lots of it in the lockers accessible from the cockpit[...]. Under power, the 40 HP Yanmar pushes this boat effortlessly, backed up by the robust three-bladed prop that bites well in forward and reverse. All in all, the Catalina 375 is another winner in this year's crop of new boats. It is great value and no doubt will live up to the tradition of longevity and value offering Catalina is known for." - **Canadian Yachting**

"Catalina designs always seem to get proportions down below just right. The galley counter top is angled to provide a little extra room for the "chairs" (comfy individual seats with a table between them) that occupy the starboard side of the saloon. The long, straight settee on the port side is plenty long enough to stretch out on, and the large hinged dining table retracts out of the

way and is stored on the main bulkhead. [...] Over all, the saloon space is both airy and inviting. Douglas shares my belief that a forward cabin with a large opening hatch makes an ideal master cabin. The partial walk-around bunk is adult-sized, and there is plenty of stowage in cabinets, a hanging locker, and beneath the bunk. [...] Instead of jamming two heads into a boat this size, Douglas wisely opted for one big head (adjacent to the forward cabin) with a large shower stall. The accommodation plan works well, and I'd have no trouble spending a week or more aboard."
- Sail Magazine DYSID:3148030

Basic Information

Category: Cruising/Racing Sailboat

Sub Category: Cruising Sailboat

Model Year: 2008

Year Built: 2008

Country: United States

Dimensions

LOA: 37' 0" (11.28m)

LWL: 34' 5" (10.49m)

Beam: 13' 0" (3.96m)

Max Draft: 6' 10" (2.08m)

MFG Length: 38' 6" (11.73m)

Speed, Capacities and Weight

Displacement: 15500 Pounds

Water Capacity: 97 Gallons

Holding Tank: 31 Gallons

Fuel Capacity: 40 Gallons

Accommodations

Total Cabins: 2

Total Berths: 9

Total Heads: 1

Hull and Deck Information

Hull Material: Fiberglass

Hull Configuration: Monohull

Engine Information

Engines: 1

Manufacturer: Yanmar

Model: 4JH3E

Engine Type: Inboard

Fuel Type: Diesel

DETAILED INFORMATION

Exterior Description and Features

Deck Equipment:

- **Mooring** - CQR 14 Lb. anchor with 75 Ft of 3/8" galvanized link chain and 175 Ft of 3/4" Nylon rode, Maxwell Electric Windlass with foot up/down switches, two anchor rollers.
- **Hatches** - 5 foredeck and cabintop hatches
- **Opening Ports** - 4 opening ports on each side, one long non-opening window on each side.
- **Swim Ladder** - Fold down stainless steel ladder on transom

Hull / Underbody Features:

- **Bow Thruster** - Lewmar (**Installed 2009**)
- **Propeller** - Fixed, bronze, 3 blade.
- **Shaft** - Stainless steel alloy, 1 1/8" diameter. Rubber cutlass bearing.
- **Rudder**: Spade rudder is fiberglass over high density foam core with stainless steel stock and stainless steel internal framework.
- **Stuffing Box**: Dripless shaft seal.
- **Bottom Last Painted**: 2015. Zincs changed Nov. 2017 and diver reported paint in good condition.
- **Thru-hulls/Sea Valves**: Thru-hull fittings at and above the waterline are marine grade plastic. Sea valves are Marlon sea cocks.
- **Zinc Anodes**: Owner reports that the zincs are renewed every four (4) months by a dive service. (Changed last Nov 2017).
- **Guards**: Port and stbd full length aluminum extrusions with vinyl rubber inserts.

Rig:

- **Mast and Boom** - Made by Selden and are aluminum. 2 spreader mast, stepped on cabin top with compression post beneath.
- **Hydraulic Backstay Adjuster** - Sailtex model 10SI
- **Head Sail** - Genoa by Ballard Sails, Estimated 125% size, with blue Sunbrella edge for sun protection (**Replaced 2014**)
- **Main Sail** - Roller-furling with vertical battens, likely original, and good condition

Cockpit Features:

- **Dodger** - Blue Sunbrella with hard plastic panels, in great condition (**Panels replaced Late-2015**)
- **Folding Helm** - with leather cover, by Lewmar
- **Table with fiberglass leaves**
- **Large Lazarette Storage** to Port. Can fit fenders, extra sail, etc.

- **Two deep storages** in the aft corners
- **Propane Locker** with one tank
- **Blue Sunbrella Cover for Helm and Table**
- **Stern corner seating.** Elevated with padded seating
- **Newer blue Dodger,** in excellent condition
- **Bags for stowage of companionway lines.**
- **Hot/Cold Water shower**
- **BBQ** - Magma with Cover, on stern railing.
- **Safety** - Yellow life ring and Lifesling 2, life jackets

Electronics at the Helm:

- **Chartplotter with Radar** - Raymarine e95 Hybrid Touch (Current generation)
- **Fishfinder / Backup Chartplotter** - Lowrance Hook 4
- **Tri-Data Repeater (Depth/Speed/Trip)** - Raymarine ST 60+
- **Wind Direction/Speed Indicator** - Raymarine ST 60+
- **Autopilot Control** - Raymarine ST6002
- **Autopilot Remote** - Raymarine S100
- **Icom VHF Ram** - CommanderMic II
- **Bow Thruster controls** - Lewmar
- **Stereo Remote Control** - Jensen
- **Cockpit Speakers**
- **Compass** - Ritchie
- **Gauges** - Engine RPM, Water Temperature, Fuel Level, Battery Charge
- **Warning Light and Audible Alarm** for High Water Temp, Low Oil Pressure

Interior Description and Features

Salon:

- **Description - From Cruising World:** *"[To Port] there's an outboard-facing nav desk and electrical panel, then a full-length settee with an ingenious fold-down table mounted on the forward bulkhead. A stainless-steel tube frame opens from beneath the table and can be extended so the top can be opened up to feed a crowd or kept small for an intimate dinner. A fold-up bench for additional dinner seating is stored, when not in use, at the head of the aft berth. A couple might keep the table up, however, and simply eat at the small table and built-in chairs opposite the settee, to starboard."* Plenty of storage, from cabinetry above the settees, some bookshelves, and a large hanging locker forward. Good ventilation from two opening hatches and several opening ports.
- **Diesel Heat** - Outlet near galley. By Webasto.
- **Fold down Salon Table** - Has two sections to accommodate 2-6 guests, and a fold-up bench.
- **Port settee converts to bed for two**
- **Flat Screen TV** - 24" Axxess LED TV with DVD player Located to Starboard, on an arm, can

face the dining settee or galley (Replaced 2017)

Galley:

- **Description** - U-shaped galley is to starboard by companionway. Good ventilation, lots of counter space.
- **Stove & Oven** - Princess propane 2 burner-stove, with Lid
- **Refrigerator** - Dometic forward-facing fridge
- **Refrigerator/Freezer** - large drop-in combo unit
- **Microwave** - Countour
- **Double sink** - Stainless Steel
- **Storage** - 3 large eye level cabinets, one spacious drop in storage, 5 drawers

Nav Station:

- **AC and DC Panels** (See "Electrical")
- **VHF** - Icom IC-M422
- **Stereo** - Jensen CD/AM/FM/Aux
- **Water and Holding Tank Monitors**
- **Temperature and Humidity Gauges** - Weems & Plath
- **Weather Gauge** - Weems & Plath
- **Clock** - Weems & Plath

Forward/Master Cabin:

- **Island Berth** - very easy to climb unto from either side
- **Reading lights**
- **Overhead lights**
- **Teak wood panneling on walls**
- **Two Hanging Lockers**
- **Drawers Underneath bed**
- **Direct access to Head**
- **Opening Hatch for ventilation**

Aft Cabin:

- **Large Bed for two**
- **Good storage**
- **Opening Hatch above bed for ventilation, side opening ports**
- **Reading and Overhead lights**

Head:

- **Electric Dometic Head**
- **Separate shower compartment**
- **Holding Tank Gauge** - Digital, located at Nav Station

Electrical:

- **DC Distribution Panel (Nav Station)** - With breakers, automatic bilge pump, battery tests, Amp and Voltage gauges, USB Charger
- **AC Panel (Nav Station)** - 30 Amp shore power breaker, Outlet breakers, Water Heater Breaker, Battery Charger Breaker, AC Voltage gauge, Reverse Polarity Light
- **Charger (Under Nav Station)** - Charles SolidPower 30Amp Battery Charger, **(Replaced 2016)**
- **House & Engine Start Batteries** - 1 Group 24 AGM (Start) and 2 4D (House), rem **(Replaced 3/2017)**
- **Shore Power** - Smart Plug 30 Amp shore power receptacle with 50 Ft. Smart plug heavy duty shore power cable.
- **Galvanic Isolator** - ProMarine ProSafe, 30 Amp.

Mechanical:

- **Engine - Yanmar model 3JH4E, 3 cylinder, 40 HP.**
- **Latest engine maintenance 3/2017. Servicing included:**
- **Change Impeller and belt,**
- **Change Transmission Oil,**
- **Change Engine Oil and Filter,**
- **Change primary and secondary fuel filter,**
- **Test Coolant,**
- **Check alignment,**
- **Pull Oil Sample.**

Construction

- **Hull:** Solid Fiberglass hand layup.
- **Hull to Deck Joint:** Lapped flanges, "Shoebox Style" bonded/sealed with marine grade polyurethane adhesive (3M-5200) and bolted with 1/4" stainless steel bolts.
- **Ballast Keel:** Lead (5,200 lb.) encapsulated in the fiberglass fin keel. Secured with 7/8" diameter stainless steel keel bolts. Keel bolts appeared good.
- **Hull Frame/Grid:** Fiberglass grid structure is bonded/glassed to the interior hull. Full length marine grade aluminum angle (approx. 5" x 5" x 5/16" angle) is bonded to the hull port and stbd near the waterline.
- **Bulkheads:** Marine plywood, tabbed with fiberglass.
- **Cabin Interior:** Molded fiberglass liner/module glassed in place then finished out with trim and joinerwork.
- **Exterior Decks and Cabin Top:** Molded fiberglass with Balsa core. Marine plywood is substituted at deck equipment foundations and high load zones and penetrations. Aluminum backing plates used where hardware/fittings are mounted to the hull. 6
- **Cabin Sides:** Fiberglass, molded lay-up.
- **Toe Rail:** Molded fiberglass, part of deck module.

Exclusions

Owner's personal belongings.

Disclaimer

The Company offers the details of this vessel or yacht in good faith but cannot guarantee or warrant the accuracy of this information nor warrant the condition of the vessel. A buyer should instruct his representatives, agents, or his surveyors, to investigate such details as the buyer desires validated. This vessel or yacht is offered subject to prior sale, price change, or withdrawal without notice.

PHOTOS

Port View



Bow



Bow 2



Cabintop



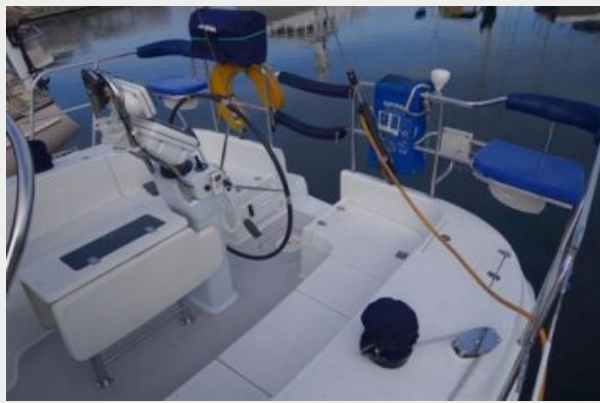
Port Sidedeck



Dodger



Cockpit



Cockpit 2



Cockpit Table



Helm



Helm Electronics



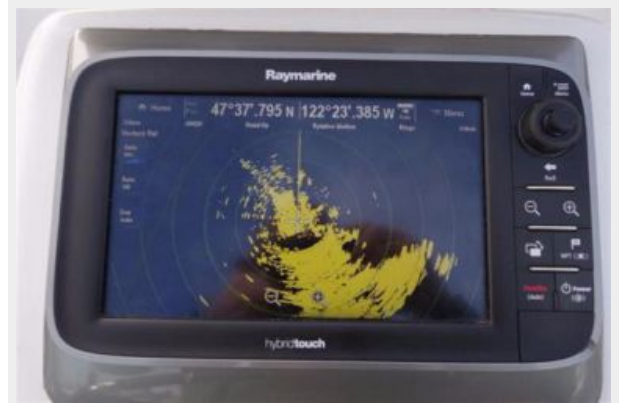
Gauges and Bow Thruster Control



Electronics



Raymarine e95 with Radar



Stern



Transom



Starboard Foredeck



Port Foredeck



Bow



Anchor Locker



Anchor Roller



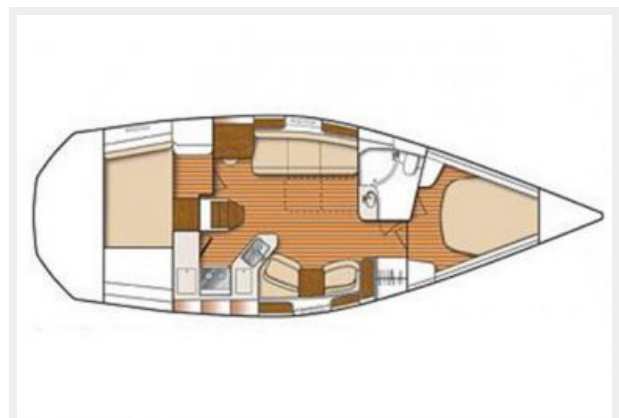
Boom & Mast



Standing Rigging



Interior Layout



Manufacturer Provided Image



Manufacturer Provided Image

Salon



Salon 2

Galley



Port Settee



Salon Table Down



Salon Table 2



Salon - Convertible Bed



Salon - Starboard Side



Salon - Starboard Settee



Nav Station



Nav Station Panel



Forward Cabin



Forward Cabin 2



Aft Cabin



Head (two doors to access)



Head 2



Engine



Engine 2



Engine Hours



Manufacturer Provided Image



Manufacturer Provided Image



CONTACTS

Andrey Shestakov, leading yacht broker of the sales department of Shestakov Yacht Sales Inc. Shestakov Yacht Sales Inc., the official representative of the Miami/Fort Lauderdale FL headquarters.

Contact details

Email: andrey@shestakovyachtsales.com

Web: shestakovyachtsales.com/en/

Telephones

USA: +1(954)274-4435

Office hours

Monday – Saturday: **9:00 - 21:00** EDT

Sunday: **closed**

Address



Harbour Towne Marina, 850 NE 3rd St,
STE 213, Dania, FL 33004