

## FALCONWOOD — SUNSEEKER



**Builder:** SUNSEEKER

**Year Built:** 2016

**Model:** Motor Yacht

**Price:** PRICE ON APPLICATION

**Location:** United States

**LOA:** 68' 0" (20.73m)

**Beam:** 16' 9" (5.11m)

**Max Draft:** 5' 2" (1.57m)

**Cruise Speed:** 25 Kts. (29 MPH)

**Max Speed:** 31 Kts. (36 MPH)

Our experienced yacht broker, Andrey Shestakov, will help you choose and buy a yacht that best suits your needs **FALCONWOOD — SUNSEEKER** from our catalogue. Presently, at Shestakov Yacht Sales Inc., we have a wide variety of yachts available on our sale's list. We also work in close contact with all the big yacht manufacturers from all over the world.

If you would like to buy a yacht **FALCONWOOD — SUNSEEKER** or would like help answering any questions concerning purchasing, selling or chartering a yacht, please call **+1(954)274-4435**

---

# TABLE OF CONTENTS

---

TABLE OF CONTENTS	2
SPECIFICATIONS	3
Overview	3
Basic Information	3
Dimensions	3
Speed, Capacities and Weight	3
Accommodations	3
Hull and Deck Information	4
Engine Information	4
DETAILED INFORMATION	5
Fly Bridge	5
Cockpit	5
Main Salon & Helm	5
Galley	6
Accommodations	6
Deck Equipment	7
Mechanical	7
Exclusions	7
Disclaimer	7
PHOTOS	8
CONTACTS	16
Contact details	16
Telephones	16
Office hours	16
Address	16

---

# SPECIFICATIONS

---

## Overview

---

Classic Sunseeker styling. This 68 Sport Yacht offers a 3 stateroom, 3 en suite layout with crew quarters or extra cabin aft. The interior bulkheads and cabinetry are satin finish White Oak with Gloss finish Jura gray granite counter tops and Wenge sole.

## Basic Information

---

**Category:** Motor Yacht

**Sub Category:** Flybridge

**Model Year:** 2016

**Year Built:** 2016

**Country:** United States

**Vessel Top:** Bimini Top

## Dimensions

---

**LOA:** 68' 0" (20.73m)

**LWL:** 53' 10" (16.41m)

**Beam:** 16' 9" (5.11m)

**Max Draft:** 5' 2" (1.57m)

## Speed, Capacities and Weight

---

**Cruise Speed:** 25 Kts. (29 MPH)

**Max Speed:** 31 Kts. (36 MPH)

**Displacement:** 82209 Pounds

**Water Capacity:** 211 Gallons

**Fuel Capacity:** 925 Gallons

## Accommodations

---

**Total Cabins:** 3

**Total Heads:** 3

---

## Hull and Deck Information

---

**Hull Material:** Fiberglass

**Hull Configuration:** Deep Vee

---

## Engine Information

---

**Engines:** 2

**Manufacturer:** MTU

**Model:** 8V 2000 M94

**Engine Type:** Inboard

**Fuel Type:** Diesel

---

## DETAILED INFORMATION

---

### Fly Bridge

---

- Teak deck
- Helm station (P)
- Simrad Chartplotter
- Simrad autopilot
- Simrad Speed & depth indicators
- Simrad VHF
- AFI dual trumpet horn
- Twin helm chairs
- Large sunpad & bench seating opposite helm
- Bimini top
- Large U-settee w/teak table
- Wet bar w/Vitrofrigo icemaker, Cool box, Kenyon Electric BBQ
- Sport Bridge zone performance audio w/4 Sonance speakers

### Cockpit

---

- Teak Deck
- Large U-Settee w/teak table
- Large Sunpad
- Waeco refrigerator
- Stairway to Flybridge

### Main Salon & Helm

---

- U-Settee w/coffee table aft
- Dining area w/table forward, opposite helm
- Storage cabinets
- U-line Wine Cooler
- Samsung 55" TV can be raised and lowered
- Helm station (S)
- 2 x Helm seats
- Navigation console & chart area
- Simrad AC12 Autopilot
- Simrad Chartplotter/GPS/Radar
- Simrad AIS w/GPS
- Simrad speed & depth indicators
- Simrad VHF radio

- Simrad Go-Free Wireless Bridge

## Galley

---

- White Oak & Wenge cabinetry
- Satin Wenge sole
- Granite countertop
- Plastimo 3 Ring Ceramic cooktop
- Vitrifigo refrigerator w/2 freezer drawers
- Sharp microwave
- Miele Slimline dishwasher

## Accommodations

---

3 Cabins each with en suite head and shower. Galley down

### MASTER CABIN-AMIDSHIP

- Centerline King berth w/storage below
- Large walk in closet
- Settee
- Vanity w/stool
- Samsung 32" LED TV
- Harmon Kardon CD/DVD/Blu-Ray/Radio
- En Suite head w/stall shower

### VIP CABIN-FORWARD

- Centerline queen berth w/storage below
- 2 x Hanging lockers
- Samsung 32" LED TV
- Harmon Kardon CD/DVD/Blu-Ray/Radio
- Cabinets on port & starboard bulkheads
- En Suite head w/shower

### STARBOARD GUEST CABIN

- Twin berths w/storage below
- Hanging locker
- Nightstand
- Samsung 22" LED TV
- Harmon Kardon CD/DVD/Blu-Ray/Radio
- En Suite head w/shower

---

## CREW QUARTERS-Aft

- Twin berths
- Head w/shower
- Splendide Washer/Dryer

---

## Deck Equipment

- Lewmar SS 40kg Delta anchor
- 60m Galvanized chain
- Hydraulic lift platform
- Tender recovery roller system
- 4 x White Aqualuma underwater lights
- Foredeck sunpad w/folding back rests
- Fresh water wash down outlets: Swim platform, FB, Foredeck
- Williams RIB Turbojet 325 tender

---

## Mechanical

- Twin MTU 8V 2000 M94@1270hp each
- 21.5kW Onan generator
- Sleipner Stabilizers
- Sleipner Bow and Stern Thrusters
- Automatic bilge pumps
- Engine room fire extinguisher system
- Plumbing & wiring available for watermaker installation

---

## Exclusions

Owner's personal belongings.

---

## Disclaimer

The Company offers the details of this vessel or yacht in good faith but cannot guarantee or warrant the accuracy of this information nor warrant the condition of the vessel. A buyer should instruct his representatives, agents, or his surveyors, to investigate such details as the buyer desires validated. This vessel or yacht is offered subject to prior sale, price change, or withdrawal without notice.

# PHOTOS



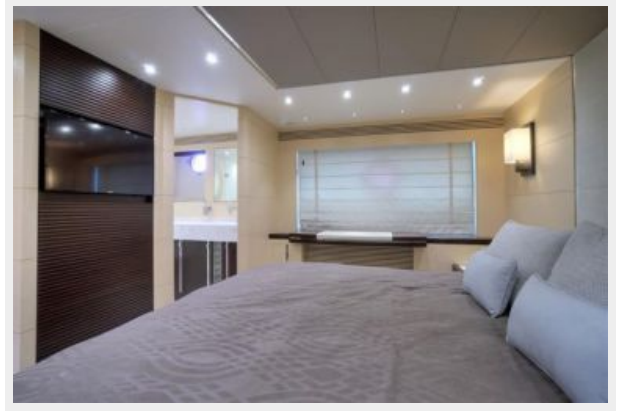


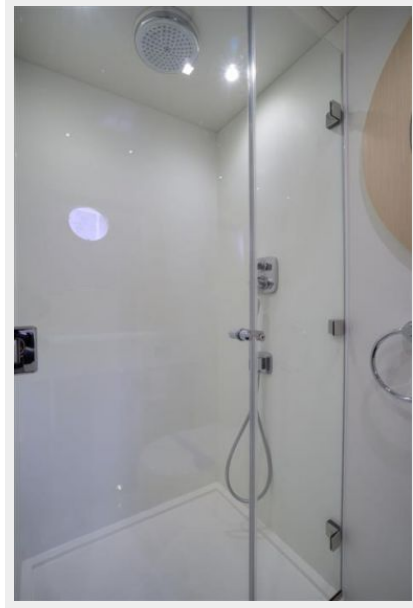


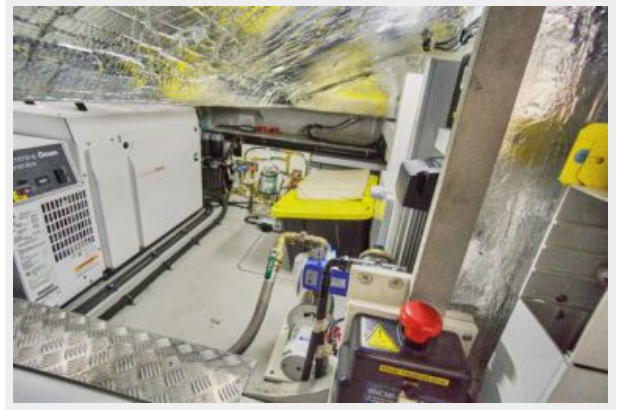












# CONTACTS

---

Andrey Shestakov, leading yacht broker of the sales department of Shestakov Yacht Sales Inc. Shestakov Yacht Sales Inc., the official representative of the Miami/Fort Lauderdale FL headquarters.

## Contact details

---

Email: [andrey@shestakovyachtsales.com](mailto:andrey@shestakovyachtsales.com)

Web: [shestakovyachtsales.com/en/](http://shestakovyachtsales.com/en/)

## Telephones

---

USA: +1(954)274-4435

## Office hours

---

Monday – Saturday: **9:00 - 21:00** EDT

Sunday: **closed**

## Address

---



Harbour Towne Marina, 850 NE 3rd St,  
STE 213, Dania, FL 33004