

TRUE LOVE — PRINCESS YACHTS



Судостроитель: PRINCESS YACHTS

Год постройки: 2016

Модель: Моторная яхта

Цена: **ЦЕНА ЯХТЫ ПО ЗАПРОСУ**

Местонахождение: United States

Длина общая: 68' 0" (20.73m)

Ширина: 17' 8" (5.38m)

Макс. осадка: 5' 2" (1.57m)

Купить True Love — PRINCESS YACHTS а также выбрать подходящую вам яхту из нашего каталога яхт вам поможет опытный яхтенный брокер Андрей Шестаков. На сегодняшний день компания Shestakov Yacht Sales Inc. имеет большое количество яхт в собственном списке продаж, а также тесно сотрудничает со всеми крупными яхтенными производителями по всему миру.

Для того чтобы купить яхту True Love — PRINCESS YACHTS а также проконсультироваться по любому вопросу связанному с покупкой, продажей, чартером яхт позвоните по телефону **+7(918)465-66-44**.

ОГЛАВЛЕНИЕ

ОГЛАВЛЕНИЕ	2
ХАРАКТЕРИСТИКИ	4
Обзор	4
Основная информация	4
Размеры	4
Скорость, вместимость и масса	4
Размещение	4
Корпус и палуба	5
Информация о двигателе	5
ПОДРОБНОЕ ОПИСАНИЕ	6
Accommodations	6
Main Deck	6
Lower Deck	7
Flybridge	7
Forward Deck Lounge	7
Galley Specifications	8
Lower Helm Specifications	8
Salon Specifications	8
Master Stateroom Specifications	9
VIP Stateroom Specifications	9
Guest Bunk Stateroom Specifications	9
Crew Quarters Specification	10
Flybridge Specifications	10
Noteworthy Factory Options	10
Other Notable Features	12
Исключения	12
Отказ от ответственности	12
ФОТОГРАФИИ	14

КОНТАКТЫ	34
Контактная информация	34
Телефоны	34
Время работы	34
Адрес	34

ХАРАКТЕРИСТИКИ

Обзор

2017 68' Princess Sport Cruiser "TRUE LOVE" "TRUE LOVE" is a remarkable example of Princess Yacht's highly successful 68 Flybridge series. She is built to US specification and features 1400 HP MAN engines, SeaKeeper Gryo Stabilization, Factory Hardtop, and Garmin Electronics Package. True Love looks and shows as new. **MAN Engine and Onan Generator Transferable Extended Warranties - 4 years remaining.**

Основная информация

Тип судна: Моторная яхта

Модельный год: 2017

Год постройки: 2016

Страна: United States

Открытая палуба мостика: Да

Размеры

Длина общая: 68' 0" (20.73m)

Ширина: 17' 8" (5.38m)

Макс. осадка: 5' 2" (1.57m)

Скорость, вместимость и масса

Водоизмещение: 82673 Pounds

Вместимость воды: 442 Gallons

Вместимость сточного бака: 72 Gallons

Объем топливного бака: 1344 Gallons

Размещение

Всего кают: 3

Всего ком. состава: 2

Корпус и палуба

Материал корпуса: Fiberglass

Информация о двигателе

Производитель: MAN

Модель: V-12

Тип двигателя: Inboard

Тип топлива: Diesel

ПОДРОБНОЕ ОПИСАНИЕ

Accommodations

"TRUE LOVE" is a remarkable example of Princess Yacht's highly successful 68 Flybridge series. Properly equipped by her knowledgeable owner and maintained by her top notch captain this boat is a must see. Her interior is finished in custom satin Walnut which complements the understated yet sophisticated styling approach Princess Yachts is famous for. The layout of TRUE LOVE can easily adapt to the specific needs of the future owner. Three guest cabins, one master stateroom, and one crew cabin can accommodate you, your crew and up to six guests in comfort. Each cabin is equipped with a flat screen display and Fusion media player.

The upper and lower control stations are equipped with the latest in navigation and communication technology for extended cruising. Mechanically fitted with MAN V12 1400 hp series motors, Onan 21.5 generator and SeaKeeper Gyro Stabilization TRUE LOVE will provide you and your guests with the utmost cruising experience.

Main Deck

Inside, her appeal becomes all the more alluring. An aft-galley layout is perfectly placed to serve the cockpit, with triple sliding doors and an electrically opened aft window. Expansive areas of glass allow light to pour into the entire main deck area.

SALON: The windows are the first thing you will notice as you enter the salon. Because Princess Yachts uses a resin-infusion system for its fiberglass construction, the strength in the cabin house is considerably increased, and this allows for larger windows than previously available. The resulting view is spectacular.

The salon is finished in top notch upholstery and furnishings. From the aft galley it's a single step up to the salon; here is also where the flooring transitions from timber to carpeting. Custom Cadet Grey canvas carpet runners provide excellent protection to the salon carpeting should a spill occur. The large ivory colored U-shaped sofa is situated to the port side and features warm toned Blue, Green and Tan accent pillows. The center area of the sofa also features an upholstered ottoman with integrated teak serving tray. Directly across from the U-shaped sofa is an additional sofa with a dark rattan style coffee table. This seating area also features a built-in sofa table with a concealed 48" flat screen television on a power lift.

GALLEY: The galley on the 68 is positioned aft near the oversize sliding doors to the cockpit. With an electrically retractable rear window, the galley's aft counter becomes an open serving bar for the cockpit. This is alfresco living, with a seamless no-step transition from galley to cockpit, an outside table for dining and another opposite the galley.

LOWER HELM: The lower helm area features a raised L-shaped seating to port for a more social

voyage. Another notable feature to the helm is the extra space for the captain and his mate, giving them the ability to stand while underway if need be - this greatly improves sight lines.

Lower Deck

Master Stateroom: Most will be surprised by the stairs from the main salon to the master suite belowdecks. This separate entry is an impressive privacy feature usually found on yachts above 100 feet. The stairs lead to a foyer with a door to the stateroom.

The full-beam master features “picture windows” on each side. They’re big and bright, with a sideboard with drawers under one and a bureau with hidden vanity under the other. The master head is a comfortable size, with a shower and yet another great view from its window.

Guest Staterooms: TRUE LOVE features A VIP stateroom forward (stairs descend from the helm area) as well as two double berth stateroom that can convert to a full berth by the touch of a button. The two double berth staterooms share the same head and the VIP stateroom feature an en suite head.

Crew Quarters: The crew cabin is generous in size; featuring its own separate entrance abaft of the engine room. Accommodations include double berths, head and hanging locker.

Flybridge

The Flybridge on the 68 is expansive. The teak-planked stairway from the cockpit offers gently spaced steps and solid handrails. As on the main deck, the focus up on the bridge is entertaining and comfort; with a spacious settee and dining table served by an L-shaped outdoor kitchen with electric lava-brick barbecue, sink and drawer fridge. The upper helm area features two pedestal helm chairs behind the instrument console, and another seating area opposite can convert to a sun pad.

The entire bridge is protected by the factory fiberglass hardtop with an electric sunroof and custom three sided enclosure.

Forward Deck Lounge

At the bow, a walk-through foredeck comes complete with an elegant seating area, large sunpad and plenty of stowage.

Cockpit:

On deck, the aft cockpit is designed to be the main dining area and comes suitably dressed with mood lighting, beautifully upholstered seating for eight and a large teak table. To port and starboard of the aft cockpit dining area are stairwells that provide access to the submersible teak

swim platform. The swim platform area also features a clever aft-facing twin seat set into the transom.

Galley Specifications

- Miele 24" Speed Oven; Microwave / Convection
- 4 Burner Trident K Cooktop
- HansGrohe Faucet
- Franke Double Basin Sink
- Insinkerator Food Waste Disposer
- Exhaust Fan with (2) LED Lights
- Liebherr Top Mounted Refrigerator Freezer
- Miele Dishwasher
- (8) Soft Close Storage Drawers
- (5) Large Storage Cabinets
- China Cupboard

Lower Helm Specifications

- (2) Garmin 7616 16" Touchscreen Multi-Function Displays
- Garmin GHP12 Autopilot
- Garmin GMR624 xHD2 Radar (6kW / 4' open array scanner)
- Garmin GMI20 Multifunction Display
- Garmin VHF-300 Handset VHF radio
- FLIR oscillating low light and thermal night vision camera
- MAN Rexroth Electronic Engine Controls
- SeaKeeper Gyro Stabilization Control
- SidePower Variable Speed Bow and Stern Thruster controls
- ACR RCL Spotlight Control Pad
- Fireboy Fire Suppression Indicator Panel
- Bennett Trim Tab Controller and Indicator
- Boeing MMDS-AP
- Access to DC Circuit Breaker with Schematics

Salon Specifications

- Waeco under counter Refrigerator
- Harmon Kardon 5.1 Surround Sound with BluRay Player and KEF speakers (FB linked to salon audio system)

- Vitrifigo under counter Icemaker
- Momentary switch for TV actuator
- Samsung 48" LCD Television
- Interval Central Vacuum system
- Cadet Grey Canvas Carpet Runners
- Liquor Cabinet aft of helm station

Master Stateroom Specifications

- Samsung 40" LED Television
- Harmon Kardon 2.1 Surround Sound with BluRay Player
- Sideboard unit with drawers in place of Master Sofa
- (Aristo separate Washer / Dryer behind concealed cabinet door in Master Stateroom Lobby).

MASTER HEAD

- Dometic Pushbutton Head
- Perrin Rowe vitreous china sink (White)
- HansGrohe faucet
- HansGrohe Shower head and control valve
- Koko White Countertop
- Carrara White Flooring

VIP Stateroom Specifications

- Samsung LCD Television
- Fusion MS AV 750 media player with 2 speakers
- Ensuite Head

VIP HEAD

- Dometic push button toilet
- Perrin Rowe Vessel Sink
- HansGrohe Faucet
- HansGrohe Shower head and control valve
- Koko White Countertop
- Carrera White Flooring

Guest Bunk Stateroom Specifications

- Fusion MS AV 750 Media Player with 2 speakers

- Samsung LCD Television
- Power actuator converting single bunks to a double berth
- Access to Guest Head (Starboard stateroom only)
- Large Hanging Locker
- Night Stand
- Climate Control

Crew Quarters Specification

- Separate access at transom via watertight bulkhead door to a 3-step ladder
- Twin berths with nightstand and drawer
- Samsung LCD Television
- Hanging Locker
- Reading Lamps
- Climate control
- Crew Head with Separate shower

Flybridge Specifications

WET BAR

- Kenyon Electric Grill
- Samuel Heath Faucet
- Vitrifigo "drawer-style" stainless steel Refrigerator
- Concealed waste basket
- Vitrifigo Icemaker

HELM AREA

- (2) Garmin GPSMAP 7616 16" MFD
- Garmin GM120 Multifunction display (speed, depth, temp)
- Garmin GHP12 Autopilot
- Garmin VHF300 Handset
- Fusion MS-UD650 Media Player with (2) Fusion Speakers
- SeaKeeper Gyro Stabilization control head
- Man Rexroth Electronic Engine Controls
- ACR RCL Spotlight Control Pad

Noteworthy Factory Options

SeaKeeper Gyro Stabilizer - M16 \$133,630 option

Fiberglass Hardtop with electric opening - \$84,170 option

ENGINES AND DRIVE:

- Upgraded engine package - MAN V-12 1400 hp in lieu of standard CAT C18 (430 hours)
- Port side aft docking station
- Oil changing system for engines, transmissions and generator
- Variable speed bow and stern thrusters (dual stations)
- Third station controls in cockpit (engine controls, thruster controls, and engine emergency stops.) Third station controls are port side in a concealed fiberglass compartment.
- MAN Engine and Onan Generator extended transferable warranties – 4 years remaining

INTERIOR FURNITURE

- Wood Interior; Walnut interior with satin finish
- Lower helm seats in Truffle leather
- Walnut flooring to aft dining area

LAYOUT

- Crew Cabin with Air Conditioning
- Starboard cabin electric conversion to double berth
- Port cabin electric conversion to double berth
- Side board unit with drawers in place of master sofa

GALLEY

- Galley countertop; Avonite Carrara Grey

DECOR

- Upgraded accent pillows
- Leather salon Upholstery
- Upgraded carpet
- Upgraded materials including bedding and throws

DECK HARDWARE

- Dingy chocks on bathing platform
- Side boarding gates to cockpit area
- Coffee table for foredeck seating area (with fixing point)

ELECTRICAL

- Buell air horns
- (2) Glendenning Cablemasters

- Separate Washer / Dryer IPO standard
- (2) Voltage Stabilizer Transformers

EXTERIOR UPHOLSTERY

- Cockpit and Flybridge seating in Vogue Eucalyptus
- Cockpit seating covers
- Foredeck sunbed and seating in Vogue Eucalyptus
- Foredeck sunbed cushion cover
- Foredeck seating cover
- Submersible swim platform with teak inlay and concealed under-mount swim ladder

Other Notable Features

- Flir oscillating low light and thermal night vision camera
- Dual Garmin VHF radios with an additional microphone at the cockpit docking station; this allows for full VHF usage and intercom communication between all three stations.
- 3-sided Costa Clear Flybridge Enclosure
- Water Filtration system for entire vessel
- URC programmable Television remotes for Salon Television and Master Stateroom Television
- Automatic Identification System (AIS) Transceiver
- Removable cover for Sunshade area
- Full canvas protective covers for all Teak decks and swim platform
- Independent Charging system for Generator battery bank
- Complete set of snap-less blackout sunshade covers for windows; designed to further protect the vessel's interior from UV rays
- Switlik lift raft in soft valise (2017 model)
- EPIRB
- Extra 120 volt outlets added to flybridge, cockpit and lazarette

Исключения

При продаже яхты исключаются личные вещи владельца.

Отказ от ответственности

Компания предоставляет описание судна или яхты добросовестно, но не может гарантировать точность этой информации, а также не ручается за техническое состояние. Покупатель должен проинструктировать своих агентов или оценщиков исследовать представленную информацию более подробно, по собственному желанию.

Продажа судна или яхты, изменение цены или снятие с продажи будет происходить без предварительного уведомления.

ФОТОГРАФИИ













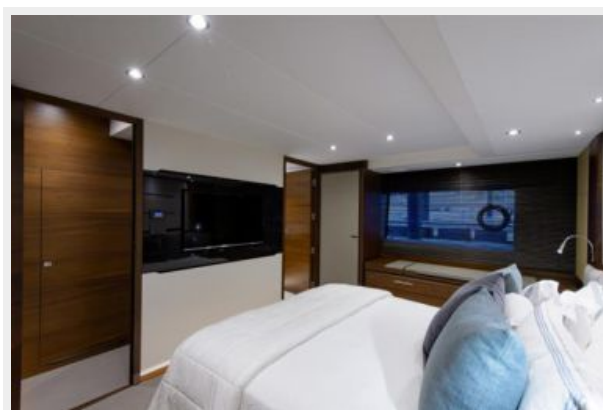
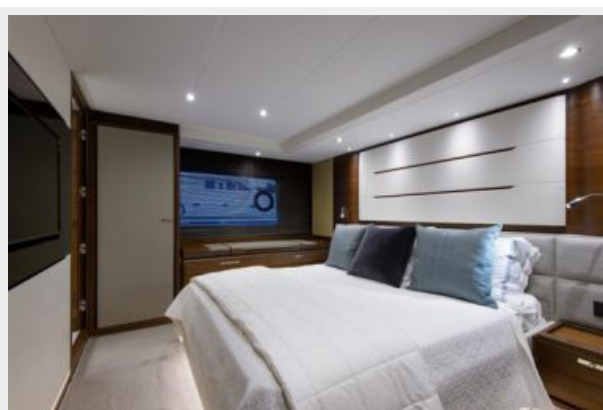


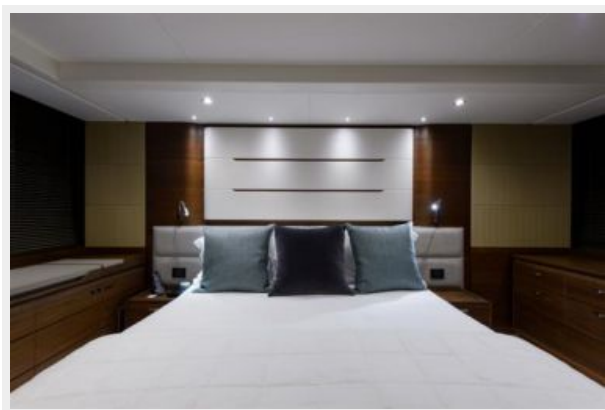




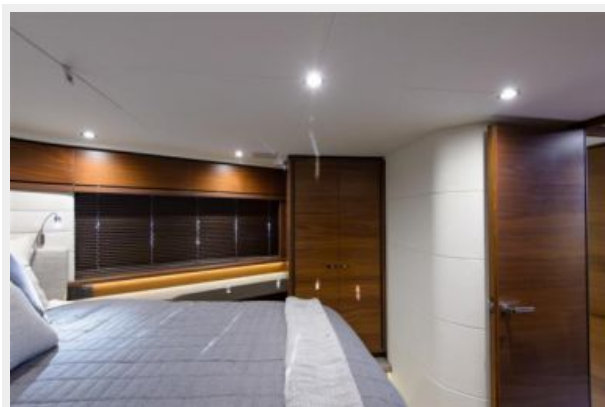


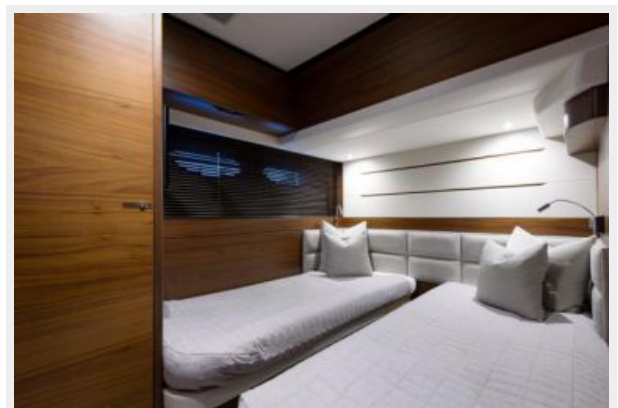
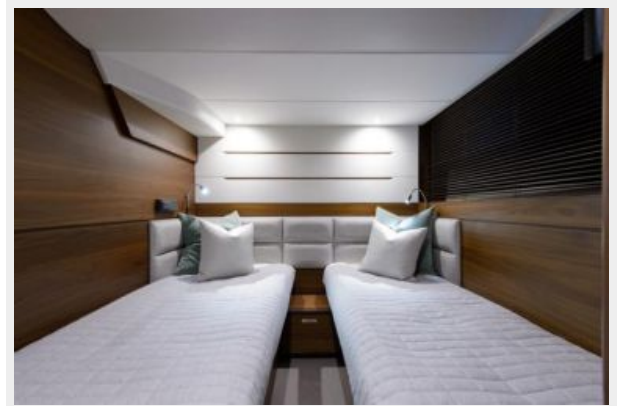


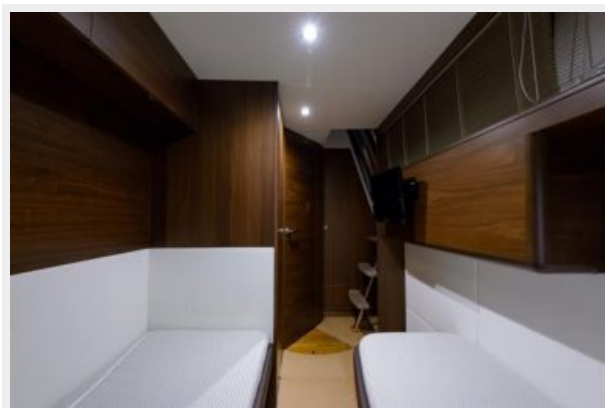
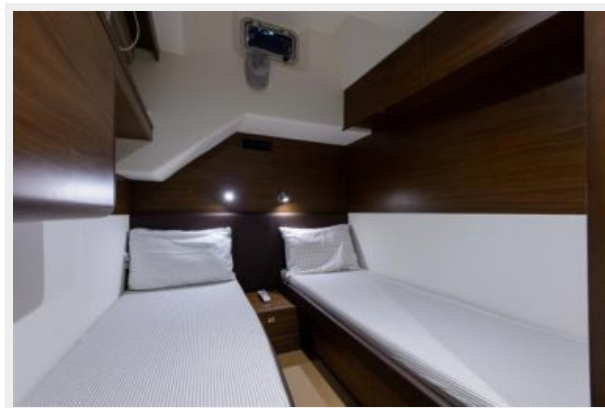






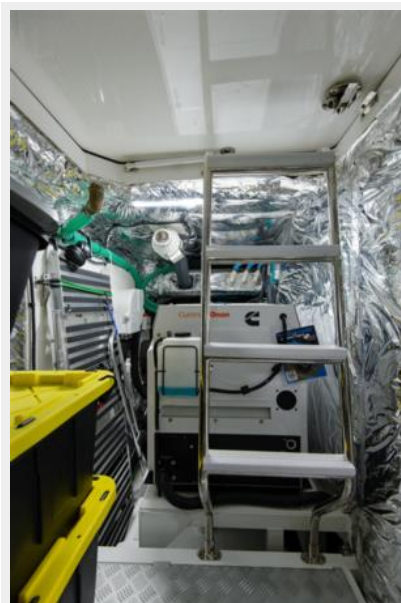












КОНТАКТЫ

Андрей Шестаков (Andrey Shestakov) – ведущий яхтенный брокер отдела продаж яхт и судов компании Shestakov Yacht Sales Inc. Официальный представитель Shestakov Yacht Sales Inc. для русскоговорящих клиентов в центральном офисе компании в Майами/Форт Лодердейл/Флорида/США.

Контактная информация

Email: andrey@shestakovyachtsales.com

Web: shestakovyachtsales.com

Телефоны

Краснодарский край: **+7(918)465-66-44**

США, Майами, Флорида: **+1(954)274-4435**

Время работы

Понедельник – Суббота: **9:00 - 21:00**
EDT

Воскресенье: **Закрето**

Адрес



Harbour Towne Marina, 850 NE 3rd St,
STE 213, Dania, FL 33004