

WATER MUSIC — SHANNON



Builder: SHANNON

Year Built: 2005

Model: Motor Yacht

Price: PRICE ON APPLICATION

Location: United States

LOA: 38' 0" (11.58m)

Beam: 13' 0" (3.96m)

Min Draft: 2' 0" (0.61m)

Cruise Speed: 13 Kts. (15 MPH)

Max Speed: 17 Kts. (20 MPH)

Our experienced yacht broker, Andrey Shestakov, will help you choose and buy a yacht that best suits your needs **WATER MUSIC — SHANNON** from our catalogue. Presently, at Shestakov Yacht Sales Inc., we have a wide variety of yachts available on our sale's list. We also work in close contact with all the big yacht manufacturers from all over the world.

If you would like to buy a yacht **WATER MUSIC — SHANNON** or would like help answering any questions concerning purchasing, selling or chartering a yacht, please call **+1(954)274-4435**

TABLE OF CONTENTS

TABLE OF CONTENTS	2
SPECIFICATIONS	5
Overview	5
Basic Information	5
Dimensions	5
Speed, Capacities and Weight	6
Accommodations	6
Hull and Deck Information	6
DETAILED INFORMATION	7
WATER MUSIC 2005 Shannon SRD Walkthrough	7
WATER MUSIC 2005 Shannon SRD Cockpit	7
WATER MUSIC 2005 Shannon SRD Salon	7
WATER MUSIC 2005 Shannon SRD Stateroom & Head	7
WATER MUSIC 2005 Shannon SRD Galley	7
WATER MUSIC 2005 Shannon SRD Mechanical/Plumbing	8
WATER MUSIC 2005 Shannon SRD Electrical	8
WATER MUSIC 2005 Shannon SRD Electronics & Helm	8
WATER MUSIC 2005 Shannon SRD Deck Equipment	8
Exclusions	8
Exclusions	9
Disclaimer	9
PHOTOS	10
WATER MUSIC 2004 Shannon SRD 38 Downeast	10
WATER MUSIC 2004 Shannon SRD 38 Downeast	10
WATER MUSIC 2004 Shannon SRD 38 Downeast	10
WATER MUSIC 2004 Shannon SRD 38 Downeast	10
WATER MUSIC 2004 Shannon SRD 38 Downeast	10
WATER MUSIC 2004 Shannon SRD 38 Downeast	11

WATER MUSIC 2004 Shannon SRD 38 Downeast	11
WATER MUSIC 2004 Shannon SRD 38 Downeast	11
WATER MUSIC 2004 Shannon SRD 38 Downeast	11
WATER MUSIC 2004 Shannon SRD 38 Downeast	11
WATER MUSIC 2004 Shannon SRD 38 Downeast	11
WATER MUSIC 2004 Shannon SRD 38 Downeast	12
WATER MUSIC 2004 Shannon SRD 38 Downeast	12
WATER MUSIC 2004 Shannon SRD 38 Downeast	12
WATER MUSIC 2004 Shannon SRD 38 Downeast	12
> WATER MUSIC 2004 Shannon SRD 38 Downeast	12
WATER MUSIC 2004 Shannon SRD 38 Downeast	12
WATER MUSIC 2004 Shannon SRD 38 Downeast	13
WATER MUSIC 2004 Shannon SRD 38 Downeast	13
WATER MUSIC 2004 Shannon SRD 38 Downeast	13
WATER MUSIC 2004 Shannon SRD 38 Downeast	13
WATER MUSIC 2004 Shannon SRD 38 Downeast	13
WATER MUSIC 2004 Shannon SRD 38 Downeast	13
WATER MUSIC 2004 Shannon SRD 38 Downeast	14
WATER MUSIC 2004 Shannon SRD 38 Downeast	14
WATER MUSIC 2004 Shannon SRD 38 Downeast	14
WATER MUSIC 2004 Shannon SRD 38 Downeast	14
WATER MUSIC 2004 Shannon SRD 38 Downeast	14
WATER MUSIC 2004 Shannon SRD 38 Downeast	14
WATER MUSIC 2004 Shannon SRD 38 Downeast	14
WATER MUSIC 2004 Shannon SRD 38 Downeast	15
WATER MUSIC 2004 Shannon SRD 38 Downeast	15
WATER MUSIC 2004 Shannon SRD 38 Downeast	15
WATER MUSIC 2004 Shannon SRD 38 Downeast	15
WATER MUSIC 2004 Shannon SRD 38 Downeast	15

WATER MUSIC 2004 Shannon SRD 38 Downeast	16
WATER MUSIC 2004 Shannon SRD 38 Downeast	16
CONTACTS	17
Contact details	17
Telephones	17
Office hours	17
Address	17

SPECIFICATIONS

Overview

WATER MUSIC is a beautiful expression of the 38' Shannon SRD and is hull #3. WATER MUSIC is a combination of traditional styling with innovative forward-thinking and below-the-waterline features. Shannon SRD is an acronym for the patented Schulz Reverse Dead-rise. Walter Schultz designed her to tuck in just about any Bahamian anchorage with her 2 ft draft. Shannon boats have been built since 1975 in Bristol, RI. Performance, Safety and Luxury define the Shannon brand. She's known for incredible fuel efficiency and outstanding stability at speed. The single screw has the performance of a twin. Beside performance, her generous-sized and great cockpit layout provides her guests and crew a very social setting either at anchor or under way. The present owner purchased her in Texas and has shown her the love she deserves for the past three years. NEW bottom job, oil change on engine and generator Dec 2017. NEWER electronics including 2016 Garmin 10" GPS, ESI Polishing Fuel System with Two filters and Shaft Saver Alloy 5052 Fuel Tanks w/gauges

Basic Information

Category: Motor Yacht

Model Year: 2005

Year Built: 2005

Country: United States

Vessel Top: Hardtop

Dimensions

LOA: 38' 0" (11.58m)

LWL: 37' 7" (11.46m)

Beam: 13' 0" (3.96m)

Min Draft: 2' 0" (0.61m)

Clearance: 10' 0" (3.05m)

Speed, Capacities and Weight

Cruise Speed: 13 Kts. (15 MPH)

Max Speed: 17 Kts. (20 MPH)

Displacement: 14000 Pounds

Water Capacity: 80 Gallons

Holding Tank: 20 Gallons

Fuel Capacity: 280 Gallons

Accommodations

Total Cabins: 1

Total Berths: 1

Total Heads: 1

Hull and Deck Information

Hull Material: Fiberglass

Hull Configuration: Modified V-Hull

DETAILED INFORMATION

WATER MUSIC 2005 Shannon SRD Walkthrough

Stepping aboard is managed from the stern onto a wide and secure swim platform with lazarette stowage beneath. Enter the hard-covered cockpit through the transom door. The engine room is under the wheelhouse sole. Down the companionway, the L-shaped galley is aft and to starboard. Aft and to port is the head. Forward to port is the nav station. Salon has port side seating and stbd L-shaped settee with drop-leaf table. The master stateroom is forward.

WATER MUSIC 2005 Shannon SRD Cockpit

Through the transom door step into the social center of WATER MUSIC. The Ultra-Suede Captain's helm-seat is stbd and the First Mate's matching seat is to port. There is excellent all-around visibility. Comfortable settee seating is L-Shaped around a varnished Cherry table. The engine room is under the wheelhouse sole and accessed with the push of a button.

WATER MUSIC 2005 Shannon SRD Salon

WATER MUSIC has 6'4" headroom between the teak and holly sole and the white vinyl headliner panels in the salon. The interior style uses the gloss varnish on the Cherry trim with white panels and bulkheads. There is an L-shaped settee to stbd, a center-line drop-leaf table and straight settee to port. Bookshelves and stowage is available above and outboard of each settee. Both port and stbd seating provide additional sleeping for guests.

WATER MUSIC 2005 Shannon SRD Stateroom & Head

The overhead hatch makes the Master stateroom light and bright. It is forward with an oversized V-Berth that includes a centerline filler. Drawers and Hanging Locker are finished in gloss Cherry varnish. Aft and to port is a head with spacious separate shower, sink and mirror.

WATER MUSIC 2005 Shannon SRD Galley

Down the companionway, the L-shaped galley is aft and to stbd

- 2-burner LPG stove
- Stainless Sink
- Microwave, Dimension 4
- Refrigerator, Nova Kool 110v/12v

- Ample stowage space for galley equipment and supplies

WATER MUSIC 2005 Shannon SRD Mechanical/Plumbing

- Yanmar 440 HP 6LY2A-STP Hatch Lift for Engine Access***
- Shaft Saver
- ESI Fuel Polishing System
- Transmission, Twin Disk MG507
- Side power 12V Bow Thruster
- Hot Water Heater, Atlantic Marine 6 Gal, Model T6E
- Hot and cold pressure water system
- 16,000 BTU Air Conditioning

***Electric

WATER MUSIC 2005 Shannon SRD Electrical

- Generator, Phasor Marine, 4.5 Kw, Mod. K2, 240V/120V, Serial #08594 - 20 Hours
- 30amp shore power w/50 foot cord
- 4 -120amp AH Heavy Duty gel cell batteries w/parallel switch

WATER MUSIC 2005 Shannon SRD Electronics & Helm

- Chart plotter, Garmin GPS map 7608XSV (2016)
- Speed/log ST60, Raymarine
- VHF /Radio Standard Horizon, Explore (2016)
- KVH Azimuth 1000 electric steering compass
- Auto Pilot STC 6001 Smart Pilot (not working)
- RCA color TV w/integral DVD player
- Kenwood Stereo w/indoor & outdoor speakers

WATER MUSIC 2005 Shannon SRD Deck Equipment

- Bruce stainless #22 anchor w/chain leader and nylon rode
- Quick 12V windless
- Emergency tiller
- Dinghy hoist, Nautical Structures MC800
- Ditch Bag

Exclusions

Owners personal items, tools.

Exclusions

Owner's personal belongings.

Disclaimer

The Company offers the details of this vessel or yacht in good faith but cannot guarantee or warrant the accuracy of this information nor warrant the condition of the vessel. A buyer should instruct his representatives, agents, or his surveyors, to investigate such details as the buyer desires validated. This vessel or yacht is offered subject to prior sale, price change, or withdrawal without notice.

PHOTOS

**WATER MUSIC 2004 Shannon SRD 38
Downeast**



**WATER MUSIC 2004 Shannon SRD 38
Downeast**



**WATER MUSIC 2004 Shannon SRD 38
Downeast**



**WATER MUSIC 2004 Shannon SRD 38
Downeast**



**WATER MUSIC 2004 Shannon SRD 38
Downeast**



**WATER MUSIC 2004 Shannon SRD 38
Downeast**



**WATER MUSIC 2004 Shannon SRD 38
Downeast**



**WATER MUSIC 2004 Shannon SRD 38
Downeast**



**WATER MUSIC 2004 Shannon SRD 38
Downeast**



**WATER MUSIC 2004 Shannon SRD 38
Downeast**



**WATER MUSIC 2004 Shannon SRD 38
Downeast**



**WATER MUSIC 2004 Shannon SRD 38
Downeast**



**WATER MUSIC 2004 Shannon SRD 38
Downeast**



**WATER MUSIC 2004 Shannon SRD 38
Downeast**



**WATER MUSIC 2004 Shannon SRD 38
Downeast**



**> WATER MUSIC 2004 Shannon SRD 38
Downeast**



**WATER MUSIC 2004 Shannon SRD 38
Downeast**



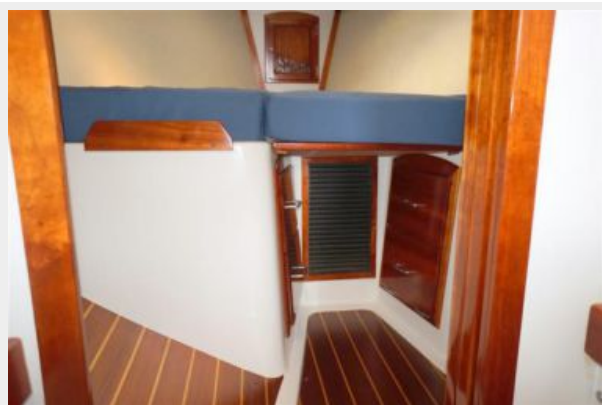
**WATER MUSIC 2004 Shannon SRD 38
Downeast**



**WATER MUSIC 2004 Shannon SRD 38
Downeast**



**WATER MUSIC 2004 Shannon SRD 38
Downeast**



**WATER MUSIC 2004 Shannon SRD 38
Downeast**



**WATER MUSIC 2004 Shannon SRD 38
Downeast**



**WATER MUSIC 2004 Shannon SRD 38
Downeast**



**WATER MUSIC 2004 Shannon SRD 38
Downeast**



**WATER MUSIC 2004 Shannon SRD 38
Downeast**



**WATER MUSIC 2004 Shannon SRD 38
Downeast**



**WATER MUSIC 2004 Shannon SRD 38
Downeast**



**WATER MUSIC 2004 Shannon SRD 38
Downeast**



**WATER MUSIC 2004 Shannon SRD 38
Downeast**



**WATER MUSIC 2004 Shannon SRD 38
Downeast**



**WATER MUSIC 2004 Shannon SRD 38
Downeast**



**WATER MUSIC 2004 Shannon SRD 38
Downeast**



**WATER MUSIC 2004 Shannon SRD 38
Downeast**



**WATER MUSIC 2004 Shannon SRD 38
Downeast**



**WATER MUSIC 2004 Shannon SRD 38
Downeast**



**WATER MUSIC 2004 Shannon SRD 38
Downeast**



**WATER MUSIC 2004 Shannon SRD 38
Downeast**



CONTACTS

Andrey Shestakov, leading yacht broker of the sales department of Shestakov Yacht Sales Inc. Shestakov Yacht Sales Inc., the official representative of the Miami/Fort Lauderdale FL headquarters.

Contact details

Email: andrey@shestakovyachtsales.com

Web: shestakovyachtsales.com/en/

Telephones

USA: +1(954)274-4435

Office hours

Monday – Saturday: **9:00 - 21:00** EDT

Sunday: **closed**

Address



Harbour Towne Marina, 850 NE 3rd St,
STE 213, Dania, FL 33004