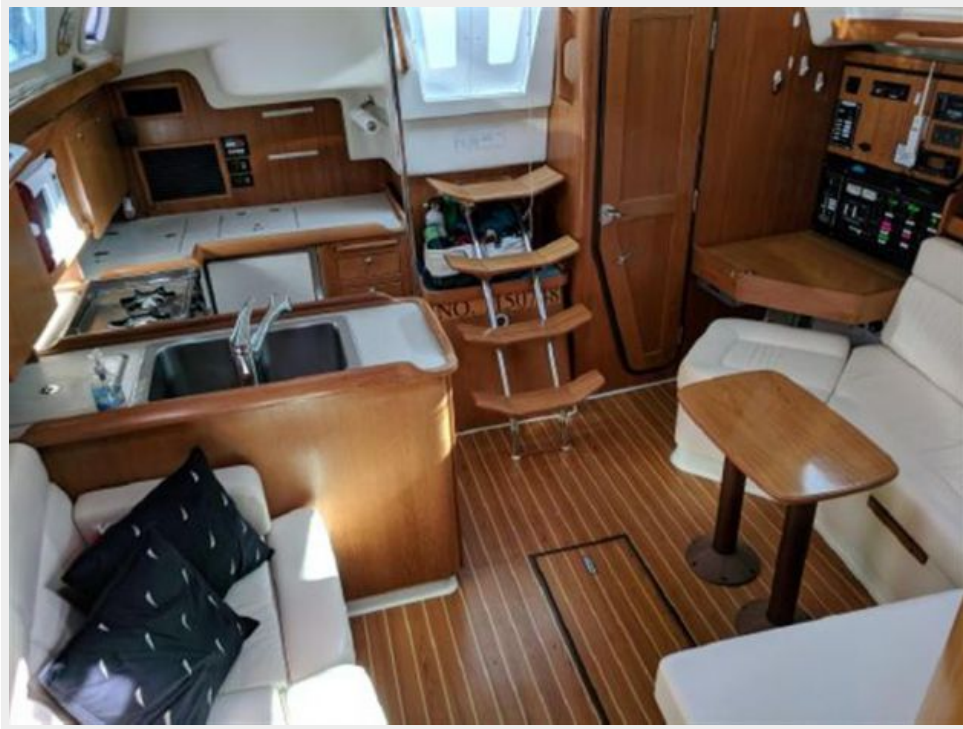


## TIKI — CATALINA



**Builder:** CATALINA

**Year Built:** 2004

**Model:** Cruising Sailboat

**Price:** PRICE ON APPLICATION

**Location:** United States

**LOA:** 35' 0" (10.67m)

**Beam:** 13' 0" (3.96m)

**Max Draft:** 4' 6" (1.37m)

Our experienced yacht broker, Andrey Shestakov, will help you choose and buy a yacht that best suits your needs Tiki — CATALINA from our catalogue. Presently, at Shestakov Yacht Sales Inc., we have a wide variety of yachts available on our sale's list. We also work in close contact with all the big yacht manufacturers from all over the world.

If you would like to buy a yacht Tiki — CATALINA or would like help answering any questions concerning purchasing, selling or chartering a yacht, please call +1(954)274-4435

---

# TABLE OF CONTENTS

---

TABLE OF CONTENTS	2
SPECIFICATIONS	3
Overview	3
Basic Information	8
Dimensions	9
Speed, Capacities and Weight	9
Accommodations	9
Hull and Deck Information	9
Engine Information	9
PHOTOS	10
CONTACTS	14
Contact details	14
Telephones	14
Office hours	14
Address	14

---

# SPECIFICATIONS

---

## Overview

---

**Tiki** is an exceptionally clean and well equipped version of the extremely popular Catalina 350. She has been pampered by her current owner, and has been constantly upgraded and maintained. She is clean, spacious, comfortable, and shows very minimal use. Her genset, twin air conditioners, twin refrigerator/ freezers, new electronics, newer canvas, and comfortable spacious accommodations make her an ideal family cruiser.

**Tiki** was recently retrofitted with a "Gulf Coast Rig" in order to make cruising the Florida Gulf Coast ICW and much of the America's Great Loop a reality. She can transit all of the areas fixed 50' ICW bridges. She can even transit the Destin Pass Bridge that would normally restrict most vessels of her size. Her owner reports that the new rig has had no impact on her sailing performance compared to the original setup.

See the full specs for complete details on this fantastic cruiser.

### Highlights Include:

- **47' Mast Height. Perfect for the Gulf Coast!**
- **Universal M35B Diesel with only 490 hours (Exceptionally Clean!)**
- **4KW Fischer Panda Genset (200 Hours)**
- **(2) Two Separate Air Conditioning Units (10,000 and 17,000 BTU)**
- **(2) Two 12V Isotherm Refrigerator/Freezer Units with digital thermostats (NEW 2016!)**
- **Complete Recent Modern Electronics (Raymarine MFD, Autopilot, AIS, Wind, Depth, Speed)**
- **KVH M1DX HD Television Satellite Receiver (NEW 2015!)**
- **Complete Exterior Canvas (NEW 2015!)**
- **Kato Dinghy Davits (NEW 2015!)**
- **Cream Ultra Leather Upholstery**
- **In Mast Furling Mainsail**
- **11' Inflatable Tender With Chaps and Lehr 5HP Propane Outboard (NEW 2015!)**

Boat Name TIKI Specs Builder: Catalina Designer: Butler/Douglas Keel: Wing Dimensions LOA: 36 ft 5 in Beam: 13 ft 0 in LWL: 31 ft 3 in Length on Deck: 35 ft 3 in Maximum Draft: 4 ft 6 in Displacement: 14000 lbs Ballast: 6212 lbs Engines Engine 1: Engine Brand: Universal Year Built: 2004 Engine Model: M35B Engine Type: Inboard Engine/Fuel Type: Diesel Engine Hours: 490 Propeller: Folding propeller Drive Type: Direct Drive Engine Power: 35 HP Tanks Fresh Water Tanks: (117 Gallons) Fuel Tanks: (39 Gallons) Holding Tanks: (22 Gallons) Accommodations Number of cabins: 2 Number of heads: 1

### Accommodations

---

Gorgeous open salon with 6' 9" headroom, two private cabins + large head. Owner berth forward has easy access from both sides of the inner spring mattress bed, shelf storage, direct access to head, next aft is the spacious head with separate shower stall, vanity and electric marine head, hanging locker opposite. The starboard side of the salon has two chairs with cocktail table (convertible to straight settee) followed by galley just aft. The port side has a straight settee with angled end to serve as nav-station seat, plus a free standing bench seat. There are two tables, a large dinette to feed a crowd and a smaller cocktail table that opens up the salon considerably. The port dinette. can be converted to full size berth. The aft cabin is to port and has a large athwart-ships berth with innerspring mattress, hanging locker and shelves.

- Cream Ultra Leather Interior (Excellent Condition)
- Interchangeable Salon Cocktail table
- Full Dinette Table with ultra-leather leather cover- Convertible to Berth
- Movable/ Foldable beach seat
- Starboard Settee Converts to Two Captain's Chairs with Coffee Table in Between
- Centerline Forward Berth with Storage Underneath, and Hanging Lockers to Port and Starboard
- Aft Berth with Dresser
- Teak and Holly Flooring
- LED Overhead Lighting
- Nav Station to Port
- 17,000 BTU Air Conditioner for Salon and aft Stateroom
- 10,000 BTU Air Conditioner for Forward Stateroom
- 12V Fans throughout

## Galley

- 117 Gallons of Fresh Water in 4 tanks. 29 Gallons More Than The Standard C-350.
- Isotherm Front and Top Loading Refrigeration with Digital Thermostat (NEW 2016)

- Isotherm Top Loading Freezer with Digital Thermostat (NEW 2016)
- Hillerange Propane Two Burner Stove/ Oven
- Stainless Steel Double Sink with hot/cold water
- Microwave Oven
- Solid Surface Countertops
- Plenty of Cabinet and Drawer Storage
- In Floor Storage
- Fold Out Trash Bin

## Head

- Separate Shower Stall With Folding Glass Door
- Access From Salon or Forward Stateroom
- Freshwater Electric Head (NEW 2015)
- Overhead Opening Hatch
- Mirrored medicine Cabinet with LED lighting
- Shower Sump Pump

## Electronics

- Raymarine A7 MFD/ Chartplotter (NEW 2014)
- Raymarine Autopilot + Wireless Remote
- Raymarine ST60 Wind, Depth, and Speed
- Standard Horizon VHF with AIS receiver
- Standard Horizon RAM Mic at helm (NEW 2015)
- Pioneer Stereo with Bluetooth (NEW 2014)
- KVH M1DX Satellite TV Receiver with pole Mount (NEW 2015)
- Acu-gage Tank Monitor

- 'Bad Boy' Long Range Internet Antenna with Onboard Wifi Network.
- Binnacle Mounted Helm Pod (NEW 2017)
- Digital Television Antenna
- Television in Salon
- Television in Forward Stateroom

## Engine and Mechanical

- Universal M35B Diesel (490 Hours- Super Clean!)
- MaxFold folding prop
- New Sherwood raw water pump - (NEW 2016)
- Heat exchanger serviced (NEW 2016)
- Fischer Panda 4KW Generator With Sound Shield - 200 hours
- Racor Fuel Filters for Main and Genset

## Electrical

- (2) 30A Shore Power Inlets
- Twin A/C Breaker Panels
- 12V Breaker Panel
- 4KW Panda Genset (200 hrs)
- Rotary Transfer Switch for Shore Power/ Genset
- (1) Rotary Aire 17,000 BTU reverse cycle air conditioner
- (1) Marine Aire 10,000 BTU reverse cycle air conditioner
- (2) 4D Batteries (NEW 2017!)
- Charles 30A Battery Charger
- Battery Selector Switch
- 50A Alternator

- 6 Gallon Water Heater

## Sails and Rigging

- Mast Height Reduced to 47', Perfect For The Gulf Coast. (NEW 2017!)
- Extra set of Jib Sheets
- Spinnaker Halyard
- In Mast Furling Mainsail - Excellent Condition
- 110% Genoa on Schaefer Roller Fuller- Excellent Condition
- All Lines Lead Aft to Cockpit - Great Condition
- Sails Shaped and Restitched For New Mast Height (NEW 2017)
- Radar Reflectors on Shrouds

## Cockpit

- Zarcor Folding Companionway Doors
- Dodger and Bimini with Removable Zippered Interconnect
- Drop Side Curtains that Completely Enclose the Cockpit (NEW 2015!)
- Fold Down Teak Cockpit Tables
- Full Set of Closed Cell Foam Cockpit and Stern Seat Cushions with Back Rests
- Covers for Binnacle and Cockpit Table
- Three Deep Lazarettes
- LPG Storage Locker
- Removable Seat for Access to Walk Through Transom
- Fold Down Swim Ladder

## Deck and Hull

- Kato Dinghy Davits (NEW 2015)
- Topside and Transom Professionally Buffed and Polished (2017)

- New Bottom Paint - Seahawk CuKote Dark Blue (2016)
- Hull Professionally Buffed and Waxed (2016)
- Sound Proofing Added to Aft cabin (2016)
- Stainless Steel Hardware and Handrails
- Stainless Portlights
- Stainless Hatches
- Maxwell 12V Windlass
- Rocna Anchor w/ Rode
- CQR Anchor w/ Rode
- Forward Deck Light

### **Additional Gear**

- 11' Dinghy with Chaps Suncover (NEW 2015)
- 5HP Lehr Propane Outboard (NEW 2015!)
- Outboard Motor Storage Bracket
- Sunbrella Covers For Most Everything
- Magma Propane Grill
- Fenders and Docklines
- Safety Equipment

## **Basic Information**

---

**Category:** Cruising Sailboat

**Model Year:** 2004

**Year Built:** 2004

**Country:** United States



---

## Dimensions

---

**LOA:** 35' 0" (10.67m)

**LWL:** 31' 3" (9.53m)

**Beam:** 13' 0" (3.96m)

**Max Draft:** 4' 6" (1.37m)

---

## Speed, Capacities and Weight

---

**Displacement:** 14000 Pounds

**Water Capacity:** 117 Gallons

**Holding Tank:** 22 Gallons

**Fuel Capacity:** 39 Gallons

---

## Accommodations

---

**Total Cabins:** 2

---

## Hull and Deck Information

---

**Hull Material:** Fiberglass

---

## Engine Information

---

**Engines:** 1

**Manufacturer:** Universal

**Model:** M35B

**Engine Type:** Inboard

**Fuel Type:** Diesel

# PHOTOS









# CONTACTS

---

Andrey Shestakov, leading yacht broker of the sales department of Shestakov Yacht Sales Inc. Shestakov Yacht Sales Inc., the official representative of the Miami/Fort Lauderdale FL headquarters.

## Contact details

---

Email: [andrey@shestakovyachtsales.com](mailto:andrey@shestakovyachtsales.com)

Web: [shestakovyachtsales.com/en/](http://shestakovyachtsales.com/en/)

## Telephones

---

USA: +1(954)274-4435

## Office hours

---

Monday – Saturday: **9:00 - 21:00** EDT

Sunday: **closed**

## Address

---



Harbour Towne Marina, 850 NE 3rd St,  
STE 213, Dania, FL 33004