

## AMY LEIGH — PRINCESS YACHTS



**Судостроитель:** PRINCESS YACHTS

**Год постройки:** 2014

**Модель:** Моторная яхта

**Цена:** ЦЕНА ЯХТЫ ПО ЗАПРОСУ

**Местонахождение:** United States

**Длина общая:** 56' 0" (17.07m)

**Ширина:** 15' 7" (4.75m)

**Макс. осадка:** 4' 3" (1.30m)

**Крейс. скорость:** 27 Kts. (31 MPH)

**Макс. скорость:** 32 Kts. (37 MPH)

Купить Amy Leigh — PRINCESS YACHTS а также выбрать подходящую вам яхту из нашего каталога яхт вам поможет опытный яхтенный брокер Андрей Шестаков. На сегодняшний день компания Shestakov Yacht Sales Inc. имеет большое количество яхт в собственном списке продаж, а также тесно сотрудничает со всеми крупными яхтенными производителями по всему миру.

Для того чтобы купить яхту Amy Leigh — PRINCESS YACHTS а также проконсультироваться по любому вопросу связанному с покупкой, продажей, чартером яхт позвоните по телефону **+7(918)465-66-44**.

# ОГЛАВЛЕНИЕ

---

ОГЛАВЛЕНИЕ	2
ХАРАКТЕРИСТИКИ	6
Обзор	6
Основная информация	6
Размеры	6
Скорость, вместимость и масса	6
Размещение	6
Корпус и палуба	7
Информация о двигателе	7
ПОДРОБНОЕ ОПИСАНИЕ	8
Vessel Walkthrough	8
Main Features	8
Salon	8
Dinette	9
Galley	9
Master Stateroom	9
Master Head	10
Forward Guest Stateroom	10
Starboard Guest Stateroom	10
Guest Head	11
Crew Stateroom	11
Helm: Lower	11
Flybridge	11
Electronics	12
Electrical System	12
Mechanical Equipment	12
Engine Room	13
Cockpit	13

Decks	13
Hull	14
Exclusions	14
Исключения	14
Отказ от ответственности	14
<b>ФОТОГРАФИИ</b>	<b>15</b>
Salon	15
Salon	15
Salon	15
Salon	15
Salon	15
Salon	15
Galley	16
Galley	16
Dinette	16
Dinette	16
Master Stateroom	16
Master Stateroom	16
Master Stateroom	17
Master Stateroom	17
Master Stateroom	17
Master Stateroom	17
Master Stateroom	17
Master Head	17
Master Head	18
Master Head	18
Forward Stateroom	18
Forward Stateroom	18
Forward Stateroom	18

---

Forward Stateroom	18
Guest Stateroom	19
Guest Stateroom	19
Guest Head	19
Guest Stateroom	19
Guest Head	20
Laundry	20
Lower Helm	20
Lower Helm	20
Lower Helm	21
Flybridge	21
Flybridge	21
Flybridge	21
Flybridge	21
Bridge Deck	21
Bridge Deck	22
Bridge Deck	22
Bridge Deck	22
Bridge Deck	22
Bridge Deck	22
Bridge Deck	22
Bridge Deck	22
Bridge Deck	22
Bridge Deck	23
Aft Deck	23
Aft Deck	23
Aft Deck	23
Aft Deck	23
Aft Deck	23
Bow	24
Bow	24

---

---

Bow	24
Bow	24
Lazarette	24
Lazarette	24
Engine Room	25
Engine Room	25
Engine Room	25
Engine Room	25
Engine Room	25
Engine Room	25
Engine Room	25
Engine Room	26
Engine Room	26
Aft	26
Aft	26
AMY LEIGH	26
AMY LEIGH	26
КОНТАКТЫ	27
Контактная информация	27
Телефоны	27
Время работы	27
Адрес	27

# ХАРАКТЕРИСТИКИ

## Обзор

Amy Leigh is a super clean example of the popular 56 Princess Flybridge. She has only 273 hours on her quiet and powerful MAN 800 Common Rail engines. This one owner late model Princess is one of the very few that has ever come up on the pre-owned market with 3 elegant staterooms, Garmin Electronics, and Crew Quarters. This is a must see vessel in the 55 to 60 ft. flybridge sport yacht range. This yacht was built for the American Market so she comes with the support of Princess Yachts, USA.

## Основная информация

<b>Тип судна:</b> Моторная яхта	<b>Подкатегория:</b> Flybridge
<b>Модельный год:</b> 2014	<b>Год постройки:</b> 2014
<b>Страна:</b> United States	<b>Верх:</b> Bimini Top

## Размеры

<b>Длина общая:</b> 56' 0" (17.07m)	<b>Ширина:</b> 15' 7" (4.75m)
<b>Макс. осадка:</b> 4' 3" (1.30m)	

## Скорость, вместимость и масса

<b>Крейс. скорость:</b> 27 Kts. (31 MPH)	<b>Макс. скорость:</b> 32 Kts. (37 MPH)
<b>Водоизмещение:</b> 57700 Pounds	<b>Вместимость воды:</b> 156 Gallons
<b>Вместимость сточного бака:</b> 53 Gallons	<b>Объем топливного бака:</b> 700 Gallons

## Размещение

<b>Всего кают:</b> 3	<b>Всего ком. состава:</b> 2
<b>Каюты экипажа:</b> 1	

---

## Корпус и палуба

---

**Материал корпуса:** Fiberglass

**Материал палубы:** Teak

---

## Информация о двигателе

---

**Двигатели:** 2

**Производитель:** MAN

**Модель:** R6 800

**Тип двигателя:** Inboard

**Тип топлива:** Diesel

---

# ПОДРОБНОЕ ОПИСАНИЕ

---

## Vessel Walkthrough

---

The Princess 56 is one of the most popular Princess models ever built. She features a sleek sophisticated exterior profile and uncompromising performance. With the optional 800 MAN common rail diesels, this vessel comfortably cruises at a brisk 26-27 kts. and tops out close to 32. The exterior cockpit and Hydraulic swim platform feature, beautiful teak decking, and the expansive flybridge has comfortable seating for up to 10 guests, plus refrigeration and a wet bar/grill. Inside the salon, the owners and guests are treated to an exquisitely finished designer inspired interior featuring fine fabrics, tasteful accents, and satin finished walnut timber. The entire salon and galley area is surrounded by incredible views thru her oversize 360 degree panoramic windows. Her lower controls are expertly designed for form and function while guaranteeing comfort. Below decks you'll find a full beam master stateroom fit for a King & Queen, with private head, a centerline queen bed, VIP stateroom forward, and a third stateroom to starboard with side by side single beds. All of these staterooms are tastefully decorated with designer bedding, pillows, and fabrics as would be expected in a boat of this caliber and quality. Amy Leigh also has a single berth crew quarters accessed thru the aft of the boat. It is equipped with its own air conditioning system, head/shower combo, and window aft.

## Main Features

---

- 3 stateroom 2 head layout with crew quarters
- Optional MAN 800CRM engines and 17KW generator
- Satin walnut interior
- Bimini top
- Lower helm with side by side leather helm chairs featuring full electronics and instrumentation
- US spec Yacht built to exceed standards of the USCG and ABYC recommendations. US spec Princess Yachts have a greatly expanded scope of standard equipment when compared to Princess Yachts built for other parts of the world and are not built to comply with USCG and ABYC standards, regulations, or requirements.
- Garmin electronics suite including radar, chartplotter, and autopilot at both upper and lower stations
- Variable speed bow and stern thrusters
- Carpet runners throughout interior

## Salon

---

- U shaped sofa starboard with cocktail table



- Carpeted salon floor
- Love seat to port
- Premium audio system with Harmon Kardon blu-ray system
- 32" TV on lift
- Icemaker
- Window blinds
- Upgraded pillow package & salon upholstery w/additional throws
- Aft door curtain
- Fixed mounted Princess clock and barometer on aft bulkhead
- Dedicated lighted cocktail glass display cabinet
- Drinks refrigerator
- Triple stainless-steel framed sliding doors to cockpit

## Dinette

---

- U shaped dinette with gloss wood table
- Upgraded dinette upholstery
- Set of Princess fine china and cutlery for 6 with dedicated storage compartments

## Galley

---

- Upgraded full size stand up refrigerator with separate freezer within cabinetry
- Galley Avonite counters: Midnight sky
- Stainless-steel sink with Monobloc mixer tap
- Cutting board
- Garbage disposal
- 3 burner ceramic range with stainless-steel vented hood
- Microwave Convection oven
- Waste bin
- Additional drawer refrigerator

## Master Stateroom

---

- Large double bed with drawers below
- Wardrobe with shelves
- Dressing table
- Sofa
- Stereo radio mp3
- Overhead and individual berth lights
- En Suite head
- Panoramic windows port and starboard with opening portholes

- AC power receptacles
- Full length mirrored doors on closets
- Night stands on each side of bed
- Upholstered headboard
- 32" LED TV with Bose 235 Entertainment System
- Bed linens

---

## Master Head

---

- Electric freshwater toilet
- Full stall shower
- Avionite Counters: Kokoura
- Opening porthole
- Mirrored vanity with storage
- Storage under vanity
- 110V receptacles
- Tiled floor

---

## Forward Guest Stateroom

---

- Large double bed with drawers
- Wardrobe with shelves
- Vanity unit
- Storage lockers and drawers
- Deck hatch with screen and blind
- Overhead individual berth lights
- En Suite bathroom with day access
- Mirrored door on wardrobe
- 19" LED TV with radio/DVD player
- Bed linens

---

## Starboard Guest Stateroom

---

- Two full size single berths
- Wardrobe with shelf
- Optional electric double berth conversion
- Mirrored door on wardrobe
- 19" LED TV with radio/DVD player
- Overhead and individual berth lights
- Bed linens

---

## Guest Head

---

- Access from companionway and forward stateroom
- Opening porthole
- Mirrored vanity with storage
- Storage under vanity
- 110V receptacles
- Electric toilet
- Avionite Counters: Kokoura
- Tiled floor

---

## Crew Stateroom

---

- Single berth
- Storage space
- Overhead and individual berth lights
- Electric freshwater toilet and wash basin
- Air conditioned

---

## Helm: Lower

---

- Twin helm seats in cocoa leather
- Electrical distribution and breaker panel
- Captains seat adjustable fore and aft
- Clear chart flat at dash area
- Electric opening windows at helm position and port side
- Electronic engine controls
- Full engine instrumentation
- Garmin electronics suite
- Controls for bow and stern thruster, trim tabs, windscreen wiper
- Red night lighting overhead

---

## Flybridge

---

- Large seating area with teak table
- Wetbar with sink, electric barbecue, and refrigerated coolbox
- L-shaped seat converts to sunbed
- Speakers linked to salon stereo
- Custom windscreen between hardtop and venturi
- Full Garmin Electronics Suite
- Bow and stern thruster controls

- Side by side helm chairs
- Hatch to flybridge ladder
- Table umbrella
- Bimini top

---

## Electronics

---

- Garmin GPSMap 8212 chartplotter at lower & upper helm
- GMR604 xHD 6KW 4 ft. open array radar
- GM10 data repeaters for speed depth etc. upper and lower helms
- Garmin autopilot with control heads upper and lower helms
- Garmin VHF 300 handset at upper and lower helms
- Lumishore SMX 101-W white LED underwater lights 3600 Lumens (4)

---

## Electrical System

---

- 4 X heavy duty batteries for engine starting - new December, 2017
- 4 X heavy duty auxiliary house batteries - new December, 2017
- 60 amp battery charger charges both banks of batteries via an automatic switch charging system
- Remote battery master switches with control switch at main panel
- Polarity check system
- US compliant 120/240 volt /60 Hertz electrical system
- LED lighting throughout
- Voltage stabilizer transformer
- Galvonic isolator
- 17kw diesel generator with sound shield (Onan)
- 110 duplex receptacles throughout boat
- Electric shore power cable reel with 50 amp cable

---

## Mechanical Equipment

---

- Automatic electric bilge pumps (5)
- High capacity manual bilge pump with valve system and suction points in the same areas
- Twin fuel tanks with 700 gallon capacity
- Fuel fills on port and starboard side decks
- High capacity duplex fuel filters/water traps with audible and visual fuel contamination warning system
- Remote fuel cocks in cockpit locker
- Fuel gauges at lower helm console
- Central vacuum system

- Washer/dryer combo unit under stairs
- 4 bladed propellers in nickel, aluminum, bronze alloy
- Variable speed bow and stern thrusters with controls at upper and lower stations
- Electronic engine and gear shift controls
- Hot water heater, 19 US gallon
- Water gauge level

## Engine Room

---

- Twin MAN inline 6 cylinder 800 hp common rail diesel engines with 273 hours
- 17 KW Onan Generator with sound shield
- Engine room extractor fan
- Power assisted electro-hydraulic steering system with hydraulic back-up
- Dripless shaft seals
- Sea strainers on main engines and generator raw water pickups
- Engine room lighting
- Oil changing system for mains and generator
- Engine room access by hatch in cockpit floor

## Cockpit

---

- U shaped seating in upgraded upholstery (Movida Metallic)
- Teak cockpit table (folding with cup holders)
- Lockable gas strut assisted hatch to engine room and lazarette
- Transom gate leading to bathing platform
- Electro-hydraulic swim/bathing platform with 880 lb. capacity ready for chocks and dingy
- Cockpit cover
- Storage in cockpit wings
- Line chocks in corners
- Teak laid cockpit
- Teak ladder treads to flybridge
- Entry hatch for crew quarter

## Decks

---

- Reversible anchor winch with foredeck helm, flybridge and foredeck control switches
- Delta anchor, self stowing
- Stainless-steel cleats, fairleads, and handrails
- Fuel fills port and starboard
- Water fill
- Foredeck freshwater wash down

---

## Hull

---

- Modified deep vee hull with multiple lifting strakes for incredible performance
- Infused layout system for strength and weight savings

---

## Exclusions

---

- Owners' personal items
- Tender
- List provided upon request

---

## Исключения

---

При продаже яхты исключаются личные вещи владельца.

---

## Отказ от ответственности

---

Компания предоставляет описание судна или яхты добросовестно, но не может гарантировать точность этой информации, а также не ручается за техническое состояние. Покупатель должен проинструктировать своих агентов или оценщиков исследовать представленную информацию более подробно, по собственному желанию. Продажа судна или яхты, изменение цены или снятие с продажи будет происходить без предварительного уведомления.

# ФОТОГРАФИИ

Salon



Salon



Salon



Salon



Salon



Salon



**Galley**



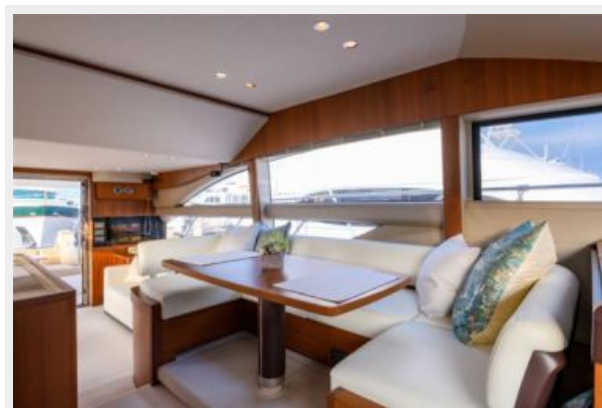
**Galley**



**Dinette**



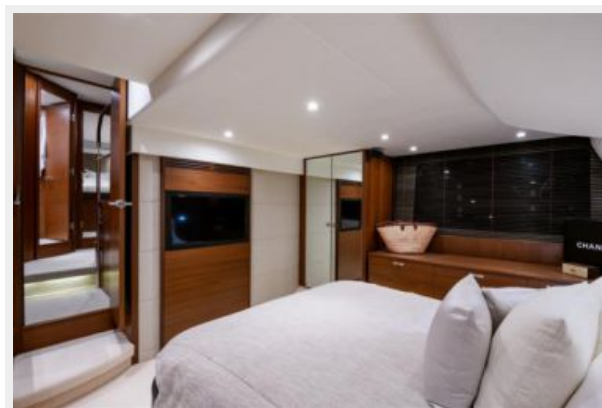
**Dinette**



**Master Stateroom**

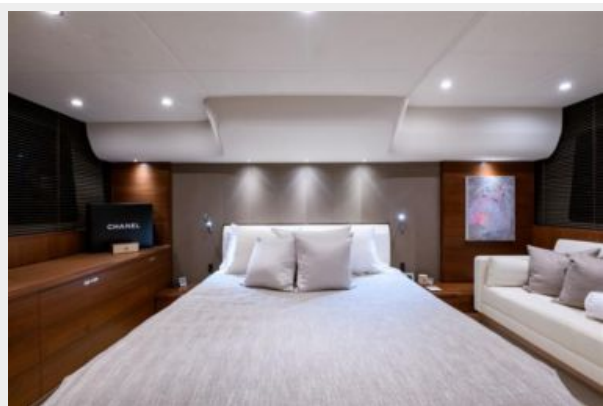


**Master Stateroom**

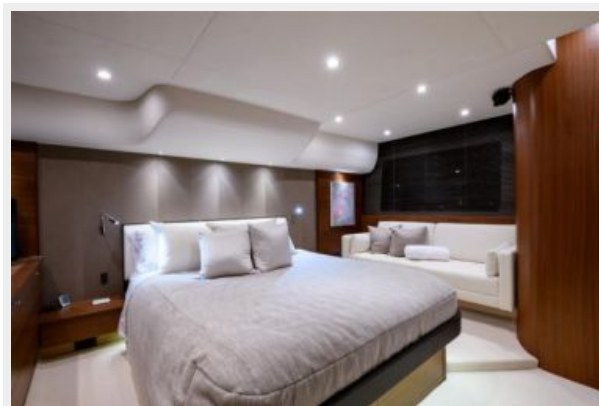




**Master Stateroom**



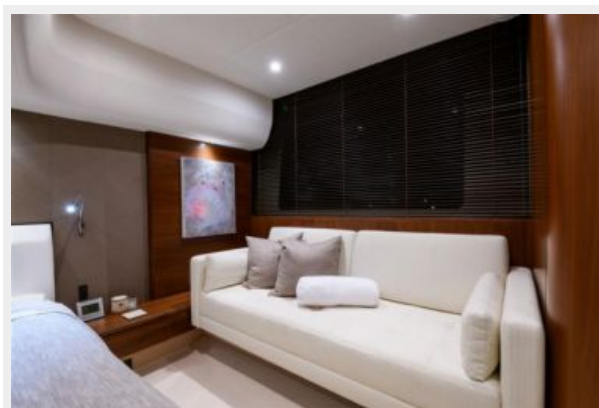
**Master Stateroom**



**Master Stateroom**



**Master Stateroom**



**Master Stateroom**



**Master Head**



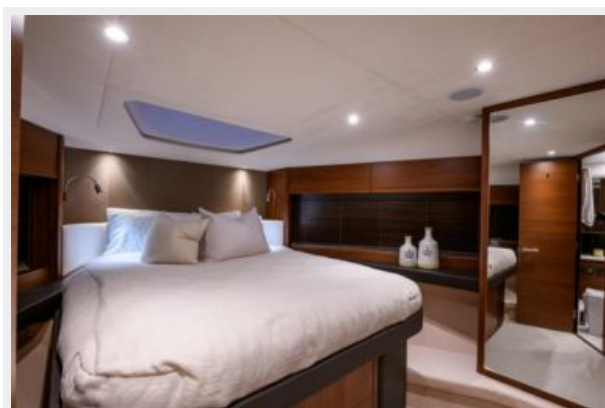
**Master Head**



**Master Head**



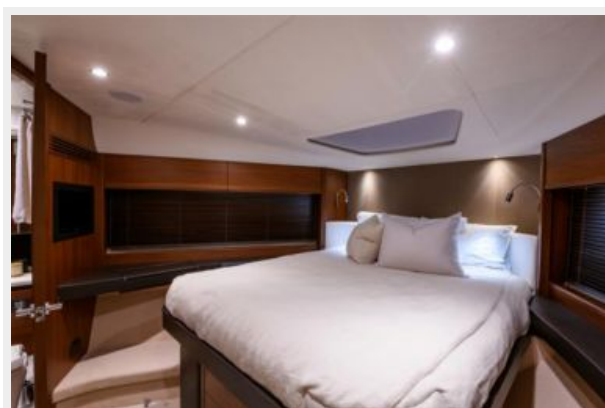
**Forward Stateroom**



**Forward Stateroom**



**Forward Stateroom**



**Forward Stateroom**



**Guest Stateroom**



**Guest Stateroom**



**Guest Head**



**Guest Stateroom**



**Guest Head**



**Laundry**



**Lower Helm**



**Lower Helm**



**Lower Helm**



**Flybridge**



**Flybridge**



**Flybridge**



**Flybridge**



**Bridge Deck**



**Bridge Deck**



**Bridge Deck**



**Bridge Deck**



**Bridge Deck**



**Bridge Deck**



**Bridge Deck**



**Bridge Deck**



**Aft Deck**



**Aft Deck**



**Aft Deck**



**Aft Deck**



**Aft Deck**



**Bow**



**Bow**



**Bow**



**Bow**



**Lazarette**



**Lazarette**





**Engine Room**



**Engine Room**



**Engine Room**



**Engine Room**



**Engine Room**



**Engine Room**



**Engine Room**



**Engine Room**



**Aft**



**Aft**



**AMY LEIGH**



**AMY LEIGH**



# КОНТАКТЫ

---

Андрей Шестаков (Andrey Shestakov) – ведущий яхтенный брокер отдела продаж яхт и судов компании Shestakov Yacht Sales Inc. Официальный представитель Shestakov Yacht Sales Inc. для русскоговорящих клиентов в центральном офисе компании в Майами/Форт Лодердейл/Флорида/США.

## Контактная информация

---

Email: [andrey@shestakovyachtsales.com](mailto:andrey@shestakovyachtsales.com)

Web: [shestakovyachtsales.com](http://shestakovyachtsales.com)

## Телефоны

---

Краснодарский край: **+7(918)465-66-44**

США, Майами, Флорида: **+1(954)274-4435**

## Время работы

---

Понедельник – Суббота: **9:00 - 21:00**  
EDT

Воскресенье: **Закрито**

## Адрес

---



Harbour Towne Marina, 850 NE 3rd St,  
STE 213, Dania, FL 33004