

SHOWTIME — BROWARD



Builder: BROWARD

Year Built: 1989

Model: Motor Yacht

Price: PRICE ON APPLICATION

Location: United States

LOA: 125' 0" (38.10m)

Beam: 24' 0" (7.32m)

Max Draft: 6' 2" (1.88m)

Cruise Speed: 12 Kts. (14 MPH)

Max Speed: 17 Kts. (20 MPH)

Our experienced yacht broker, Andrey Shestakov, will help you choose and buy a yacht that best suits your needs **SHOWTIME — BROWARD** from our catalogue. Presently, at Shestakov Yacht Sales Inc., we have a wide variety of yachts available on our sale's list. We also work in close contact with all the big yacht manufacturers from all over the world.

If you would like to buy a yacht **SHOWTIME — BROWARD** or would like help answering any questions concerning purchasing, selling or chartering a yacht, please call **+1(954)274-4435**

TABLE OF CONTENTS

TABLE OF CONTENTS	2
SPECIFICATIONS	3
Overview	3
Basic Information	3
Dimensions	3
Speed, Capacities and Weight	3
Accommodations	4
Hull and Deck Information	4
Engine Information	4
DETAILED INFORMATION	5
Walkthrough	5
Refit 2015	5
Mechanical Equipment	6
Communication, Navigation and Entertainment Systems	7
Galley and Laundry Equipment	7
Deck Equipment	8
Fire Fighting and Safety Equipment	8
Exclusions	9
Exclusions	9
Disclaimer	9
PHOTOS	10
CONTACTS	16
Contact details	16
Telephones	16
Office hours	16
Address	16

SPECIFICATIONS

Overview

Built in 1989 by Broward Marine SHOWTIME has been continually upgraded and cared for by her owners. She passed all her ABS certificates with flying colors. Her superb volume and size make her a must see. DYSID:3169861

Basic Information

Category: Motor Yacht

Sub Category: Tri-Deck

Model Year: 1989

Year Built: 1989

Refit Year: 1995

Country: United States

Coast Guard #: 957209/ San Diego

Dimensions

LOA: 125' 0" (38.10m)

LWL: 111' 0" (33.83m)

Beam: 24' 0" (7.32m)

Max Draft: 6' 2" (1.88m)

Speed, Capacities and Weight

Cruise Speed: 12 Kts. (14 MPH)

Cruise Speed RPM: 1700 Kts.

Cruise Speed Range: 2300

Max Speed: 17 Kts. (20 MPH)

Max Speed RPM: 2300 Kts.

Max Speed Range: 1275 Kts.

Displacement: 282 Pounds

Gross Tonnage: 294 Pounds

Water Capacity: 12900 Gallons

Fuel Capacity: 10500 Gallons

Accommodations

Total Cabins: 4

Sleeps: 8

Crew Cabin: 3

Crew Sleeps: 6

Hull and Deck Information

Hull Material: Aluminum

Deck Material: Teak over Aluminum

Exterior Designer: Broward Marine

Interior Designer: Susan Puelo

Engine Information

Engines: 2

Manufacturer: Detroit Diesel

Model: 16V92TAM

Engine Type: Inboard

Fuel Type: Diesel

DETAILED INFORMATION

Walkthrough

SHOWTIME was built by Broward Marine in 1989 with refits in 1995 and 2015. She was the first Broward to be ABS certified and remains fully in class today. As soon as you walk on board you are immediately struck with her spaciousness, which is much more than you would expect from a vessel of this size. Her galley down configuration allows for an impressive Master suite forward on the main deck that features a King size bed, his and her en-suite bathrooms, vaulted ceiling, large lounge area, dressing table and walk-in cedar closet. The Starboard guest entrance opens into a nice sized lobby which leads either forward to the master suite, up to the bridge deck and sky lounge or aft to the dining salon. To starboard just before the glass door to the open main salon is a wine station containing wine racks, Kedco wine refrigerator and lighted glass display cabinet. A day head is also located in this area. Walking aft into the full beam salon there is a dining table with seating for eight guests. The dining table also has an automated leaf which easily converts the table into a smaller more intimate table at the touch of a button. Built-in cabinetry finished in lacquered wood provides plenty of storage for china and linens as well as doubling as a buffet station for meal times. The main salon has soft comfortable seating recently re-upholstered in soothing cream hues and a large curved TV in the corner for movie nights. Through the aft deck doors is a spacious deck area with seating, dining and a fully equipped wet bar. The working deck area is tucked behind this deck above the swim platform and lazarette. Back inside a curved staircase from the main salon takes you down to the lower deck where three guest suites are found off a central lobby. The forward starboard cabin has 2 twin beds and en-suite bathroom with Jacuzzi Tub, the port side guest stateroom has a queen bed, hanging lockers, TV and en suite bathroom with Jacuzzi as well as a small sitting area. Aft is the VIP stateroom which offers a King size bed, large en suite bathroom with dressing table double sinks and Jacuzzi tub. On the bridge deck behind the wheelhouse and Captain's office/bunk room is the sky lounge. Sure to be the hub for guests gathering for pre-dinner drinks. This area has a full wet bar with barstools, flat screen TV and comfortable lounge area. Heading aft to the boat deck which is designed to be the center of activity with plentiful sunning spaces as well as an optional awning for those seeking some shade. Continuing upwards is the Sun deck with more seating beneath the yachts communication arch. Formally a spot that contained a Hot tub (plumbing and wiring though hidden remain intact) this space now allows for a fantastic view of the sunset or perhaps even 4th of July fireworks.

Refit 2015

Full Paint Job completed using awl grip 2000 paint matterhorn white as well as antifouling paint from the waterline to the keel and replacing all underwater zincs.

Engine Room

- Port Transmission completely rebuilt

- Cutlass Bearings replaced
- Engine Mounts replaced
- Engine/ shaft alignment
- 3 x Hot Water tanks replaced

TV & Audio

- 52" Sony TV - Master
- 48" Samsung HDTV - Sky lounge
- 65" Samsung HDTV - Main Salon
- Denon AV receivers - Master, Sky lounge and Main Salon

Pilot House

- Class A- AIS transmitter and receiver Installed

Interior

- Wall and overhead panels replaced - Main Salon, Foyer and Sky lounge
- Recovered bar stalls - Sky lounge
- Recovered bar panel and arm rest - Sky lounge
- Replaced carpet - Main Salon and Sky Lounge
- Recovered main salon couches and chairs
- New Dining chairs x 8
- New Faucets - Master and VIP
- New nickel metal plating on ships bell, horns, anchor windlass, aft capstans & master suite sinks
- New gold metal plating on foyer lighting fixtures, main salon coffee tables & day head faucet
- New wall paper in day head and master bath starboard

CAPTAINS NOTES: Just one year ago Showtime completed a combination of three ABS inspections all at one time. Annual, periodical and special tail shaft survey. There are over 350 individual items checked and tested, especially a die check penetration in all shaft key way areas. We successfully passed all three inspections with no outstanding items to be found. In the past seven years we have successfully passed every ABS inspection without any outstanding items and stand strongly in classification.

Mechanical Equipment

Engines/maneuvering controlled from the main helm station or wing controls port & starboard of bridge deck. Engine Room

- (2) Detroit Diesel 16V92TAM /1400Hp, installed 1995 rebuilt 2003

- Gearbox ZF ratio 2.5 - 1
- Propeller from Lips
- (2) 80Kw Northern Lights M668T31 - 240V single phase/60Hz output
- Consumption 75-80 gallons per day per generator
- (2) ASEA 3 phase 100amp, 36 KVA, 180-520 VAC 47-63 Hz Shore power converters
- 24V Main engine starting battery
- 12V Generator starting battery
- 12V Generator service battery
- 12V Emergency battery
- AC - Marine Air BTU 300,000/ 25 tons
- Sea Recovery watermakers
- NAIAD 301 stabilizers
- HPS/ 85hp Bow thruster
- Alpha Laval fuel filters
- Goulds fresh water system
- Wagner Steering system

Communication, Navigation and Entertainment Systems

Communication Systems

- Portable Sat Phone
- (2) VHF ICOM ICM 100 fixed
- (6) handheld Horizon CNB230

Navigation Systems

- (2) Furuno 1510 Radar with (72 mile range)
- Plath Navi Pilot II Auto pilot
- SeaPlath Gyrocompass
- B & G Hercules 390 Depth Sounder
- (2) Navigation Laptop

Entertainment Systems

- Samsung flat Screen TV - Sky lounge
- Sony flat screen TV - Master Stateroom
- Sony curved TV - Main Salon
- Denon A/V system
- Direct TV
- SAT TV

Galley and Laundry Equipment

Main Galley Equipment

- Thermador Range
- Thermador Vent Hood
- Maytag double oven
- Magic Chef Microwave
- Sub-Zero refrigerator (1) full (2) half size
- Sub-Zero freezer
- Chest freezer

Pantry Equipment

- (2) Breadwarmers
- Maytag dishwasher
- Kitchen Aid Icemaker
- Compactor
- GE Microwave
- Sub-Zero refrigerator
- Sub-Zero freezer
- Kedco Wine Cooler

Laundry Equipment

- (3) Maytag washers
- (3) Maytag dryers

Deck Equipment

- (2) 7,500 lb Ideal Anchor Windlass system
- (2) 350 lb Anchors Pool-N
- (3) Fortress Anchors
- 1/2" x 400 and 1/2" x 350 Anchor Chain
- (2) Ideal Deck Capstans - aft deck
- Marquipt main tender Davits 1500 lbs
- Marquipt Stern boarding gangway, 12' manual with extension
- Spare parts for every component

Fire Fighting and Safety Equipment

Fire Fighting Equipment

- (8) Fire, heat, smoke detectors - crewmess, galley, engine room, pantry, guest accommodations and pilothouse
- (2) Fire halon systems - engine room

- (15) Portable halon/ portable CO2 Fire extinguishers throughout yacht
- (5) Seawater fire fighting stations - engine room, port entrance, aft deck, boat deck, guest laundry

Safety Equipment

- (2) Elliot Liferrafts - 10 persons each
- (2) Life rings
- (1) EPIRB ACR 406 Mhz RLB-23
- AIS - Class A
- Flares
- Medical Kit including Oxygen and Defribulator

Exclusions

Does not include owner's personal effects or tender.

Exclusions

Owner's personal belongings.

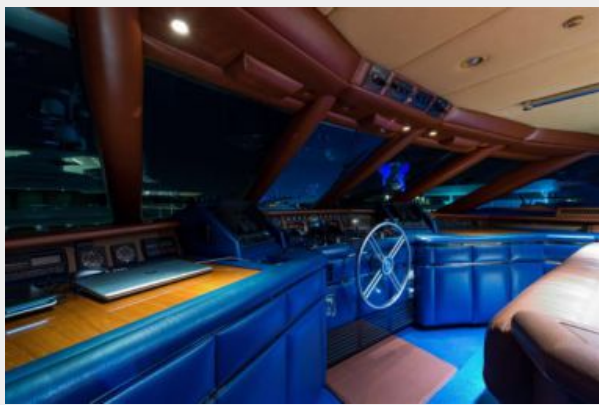
Disclaimer

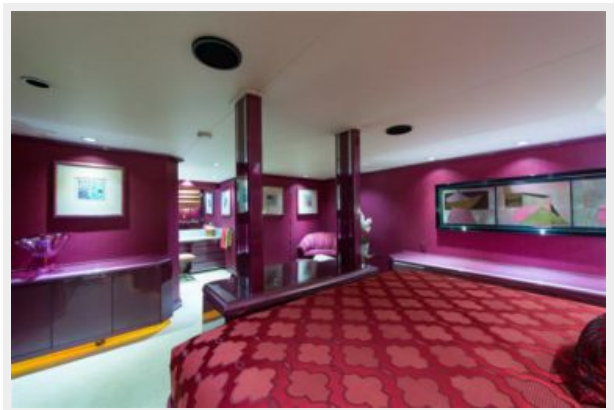
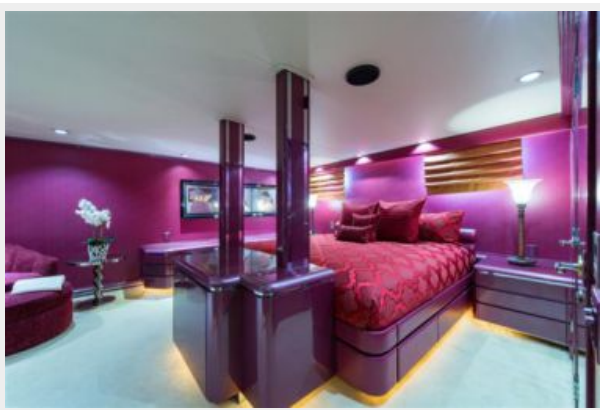
The Company offers the details of this vessel or yacht in good faith but cannot guarantee or warrant the accuracy of this information nor warrant the condition of the vessel. A buyer should instruct his representatives, agents, or his surveyors, to investigate such details as the buyer desires validated. This vessel or yacht is offered subject to prior sale, price change, or withdrawal without notice.

PHOTOS













CONTACTS

Andrey Shestakov, leading yacht broker of the sales department of Shestakov Yacht Sales Inc. Shestakov Yacht Sales Inc., the official representative of the Miami/Fort Lauderdale FL headquarters.

Contact details

Email: andrey@shestakovyachtsales.com

Web: shestakovyachtsales.com/en/

Telephones

USA: +1(954)274-4435

Office hours

Monday – Saturday: **9:00 - 21:00** EDT

Sunday: **closed**

Address



Harbour Towne Marina, 850 NE 3rd St,
STE 213, Dania, FL 33004