

## SHOWTIME — BROWARD



**Судостроитель:** BROWARD

**Год постройки:** 1989

**Модель:** Моторная яхта

**Цена:** **ЦЕНА ЯХТЫ ПО ЗАПРОСУ**

**Местонахождение:** United States

**Длина общая:** 125' 0" (38.10m)

**Ширина:** 24' 0" (7.32m)

**Макс. осадка:** 6' 2" (1.88m)

**Крейс. скорость:** 12 Kts. (14 MPH)

**Макс. скорость:** 17 Kts. (20 MPH)

Купить **SHOWTIME — BROWARD** а также выбрать подходящую вам яхту из нашего каталога яхт вам поможет опытный яхтенный брокер Андрей Шестаков. На сегодняшний день компания **Shestakov Yacht Sales Inc.** имеет большое количество яхт в собственном списке продаж, а также тесно сотрудничает со всеми крупными яхтенными производителями по всему миру.

Для того чтобы купить яхту **SHOWTIME — BROWARD** а также проконсультироваться по любому вопросу связанному с покупкой, продажей, чартером яхт позвоните по телефону **+7(918)465-66-44**.

# ОГЛАВЛЕНИЕ

ОГЛАВЛЕНИЕ	2
ХАРАКТЕРИСТИКИ	3
Обзор	3
Основная информация	3
Размеры	3
Скорость, вместимость и масса	3
Размещение	4
Корпус и палуба	4
Информация о двигателе	4
ПОДРОБНОЕ ОПИСАНИЕ	5
Walkthrough	5
Refit 2015	5
Mechanical Equipment	6
Communication, Navigation and Entertainment Systems	7
Galley and Laundry Equipment	7
Deck Equipment	8
Fire Fighting and Safety Equipment	8
Exclusions	9
Исключения	9
Отказ от ответственности	9
ФОТОГРАФИИ	10
КОНТАКТЫ	16
Контактная информация	16
Телефоны	16
Время работы	16
Адрес	16

# ХАРАКТЕРИСТИКИ

## Обзор

Built in 1989 by Broward Marine SHOWTIME has been continually upgraded and cared for by her owners. She passed all her ABS certificates with flying colors. Her superb volume and size make her a must see. DYSID:3169861

## Основная информация

Тип судна: Моторная яхта

Подкатегория: Tri-Deck

Модельный год: 1989

Год постройки: 1989

Год обновления: 1995

Страна: United States

Номер регистрации в береговой охране: 957209/ San Diego

## Размеры

Длина общая: 125' 0" (38.10m)

Длина по ватерлинии: 111' 0" (33.83m)

Ширина: 24' 0" (7.32m)

Макс. осадка: 6' 2" (1.88m)

## Скорость, вместимость и масса

Крейс. скорость: 12 Kts. (14 MPH)

Крейсерская скорость поворота: 1700 Kts.

Дальность на крейсерской скорости: 2300

Макс. скорость: 17 Kts. (20 MPH)

Макс. скорость поворота: 2300 Kts.

Дальность на макс. скорости: 1275 Kts.

Водоизмещение: 282 Pounds

Чистый вес: 294 Pounds

Вместимость воды: 12900 Gallons

Объем топливного бака: 10500 Gallons

## Размещение

---

Всего кают: 4

Спальные места: 8

Каюты экипажа: 3

Спальных мест экипажа: 6

## Корпус и палуба

---

Материал корпуса: Aluminum

Материал палубы: Teak over Aluminum

Дизайнер экстерьера: Broward Marine

Дизайнер интерьера: Susan Puelo

## Информация о двигателе

---

Двигатели: 2

Производитель: Detroit Diesel

Модель: 16V92TAM

Тип двигателя: Inboard

Тип топлива: Diesel

---

# ПОДРОБНОЕ ОПИСАНИЕ

---

## Walkthrough

---

SHOWTIME was built by Broward Marine in 1989 with refits in 1995 and 2015. She was the first Broward to be ABS certified and remains fully in class today. As soon as you walk on board you are immediately struck with her spaciousness, which is much more than you would expect from a vessel of this size. Her galley down configuration allows for an impressive Master suite forward on the main deck that features a King size bed, his and her en-suite bathrooms, vaulted ceiling, large lounge area, dressing table and walk-in cedar closet. The Starboard guest entrance opens into a nice sized lobby which leads either forward to the master suite, up to the bridge deck and sky lounge or aft to the dining salon. To starboard just before the glass door to the open main salon is a wine station containing wine racks, Kedco wine refrigerator and lighted glass display cabinet. A day head is also located in this area. Walking aft into the full beam salon there is a dining table with seating for eight guests. The dining table also has an automated leaf which easily converts the table into a smaller more intimate table at the touch of a button. Built-in cabinetry finished in lacquered wood provides plenty of storage for china and linens as well as doubling as a buffet station for meal times. The main salon has soft comfortable seating recently re-upholstered in soothing cream hues and a large curved TV in the corner for movie nights. Through the aft deck doors is a spacious deck area with seating, dining and a fully equipped wet bar. The working deck area is tucked behind this deck above the swim platform and lazarette. Back inside a curved staircase from the main salon takes you down to the lower deck where three guest suites are found off a central lobby. The forward starboard cabin has 2 twin beds and en-suite bathroom with Jacuzzi Tub, the port side guest stateroom has a queen bed, hanging lockers, TV and en suite bathroom with Jacuzzi as well as a small sitting area. Aft is the VIP stateroom which offers a King size bed, large en suite bathroom with dressing table double sinks and Jacuzzi tub. On the bridge deck behind the wheelhouse and Captain's office/bunk room is the sky lounge. Sure to be the hub for guests gathering for pre-dinner drinks. This area has a full wet bar with barstools, flat screen TV and comfortable lounge area. Heading aft to the boat deck which is designed to be the center of activity with plentiful sunning spaces as well as an optional awning for those seeking some shade. Continuing upwards is the Sun deck with more seating beneath the yachts communication arch. Formally a spot that contained a Hot tub (plumbing and wiring though hidden remain intact) this space now allows for a fantastic view of the sunset or perhaps even 4th of July fireworks.

## Refit 2015

---

Full Paint Job completed using awl grip 2000 paint matterhorn white as well as antifouling paint from the waterline to the keel and replacing all underwater zincs.

### Engine Room

- Port Transmission completely rebuilt

- Cutlass Bearings replaced
- Engine Mounts replaced
- Engine/ shaft alignment
- 3 x Hot Water tanks replaced

#### TV & Audio

- 52" Sony TV - Master
- 48" Samsung HDTV - Sky lounge
- 65" Samsung HDTV - Main Salon
- Denon AV receivers - Master, Sky lounge and Main Salon

#### Pilot House

- Class A- AIS transmitter and receiver Installed

#### Interior

- Wall and overhead panels replaced - Main Salon, Foyer and Sky lounge
- Recovered bar stalls - Sky lounge
- Recovered bar panel and arm rest - Sky lounge
- Replaced carpet - Main Salon and Sky Lounge
- Recovered main salon couches and chairs
- New Dining chairs x 8
- New Faucets - Master and VIP
- New nickel metal plating on ships bell, horns, anchor windlass, aft capstans & master suite sinks
- New gold metal plating on foyer lighting fixtures, main salon coffee tables & day head faucet
- New wall paper in day head and master bath starboard

CAPTAINS NOTES: Just one year ago Showtime completed a combination of three ABS inspections all at one time. Annual, periodical and special tail shaft survey. There are over 350 individual items checked and tested, especially a die check penetration in all shaft key way areas. We successfully passed all three inspections with no outstanding items to be found. In the past seven years we have successfully passed every ABS inspection without any outstanding items and stand strongly in classification.

## Mechanical Equipment

---

Engines/maneuvering controlled from the main helm station or wing controls port & starboard of bridge deck. Engine Room

- (2) Detroit Diesel 16V92TAM /1400Hp, installed 1995 rebuilt 2003

- Gearbox ZF ratio 2.5 - 1
- Propeller from Lips
- (2) 80Kw Northern Lights M668T31 - 240V single phase/60Hz output
- Consumption 75-80 gallons per day per generator
- (2) ASEA 3 phase 100amp, 36 KVA, 180-520 VAC 47-63 Hz Shore power converters
- 24V Main engine starting battery
- 12V Generator starting battery
- 12V Generator service battery
- 12V Emergency battery
- AC - Marine Air BTU 300,000/ 25 tons
- Sea Recovery watermakers
- NAIAD 301 stabilizers
- HPS/ 85hp Bow thruster
- Alpha Laval fuel filters
- Goulds fresh water system
- Wagner Steering system

---

## Communication, Navigation and Entertainment Systems

---

### Communication Systems

- Portable Sat Phone
- (2) VHF ICOM ICM 100 fixed
- (6) handheld Horizon CNB230

### Navigation Systems

- (2) Furuno 1510 Radar with (72 mile range)
- Plath Navi Pilot II Auto pilot
- SeaPlath Gyrocompass
- B & G Hercules 390 Depth Sounder
- (2) Navigation Laptop

### Entertainment Systems

- Samsung flat Screen TV - Sky lounge
- Sony flat screen TV - Master Stateroom
- Sony curved TV - Main Salon
- Denon A/V system
- Direct TV
- SAT TV

---

## Galley and Laundry Equipment

---

## Main Galley Equipment

- Thermador Range
- Thermador Vent Hood
- Maytag double oven
- Magic Chef Microwave
- Sub-Zero refrigerator (1) full (2) half size
- Sub-Zero freezer
- Chest freezer

## Pantry Equipment

- (2) Breadwarmers
- Maytag dishwasher
- Kitchen Aid Icemaker
- Compactor
- GE Microwave
- Sub-Zero refrigerator
- Sub-Zero freezer
- Kedco Wine Cooler

## Laundry Equipment

- (3) Maytag washers
- (3) Maytag dryers

## Deck Equipment

---

- (2) 7,500 lb Ideal Anchor Windlass system
- (2) 350 lb Anchors Pool-N
- (3) Fortress Anchors
- 1/2" x 400 and 1/2" x 350 Anchor Chain
- (2) Ideal Deck Capstans - aft deck
- Marquipt main tender Davits 1500 lbs
- Marquipt Stern boarding gangway, 12' manual with extension
- Spare parts for every component

## Fire Fighting and Safety Equipment

---

### Fire Fighting Equipment

- (8) Fire, heat, smoke detectors - crewmess, galley, engine room, pantry, guest accommodations and pilothouse
- (2) Fire halon systems - engine room



- (15) Portable halon/ portable CO2 Fire extinguishers throughout yacht
- (5) Seawater fire fighting stations - engine room, port entrance, aft deck, boat deck, guest laundry

### Safety Equipment

- (2) Elliot Liferrafts - 10 persons each
- (2) Life rings
- (1) EPIRB ACR 406 Mhz RLB-23
- AIS - Class A
- Flares
- Medical Kit including Oxygen and Defribulator

## Exclusions

---

Does not include owner's personal effects or tender.

## Исключения

---

При продаже яхты исключаются личные вещи владельца.

## Отказ от ответственности

---

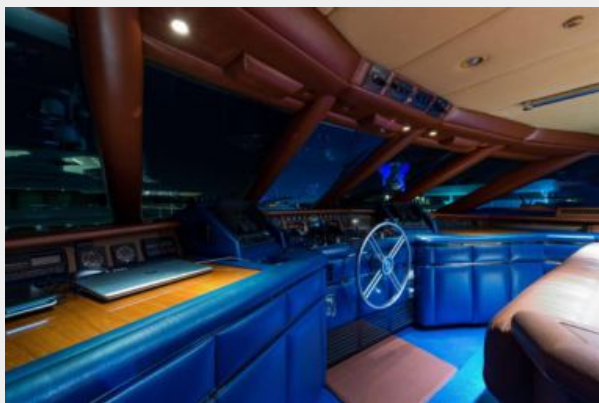
Компания предоставляет описание судна или яхты добросовестно, но не может гарантировать точность этой информации, а также не ручается за техническое состояние. Покупатель должен проинструктировать своих агентов или оценщиков исследовать представленную информацию более подробно, по собственному желанию. Продажа судна или яхты, изменение цены или снятие с продажи будет происходить без предварительного уведомления.

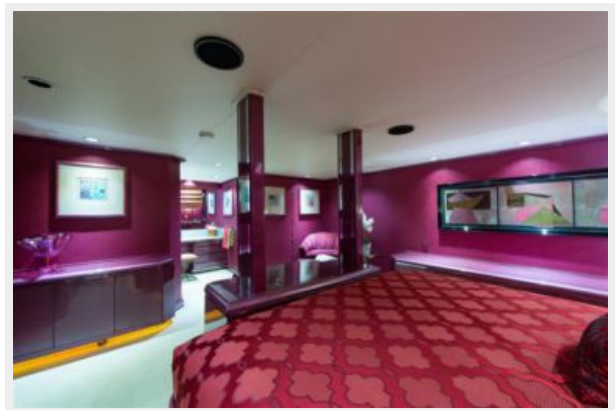
# ФОТОГРАФИИ



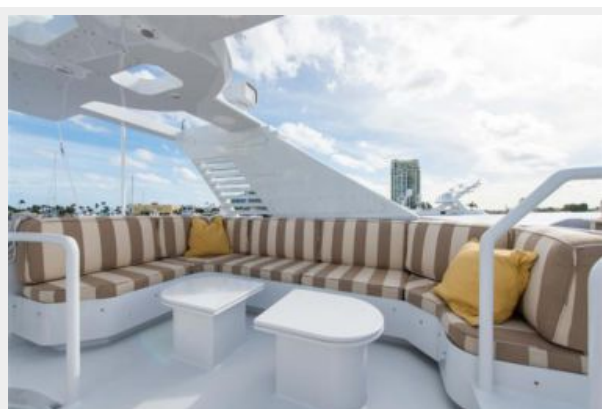














# КОНТАКТЫ

---

Андрей Шестаков (Andrey Shestakov) – ведущий яхтенный брокер отдела продаж яхт и судов компании Shestakov Yacht Sales Inc. Официальный представитель Shestakov Yacht Sales Inc. для русскоговорящих клиентов в центральном офисе компании в Майами/Форт Лодердейл/Флорида/США.

## Контактная информация

---

Email: [andrey@shestakovyachtsales.com](mailto:andrey@shestakovyachtsales.com)

Web: [shestakovyachtsales.com](http://shestakovyachtsales.com)

## Телефоны

---

Краснодарский край: **+7(918)465-66-44**

США, Майами, Флорида: **+1(954)274-4435**

## Время работы

---

Понедельник – Суббота: **9:00 - 21:00**  
EDT

Воскресенье: **Закрито**

## Адрес

---



Harbour Towne Marina, 850 NE 3rd St,  
STE 213, Dania, FL 33004