

## THEA — AZIMUT



**Судостроитель:** [AZIMUT](#)

**Год постройки:** 2018

**Модель:** Моторная яхта

**Цена:** ЦЕНА ЯХТЫ ПО ЗАПРОСУ

**Местонахождение:** United States

**Длина общая:** 80' 0" (24.38m)

**Ширина:** 20' 3" (6.17m)

**Макс. осадка:** 5' 8" (1.73m)

**Крейс. скорость:** 26 Kts. (30 MPH)

**Макс. скорость:** 31 Kts. (36 MPH)

Купить **THEA — AZIMUT** а также выбрать подходящую вам яхту из нашего каталога яхт вам поможет опытный яхтенный брокер Андрей Шестаков. На сегодняшний день компания **Shestakov Yacht Sales Inc.** имеет большое количество яхт в собственном списке продаж, а также тесно сотрудничает со всеми крупными яхтенными производителями по всему миру.

Для того чтобы купить яхту **THEA — AZIMUT** а также проконсультироваться по любому вопросу связанному с покупкой, продажей, чартером яхт позвоните по телефону **+7(918)465-66-44**.

# ОГЛАВЛЕНИЕ

ОГЛАВЛЕНИЕ	2
ХАРАКТЕРИСТИКИ	4
Обзор	4
Основная информация	4
Размеры	5
Скорость, вместимость и масса	5
Размещение	5
Корпус и палуба	5
Информация о двигателе	5
ПОДРОБНОЕ ОПИСАНИЕ	6
Salon/ Dining	6
Galley	6
Lower Helm	6
VIP Stateroom	7
Guest Stateroom - Port	7
Guest Stateroom - Starboard	8
Master Stateroom	8
Cockpit/ Swim Platform	8
Flybridge	9
Bow Seating	9
Engine Room/ Mechanical	9
Исключения	10
Отказ от ответственности	10
ФОТОГРАФИИ	11
КОНТАКТЫ	20
Контактная информация	20
Телефоны	20
Время работы	20

---

Адрес

20

# ХАРАКТЕРИСТИКИ

## Обзор

2018 Azimut 80 Flybridge

U.S. Duty Paid

130 Hours on MAN V12 1550s.

Like New Condition, CE - A Rated Vessel

A unique opportunity to own a very lightly used 2018 80 flybridge is here! The owner took delivery of the boat in August of 2017 and his plans have since changed. The boat just arrived from Italy and is conveniently located in Miami Beach. She will be featured in the Miami Yacht Show on Collins Ave.

- 4 Sateroom, 5 Head Layout + 3 Crew
- Aventics Joystick Control with Hydraulic Bow and Stern Thrusters
- CMC Zero Speed Stabilization Fins
- Upgraded 2 x Onan 27kW Generators
- Raymarine Gold Electronics Package with AIS, Radar and Autopilot
- Parker Water Maker - 130 litres/hour
- Hydraulic Swim Platform
- Underwater Lights
- Spacious Bow Seating Area with Sunpad
- Absolutely Stunning - Drone Video Coming Soon

DYSID:3168129

## Основная информация

**Тип судна:** Моторная яхта

**Подкатегория:** Sport Cruiser

**Модельный год:** 2018

**Год постройки:** 2018

**Страна:** United States

**Открытая палуба мостика:** Да

**Кубрик:** Да

## Размеры

---

**Длина общая:** 80' 0" (24.38m)

**Ширина:** 20' 3" (6.17m)

**Макс. осадка:** 5' 8" (1.73m)

## Скорость, вместимость и масса

---

**Крейс. скорость:** 26 Kts. (30 MPH)

**Макс. скорость:** 31 Kts. (36 MPH)

**Водоизмещение:** 128000 Pounds

**Вместимость воды:** 290 Gallons

**Вместимость сточного бака:** 240 Gallons **Объем топливного бака:** 1576 Gallons

## Размещение

---

**Всего кают:** 4

**Всего ком. состава:** 5

## Корпус и палуба

---

**Материал корпуса:** Fiberglass

## Информация о двигателе

---

**Двигатели:** 2

**Производитель:** MAN

**Модель:** V12

**Тип двигателя:** Inboard

**Тип топлива:** Diesel

---

# ПОДРОБНОЕ ОПИСАНИЕ

---

## Salon/ Dining

---

- The salon instantly captures your attention with the floor to ceiling windows and beautiful decor.
- The dark wood cabinetry is accented nicely with light colored furniture and soft, blue wall coverings.
- To port and starboard are full size sofas and a barrel chair aft.
- The television is on a hi-lo actuator on the port side with access to the Fusion stereo just aft.
- As you make your way forward there is a beautiful dining area that accommodates 8 guests.
- The view from the dining area is breathtaking through the floor to ceiling windows and seating is comfortable in the dark wood and leather chairs. The dining table has a large wooden base and is accented in white leather on the surface.
- There is accent lighting throughout and thick blinds to create a private setting if desired.

## Galley

---

- As you make your way forward from the salon you will notice the desired day head to port and galley entrance to starboard.
- The galley is completely separate from the salon and helm area and features beautiful stainless appliances, white cabinetry and solid countertops.
- The galley is outfitted with a full size Mabe refrigerator/freezer, 4-burner Miele cooktop, Miele convection over/microwave and large stainless sink.
- The custom Azimut dish ware storage area is located next to the refrigerator and can serve up to 10 guests.
- The storage is more than adequate
- To starboard is 1 of 2 water tight doors that allows easy access to the side deck.
- The port side deck access is located just forward of the day head.

## Lower Helm

---

- Just forward of the galley and day head is the lower helm and additional seating/dining area.
- The large windscreen and side windows provide great visibility from the lower helm station.
- To port is an L-shaped seating area that accommodates 4 and wraps around a beautiful stainless and leather table.
- The helm is located to starboard and has 2 leather helm seats equipped with bolsters and

foot rests. They raise, lower and move forward and back electronically.

- Thea is equipped with twin 15 inch Raymarine E series touch screens plotters and have AIS, radar and autopilot integrated.
- Between the 2 plotters is a separate Raymarine LCD screen that has a depth, speed and heading readout.
- The Raymarine autopilot control is just below and comes standard as part of the Gold package.
- Thea is also equipped with the latest Aventics joystick technology that controls the bow and stern thrusters as well as the main drives. The control is located just outboard of the electronic MAN engine controls.
- If you prefer to use the thrusters independently there is a separate control with its own digital screen.
- The Naviop ship computer is also located on the helm and controls all of the electrical systems on board while allowing you to check tankage levels, bilge pumps etc.
- Each 1550 MAN has its own LCD screen and allows the captain to view all engine data.
- The Mitsubishi fin stabilizer system also has its own LCD display on the starboard side.
- There is also a Jabsco spotlight control, single lever trim tab control, and Quick chain counter for the windlass.
- Just aft of the lower helm station is the electrical panel with all AC and DC breakers.

## VIP Stateroom

---

- As you make your way down the companionway from the lower helm you will notice the beautiful light colored wood and leather accents continue down through the 4 staterooms.
- The VIP is situated forward and has an island queen berth and en-suite head.
- There are 2 large rectangular windows and 2 opening port holes that allow tons of natural light into the space.
- The mirrored walls and lighting accents make the space feel large and inviting.
- Each stateroom is outfitted with its own Fusion stereo control and Dometic thermostat.
- There is ample storage throughout with a large hanging locker on the starboard side.
- The en-suite head is also spacious and features a separate stall shower lined with beautiful teak. The mirrored accents continue throughout and the solid countertop has a full-size sink basin built in with chrome faucet.
- All 5 heads feature the latest Tecma technology with built-in bidet.

## Guest Stateroom - Port

---

- The guest stateroom on the port side also features a queen berth and en-suite head.
- The light colored wall coverings, shiny stainless and accent lighting really make this stateroom stand out.
- There is no shortage of storage with multiple drawers and a larger hanging locker on the port side.

- 2 opening port holes and large rectangular window allow lots of sunlight into the space.
- The en-suite head in this guest stateroom also has a beautiful teak shower and plenty of storage space above the vanity.

---

## Guest Stateroom - Starboard

---

- The starboard guest stateroom features 2 twin berths and a third pullman berth above.
- There is great storage space and another en-suite head with separate stall shower.

---

## Master Stateroom

---

- As you make your way aft down a few steps from the forward staterooms you enter the full beam master.
- There are 2 linen closets, a hanging locker and a seating area to starboard as you walk into the stateroom. The storage does not stop there however. The walk-in closet is located on the port side with plenty of drawers on the forward bulkhead.
- The 8 waterline windows offer a breathtaking view out both the port and starboard sides. There are 4 opening port holes that allow the fresh air to breeze through the space.
- To port is a nice settee for two with a table between and a love seat sits below the windows to starboard.
- The island berth has beautiful accent lighting above with marble reading lights below and a light blue headboard accent.
- Thea features his and hers washrooms in the master conjoined by a spacious teak, walkthrough shower with waterfall head.
- Both sides have their own vanities with full-size sink basins. The starboard side has a completely separate bathtub and the Tecma head and bidet are situated to port.

---

## Cockpit/ Swim Platform

---

- Thea's cockpit is covered in beautiful teak and has a beautiful Stemar upholstered U-shaped dinette with large teak table.
- On the starboard side is a small galley unit with Kenyon grill, freshwater sink and Dometic wine chiller. To port you will find wide, teak steps up to the flybridge.
- The teak continues down both sides to the large hydraulic swim platform.
- The Williams 385 Turbo jet tender is easily launched from the platform with plenty of room to move about while she is loaded.
- The crew cabin and engine room are accessed through the transom door.
- The crew features a private captain's cabin, separate head and bunk room for 2 additional crew members.
- Just forward from there is the walk-in engine room.



---

## Flybridge

---

- Undoubtedly the most impressive space on Thea is her flybridge. The 20 foot beam is very evident in this area.
- The teak continues throughout the entire bridge and there is no shortage of seating and entertaining space.
- There are 2 more U-shaped dinettes with teak tables and a sun pad aft.
- To port is another summer galley area that features a second Kenyon grill, freshwater sink, Vitrifrigo ice maker and Vitrifrigo fridge.
- The hard top covers the forward half of the bridge while the aft end is left open for sunbathing and plenty of room for additional lounge chairs.
- The hard top has a retractable center section that opens up the whole space.
- At the upper helm you will find redundant instrumentation and a full suite of Raymarine electronics.

---

## Bow Seating

---

- The bow is another great place for entertaining and hanging out in the sun. The teak continues down the wide side decks all the way forward. You will also notice as you make your way that there are boarding doors to port and starboard.
- There is a large U-shaped seating area and teak table that can be covered with a Sunbrella shade if desired.
- Forward of the seating area is a sun pad large enough to accommodate 6 to 8 adults.
- Just outboard of the seating area are 4 large storage lockers great for lines, fenders and cleaning supplies.

---

## Engine Room/ Mechanical

---

- Thea is equipped with twin MAN V12 1550 HP diesels and has nearly 6'5" of clearance in the engine room. 130 Hours.
- MAN Model: D2682LE426
- ZF 2050 A Gears.
- She is equipped with twin 27kW Onan generators. Model: 27MDKDU- 8208A.
- The Dometic AC chiller system is located on the starboard side. 144,000 BTUs. Model: Condaria PCWM 36004 co 1.14.
- The aluminum fuel tanks are outboard and have a capacity of 788 gallons each.
- The Side-Power thruster control unit is easily accessible on the port side above the fuel tank and powers both the thrusters and CMC stabilizer fins. Both CMC control units are located on the forward bulkhead of the engine room just above the main engines.
- Both main engines and generators are equipped with Racor fuel filters/water separators.
- The main electrical distribution panel is located to starboard right as you enter the engine room.

- The Parker water maker and hydraulic pumps for the swim platform and passerelle are located to port and starboard just as you enter the crew cabin.
- Sea-Fire suppression system is located on the forward bulkhead of the engine room.

## Исключения

---

При продаже яхты исключаются личные вещи владельца.

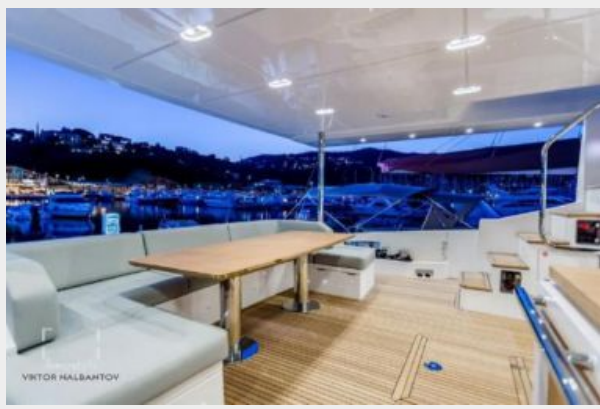
## Отказ от ответственности

---

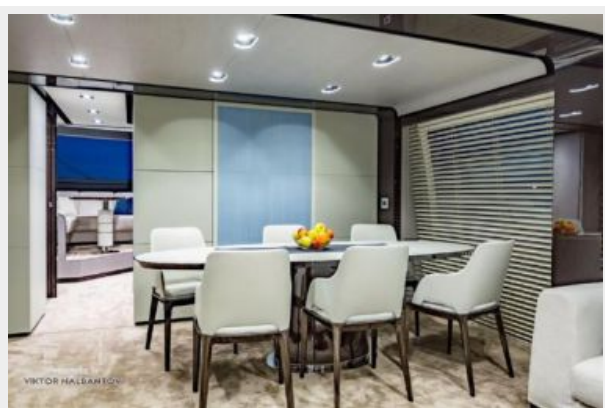
Компания предоставляет описание судна или яхты добросовестно, но не может гарантировать точность этой информации, а также не ручается за техническое состояние. Покупатель должен проинструктировать своих агентов или оценщиков исследовать представленную информацию более подробно, по собственному желанию. Продажа судна или яхты, изменение цены или снятие с продажи будет происходить без предварительного уведомления.

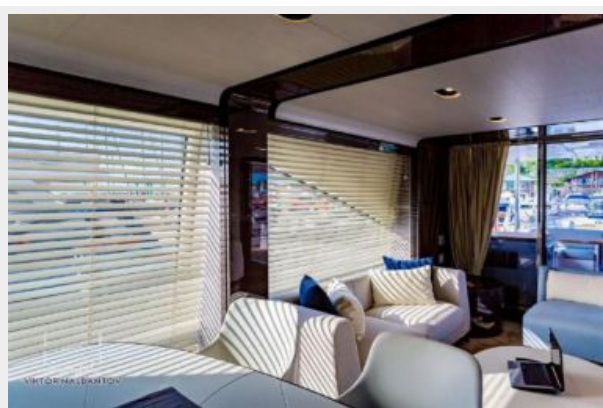
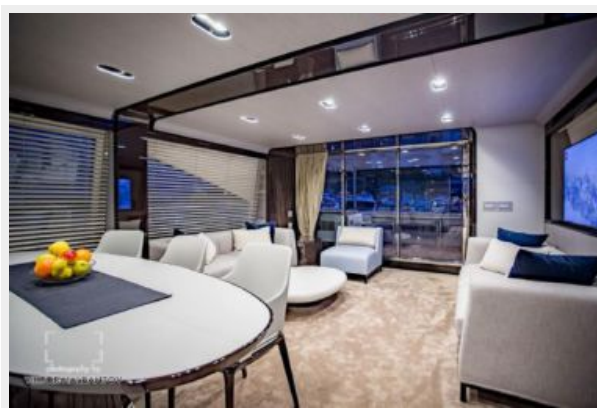
# ФОТОГРАФИИ

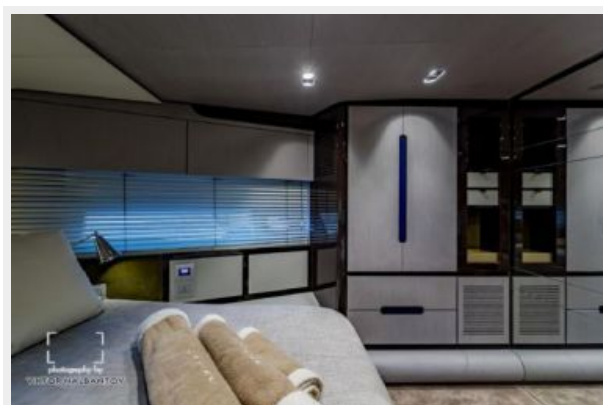
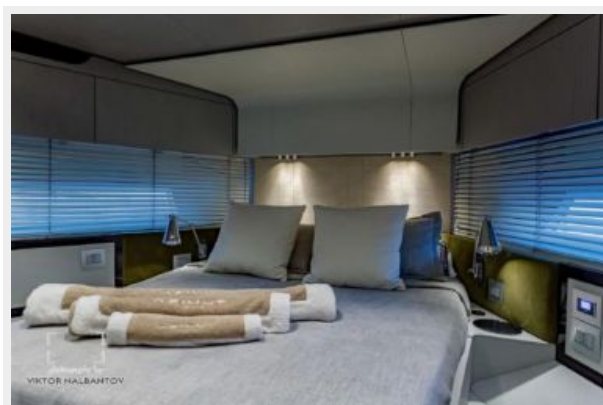
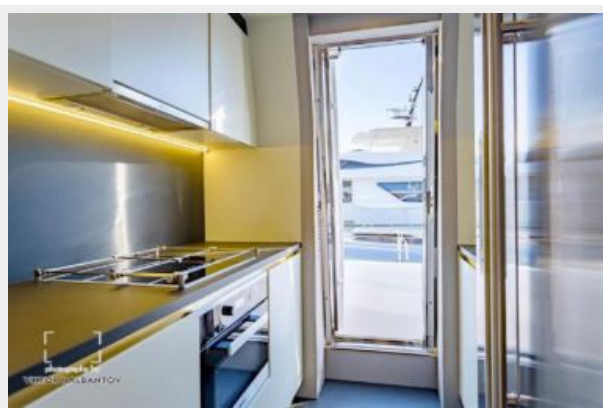




















# КОНТАКТЫ

---

Андрей Шестаков (Andrey Shestakov) – ведущий яхтенный брокер отдела продаж яхт и судов компании Shestakov Yacht Sales Inc. Официальный представитель Shestakov Yacht Sales Inc. для русскоговорящих клиентов в центральном офисе компании в Майами/Форт Лодердейл/Флорида/США.

## Контактная информация

---

Email: [andrey@shestakovyachtsales.com](mailto:andrey@shestakovyachtsales.com)

Web: [shestakovyachtsales.com](http://shestakovyachtsales.com)

## Телефоны

---

Краснодарский край: **+7(918)465-66-44**

США, Майами, Флорида: **+1(954)274-4435**

## Время работы

---

Понедельник – Суббота: **9:00 - 21:00**  
EDT

Воскресенье: **Закрито**

## Адрес

---



Harbour Towne Marina, 850 NE 3rd St,  
STE 213, Dania, FL 33004