

95 PEARL - CATS — PEARL MOTOR YACHTS



Builder: PEARL MOTOR YACHTS

Year Built: 2019

Model: Motor Yacht

Price: \$7,995,000 USD

Location: United States

LOA: 95' 0" (28.96m)

Beam: 22' 0" (6.71m)

Max Draft: 7' 9" (2.36m)

Cruise Speed: 20 Kts. (23 MPH)

Max Speed: 24 Kts. (28 MPH)

Our experienced yacht broker, Andrey Shestakov, will help you choose and buy a yacht that best suits your needs 95 Pearl - CATS — PEARL MOTOR YACHTS from our catalogue. Presently, at Shestakov Yacht Sales Inc., we have a wide variety of yachts available on our sale's list. We also work in close contact with all the big yacht manufacturers from all over the world.

If you would like to buy a yacht 95 Pearl - CATS — PEARL MOTOR YACHTS or would like help answering any questions concerning purchasing, selling or chartering a yacht, please call +1(954)274-4435

TABLE OF CONTENTS

TABLE OF CONTENTS	2
SPECIFICATIONS	3
Overview	3
Basic Information	3
Dimensions	3
Speed, Capacities and Weight	3
Accommodations	4
Hull and Deck Information	4
Engine Information	4
DETAILED INFORMATION	5
Standard Features	5
Upgraded Features	6
Exclusions	6
Disclaimer	7
PHOTOS	8
profile new	23
P95-002 Layout	23
Pearl 95 Dimensions_Page_1	23
CONTACTS	24
Contact details	24
Telephones	24
Office hours	24
Address	24

SPECIFICATIONS

Overview

Temporary Import as manufacturers sample – not for sale in the USA

The new Pearl 95...a new flagship to spearhead the Pearl range. She continues the hugely successful design collaboration between Dixon yacht design and Kelly Hoppen. The Pearl 95 is as innovative and groundbreaking as her smaller sisters but even more spacious, even more luxurious, and even more breathtaking.

Basic Information

Category: Motor Yacht

Model Year: 2020

Year Built: 2019

Country: United States

Fly Bridge: Yes

Dimensions

LOA: 95' 0" (28.96m)

Beam: 22' 0" (6.71m)

Max Draft: 7' 9" (2.36m)

Speed, Capacities and Weight

Cruise Speed: 20 Kts. (23 MPH)

Cruise Speed Range: 328

Max Speed: 24 Kts. (28 MPH)

Displacement: 209439.1489 Pounds

Water Capacity: 422.6752832 Gallons

Holding Tank: 184.9204364 Gallons

Fuel Capacity: 2641.72052 Gallons

Accommodations

Total Cabins: 4

Sleeps: 8

Total Heads: 5

Crew Cabin: 2

Crew Berths: 5

Crew Sleeps: 5

Crew Heads: 2

Hull and Deck Information

Hull Material: Fiberglass

Engine Information

Engines: 2

Manufacturer: Caterpillar

Model: C32

Engine Type: Inboard

Fuel Type: Diesel

DETAILED INFORMATION

Standard Features

- 4 Guest Staterooms accommodate 8 Owner/Guests (including full beam owners cabin on main deck with panoramic view, a large VIP cabin aft, and 2 Guest Cabins to port and starboard with twin berths)
- Additionally, Crew accommodations for 5 crew forward (including crew mess, captain cabin with head, and 2 bunk cabins which share a head)

- Kelly Hoppen interior design
- Opening portholes throughout
- Sprung mattresses throughout
- **Beach club/garage with fold down buttresses**
- Swimming shower on beach club
- Aft deck seating with adjustable table
- Hydraulically operated bathing platform
- Stainless steel swimming ladder
- Foredeck seating and sunbathing area
- Open cell foamed external upholstery
- Opening patio doors to side decks
- Electrically operated stainless steel framed patio door
- **Hydraulic passerelle**
- Teak cockpit, flybridge and side decks
- Flybridge bar with sink, BBQ, Fridge and ice maker
- Aft Cockpit wetbar with sink, ice maker and fridge
- Glass bridge with integrated navigation and vessel control systems
- Aft deck, flybridge and screen cover set
- Kahlenberg dual trumpet horn
- Remote control spotlight
- LED lighting throughout
- Glendenning cable master
- Side Power bow and stern thrusters
- Humphries interceptor trim tabs
- Tideseal packless shaft seals
- Lewmar V8 hydraulic anchor winch
- Lewmar C6 hydraulic capstan mooring winches
- Integrated AC/DC elec control system
- Reverse cycle air-conditioning
- Twin holding tanks with pumpout system
- FM200 automated fire extinguishing system
- Central vacuum system
- Washing machine and tumble dryer by Miele

- Galley by Siematic
- LCD TVs throughout
- Pearl crockery, cutlery and towel suite

Upgraded Features

- Flybridge GRP hard top with electric sunroof and lighting
- Hot Tub on flybridge with built in sunbathing area
- Retractable flybridge aft sun awning
- Rise and fall waterproof 55" TV on flybridge
- Foredeck sun awning with carbon fibre poles
- Garage wet bar
- Deck furniture package
- Underwater lights (pair)
- Custom light weight fenders
- Stainless steel anchors in lieu of standard
- Strengthen aft mooring cleats
- Seakeeper SK 35 Gyro stabilizer
- Generator upgrade to 2 x 35 kw Kohler
- Upgrade air conditioning to Tropical (ambient temperature 40 degrees)
- Upgrade guest head toilets to Headhunter system
- Headhunter sewage treatment system
- Sea Recovery XL2200 water maker
- Aventics joystick
- **ASEA frequency converter and 220v socket circuit**
- Upgrade AV system to Crestron
- FLIR M364C camera
- Axis Q35 CCTV system
- 3/4G onboard Wi-Fi
- Powered bed sliders to port and starboard guest cabin
- Electrically operated blinds throughout
- RPH blinds pack
- Fit electric drapes to salon windows and patio door
- Fit Hastens mattresses to Master and VIP cabin
- Upgrade salon TV to Samsung 65" LED TV
- Fit internal dehumidifiers to salon and guest cabins
- Captain and crew cabin TV/DVD pack
- Fit heated towel rails to guest cabin heads
- Kelly Hoppen collection interior design accessories
- Artwork

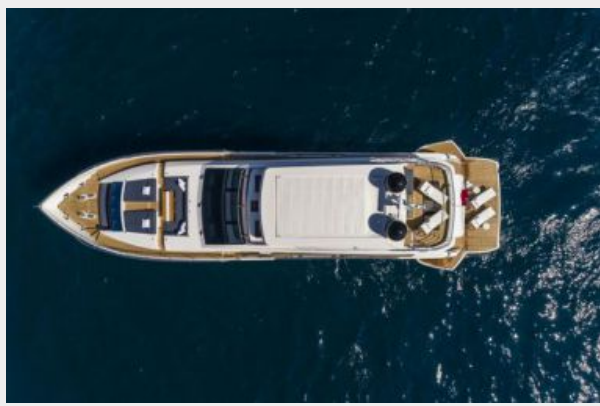
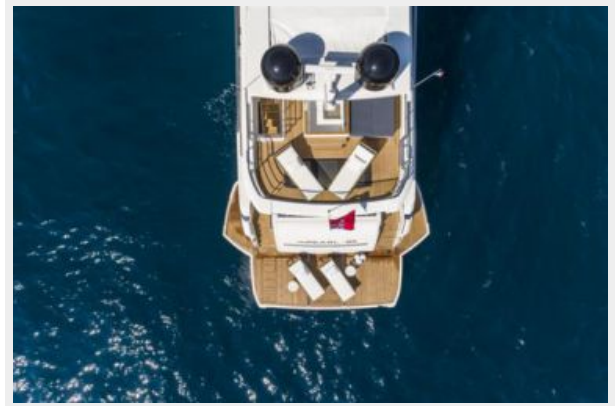
Exclusions

Owner's personal belongings.

Disclaimer

The Company offers the details of this vessel or yacht in good faith but cannot guarantee or warrant the accuracy of this information nor warrant the condition of the vessel. A buyer should instruct his representatives, agents, or his surveyors, to investigate such details as the buyer desires validated. This vessel or yacht is offered subject to prior sale, price change, or withdrawal without notice.

PHOTOS

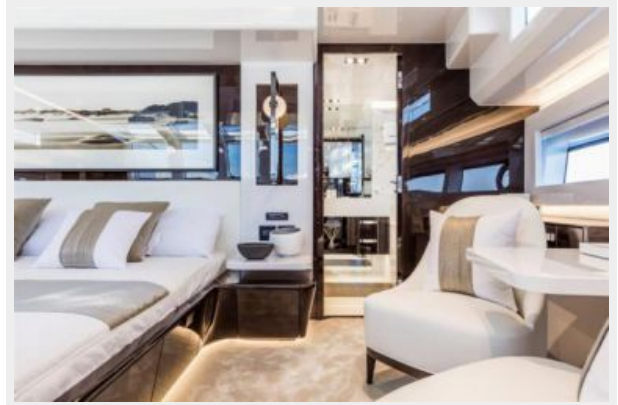


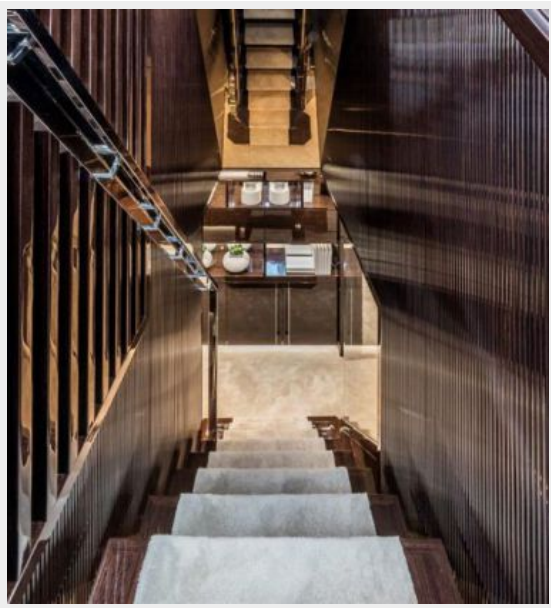






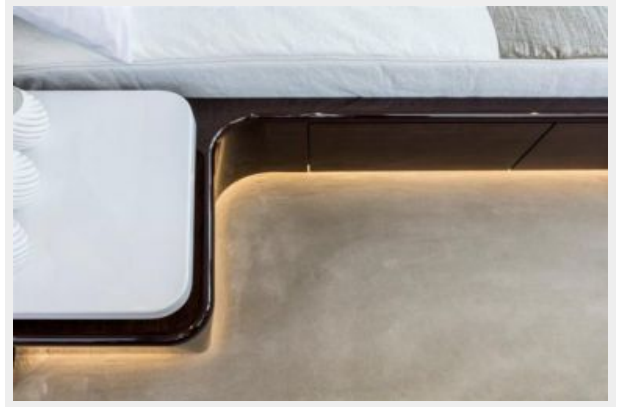


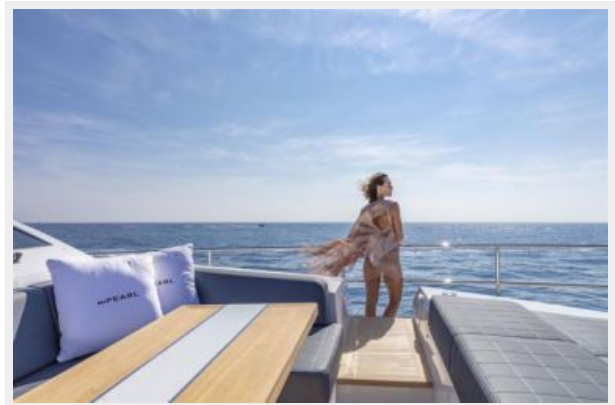
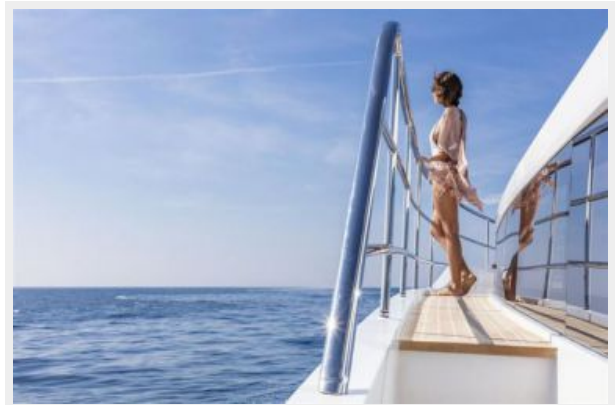


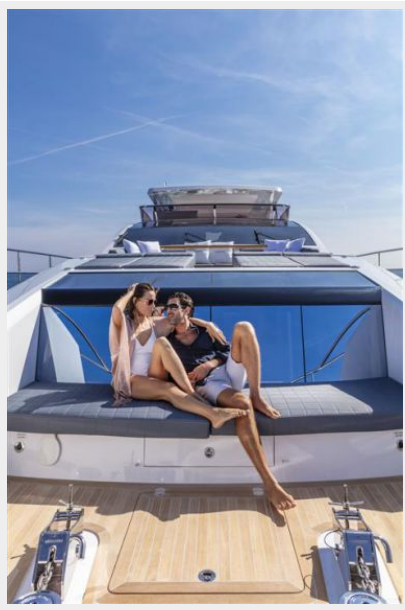






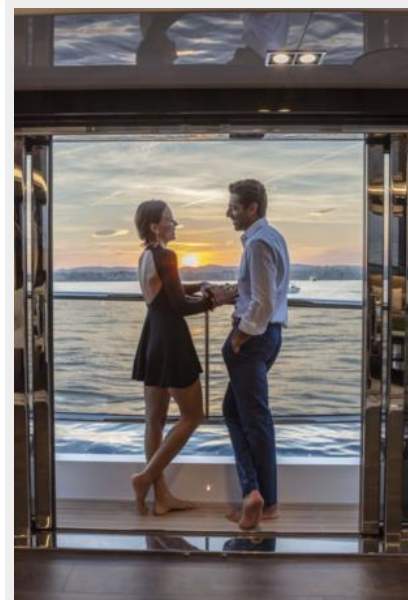
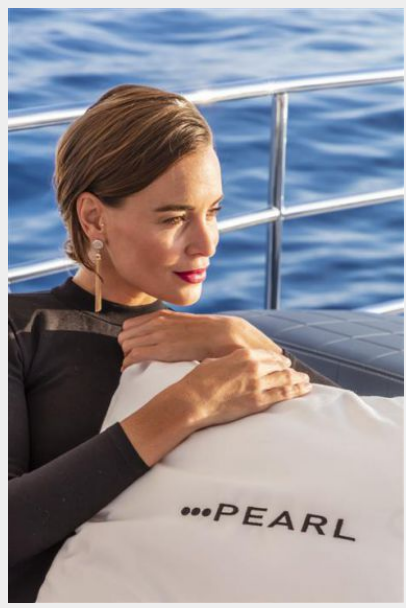














profile new



P95-002 Layout



Pearl 95 Dimensions_Page_1



CONTACTS

Andrey Shestakov, leading yacht broker of the sales department of Shestakov Yacht Sales Inc. Shestakov Yacht Sales Inc., the official representative of the Miami/Fort Lauderdale FL headquarters.

Contact details

Email: andrey@shestakovyachtsales.com

Web: shestakovyachtsales.com/en/

Telephones

USA: +1(954)274-4435

Office hours

Monday – Saturday: **9:00 - 21:00** EDT

Sunday: **closed**

Address



Harbour Towne Marina, 850 NE 3rd St,
STE 213, Dania, FL 33004