

ALTA MAREA — JONGERT



Builder: JONGERT

Year Built: 1991

Model: Cruising Sailboat

Price: PRICE ON APPLICATION

Location: Spain

LOA: 96' 7" (29.44m)

Beam: 21' 11" (6.68m)

Min Draft: 11' 11" (3.63m)

Cruise Speed: 9 Kts. (10 MPH)

Max Speed: 11 Kts. (13 MPH)

Our experienced yacht broker, Andrey Shestakov, will help you choose and buy a yacht that best suits your needs **ALTA MAREA — JONGERT** from our catalogue. Presently, at Shestakov Yacht Sales Inc., we have a wide variety of yachts available on our sale's list. We also work in close contact with all the big yacht manufacturers from all over the world.

If you would like to buy a yacht **ALTA MAREA — JONGERT** or would like help answering any questions concerning purchasing, selling or chartering a yacht, please call **+1(954)274-4435**

TABLE OF CONTENTS

TABLE OF CONTENTS	2
SPECIFICATIONS	3
Overview	3
Basic Information	3
Dimensions	3
Speed, Capacities and Weight	3
Accommodations	4
Hull and Deck Information	4
Engine Information	4
DETAILED INFORMATION	5
Full Specification	5
Exclusions	7
Disclaimer	7
PHOTOS	8
CONTACTS	13
Contact details	13
Telephones	13
Office hours	13
Address	13

SPECIFICATIONS

Overview

The Jongert 2900M semi-custom series presents a range of 29-meter sailing yachts designed by Tony Castro to combine grace and elegance with exceptional performance. With her steel hull and aluminium superstructure, the sloop design is a precise, fast cruiser.

Alta Marea is the embodiment of Dutch quality, synonymous with premium handcrafted design, construction and finish. This maintained, powerful yacht, is easy to handle due to the fully hydraulically operated sail and furling system, the hydraulic bowthruster and a transom hatch that also transforms into a bathing platform.

Alta Marea's accommodation offers 3 suites for up to 8 guests, comprising of 1 owners cabin and 2 twin cabins with Pullman. She is also capable of carrying up to 3 crew onboard to ensure a relaxed luxury yacht experience.

Basic Information

Category: Cruising Sailboat

Model Year: 1991

Year Built: 1991

Refit Year: 2017

Country: Spain

Dimensions

LOA: 96' 7" (29.44m)

LWL: 77' 5" (23.60m)

Beam: 21' 11" (6.68m)

Min Draft: 11' 11" (3.63m)

Speed, Capacities and Weight

Cruise Speed: 9 Kts. (10 MPH)

Cruise Speed Range: 2500

Max Speed: 11 Kts. (13 MPH)

Water Capacity: 3000 Gallons

Holding Tank: 2500 Gallons

Fuel Capacity: 5000 Gallons

Accommodations

Total Cabins: 3

Total Berths: 6

Sleeps: 6

Hull and Deck Information

Hull Material: Steel

Engine Information

Manufacturer: MERCEDES

Model: V10 183AA31

Engine Type: Inboard

Fuel Type: Diesel

DETAILED INFORMATION

Full Specification

The Jongert 2900M semi-custom series presents a range of 29-meter sailing yachts designed by Tony Castro to combine grace and elegance with exceptional performance. With her steel hull and aluminium superstructure, the sloop design is a precise, fast cruiser.

Alta Marea is the embodiment of Dutch quality, synonymous with premium handcrafted design, construction and finish. This maintained, powerful yacht, is easy to handle due to the fully hydraulically operated sail and furling system, the hydraulic bowthruster and a transom hatch that also transforms into a bathing platform.

Alta Marea's accommodation offers 3 suites for up to 8 guests, comprising of 1 owners cabin and 2 twin cabins with Pullman. She is also capable of carrying up to 3 crew onboard to ensure a relaxed luxury yacht experience.

Hull and Deck Construction

Hull: Steel Superstructure: Aluminum

Keel (type and material) HENRY SCHEEL, USA. STEEL Decks: (material and last overhaul,if?) TEAK. RECAULKING NEW 2018 Naval Architect: Jongert Design Team/Doug Peterson External Designer Peter Sijm Internal Designer Peter Sijm Displacement: 139 tonnes Gross tonnage: 144 GT FULLY LOADED

Deck Equipment Anchors & chain 2 CQR 240 LBS. EACH 1 CHAIN 150m – 16 mm Other Chain 100m 14 mm both new 2016 Calibrated and galvanized Windlass: LEWMAR 6000 HYDRAULIC. Serviced yearly. Last service 2018 . Passarelle: Hydraulic Combined convertible in steps. PLC Control upgraded 2017 Bathing ladder: Aluminum Epoxi coated in Red brad new 2018 Shower on deck : Yes. There's another one by the swimming platform. New 2017 Deck-wash system: Yes. Fresh and Sea Water. Other: Sundeck cushions New 2017 **Engine and Other Machinery (make and year if renewed)**

Engines: Mercedes V10 183AA31, 320 hp 2,230 rpm MTU Engine hours: 897 Hrs. (Januray 2018) Generators: MERCEDES MTU 70 KWTS EACH Generator hours: PORT GEN 1873 Hrs. STB GEN 1871 Hrs. (January 2018)Both full serviced 2017 – 2018 Steering: Autopilot SEGATRON Propeller: 5 BLADES FIXED

Maximum speed: 10.5 Kts Cruising speed : 8.5 – 9 Kts Consumption : Main Engine 25 Lts / Hr. Gen Sets 10 Lts / Hr. total 35 Lts. Hr Range: 2500 nm Aprox using Generators sparingly Tankage Fuel: 5000 l Fresh water: 3000 l Fresh water Pumps New 2016 Serviced

Nov. 2017 Grey water: 2500 Lts. Grey water Pump New 2016 Serviced Nov.2017 Black water: 2500 Lts. Black water Pump New 2016 Serviced Nov. 2017 Bow thruster: Hydromar 45 hp retractable Hydromat Water maker: IDROMAR INTERNATIONAL MODEL MC3J

65 ltrs./ hr. 1500 ltrs. / per day. Equipment New 2016 Air-conditioning: CLIMA Marine Air Conditioning Compressor System New 2016 Ventilator: New Fancoils in all guests cabins 2016 Toilet system: Vacuum suction button Boilers: GIANNESCHI 100 ltrs. 1500 wats. 220 / 230 V New 2018 Water filtration system: Yes Located in the Lazarette.

Refrigeration System: Fridge Compressors, Circulating Pump + Raw Water Pump all new 2017

Sails and Rigging

RIGGING Rig: Rod Rigging Masts: 1 Aluminum Spreaders: 4 Boom/s: 1 Spinnaker boom: 1 Reefing system: Rondal in-mast furling SAILS Sails by: DOYLE / HOOD year: Main and Genoa + 10 Years. Storm Sail New 2016 Foresails: Genoa m2 DOYLE 245 m2 - STORM SAIL 76 m2 Yankee m2: No MPS m2: Spinnaker in Socket Mainsails: 170 m2 Winches: LEWMAR HYDRAULIC SELF TAILING.

All hydraulics on board connected to PTO Gen – Sets 2017

Electrical Systems

Voltage: 24 V / 380 V Frequency: 50 Hz Converter: Yes. 2 for the fridges and 2 for the sockets New 2016 Alternator: Shaft Alt. Main Engine Alt. Gen Sets Alternators serviced Yearly Shore power: 380 V Isolation Transformer Trifasico. 3 polos + Neutro Batteries: x 24 GEL 2 Volts. SUNSHINE 1300 Amp / hr All new 2016 Battery Charger: VICTROM 4 New 2016 Power Management system: VICTROM 4 New 2016 Frequency drive: 50 Hz. Lighting: 24 Volts LED

Navigation & Communication

B&G Wind Speed & Direction, Barograph

RADAR FURUNO

SATELITE TRACKPHONE KVH

VHF ICOM M323G New 2017

ACCOMMODATION

There are 3 guest cabins and 2 crew cabins. Owner consists of a double bed with en-suite

bathroom and the two twin cabins come with Pullman beds.

Crew are in 2 cabins with berths for sleeping up to 3 crew.

TENDER AND TOYS TENDER HIGHFIELD VELMEX SEMIRIGIDA OM 540 PVC

Length 5.40m Beam 2.38m 12 pers.

New 2016 Outboard HONDA 100 HP New 2016 .

1 Stand up Paddle

1 Banana 3 pers.

1 donut

Snorkeling gear and fins x 6 sets New 2017

Skies and rope

SAFETY & SECURITY

2 LIFERAFTS ARIMAR 8 PERSON EACH New 2016

LIFE JACKETS X 10 New 2017

Exclusions

Owner's personal belongings.

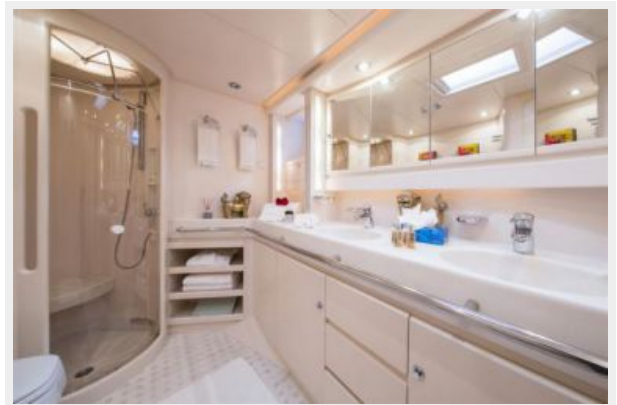
Disclaimer

The Company offers the details of this vessel or yacht in good faith but cannot guarantee or warrant the accuracy of this information nor warrant the condition of the vessel. A buyer should instruct his representatives, agents, or his surveyors, to investigate such details as the buyer desires validated. This vessel or yacht is offered subject to prior sale, price change, or withdrawal without notice.

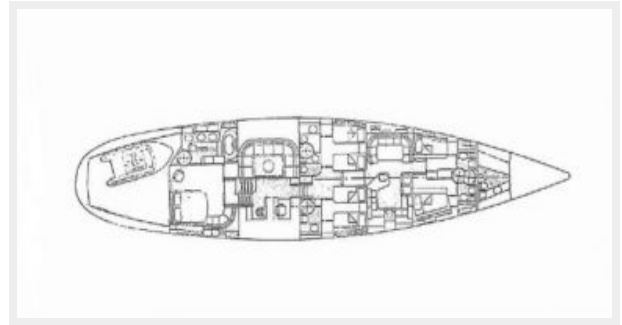
PHOTOS











CONTACTS

Andrey Shestakov, leading yacht broker of the sales department of Shestakov Yacht Sales Inc. Shestakov Yacht Sales Inc., the official representative of the Miami/Fort Lauderdale FL headquarters.

Contact details

Email: andrey@shestakovyachtsales.com

Web: shestakovyachtsales.com/en/

Telephones

USA: +1(954)274-4435

Office hours

Monday – Saturday: **9:00 - 21:00** EDT

Sunday: **closed**

Address



Harbour Towne Marina, 850 NE 3rd St,
STE 213, Dania, FL 33004