

BLUE DIAMOND — JMV



Builder: [JMV](#)

Year Built: 2004

Model: Cruising/Racing Sailboat

Price: PRICE ON APPLICATION

Location: Spain

LOA: 100' (30.48mm)

Beam: 22.93

Min Draft: 11' 6" (3.5mm)

Max Draft: 17' 1" (5.2mm)

Cruise Speed: 10 Knots Kts. (12 MPH)

Max Speed: 12 Knots Kts. (14 MPH)

Our experienced yacht broker, Andrey Shestakov, will help you choose and buy a yacht that best suits your needs **BLUE DIAMOND — JMV** from our catalogue. Presently, at Shestakov Yacht Sales Inc., we have a wide variety of yachts available on our sale's list. We also work in close contact with all the big yacht manufacturers from all over the world.

If you would like to buy a yacht **BLUE DIAMOND — JMV** or would like help answering any questions concerning purchasing, selling or chartering a yacht, please call **+1(954)274-4435**

TABLE OF CONTENTS

TABLE OF CONTENTS	2
SPECIFICATIONS	3
Overview	3
Basic Information	3
Dimensions	3
Speed, Capacities and Weight	4
Accommodations	4
Hull and Deck Information	4
Engine Information	4
PHOTOS	5
CONTACTS	9
Contact details	9
Telephones	9
Office hours	9
Address	9

SPECIFICATIONS

Overview

Designed by Gilles Vaton and built by H2X, the Sailing Yacht BLUE DIAMOND is a great cruiser-racer combining five star comfort and high performances, both for blue water cruising or on the Super Yacht racing circuit! Her luxury interior can accommodate up to eight guests in 4 double cabins with ensuite bathrooms, around a wide saloon and dinner table, well isolated from the galley and the crew quarters, and offers a safe and protected cockpit, separated from the maneuvering area, which features an open transom inviting to the ocean. The flush deck, sleek lines and powerful rig invite for sensational sailing in all conditions! Launched in 2004, BLUE DIAMOND is built of Carbon Fiber, rigged with a Lorima 4 spreaders mast and a wide range of sails. She features a lifting keel to allow shallow access, and has been maintained by a professional crew and a dedicated Owner at the highest level!

Basic Information

Category: Cruising/Racing Sailboat

Sub Category: Sloop

Model Year: 2004

Year Built: 2004

Refit Type: Technic, mechanic and cosmetic **Country:** Spain

Dimensions

LOA: 100' (30.48mm)

LWL: 89' 11" (27.4mm)

Beam: 22.93

Min Draft: 11' 6" (3.5mm)

Max Draft: 17' 1" (5.2mm)

Speed, Capacities and Weight

Cruise Speed: 10 Knots Kts. (12 MPH)

Cruise Speed Range: 1000

Max Speed: 12 Knots Kts. (14 MPH)

Gross Tonnage: 75 Pounds

Water Capacity: 1100 Gallons

Holding Tank: 417.39 Gal Gallons

Fuel Capacity: 792.52 Gal Gallons

Fuel Consumption: 10.57 Gal Gallons

Accommodations

Total Cabins: 4

Total Berths: 4

Sleeps: 8

Total Heads: 4

Crew Cabin: 4

Crew Berths: 3

Crew Heads: 1

Hull and Deck Information

Hull Material: Carbon Composite

Deck Material: Carbon Composite

Hull Configuration: Centerboard

Hull Color: Blue

Hull Designer: Gilles Vaton

Exterior Designer: Gilles Vaton

Interior Designer: Gilles Vaton

Engine Information

Engines: 1

Manufacturer: Cummins

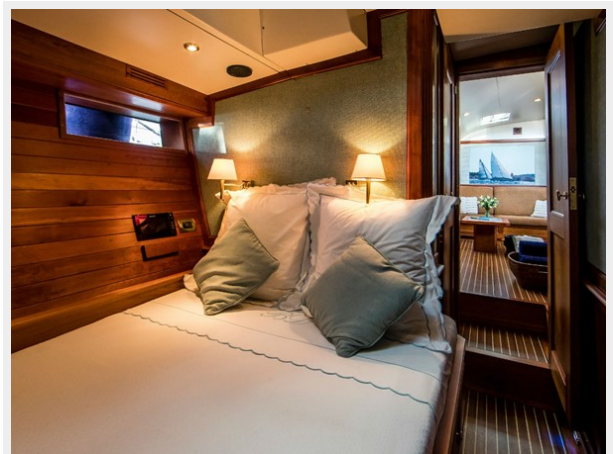
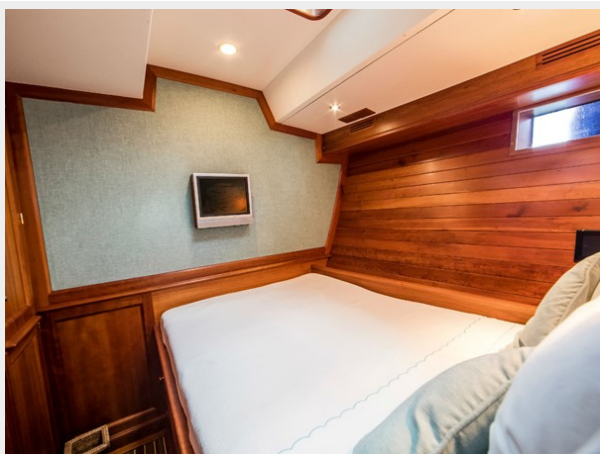
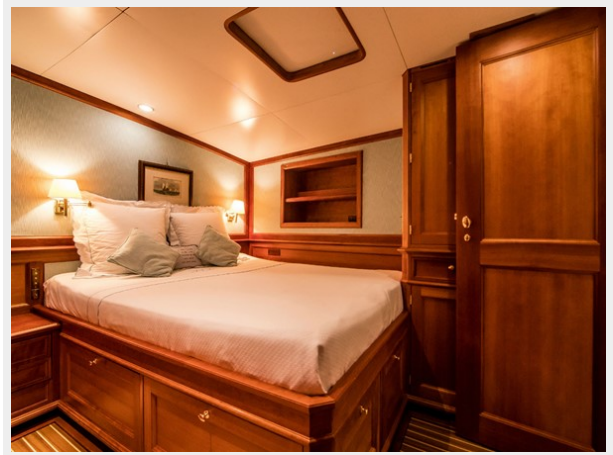
Engine Type: Inboard

Fuel Type: Diesel

PHOTOS









CONTACTS

Andrey Shestakov, leading yacht broker of the sales department of Shestakov Yacht Sales Inc. Shestakov Yacht Sales Inc., the official representative of the Miami/Fort Lauderdale FL headquarters.

Contact details

Email: andrey@shestakovyachtsales.com

Web: shestakovyachtsales.com/en/

Telephones

USA: +1(954)274-4435

Office hours

Monday – Saturday: **9:00 - 21:00** EDT

Sunday: **closed**

Address



Harbour Towne Marina, 850 NE 3rd St,
STE 213, Dania, FL 33004