

## SPIRIT V — BALTIC



**Судостроитель:** BALTIC

**Год постройки:** 2007

**Модель:** Крейсерская яхта

**Цена:** ЦЕНА ЯХТЫ ПО ЗАПРОСУ

**Местонахождение:** Spain

**Длина общая:** 56' 3" (17.14m)

**Мин. осадка:** 7' 7" (2.30m)

**Макс. осадка:** 11' 10" (3.60m)

Купить **SPIRIT V — BALTIC** а также выбрать подходящую вам яхту из нашего каталога яхт вам поможет опытный яхтенный брокер Андрей Шестаков. На сегодняшний день компания **Shestakov Yacht Sales Inc.** имеет большое количество яхт в собственном списке продаж, а также тесно сотрудничает со всеми крупными яхтенными производителями по всему миру.

Для того чтобы купить яхту **SPIRIT V — BALTIC** а также проконсультироваться по любому вопросу связанному с покупкой, продажей, чартером яхт позвоните по телефону **+7(918)465-66-44**.

# ОГЛАВЛЕНИЕ

ОГЛАВЛЕНИЕ	2
ХАРАКТЕРИСТИКИ	3
Обзор	3
Основная информация	3
Размеры	3
Скорость, вместимость и масса	3
Размещение	3
Корпус и палуба	4
Информация о двигателе	4
ПОДРОБНОЕ ОПИСАНИЕ	5
GENERAL	5
Исключения	7
Отказ от ответственности	7
ФОТОГРАФИИ	8
КОНТАКТЫ	12
Контактная информация	12
Телефоны	12
Время работы	12
Адрес	12

# ХАРАКТЕРИСТИКИ

## Обзор

Baltic Yachts are renowned as high quality builders of semi and full custom yachts.

SPIRIT is a perfect embodiment of their ethos – fast, simple, comfortable and above all built to go anywhere and to last.

SPIRIT took her current owner on a journey of a lifetime – now a new owner can fulfill their dreams with the yacht.

## Основная информация

**Тип судна:** Крейсерская яхта

**Модельный год:** 2007

**Год постройки:** 2007

**Страна:** Spain

## Размеры

**Длина общая:** 56' 3" (17.14m)

**Длина по ватерлинии:** 49' 3" (15.00m)

**Мин. осадка:** 7' 7" (2.30m)

**Макс. осадка:** 11' 10" (3.60m)

## Скорость, вместимость и масса

**Водоизмещение:** 33730.726086 Pounds **Вместимость воды:** 105.6688208 Gallons

**Объем топливного бака:** 211.3376416  
Gallons

## Размещение

**Всего кают:** 3

**Спальные места:** 6

**Всего ком. состава:** 2

## Корпус и палуба

---

**Материал корпуса:** Composite

**Дизайнер интерьера:** Jüdel & Vrolijk

## Информация о двигателе

---

**Двигатели:** 1

**Производитель:** Yanmar

**Модель:** 4JH-THE

**Тип двигателя:** Inboard

**Тип топлива:** Diesel

# ПОДРОБНОЕ ОПИСАНИЕ

## GENERAL

Hull and Deck construction Hull and deck laminates in advanced composite construction, with multi axial carbon fibre reinforcements and Herex foam core. Epoxy resin vacuum bagged and post cured. Off white hull with light grey waterline stripes painted with Awl-Grip. Composite bulwarks, 60mm high in bow tapered down to 30mm high aft. Teak laid decks, vacuum bagged in epoxy resin (no fasteners), serviced 2017. Lifting keel with stainless steel fin and lead bulb, hydraulically operated. Manual emergency override. Full keel service by Baltic Yachts 2017. Cantilevered semi-elliptical balanced spade rudder, carbon fibre with foam core. Chain plates, all composite for lightness and strength; incorporated into the bulkheads and hull lay-up. Transom door/swim platform, hydraulically operated with remote wireless control. Winch for launching and hauling dinghy Swim ladder (can also be used as side boarding ladder). Deck fittings & Equipment: Lewmar 3000 Anchor windlass with pivot arm Anchor arm operated manually with gas piston assist. Windlass controls on deck forward and in cockpit. 25kg Lewmar Anchor with 100m S/S chain. Stainless Steel pulpit and pushpit. Lifeline gates port and starboard. Tempered glass cabin windows and hull windows in owner's cabin. Carbon fibre flush deck hatches. Recessed anchor locker. Deck/Sail locker for fenders next to anchor locker. Stem-head fitting with anchor roller and eye for Code 0 furler. Genoa car control lines under deck 2:1. Harken blocks and tracks. Custom stern anchor system, plus custom made carbon stern anchor arm with spare anchor Harken winches Primaries 2 x B65.3 STEA with base sheave Electrical Secondaries 2 x B65.3 STEA Electrical Mast winches 2 x B55.2 STR Engine and Mechanical YANMAR 4JH-HTE Diesel, 110 hp, 110hp at 3200 rpm (serviced 2017), approx. 2.200 h 06/17 4 in-line vertical cylinders, 4-stroke engine, direct injection. ZF-30M reduction gearbox . Aquadrive BPM-Tipo V-drive / thrust bearing with 1.04/1 reduction Volvo 4 blade folding propeller (2017) Line-cutter for propeller Electronic engine control Kvant lever with ZF control box. MAIN SYSTEMS and MECHANICAL Generator: Northern Light 5kW low rpm 230V/50Hz diesel generator 2015 with new motor 2017 (It is very quiet). Dry exhaust for generator Thrusters (both electric): MAX-Power VIP-150 retractable bow thruster MAX-power VIP-150 retractable stern thruster Heating: EBERSPÄCHER Airtronic D5 forced hot air diesel cabin heater with outlets throughout interior. Air conditioning CLD-Webasto air conditioning (AC and heat), serviced with new pumps and check-up 2017. Main unit CLD WBCP24 Tw - 24,000 BTU Aft cabin WBCL000744- 4,500BTU Forward cabin WBCL000746 – 9,000BTU Salon WBCL000747 – 12,000BTU Engine room AC (unknown capacity) Electrical and Plumbing Systems PLUMBING Water-maker Spectra Newport 400 water maker, unit in engine room, filters in aft bathroom – easily accessible. Water heater: 60 litres heated from shore power and engine. Candy washing machine (2015). 2 x Vetus Hato electric heads with gravity drain holding tanks. 2 x manual bilge pumps. 7 x electric bilge pumps with automatic switches, cleaning hose connection to main electric bilge pump in salon. Anchor wash-down at bow. Fresh water wash down at lazarette (with Gardena hose connection). ELECTRICAL SYSTEM 12V 55Ah start battery for main engine Gel (2017). 24V 600Ah service batteries Gel (Feb 2018). 12V 55Ah start battery for generator Gel (2016). 50Amp 12V alternator for start battery. 175Amp 24V alternator

for service batteries. Masterlink BTM-3 battery controller for 24V system. . Shore connection 230 V/AC 50Hz. 2 Mastervolt galvanic isolators, one 50Hz and one 50/60Hz. DC/AC Inverter, 230V 50Hz 5kW. Battery charger, 230V 24V 100Amp. LED navigation lights. LED light strips in interior. PLC monitoring for fire alarm, other fault alarms and fuel-water; electric system: AC/DC; controls; bilge pumps: nav lights; keel indicator; anchor light timer PLC monitoring for batteries Navigation and Communication Systems Instruments: B&G H5000 Sailing Instruments (all 2015, updated 2017) H5000 Hydra CPU H5000 Graphic Display, 4 in cockpit, 1 at nav. table and 1 in owner's cabin H5000 Wind B&G GPS antenna/receiver Depth, speed and sea temp transducers Autopilots: H5000 Autopilot Computer (primary autopilot) H5000 Autopilot controller RAYMARINE ST7002 plus E12099-P Autopilot, acting as backup autopilot. Radios & Communication: RAYMARINE 240 VHF radio with handset in nav. station and cockpit ICOM IC-7200 HF SSB radio with ICOM AH-4 antenna tuner. Navigation: RAYMARINE Radar/Plotter/GPS with: RAYMARINE Radar antenna 2kW E52065 Radar support M92722 RAYMARINE E120 Display at chart table RAYMARINE E80 Display in cockpit GPS antenna Raystar 125 E32042 GPS antenna holder Safety: MOB button AIS transducer (2015) YB Iridium Tracker Computer: Apple Mac Mini with Windows 7 (2015) Dell 23" Screen for computer (2015) Red Box 3G Mail-a-sail router Accommodations Master cabin forward with queen size berth, hanging locker and overhead lockers to starboard, hanging locker to port; en-suite head and shower forward. Watertight door between head and forward sail storage. Next aft to port is a guest cabin with upper and lower berths and hanging locker. Next aft to port is the salon with u-shaped settee outboard, straight settee on centreline and dining table, lockers outboard above settee. Opposite the salon is the galley (forward), with the navigation station directly aft (with wet locker behind). Aft of the saloon to starboard is a guest cabin with a double berth and hanging lockers. Aft of the salon seating area port side is a head with shower (from which there is access to the engine room area). Mosquito screens and blinds for all hatches. Galley GN Espace Oceanchef 3-burner. High quality gas stove with oven (2015) Siemens Microwave oven Nespresso Coffee machine (2015) Galley exhaust fan above stove Custom made Danfoss 24v stainless steel refrigerator and freezer system with compressors in the engine room Entertainment: Stereo in salon w 2 Bose speakers, subwoofer, 2 cockpit speakers (2015/2016) Samsung 32" TV (2016) Samsung Blu-ray player (2015) Sails and Rigging OFFSHORE SPARS carbon fibre mast and V-boom (serviced 2017) Hydraulic Mast-Jack NAVTEC hydraulic outhaul, backstay, boom vang and inner forestay Hydraulic main sheet traveller Recessed roller furler for Genoa LazyJacks. Trysail track on mast. Full batten main system with switch track. SAILS Mainsail One Sails Spectra April 2016 and service May 2017 Jib N° 2 North Sails Heavy Spectra Oct 2016, serviced May 2017 Mainsail Beilken D4 Jib Beilken D4 Inner jib (Staysail) Beilken Hydranet Code 0 Beilken CZ60 with cable and furler Gennaker Beilken purple/grey (2007) Storm Jib Elvstrom Dacron inner forestay, soft hanks Trysail Dacron fits on separate track Symmetric Spinnaker Elvstrom (2009) Symmetric Spinnaker North SK75 red/white with snuffer Asymmetric Spinnaker North Norton 150 G-2, light blue/yellow (2010) Accessories Tender AB Tender 9 UL ultra-light aluminium RIB with Yamaha 9.9 Hp engine (2015) Deck items: Composite (white) cockpit table with custom storage Carbon foldable gangway (4) removable Dorade vents Canvas Sprayhood, SUNBRELLA silver, recessed with soft cover Bimini top, SUNBRELLA silver Sun awnings attached to boom Canvas cover for transom opening Canvas covers for steering

pedestals Canvas covers for winches Cockpit cushions Other: Elk-hide on steering wheels  
Carbon flag pole Outboard storage in forward sail storage Fenders, warps, winch handles.

## Исключения

---

При продаже яхты исключаются личные вещи владельца.

## Отказ от ответственности

---

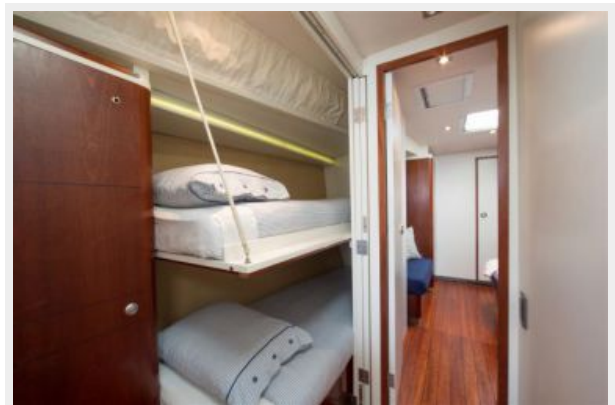
Компания предоставляет описание судна или яхты добросовестно, но не может гарантировать точность этой информации, а также не ручается за техническое состояние. Покупатель должен проинструктировать своих агентов или оценщиков исследовать представленную информацию более подробно, по собственному желанию. Продажа судна или яхты, изменение цены или снятие с продажи будет происходить без предварительного уведомления.

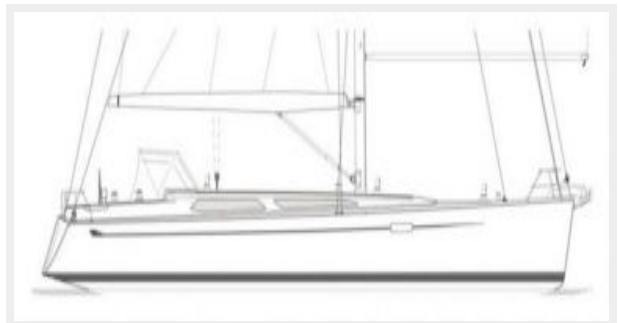
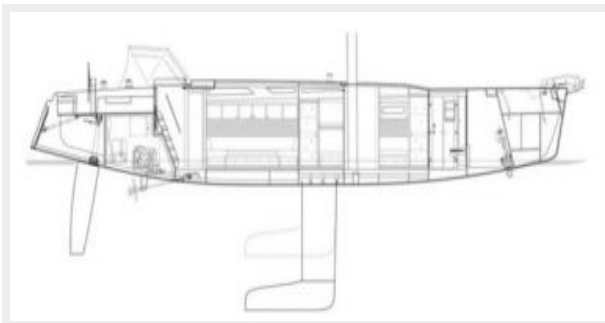
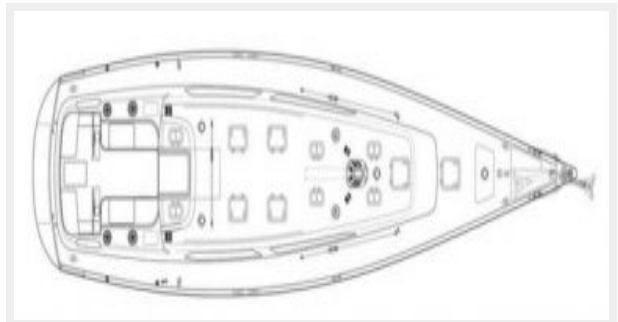
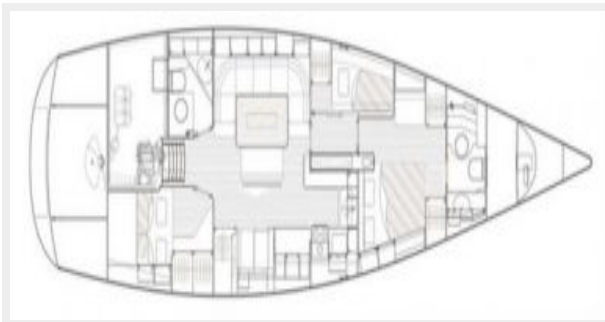
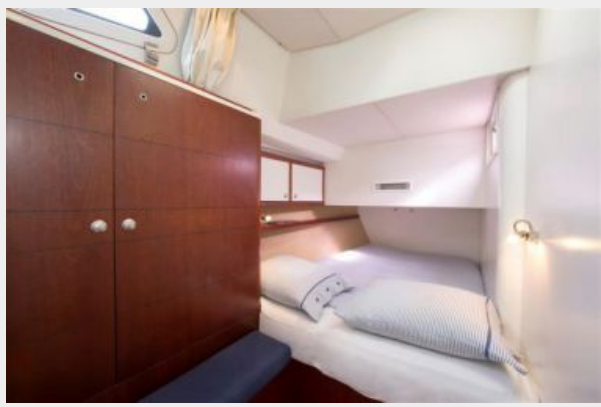
# ФОТОГРАФИИ











# КОНТАКТЫ

---

Андрей Шестаков (Andrey Shestakov) – ведущий яхтенный брокер отдела продаж яхт и судов компании Shestakov Yacht Sales Inc. Официальный представитель Shestakov Yacht Sales Inc. для русскоговорящих клиентов в центральном офисе компании в Майами/Форт Лодердейл/Флорида/США.

## Контактная информация

---

Email: [andrey@shestakovyachtsales.com](mailto:andrey@shestakovyachtsales.com)

Web: [shestakovyachtsales.com](http://shestakovyachtsales.com)

## Телефоны

---

Краснодарский край: **+7(918)465-66-44**

США, Майами, Флорида: **+1(954)274-4435**

## Время работы

---

Понедельник – Суббота: **9:00 - 21:00**  
EDT

Воскресенье: **Закрито**

## Адрес

---



Harbour Towne Marina, 850 NE 3rd St,  
STE 213, Dania, FL 33004