

## XANADU IV — PEARSON



**Builder:** PEARSON

**Year Built:** 1981

**Model:** Cruising Ketch

**Price:** PRICE ON APPLICATION

**Location:** United States

**LOA:** 42' 4" (12.90m)

**Beam:** 13' 0" (3.96m)

**Max Draft:** 5' 3" (1.60m)

Our experienced yacht broker, Andrey Shestakov, will help you choose and buy a yacht that best suits your needs **XANADU IV — PEARSON** from our catalogue. Presently, at Shestakov Yacht Sales Inc., we have a wide variety of yachts available on our sale's list. We also work in close contact with all the big yacht manufacturers from all over the world.

If you would like to buy a yacht **XANADU IV — PEARSON** or would like help answering any questions concerning purchasing, selling or chartering a yacht, please call **+1(954)274-4435**

---

# TABLE OF CONTENTS

---

TABLE OF CONTENTS	2
SPECIFICATIONS	3
Overview	3
Basic Information	8
Dimensions	8
Speed, Capacities and Weight	8
Accommodations	9
Hull and Deck Information	9
PHOTOS	10
CONTACTS	17
Contact details	17
Telephones	17
Office hours	17
Address	17

# SPECIFICATIONS

## Overview

**Xanadu IV (Hull #134) is one of the finest examples of this well-loved Bill Shaw classic on the market. She's been modernized with a bow thruster and repowered, and has been maintained lovingly by her current owners.**

There are many of these boats out there in many various conditions. This one is special. Her decks are solid, she's had a new mast step (mast was shortened and all standing rigging was replaced) added, she has a bow thruster, no leaks or water damage (new hatches and stainless ports), repower. If you love this boat, with its unique layout and dual hatches, this is one you **MUST** see!

Upon purchase in July 2006, owners had the bottom professionally stripped down to gelcoat and 6 coats of Interlux 2000 put on and 2 coats of micron anti fouling paint. Bottom paint has been regularly maintained since then.

### Engine:

- **Perkins M 60 Engine repowered in 1996 by previous owner.**
- **V- Drive rebuilt in Feb 2016**
- **Racor Fuel Filter**
- **Stuffing box rebuilt in Feb 2016**
- **18 inch Max Prop with Shaft Shark Line Cutter**
- **Bow thruster**

### Sails

- |   |                            |
|---|----------------------------|
| • <b>Doyle 130% Genoa with UV strip</b>   | <b>Good Condition</b>      |
| • <b>Doyle 90% Genoa with UV strip</b>  | <b>Good Condition</b>      |
| • <b>Doyle Storm Sail</b>   | <b>New (never used)</b>    |
| • <b>Doyle Main Sail with 2 Reefs and Dutchman flaking</b>  | <b>Good Condition</b>      |
| • <b>Hood MPS with sock (Genaker)</b>   | <b>Very Good Condition</b> |
| • <b>Doyle Mizzen Sail with Stack Pack</b>  | <b>Good Condition</b>      |
| • <b>Main sail cover</b>  | <b>Fair Condition</b>      |
| • <b>Pro Furl Furling</b>   |                            |
| • <b>Removable Inner Forestay for storm sail</b>  |                            |
| • <b>Whisker Pole</b>   |                            |
| • <b>Chain plates replaced on the main Mast Nov. 2015. Chain plates for mizzen available.</b>                 |                            |
| • <b>Main mast shortened by six inches and mast step replaced by previous owner and new rigging installed</b> |                            |
| • <b>Mast Pulpits were custom made with specs from owners group</b>   |                            |

### Galley

- **Adler Barber 12 volt refrigeration system**
- **Propane stove with 3 burners and oven**

## **Canvas**

- **Sunbrella Awning covers deck from mizzen mast to forestay**
- **Dodger (glass replaced 2018) with stainless steel grab rails**
- **Bimini and connector piece**
- **Cockpit privacy lee clothes**
- **Lee Clothes on berths in Salon and Aft Cabin**

## **Ports and Hatches**

- **V-Berth and Salon Hatches replaced with Lewmar Ocean Series Hatches**
- **Hatches in galley and aft cabin**
- **Ports (6) original Bomar Ports replaced with New Found Metal Stainless Tinted ports with screens**
- **Remaining 4 ports replaced plastic lenses with tinted tempered glass**
- **Exterior sun shades for all ports**
- **All ports ( 10 ) open**

## **Electrical:**

- **One 140 watt solar panel installed on dinghy davits**
- **Two 50 watt solar panels installed on starboard cockpit life lines.**
- **Solar controller MPPT 45 Charge Controller with remote**
- **5 overhead lights replaced with Alpenglow Dual White and red night lights**
- **4 Salon Reading lights replaced with LED brass bell type lights**
- **2 upgraded lights in head**
- **2 Caframo Fans variable speed and time controlled fans installed**
- **4 Hella Fans installed**
- **2 Solar Mushroom venting fans**
- **True Charge 2- 60 amp Installed 2015.**

## **Batteries:**

- **6-6v battery bank**
- **1-12v engine start battery**
- **1-12v bow thruster battery (battery needs updating)**
- **Clairon M475 Stereo with MP3 Jack.**
- **2 speakers in salon, 2 in aft cabin, and 2 in cockpit.**

## **Tank Capacity**

- **Water tanks (3) with a capacity of 170 Gallons**
- **Fuel Tank with a capacity of 70 gallons diesel**
- **Holding Tank with 30 gallon capacity with deck pump out or macerator.**

## Navigation Equipment

- **Standard Horizon CP 300i Chart Plotter**
- **Furuno Radar**
- **2 VHF radios with ram mic**
- **SSB Radio**
- **Echo Pilot (forward Scanning Depth sounder)**
- **Standard Horizon Depth Sounder**
- **AIS Receiver not installed**

## Anchoring:

- **Windlass**
- **Main anchor has 200 feet 5/16 chain and 330 ft. rode with a 44-pound Bruce**
- **Secondary anchor has 100 feet 5/16 chain and 200 feet with 44-pound CQR**
- **Stern anchor is a 20-pound anchor with rode**
- **Anchor wash down in anchor locker**
- **Anchor platform with dual rollers**

## Other Improvements

- **New Hot water heater installed in 2012.**
- **Aft Cabin mattress is custom made. Padded spring mattress with pillow top and center hinge for easy access to storage area.**
- **Seagull IV water filter added to water system**
- **4 aluminum propane bottles ( 6 lb )**
- **1 new steel 11 lb for BBQ with bracket**
- **Waterproof shower Hatch Door, installed in shower area outboard to make extra storage area for bathroom tissue, paper towels, laundry supplies and other items.**
- **Teak Medicine cabinet added to V berth.**
- **Small cockpit table between mizzen mast and binnacle made from StarBoard.**
- **Out Board Motor mount is located on stern rail.**
- **4 Fire Extinguishers**
- **Navigation table has built in sliders on lower shelf and a built-in navigation seat with storage area below.**

Boat Name Xanadu IV Specs Builder: Pearson Designer: Bill Shaw Keel: Full Dimensions LOA: 42 ft 4 in Beam: 13 ft 0 in LWL: 33 ft 8 in Maximum Draft: 5 ft 3 in Displacement: 21000 lbs Ballast: 7634 lbs Bridge Clearance: 48 ft 10 in Engines Engine 1: Engine Brand: Perkins Year Built: 1996 Engine Model: M60 Engine Type: Inboard Engine/Fuel Type: Diesel Engine Hours: 2600 Propeller: Folding propeller Drive Type: V Drive Engine Power: 60 HP Tanks Fresh Water Tanks: (170 Gallons) Fuel Tanks: (70 Gallons) Holding Tanks: (30 Gallons) Accommodations Number of single berths: 2 Number of double berths: 1 Number of cabins: 2 Number of heads: 1 Electronics Compass Depthsounder Plotter GPS VHF Navigation center Log-speedometer Sails Furling genoa Battened mainsail Rigging Steering wheel Inside Equipment Marine head

Refrigerator Bow thruster Battery charger Deep freezer Hot water Electric bilge pump Manual bilge pump Electrical Equipment Shore power inlet Outside Equipment/Extras Davits Cockpit cushions Solar panel Cockpit table Electric windlass Covers Lazy bag Cockpit cover Mainsail cover Bimini Top

## **Accommodations**

She has the traditional interior, with the V-berth forward, and starboard and port settees with a solid teak table centerline. The galley is to port, and there is a full head with separate fiberglass shower with tub design.

The mid-ship companionway makes boarding with groceries and supplies easy, as it enters into the galley. The sink in V berth great for company use.

The aft master cabin berth provides great privacy, and there is a nav station to starboard in aft cabin.

## **Engine and Mechanical/Electrical/More!**

### **Engine:**

- **Perkins M 60 Engine repowered in 1996 by previous owner.**
- **V- Drive rebuilt in Feb 2016**
- **Racor Fuel Filter**
- **Stuffing box rebuilt in Feb 2016**
- **18 inch Max Prop with Shaft Shark Line Cutter**
- **Bow thruster**

### **Electrical:**

- **One 140 watt solar panel installed on dinghy davits**
- **Two 50 watt solar panels installed on starboard cockpit life lines.**
- **Solar controller MPPT 45 Charge Controller with remote**
- **5 overhead lights replaced with Alpenglow Dual White and red night lights**
- **4 Salon Reading lights replaced with LED brass bell type lights**
- **2 upgraded lights in head**
- **2 Caframo Fans variable speed and time controlled fans installed**
- **4 Hella Fans installed**
- **2 Solar Mushroom venting fans**
- **True Charge 2- 60 amp Installed 2015.**

### **Batteries:**

- **6-6v battery bank**
- **1-12v engine start battery**
- **1-12v bow thruster battery (battery needs updating)**
- **Clairon M475 Stereo with MP3 Jack.**
- **2 speakers in salon, 2 in aft cabin, and 2 in cockpit.**

## **Navigation Equipment**

- **Standard Horizon CP 300i Chart Plotter**
- **Furuno Radar**
- **2 VHF radios with ram mic**
- **SSB Radio**
- **Echo Pilot (forward Scanning Depth sounder)**
- **Standard Horizon Depth Sounder**
- **AIS Receiver not installed**

## **Anchoring:**

### **Windlass**

- **Main anchor has 200 feet 5/16 chain and 330 ft. rode with a 44-pound Bruce**
- **Secondary anchor has 100 feet 5/16 chain and 200 feet with 44-pound CQR**
- **Stern anchor is a 20-pound anchor with rode**
- **Anchor wash down in anchor locker**
- **Anchor platform with dual rollers**

## **Other Improvements**

- **New Hot water heater installed in 2012.**
- **Aft Cabin mattress is custom made. Padded spring mattress with pillow top and center hinge for easy access to storage area.**
- **Seagull IV water filter added to water system**
- **4 aluminum propane bottles ( 6 lb )**
- **1 new steel 11 lb for BBQ with bracket**
- **Waterproof shower Hatch Door, installed in shower area outboard to make extra storage area for bathroom tissue, paper towels, laundry supplies and other items.**
- **Teak Medicine cabinet added to V berth.**
- **Small cockpit table between mizzen mast and binnacle made from StarBoard.**
- **Out Board Motor mount is located on stern rail.**
- **4 Fire Extinguishers**
- **Navigation table has built in sliders on lower shelf and a built-in navigation seat with**

**storage area below.**

## Broker's Notes

The Pearson is a solid world cruiser, and with her two-cabin layout, she is perfect for either a couple or a family. She has a modified fin keel 5'3" and a short rig of 48' 10," so she can cruise the ICW and the Bahamas with ease.

I can't detect any soft spots or weaknesses in her deck and hull. Owners have taken such good care of her! There are MANY of these boats out there, but this girl is special!!!

## Basic Information

---

**Category:** Cruising Ketch

**Model Year:** 1981

**Year Built:** 1981

**Country:** United States

## Dimensions

---

**LOA:** 42' 4" (12.90m)

**LWL:** 33' 8" (10.26m)

**Beam:** 13' 0" (3.96m)

**Max Draft:** 5' 3" (1.60m)

**Clearance:** 48' 10" (14.88m)

## Speed, Capacities and Weight

---

**Displacement:** 21000 Pounds

**Water Capacity:** 170 Gallons

**Holding Tank:** 30 Gallons

**Fuel Capacity:** 70 Gallons



---

## Accommodations

---

**Total Cabins:** 2

**Total Berths:** 3

**Total Heads:** 1

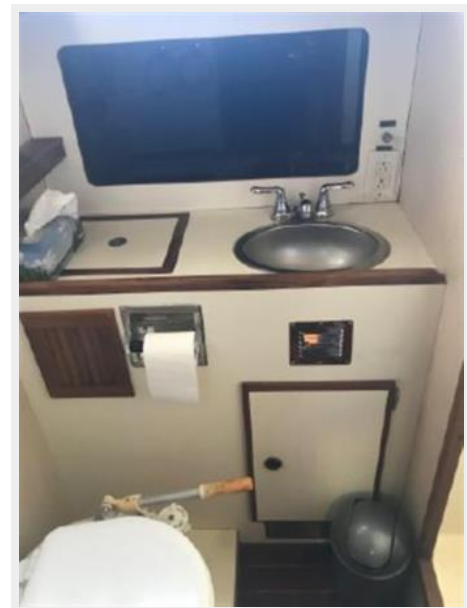
---

## Hull and Deck Information

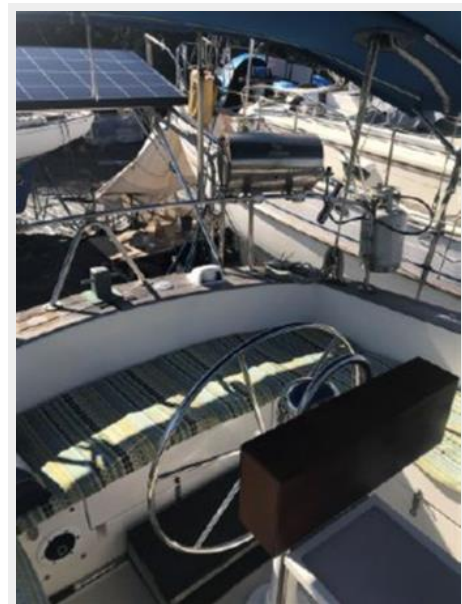
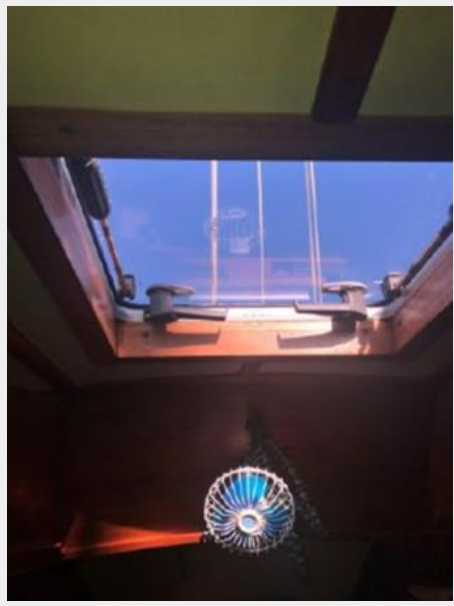
---

**Hull Material:** Fiberglass

# PHOTOS



















# CONTACTS

---

Andrey Shestakov, leading yacht broker of the sales department of Shestakov Yacht Sales Inc. Shestakov Yacht Sales Inc., the official representative of the Miami/Fort Lauderdale FL headquarters.

## Contact details

---

Email: [andrey@shestakovyachtsales.com](mailto:andrey@shestakovyachtsales.com)

Web: [shestakovyachtsales.com/en/](http://shestakovyachtsales.com/en/)

## Telephones

---

USA: +1(954)274-4435

## Office hours

---

Monday – Saturday: **9:00 - 21:00** EDT

Sunday: **closed**

## Address

---



Harbour Towne Marina, 850 NE 3rd St,  
STE 213, Dania, FL 33004