

PHASE ONE — PRINCESS YACHTS



Builder: PRINCESS YACHTS

Year Built: 2012

Model: Motor Yacht

Price: PRICE ON APPLICATION

Location: United States

LOA: 60' 0" (18.29m)

Beam: 16' 1" (4.90m)

Max Draft: 4' 2" (1.27m)

Cruise Speed: 23 Kts. (26 MPH)

Max Speed: 29 Kts. (33 MPH)

Our experienced yacht broker, Andrey Shestakov, will help you choose and buy a yacht that best suits your needs **Phase One — PRINCESS YACHTS** from our catalogue. Presently, at Shestakov Yacht Sales Inc., we have a wide variety of yachts available on our sale's list. We also work in close contact with all the big yacht manufacturers from all over the world.

If you would like to buy a yacht **Phase One — PRINCESS YACHTS** or would like help answering any questions concerning purchasing, selling or chartering a yacht, please call **+1(954)274-4435**

TABLE OF CONTENTS

TABLE OF CONTENTS	2
SPECIFICATIONS	5
Overview	5
Basic Information	5
Dimensions	5
Speed, Capacities and Weight	5
Accommodations	6
Hull and Deck Information	6
DETAILED INFORMATION	7
Interior Features	7
Equipment	7
Salon	7
Galley & Dinette	7
Master Stateroom & Head	8
Forward VIP & Head	8
Starboard Stateroom & Head	8
Crew Quarters	9
Flybridge Helm	9
Electronics & Navigation	9
Cockpit	9
Deck - Ground Tackle	10
Engine Room & Mechanical	10
Exclusions	10
Disclaimer	10
PHOTOS	11
60 Princess Salon	11
60 Princess Engine Room	11
60 Princess Stern	11

60 Princess Master	11
60 Princess Salon	11
60 Princess Salon	11
60 Princess Salon	12
60 Princess Salon	12
60 Princess Galley	12
60 Princess Galley	12
60 Princess Head	13
60 Princess Dinette	13
60 Princess Head	13
60 Princess Master	13
60 Princess Master	14
60 Princess Master	14
60 Princess Head	14
60 Princess Master	14
60 Princess Fwd VIP	15
60 Princess Fwd VIP	15
60 Princess Fwd VIP	15
60 Princess Fwd VIP	15
60 Princess Head	16
60 Princess Guest	16
60 Princess Washer/Dryer	16
60 Princess Helm	16
60 Princess Helm	17
60 Princess Engine Room	17
60 Princess Engine Room	17
60 Princess Engine Room	17
60 Princess Flybridge Dinette	17
60 Princess Grill	17

60 Princess Flybridge Helm	18
60 Princess Flybridge Helm	18
60 Princess Flybridge Controls	18
60 Princess Flybridge Seating	18
60 Princess Flybridge Dinette	18
60 Princess Flybridge Dinette	18
60 Princess Flybridge Looking Fwd	19
60 Princess Flybridge Lounge Seating	19
60 Princess Flybridge Lounge Seating	19
60 Princess Stairwell	19
60 Princess Bow	19
60 Princess Stbd Profile	19
38	20
CONTACTS	21
Contact details	21
Telephones	21
Office hours	21
Address	21

SPECIFICATIONS

Overview

Phase One features a three stateroom, three head layout. There is a large salon with settee to starboard, love seat to port, and an entertainment center which houses a pop-up flat screen TV, Bose system, refrigerator and freezer. The galley is up two steps to starboard with a full size refrigerator and freezer, double sink and a four-burner cooktop. Abundant storage is available for dry goods, flatware, and china service. The U-shaped dinette with table is to port. Moving forward to the staterooms is the full beam master with a queen bed, a forward VIP stateroom with centerline bed and a twin bed in the starboard stateroom. The master and VIP heads both have a full size shower and Vacuflush heads.

Basic Information

Category: Motor Yacht

Model Year: 2012

Year Built: 2012

Country: United States

Dimensions

LOA: 60' 0" (18.29m)

Beam: 16' 1" (4.90m)

Max Draft: 4' 2" (1.27m)

Speed, Capacities and Weight

Cruise Speed: 23 Kts. (26 MPH)

Max Speed: 29 Kts. (33 MPH)

Water Capacity: 210 Gallons

Fuel Capacity: 745 Gallons

Accommodations

Total Cabins: 3

Total Berths: 6

Sleeps: 6

Crew Berths: 1

Crew Sleeps: 2

Hull and Deck Information

Hull Material: Fiberglass

Hull Configuration: Deep Vee

Hull Color: White

DETAILED INFORMATION

Interior Features

- Walnut with gloss finish interior wood
- Guest head avonite Kokoura
- Exterior upholstery in Movida Metallic silver - flybridge & aft deck
- Platinum fabrics
- Upgraded pillow and throw package
- Walnut with gloss finish on interior furniture

Equipment

- 19" LED TV with AM/FM stereo CD/DVD in VIP and starboard staterooms
- US Electrical system, 120V / 60hz throughout, including duplex outlets
- Cruiseair Air conditioning
- Generator upgrade to 17.5kW
- Vacuum toilets
- Dockside TV / Phone outlet
- Heavy duty PVC rub rail with 316 stainless steel insert
- Simrad RS87 US VHF
- Linen package, not including crew
- Place settings of china & glasses
- Washer / Dryer
- Hubbel cords with Glendinning Cablemaster

Salon

- 32" LED TV connected to Bose
- Bose Lifestyle 35 Home theater system
- Central vacuum system
- Vetrifrigo icemaker
- Waeco refrigerator
- Clock and barometer
- Cocoa brown custom leather sofa and loveseat
- Accent pillows

Galley & Dinette

- Kokoera galley avonite

- Upgraded white leather upholstery in dinette
- Convection/microwave oven
- Four-burner cooktop with spray guard
- Insinkerator garbage disposal
- Waeco refrigerator & freezer
- Privacy window

Master Stateroom & Head

- Queen bed
- Large wardrobe
- Night stand
- Dressing table
- Lounge bed
- 32" LED TV
- AM/FM CD with DVD
- Master head avonite Kokoera
- Extractor fan
- Separate stall shower

Forward VIP & Head

- Queen bed with drawers
- Dressing table
- Deck hatch/skylight
- 19" LCD TV with stereo and DVD
- Separate stall shower
- Extractor fan
- Kokora avonite
- Head access door off passageway and forward VIP

Starboard Stateroom & Head

- Twin beds which can convert to a double berth
- Hanging wardrobe
- Night stand
- 19" LCD TVC with stereo and DVD
- Private ensuite head
- Starboard Guest Head
- Separate stall shower
- Extractor fan

- Kokora avonite

Crew Quarters

- Twin beds with storage
- VacuFlush head
- Shower and sink

Flybridge Helm

- Helm electronics
- High gloss teak table
- Electric grille
- Wet bar with refrigerated drink box
- Bridge seating with storage
- Additional Simrad NSE 12" Multifunctional display at flybridge helm
- Variable speed bow & stern thruster

Electronics & Navigation

- Simrad NSE 12 radar/chart plotter with GPS (6kW HD 51" Digital open array scanner) with 12" Brilliant color display
- Aft deck and engine room closed circuit cameras
- Simrad AP24 autopilot (dual station) and Simrad log/depth
- Chase tubes from main helm to radar arch
- Gost security system with camera
- Boning control system
- H24 DirecTV Satellite receivers; (1) in salon and (1) in each room, including crew
- RF Kits for DirecTV receivers
- KVH Satellite TV system
- UPS Backup
- Bose Video enhancer
- Bose AM/FM/CD/DVD

Cockpit

- Exterior upholstery in Movida Metallic Beige
- Voltage stabilizer transformer
- Galvanic isolator
- Glendenning cablemasters

- Transom hydraulic bathing platform
- Cockpit seating covers
- Cockpit speakers with amplifier
- High gloss cockpit table

Deck - Ground Tackle

- Teak cockpit
- Stern winches
- Anchor windlass with 200' chain
- Plow anchor

Engine Room & Mechanical

- Oil changer for engines & generator
- (4) HD Starting batteries
- (4) HD Auxiliary batteries
- Fuel filters
- Voltage stabilizer transformer
- Galvonic isolator

Exclusions

Owner's personal belongings.

Disclaimer

The Company offers the details of this vessel or yacht in good faith but cannot guarantee or warrant the accuracy of this information nor warrant the condition of the vessel. A buyer should instruct his representatives, agents, or his surveyors, to investigate such details as the buyer desires validated. This vessel or yacht is offered subject to prior sale, price change, or withdrawal without notice.

PHOTOS

60 Princess Salon



60 Princess Engine Room



60 Princess Stern



60 Princess Master



60 Princess Salon



60 Princess Salon



60 Princess Salon



60 Princess Salon



60 Princess Galley



60 Princess Galley



60 Princess Dinette



60 Princess Head



60 Princess Head



60 Princess Master



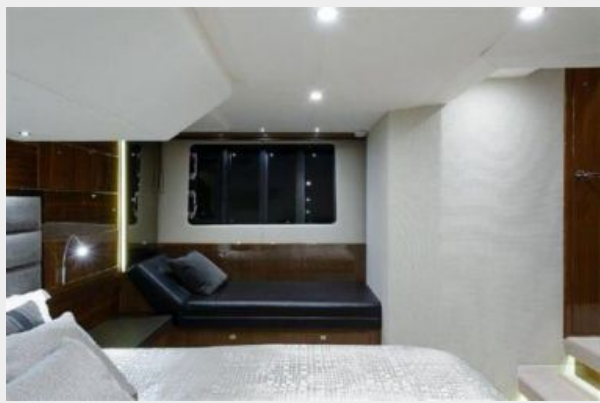
60 Princess Master



60 Princess Master



60 Princess Master



60 Princess Head



60 Princess Fwd VIP



60 Princess Fwd VIP



60 Princess Fwd VIP



60 Princess Fwd VIP



60 Princess Head



60 Princess Guest



60 Princess Washer/Dryer



60 Princess Helm



60 Princess Helm



60 Princess Engine Room



60 Princess Engine Room



60 Princess Engine Room



60 Princess Flybridge Dinette



60 Princess Grill



60 Princess Flybridge Helm



60 Princess Flybridge Helm



60 Princess Flybridge Controls



60 Princess Flybridge Seating



60 Princess Flybridge Dinette



60 Princess Flybridge Dinette



60 Princess Flybridge Looking Fwd



60 Princess Flybridge Lounge Seating



60 Princess Flybridge Lounge Seating



60 Princess Stairwell



60 Princess Bow



60 Princess Stbd Profile



38



CONTACTS

Andrey Shestakov, leading yacht broker of the sales department of Shestakov Yacht Sales Inc. Shestakov Yacht Sales Inc., the official representative of the Miami/Fort Lauderdale FL headquarters.

Contact details

Email: andrey@shestakovyachtsales.com

Web: shestakovyachtsales.com/en/

Telephones

USA: +1(954)274-4435

Office hours

Monday – Saturday: **9:00 - 21:00** EDT

Sunday: **closed**

Address



Harbour Towne Marina, 850 NE 3rd St,
STE 213, Dania, FL 33004