

N/A — HATTERAS



Builder: HATTERAS

LOA: 60' 11" (18.57m)

Year Built: 2014

Beam: 18' 2" (5.54m)

Model: Motor Yacht

Max Draft: 4' 6" (1.37m)

Price: PRICE ON APPLICATION

Location: United States

Our experienced yacht broker, Andrey Shestakov, will help you choose and buy a yacht that best suits your needs n/a — HATTERAS from our catalogue. Presently, at Shestakov Yacht Sales Inc., we have a wide variety of yachts available on our sale's list. We also work in close contact with all the big yacht manufacturers from all over the world.

If you would like to buy a yacht n/a — HATTERAS or would like help answering any questions concerning purchasing, selling or chartering a yacht, please call +1(954)274-4435

TABLE OF CONTENTS

TABLE OF CONTENTS	2
SPECIFICATIONS	4
Overview	4
Basic Information	4
Dimensions	4
Speed, Capacities and Weight	4
Accommodations	5
Hull and Deck Information	5
Engine Information	5
DETAILED INFORMATION	6
Salon	6
Dinette Features	6
Galley	6
Master Stateroom	6
Master Head	7
VIP Stateroom	7
VIP/Guest Head	7
Guest Stateroom	7
Electronics	7
Aft Deck/Sport Deck	8
Flybridge and Bridge Deck	8
Electrical/Mechanical Equipment	8
Outside Equipment/Extras	9
Performance Notes	9
Engine Room	9
Options	9
Disclaimer	10
Exclusions	10

Disclaimer	10
PHOTOS	12
CONTACTS	23
Contact details	23
Telephones	23
Office hours	23
Address	23

SPECIFICATIONS

Overview

OUR TRADE!!! BRING OFFERS!!!!

- Fresh bottom paint 2/14/17
- Prop-Speed on Running Gear.
- Just detailed, buffed and waxed 2/14/17
- Only 480 Hours
- Upgraded CAT C18's
- UPGRADED Garmin Electronics
- Twin ONAN Generators
- NEW SILVERTEX Upholstery all of exterior and flybridge

Basic Information

Category: Motor Yacht

Sub Category: Flybridge

Model Year: 2014

Year Built: 2014

Country: United States

Fly Bridge: Yes

Dimensions

LOA: 60' 11" (18.57m)

Beam: 18' 2" (5.54m)

Max Draft: 4' 6" (1.37m)

Clearance: 23' 0" (7.01m)

Speed, Capacities and Weight

Water Capacity: 250 Gallons

Holding Tank: 100 Gallons

Fuel Capacity: 1000 Gallons

Accommodations

Total Cabins: 3

Total Heads: 2

Hull and Deck Information

Hull Material: Fiberglass

Engine Information

Engines: 2

Manufacturer: Caterpillar

Model: C-18

Engine Type: Inboard

Fuel Type: Diesel

DETAILED INFORMATION

Salon

- UPGRADED- Custom leather sofa L-shaped with storage
- Bose Lifestyle 35 home theater with CD/DVD and surround speakers
- LED lighting throughout
- All windows have blinds
- Padded panel headliner
- 36" LCD flat screen TV
- UPGRADED Amitco Vinyl flooring

Dinette Features

- Custom marble dinette with L-shaped leather seating and storage underneath
- All LED lighting with steps to tower companionway
- Dinette L-shape with storage

Galley

- UPGRADE - Open galley with custom marble, island, and stainless steel sink
- UPGRADE- Stainless wine cooler
- UPGRADE- Dish washer
- Microwave/convection oven
- UPGRADE (4) sub zero refrigerator/freezers
- 4-burner ceramic cook top
- Pantograph door starboard side
- Amtico strip flooring

Master Stateroom

- Custom upholstered headboard
- UPGRADE- Full beam master suite with opening port lights on both sides
- King size berth with upgraded mattress
- Nightstands with drawers
- Vanity and stool
- Twin cedar-lined wardrobes upgraded
- TV and Bose surround sound system
- Dresser with drawers both port and starboard
- Twin cedar-lined wardrobes

- Mirrors

Master Head

- Private ensuite head with Amitco strip floors
- Mirrored ceiling
- Upgraded marble counter tops
- UPGRADE Dual vessel sink and vanity cabinet
- Large separate shower with seat
- UPGRADE out of the wall faucets

VIP Stateroom

- Queen size berth with upholstered headboard
- Cedar-lined storage underneath
- Cedar-lined hanging locker
- Night stands port and starboard
- 19" LCD TV with DVD stereo
- All LED lighting
- Private access to head

VIP/Guest Head

- Access from both the VIP Stateroom and the companionway
- Amtico strip flooring
- LED lighting
- Upgraded marble counter tops
- Stall shower with door
- Base cabinet with storage
- Upgraded wall covering

Guest Stateroom

- Top & Bottom Bunk Bed
- 19" LCD TV with DVD stereo
- Cedar lined closet space
- All LED Lighting

Electronics

- (2) 15' Garmin 3D with plotter
- Furuno sounder
- Garmin Gst, 6 kw HD radar open array
- SAT TV KVH
- Simrad auto pilot
- Icom VHF
- (2) cameras on both port and starboard sides and (1) camera in the engine room
- Eprib Globafix IPro

- Clarion CD player
- JL Cockpit speakers
- Compass
- Furuno Depthsounder
- Log-speedometer
- Navigation center
- Repeater(s)

Aft Deck/Sport Deck

- Transom door
- Port and starboard gates
- UPGRADE - (2) retractable shore cord
- Hatch to bridge
- UPGRADE - (5) blue under water lights
- Molded fiberglass stairway to flybridge

Flybridge and Bridge Deck

- UPGRADE - 1000 lb hydraulic davit
- UPGRADE- BBQ grill
- UPGRADE - Refrigerator
- UPGRADE - Icemaker
- UPGRADE - Custom Release helm chairs
- UPGRADE - Lounge seating with custom Release Marine table
- UPGRADE - Recessed Tri-color LED lighting
- UPGRADE - enclosure
- Tri-color LED lights for hard top

Electrical/Mechanical Equipment

- 20 gallon hot water heater

- 240v automatic battery charger
- Automatic battery paralleling system
- Sidepower Bow thruster
- Oil changing system
- Engine gears
- Generator exhaust/water separator
- UPGRADE - (2) 21.5 kw Onan fresh water-cooled electronic quiet diesel generators
- Fiberglass air intake system for engine room
- FM 200 fixed fire extinguishing system for engine compartment
- 40 gallon and hour water maker
- 8.0 Inverter with battery bank for operation of water pump, all gallery refrigeration, and salon entertainment equipment
- Shore power inlet

Outside Equipment/Extras

- Cockpit shower
- Cockpit cushions NEW Silvertex
- Cockpit table
- Swimming ladder

Performance Notes

- Cruise Low- 20 knots
- Cruise Long Range- 9.2 knots/ 1090 miles
- Cruise High- 26+ knots
- Max Speed- 30+ knots

Engine Room

- Entrance through both the aft deck hatch or the optional bustle door from the transom
- Spacious with 6'11" head room
- Unhindered access to the upgraded twin CAT C-18 engine with 1150hp each

Options

- 2nd 21.5 kw Onan generator
- Polished plow anchor
- (2) Release tables on Cockpit and Bridge - custom blue LED lights all along the edge
- Exterior Forward Entry Door Selection

- Engine Selection (CAT C-18 1135 BHP)
- Wood and Finish Selection (African Mahogany Satin - Horizontal Grain and Dark Molding)
- Bow Thruster
- Additional Generator Selection (Generator, Single 21kw, Standard)
- Aft Deck Bustle Gates
- Aft Deck Boarding Ladder, Tide Ride Sea Stairs with Storage Bracket
- Flybridge Refrigerator/Icemaker Combo Unit
- Bow Deck Freshwater Wash Down, Additional Outlet
- Galley Wine Cooler
- Bow Stateroom TV, 19" LCD with DVD Stereo in lieu of AM/FM/CD Stereo
- Galley Oven
- Galley Dishwasher Selection
- Galley Icemaker
- Oil Changing System Engines/Gear/Generator
- Generator Exhaust/Water Separator
- Companionway Washer/Dryer
- Bow Deck Cushions to Convert Forward Seat to Sunpad
- Aft Deck Retractable Shorecords (2) in Lieu of Fixed Inlets
- Flybridge Grill with Cabinet
- Aft Deck Hatch to Flybridge
- Aft Deck Hand-Held Shower
- Master Stateroom HMC System 3 King Mattress
- Master Head Plexi Mirrored Ceiling
- Watermaker Selection (8.0 Watermaker, 800 GPD, Sea Recover)
- Flybridge Air Conditioning

Disclaimer

The Company offers the details of this vessel in good faith but cannot guarantee or warrant the accuracy of this information nor warrant the condition of the vessel. A buyer should instruct his agents, or his surveyors, to investigate such details as the buyer desires validated. This vessel is offered subject to prior sale, price change, or withdrawal without notice.

Exclusions

Owner's personal belongings.

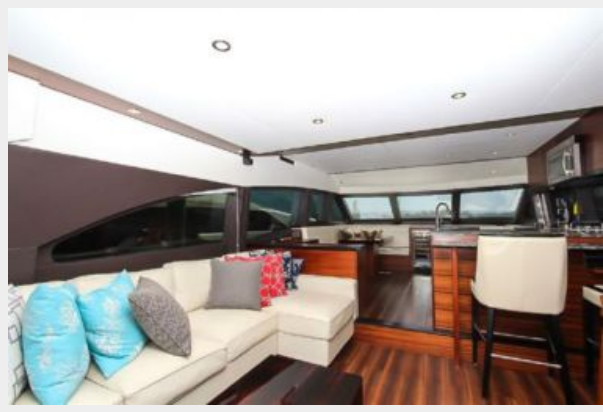
Disclaimer

The Company offers the details of this vessel or yacht in good faith but cannot guarantee or warrant the accuracy of this information nor warrant the condition of the vessel. A buyer should instruct his representatives, agents, or his surveyors, to investigate such details as the buyer

desires validated. This vessel or yacht is offered subject to prior sale, price change, or withdrawal without notice.

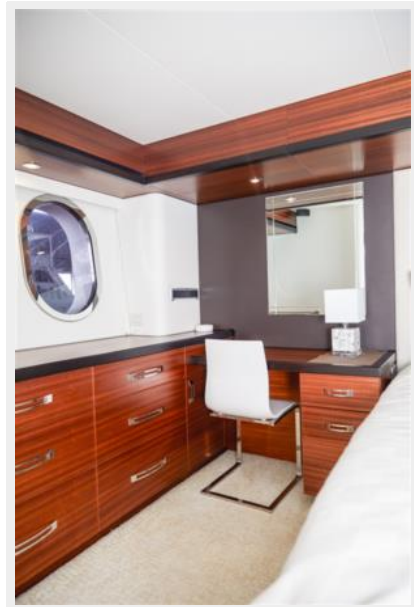
PHOTOS

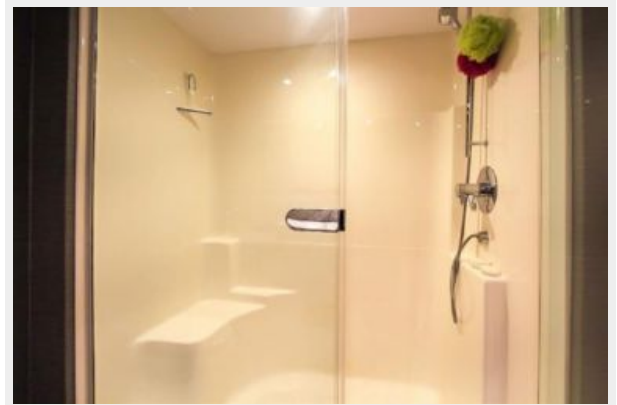
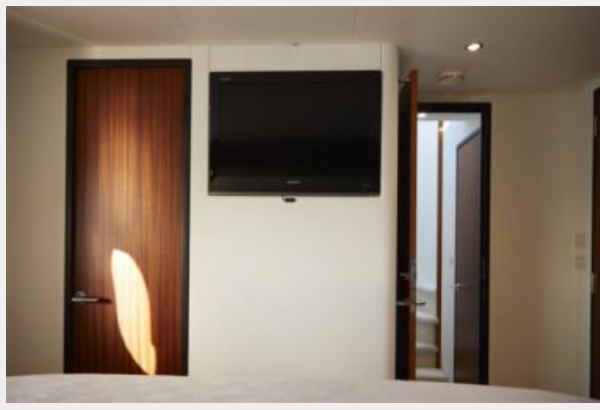


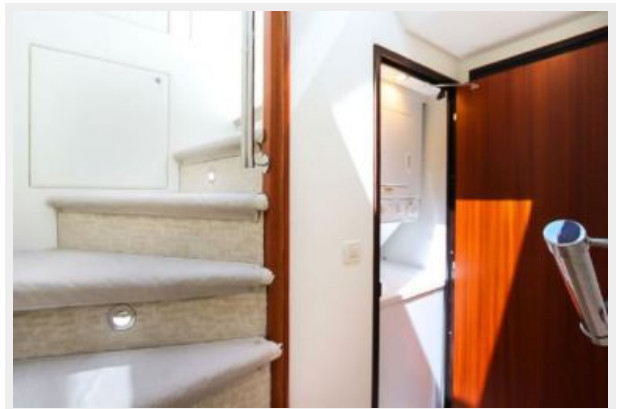
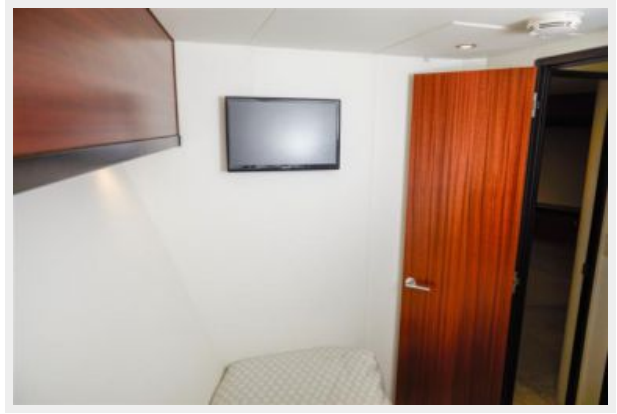




















CONTACTS

Andrey Shestakov, leading yacht broker of the sales department of Shestakov Yacht Sales Inc. Shestakov Yacht Sales Inc., the official representative of the Miami/Fort Lauderdale FL headquarters.

Contact details

Email: andrey@shestakovyachtsales.com

Web: shestakovyachtsales.com/en/

Telephones

USA: +1(954)274-4435

Office hours

Monday – Saturday: **9:00 - 21:00** EDT

Sunday: **closed**

Address



Harbour Towne Marina, 850 NE 3rd St,
STE 213, Dania, FL 33004