

NEPHELE — MCMULLEN & WING



Builder: MCMULLEN & WING

Year Built: 2003

Model: Cruising Sailboat

Price: PRICE ON APPLICATION

Location: Spain

LOA: 112' 2" (34.17m)

Beam: 25' 7" (7.78m)

Max Draft: 14' 8" (4.46m)

Cruise Speed: 10 Kts. (12 MPH)

Max Speed: 12 Kts. (14 MPH)

Our experienced yacht broker, Andrey Shestakov, will help you choose and buy a yacht that best suits your needs **NEPHELE — MCMULLEN & WING** from our catalogue. Presently, at Shestakov Yacht Sales Inc., we have a wide variety of yachts available on our sale's list. We also work in close contact with all the big yacht manufacturers from all over the world.

If you would like to buy a yacht **NEPHELE — MCMULLEN & WING** or would like help answering any questions concerning purchasing, selling or chartering a yacht, please call **+1(954)274-4435**

TABLE OF CONTENTS

TABLE OF CONTENTS	2
SPECIFICATIONS	3
Overview	3
Basic Information	11
Dimensions	11
Speed, Capacities and Weight	11
Accommodations	12
Hull and Deck Information	12
Engine Information	12
DETAILED INFORMATION	13
Detailed Specification	13
Exclusions	21
Disclaimer	21
PHOTOS	22
CONTACTS	25
Contact details	25
Telephones	25
Office hours	25
Address	25

SPECIFICATIONS

Overview

- Commercially registered with charter history
- Easy, efficient sailing with in-boom furling
- World cruising yacht
- Sleeps 7 guests in 3 cabins
- Contemporary and bright interior design
- Large central cockpit

PRICE: 3,450,000 EUR (VAT paid)

Not Offered for Sale or Charter to US Residents whilst in US Waters

GENERAL

Type	Sailing yacht	
Flag	Malta	
Dimensions	Length O.A.	34.17m
	Beam	7.78m
	Draft	4.46m
Tonnage	Gross	134
	Displacement	115
Year Built	2003	

Builder McMullen & Wing

Exterior Designer German Frers

Interior Designer McMullen & Wing and Maritime Interiors of Auckland

Construction Alustar H321 Aluminium

Guests 7

Crew 4-5

MACHINERY

Main Engines Luger – 6 Cylinder Turbo Charged Diesel 425hp

Gear Boxes ZF350A

Shafts & Propellers Hundestad Variable Pitch – VP5

Speed Cruising – 10 knots
Maximum – 12 knots

Engine Hours 12,468

AUXILIARY MACHINERY & ELECTRICAL SYSTEMS

Generators	2X Northern Lights M984K 32kw (new March 2015)
Generator Hours	Port: 3015 STBD: 2704
Electricity	208 3-phase 60 cycle AC / 120 single phase AC
Shore Power	ASEA 36 kva
Batteries	Sonnenschein A600 Solar 12 OPzV 1200 (new Sept. 2012)

TANK CAPACITIES (APPROXIMATE)

Fuel	9,000 litres in 2 tanks
Water	3000 litres in 2 tanks
Watermakers	HEM Series 30 – 12,000L per day
Grey/Black Water	1,750 litres in 1 tank

ANCILLARY EQUIPMENT

Steering System	JP3 & Dyneema cable
Bow Thruster	Lewmar 400S Hydraulic
Fuel Separator & Filters	Racor

Radars	Furuno 2115BB
GPS	2x Leica MX420
Navtex	Furuno N+ 300
Echo Sounder	B&G 2000 Hydra
Wind Instruments	B&G Hercules 2000; 4x 20/20s; 10 FFDs
Log	B&G 2000 Hydra

DECK EQUIPMENT

Anchor Windlass	2x Lewmar 5000 Hydraulic
Ground Tackle	Anchors: STBD 105kg, Port 80kg Chains: STBD 100m, Port 100m
Boat Crane & Davits	Aft deck stowed tender crane. MarQuip Low Boy – 500kg
Swimming Platform	Yes
Passerelle	OpacMare. Hydraulic telescopic on port side of transom
Side Boarding Ladders	Yes
Awning	Cockpit Bimini & Boom Awning
Cockpit Glass	No

Underwater Lights Yes, at transom

SAFETY AND SECURITY EQUIPMENT

	Life Rafts x2 AirMar 12person
Safety	EPIRB x1 SAILOR
	SART
	Man Overboard Modules x2
Alarms	FT NaVision
Fire Fighting	FM200, 14 mixed fire extinguishers throughout
Security	N/A

AUDIO / VISUAL ENTERTAINMENT SYSTEMS

Saloon: 42" NEC Samsung LCD TV, B&W speakers, Yamaha Amplifier, Samsung DVD, Apple TV, 1TB WD Hard Drive

Master Cabin: 36" Plasma TV, Philips multisystem DVD, Blaupunkt CD/FM

Guest Cabins: Blaupunkt CD/FM

Exterior: B&W speakers

Crew Mess: Big Bay 17" LCD, Philips multisystem DVD, Samsung multisystem VHS/world TV receiver

DOMESTIC EQUIPMENT

Main Galley AEG 4 burner induction, Miele Oven, Sharp Microwave, Miele dishwasher, custom 4 door Stainless Steel refrigerator, underfloor Stainless Steel freezer, Sub Zero drawer freezer

Laundry Miele Novatronic washer – model W1926A, Miele Novatronic dryer – model W1526A

Pantry Sub Zero refrigerator, Panasonic microwave oven, Scotsman icemaker, Stainless Steel sink

Main Deck Bar Drinks refrigerator

TENDERS

Italboats Predator 490 with 80hp 4-stroke Suzuki Outboard

WATERSPORTS EQUIPMENT

2x Byte sailing dinghies, wakeboard, waterskis, donuts, snorkelling
Watersports equipment equipment, dive compressor

ACCOMMODATION

Owner	Full beam cabin with King size berth and ensuite
Guests	2x Twin cabins with ensuite (one cabin with Pullman Bunk) Captain's cabin with double berth and single berth above with ensuite
Crew	Port side cabin with 2 berths and shared heads STBD side cabin with single berth and shared heads

SAILS

Norths Spectra/Carbon Mainsail 2008 (315m²)

Norths Spectra/Carbon Jib 2008 (275m²)

Norths Spectra/Carbon Staysail 2008 (85m²)

Norths 2.2/1.5oz Asymmetric 2008 (1,049m²)

Norths Pentex/Spectra Code 0 2008 (533m²)

Norths Dacron Storm Trysail

DISCLAIMER

These particulars have been prepared from information provided by the sellers and are intended as a general guide to the vessel. It is up to the purchaser to confirm details of concern to him by survey, inspection and/or enquiry of the seller and to ensure that the purchase contract properly reflects his concern and specific details upon which he may rely. We always advise an independent survey.

Basic Information

Category: Cruising Sailboat

Model Year: 2003

Year Built: 2003

Country: Spain

Dimensions

LOA: 112' 2" (34.17m)

Beam: 25' 7" (7.78m)

Max Draft: 14' 8" (4.46m)

Speed, Capacities and Weight

Cruise Speed: 10 Kts. (12 MPH)

Max Speed: 12 Kts. (14 MPH)

Displacement: 115 Pounds

Water Capacity: 792.516156 Gallons

Fuel Capacity: 9000.077639588 Gallons

Accommodations

Total Cabins: 3

Total Berths: 7

Sleeps: 7

Crew Sleeps: 5

Hull and Deck Information

Hull Material: Alustar

Engine Information

Engines: 1

Manufacturer: Luggier

DETAILED INFORMATION

Detailed Specification

- Commercially registered with charter history
- Easy, efficient sailing with in-boom furling
- World cruising yacht
- Sleeps 7 guests in 3 cabins
- Contemporary and bright interior design
- Large central cockpit

PRICE: 3,450,000 EUR (VAT paid)

Not Offered for Sale or Charter to US Residents whilst in US Waters

GENERAL

Type	Sailing yacht	
Flag	Malta	
Dimensions	Length O.A.	34.17m
	Beam	7.78m
	Draft	4.46m
Tonnage	Gross	134
	Displacement	115
Year Built	2003	

Builder McMullen & Wing

Exterior Designer German Frers

Interior Designer McMullen & Wing and Maritime Interiors of Auckland

Construction Alustar H321 Aluminium

Guests 7

Crew 4-5

MACHINERY

Main Engines Luger – 6 Cylinder Turbo Charged Diesel 425hp

Gear Boxes ZF350A

Shafts & Propellers Hundestad Variable Pitch – VP5

Speed Cruising – 10 knots
Maximum – 12 knots

Engine Hours 12,468

AUXILIARY MACHINERY & ELECTRICAL SYSTEMS

Generators	2X Northern Lights M984K 32kw (new March 2015)
Generator Hours	Port: 3015 STBD: 2704
Electricity	208 3-phase 60 cycle AC / 120 single phase AC
Shore Power	ASEA 36 kva
Batteries	Sonnenschein A600 Solar 12 OPzV 1200 (new Sept. 2012)

TANK CAPACITIES (APPROXIMATE)

Fuel	9,000 litres in 2 tanks
Water	3000 litres in 2 tanks
Watermakers	HEM Series 30 – 12,000L per day
Grey/Black Water	1,750 litres in 1 tank

ANCILLARY EQUIPMENT

Steering System	JP3 & Dyneema cable
Bow Thruster	Lewmar 400S Hydraulic
Fuel Separator & Filters	Racor

Radars	Furuno 2115BB
GPS	2x Leica MX420
Navtex	Furuno N+ 300
Echo Sounder	B&G 2000 Hydra
Wind Instruments	B&G Hercules 2000; 4x 20/20s; 10 FFDs
Log	B&G 2000 Hydra

DECK EQUIPMENT

Anchor Windlass	2x Lewmar 5000 Hydraulic
Ground Tackle	Anchors: STBD 105kg, Port 80kg Chains: STBD 100m, Port 100m
Boat Crane & Davits	Aft deck stowed tender crane. MarQuip Low Boy – 500kg
Swimming Platform	Yes
Passerelle	OpacMare. Hydraulic telescopic on port side of transom
Side Boarding Ladders	Yes
Awning	Cockpit Bimini & Boom Awning
Cockpit Glass	No

Underwater Lights Yes, at transom

SAFETY AND SECURITY EQUIPMENT

	Life Rafts x2 AirMar 12person
Safety	EPIRB x1 SAILOR
	SART
	Man Overboard Modules x2
Alarms	FT NaVision
Fire Fighting	FM200, 14 mixed fire extinguishers throughout
Security	N/A

AUDIO / VISUAL ENTERTAINMENT SYSTEMS

Saloon: 42" NEC Samsung LCD TV, B&W speakers, Yamaha Amplifier, Samsung DVD, Apple TV, 1TB WD Hard Drive

Master Cabin: 36" Plasma TV, Philips multisystem DVD, Blaupunkt CD/FM

Guest Cabins: Blaupunkt CD/FM

Exterior: B&W speakers

Crew Mess: Big Bay 17" LCD, Philips multisystem DVD, Samsung multisystem VHS/world TV receiver

DOMESTIC EQUIPMENT

Main Galley AEG 4 burner induction, Miele Oven, Sharp Microwave, Miele dishwasher, custom 4 door Stainless Steel refrigerator, underfloor Stainless Steel freezer, Sub Zero drawer freezer

Laundry Miele Novatronic washer – model W1926A, Miele Novatronic dryer – model W1526A

Pantry Sub Zero refrigerator, Panasonic microwave oven, Scotsman icemaker, Stainless Steel sink

Main Deck Bar Drinks refrigerator

TENDERS

Italboats Predator 490 with 80hp 4-stroke Suzuki Outboard

WATERSPORTS EQUIPMENT

2x Byte sailing dinghies, wakeboard, waterskis, donuts, snorkelling
Watersports equipment equipment, dive compressor

ACCOMMODATION

Owner	Full beam cabin with King size berth and ensuite
Guests	2x Twin cabins with ensuite (one cabin with Pullman Bunk) Captain's cabin with double berth and single berth above with ensuite
Crew	Port side cabin with 2 berths and shared heads STBD side cabin with single berth and shared heads

SAILS

Norths Spectra/Carbon Mainsail 2008 (315m²)

Norths Spectra/Carbon Jib 2008 (275m²)

Norths Spectra/Carbon Staysail 2008 (85m²)

Norths 2.2/1.5oz Asymmetric 2008 (1,049m²)

Norths Pentex/Spectra Code 0 2008 (533m²)

Norths Dacron Storm Trysail

DISCLAIMER

These particulars have been prepared from information provided by the sellers and are intended as a general guide to the vessel. It is up to the purchaser to confirm details of concern to him by survey, inspection and/or enquiry of the seller and to ensure that the purchase contract properly reflects his concern and specific details upon which he may rely. We always advise an independent survey.

Exclusions

Owner's personal belongings.

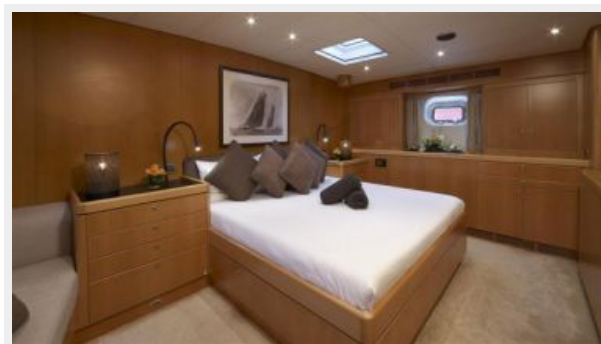
Disclaimer

The Company offers the details of this vessel or yacht in good faith but cannot guarantee or warrant the accuracy of this information nor warrant the condition of the vessel. A buyer should instruct his representatives, agents, or his surveyors, to investigate such details as the buyer desires validated. This vessel or yacht is offered subject to prior sale, price change, or withdrawal without notice.

PHOTOS







CONTACTS

Andrey Shestakov, leading yacht broker of the sales department of Shestakov Yacht Sales Inc. Shestakov Yacht Sales Inc., the official representative of the Miami/Fort Lauderdale FL headquarters.

Contact details

Email: andrey@shestakovyachtsales.com

Web: shestakovyachtsales.com/en/

Telephones

USA: +1(954)274-4435

Office hours

Monday – Saturday: **9:00 - 21:00** EDT

Sunday: **closed**

Address



Harbour Towne Marina, 850 NE 3rd St,
STE 213, Dania, FL 33004