

## NEPHELE — MCMULLEN & WING



**Судостроитель:** MCMULLEN & WING

**Год постройки:** 2003

**Модель:** Крейсерская яхта

**Цена:** ЦЕНА ЯХТЫ ПО ЗАПРОСУ

**Местонахождение:** Spain

**Длина общая:** 112' 2" (34.17m)

**Ширина:** 25' 7" (7.78m)

**Макс. осадка:** 14' 8" (4.46m)

**Крейс. скорость:** 10 Kts. (12 MPH)

**Макс. скорость:** 12 Kts. (14 MPH)

Купить **NEPHELE — MCMULLEN & WING** а также выбрать подходящую вам яхту из нашего каталога яхт вам поможет опытный яхтенный брокер Андрей Шестаков. На сегодняшний день компания **Shestakov Yacht Sales Inc.** имеет большое количество яхт в собственном списке продаж, а также тесно сотрудничает со всеми крупными яхтенными производителями по всему миру.

Для того чтобы купить яхту **NEPHELE — MCMULLEN & WING** а также проконсультироваться по любому вопросу связанному с покупкой, продажей, чартером яхт позвоните по телефону **+7(918)465-66-44**.

# ОГЛАВЛЕНИЕ

ОГЛАВЛЕНИЕ	2
ХАРАКТЕРИСТИКИ	3
Обзор	3
Основная информация	11
Размеры	11
Скорость, вместимость и масса	11
Размещение	12
Корпус и палуба	12
Информация о двигателе	12
ПОДРОБНОЕ ОПИСАНИЕ	13
Detailed Specification	13
Исключения	21
Отказ от ответственности	21
ФОТОГРАФИИ	22
КОНТАКТЫ	25
Контактная информация	25
Телефоны	25
Время работы	25
Адрес	25

# ХАРАКТЕРИСТИКИ

## Обзор

- Commercially registered with charter history
- Easy, efficient sailing with in-boom furling
- World cruising yacht
- Sleeps 7 guests in 3 cabins
- Contemporary and bright interior design
- Large central cockpit

**PRICE: 3,450,000 EUR (VAT paid)**

**Not Offered for Sale or Charter to US Residents whilst in US Waters**

## GENERAL

Type	Sailing yacht	
Flag	Malta	
Dimensions	Length O.A.	34.17m
	Beam	7.78m
	Draft	4.46m
Tonnage	Gross	134
	Displacement	115
Year Built	2003	

Builder McMullen & Wing

Exterior Designer German Frers

Interior Designer McMullen & Wing and Maritime Interiors of Auckland

Construction Alustar H321 Aluminium

Guests 7

Crew 4-5

## MACHINERY

Main Engines Luger – 6 Cylinder Turbo Charged Diesel 425hp

Gear Boxes ZF350A

Shafts & Propellers Hundestad Variable Pitch – VP5

Speed Cruising – 10 knots  
Maximum – 12 knots

Engine Hours 12,468

## AUXILIARY MACHINERY & ELECTRICAL SYSTEMS

---

Generators	2X Northern Lights M984K 32kw (new March 2015)
Generator Hours	Port: 3015 STBD: 2704
Electricity	208 3-phase 60 cycle AC / 120 single phase AC
Shore Power	ASEA 36 kva
Batteries	Sonnenschein A600 Solar 12 OPzV 1200 (new Sept. 2012)

#### TANK CAPACITIES (APPROXIMATE)

Fuel	9,000 litres in 2 tanks
Water	3000 litres in 2 tanks
Watermakers	HEM Series 30 – 12,000L per day
Grey/Black Water	1,750 litres in 1 tank

#### ANCILLARY EQUIPMENT

Steering System	JP3 & Dyneema cable
Bow Thruster	Lewmar 400S Hydraulic
Fuel Separator & Filters	Racor

Fire/ Bilge Pump 4kw AC Johnson, bronze  
1x 3-phase 208v, 1x Jabsco on Main Engine

Sewage Treatment Systems Hamann Mini Treatment System

WC's Actana Waterflush

Air-Conditioning Marine Air – 110 & 220v

#### COMMUNICATION EQUIPMENT

Satcom Inmarsat: C, Inmarsat: Fleet Broadband 250 Thrane & Thrane

Cellular System Ericsson on board

VHF Radiotelephones Furuno + Thrane & Thrane

#### NAVIGATION EQUIPMENT

Chart Plotter FreeTechnics + Sea Map

Automatic Pilot Segatron

Gyro Compass Segatron

---

Radars	Furuno 2115BB
GPS	2x Leica MX420
Navtex	Furuno N+ 300
Echo Sounder	B&G 2000 Hydra
Wind Instruments	B&G Hercules 2000; 4x 20/20s; 10 FFDs
Log	B&G 2000 Hydra

## DECK EQUIPMENT

Anchor Windlass	2x Lewmar 5000 Hydraulic
Ground Tackle	Anchors: STBD 105kg, Port 80kg Chains: STBD 100m, Port 100m
Boat Crane & Davits	Aft deck stowed tender crane. MarQuip Low Boy – 500kg
Swimming Platform	Yes
Passerelle	OpacMare. Hydraulic telescopic on port side of transom
Side Boarding Ladders	Yes
Awning	Cockpit Bimini & Boom Awning
Cockpit Glass	No

Underwater Lights      Yes, at transom

## SAFETY AND SECURITY EQUIPMENT

	Life Rafts x2 AirMar 12person
Safety	EPIRB x1 SAILOR
	SART
	Man Overboard Modules x2
Alarms	FT NaVision
Fire Fighting	FM200, 14 mixed fire extinguishers throughout
Security	N/A

## AUDIO / VISUAL ENTERTAINMENT SYSTEMS

**Saloon:** 42" NEC Samsung LCD TV, B&W speakers, Yamaha Amplifier, Samsung DVD, Apple TV, 1TB WD Hard Drive

**Master Cabin:** 36" Plasma TV, Philips multisystem DVD, Blaupunkt CD/FM

**Guest Cabins:** Blaupunkt CD/FM



**Exterior:** B&W speakers**Crew Mess:** Big Bay 17" LCD, Philips multisystem DVD, Samsung multisystem VHS/world TV receiverDOMESTIC  
EQUIPMENT

Main Galley	AEG 4 burner induction, Miele Oven, Sharp Microwave, Miele dishwasher, custom 4 door Stainless Steel refrigerator, underfloor Stainless Steel freezer, Sub Zero drawer freezer
Laundry	Miele Novatronic washer – model W1926A, Miele Novatronic dryer – model W1526A
Pantry	Sub Zero refrigerator, Panasonic microwave oven, Scotsman icemaker, Stainless Steel sink
Main Deck Bar	Drinks refrigerator

## TENDERS

Italboats Predator 490 with 80hp 4-stroke Suzuki Outboard

WATERSPORTS  
EQUIPMENT

2x Byte sailing dinghies, wakeboard, waterskis, donuts, snorkelling  
Watersports equipment equipment, dive compressor

## ACCOMMODATION

Owner	Full beam cabin with King size berth and ensuite
Guests	2x Twin cabins with ensuite (one cabin with Pullman Bunk)  Captain's cabin with double berth and single berth above with ensuite
Crew	Port side cabin with 2 berths and shared heads  STBD side cabin with single berth and shared heads

## SAILS

Norths Spectra/Carbon Mainsail 2008 (315m<sup>2</sup>)

Norths Spectra/Carbon Jib 2008 (275m<sup>2</sup>)

Norths Spectra/Carbon Staysail 2008 (85m<sup>2</sup>)

Norths 2.2/1.5oz Asymmetric 2008 (1,049m<sup>2</sup>)

Norths Pentex/Spectra Code 0 2008 (533m<sup>2</sup>)

Norths Dacron Storm Trysail

## DISCLAIMER

These particulars have been prepared from information provided by the sellers and are intended as a general guide to the vessel. It is up to the purchaser to confirm details of concern to him by survey, inspection and/or enquiry of the seller and to ensure that the purchase contract properly reflects his concern and specific details upon which he may rely. We always advise an independent survey.

## Основная информация

---

**Тип судна:** Крейсерская яхта

**Модельный год:** 2003

**Год постройки:** 2003

**Страна:** Spain

## Размеры

---

**Длина общая:** 112' 2" (34.17m)

**Ширина:** 25' 7" (7.78m)

**Макс. осадка:** 14' 8" (4.46m)

## Скорость, вместимость и масса

---

**Крейс. скорость:** 10 Kts. (12 MPH)

**Макс. скорость:** 12 Kts. (14 MPH)

**Водоизмещение:** 115 Pounds

**Вместимость воды:** 792.516156 Gallons

**Объем топливного бака:** 9000.077639588  
Gallons

## Размещение

---

Всего кают: 3

Всего коек: 7

Спальные места: 7

Спальных мест экипажа: 5

## Корпус и палуба

---

Материал корпуса: Alustar

## Информация о двигателе

---

Двигатели: 1

Производитель: Luggier

# ПОДРОБНОЕ ОПИСАНИЕ

## Detailed Specification

- Commercially registered with charter history
- Easy, efficient sailing with in-boom furling
- World cruising yacht
- Sleeps 7 guests in 3 cabins
- Contemporary and bright interior design
- Large central cockpit

**PRICE: 3,450,000 EUR (VAT paid)**

**Not Offered for Sale or Charter to US Residents whilst in US Waters**

### GENERAL

Type	Sailing yacht	
Flag	Malta	
Dimensions	Length O.A.	34.17m
	Beam	7.78m
	Draft	4.46m
Tonnage	Gross	134
	Displacement	115
Year Built	2003	

Builder McMullen & Wing

Exterior Designer German Frers

Interior Designer McMullen & Wing and Maritime Interiors of Auckland

Construction Alustar H321 Aluminium

Guests 7

Crew 4-5

## MACHINERY

Main Engines Luger – 6 Cylinder Turbo Charged Diesel 425hp

Gear Boxes ZF350A

Shafts & Propellers Hundestad Variable Pitch – VP5

Speed Cruising – 10 knots  
Maximum – 12 knots

Engine Hours 12,468

## AUXILIARY MACHINERY & ELECTRICAL SYSTEMS

---

Generators	2X Northern Lights M984K 32kw (new March 2015)
Generator Hours	Port: 3015 STBD: 2704
Electricity	208 3-phase 60 cycle AC / 120 single phase AC
Shore Power	ASEA 36 kva
Batteries	Sonnenschein A600 Solar 12 OPzV 1200 (new Sept. 2012)

#### TANK CAPACITIES (APPROXIMATE)

Fuel	9,000 litres in 2 tanks
Water	3000 litres in 2 tanks
Watermakers	HEM Series 30 – 12,000L per day
Grey/Black Water	1,750 litres in 1 tank

#### ANCILLARY EQUIPMENT

Steering System	JP3 & Dyneema cable
Bow Thruster	Lewmar 400S Hydraulic
Fuel Separator & Filters	Racor

Fire/ Bilge Pump 4kw AC Johnson, bronze  
1x 3-phase 208v, 1x Jabsco on Main Engine

Sewage Treatment Systems Hamann Mini Treatment System

WC's Actana Waterflush

Air-Conditioning Marine Air – 110 & 220v

#### COMMUNICATION EQUIPMENT

Satcom Inmarsat: C, Inmarsat: Fleet Broadband 250 Thrane & Thrane

Cellular System Ericsson on board

VHF Radiotelephones Furuno + Thrane & Thrane

#### NAVIGATION EQUIPMENT

Chart Plotter FreeTechnics + Sea Map

Automatic Pilot Segatron

Gyro Compass Segatron



---

Radars	Furuno 2115BB
GPS	2x Leica MX420
Navtex	Furuno N+ 300
Echo Sounder	B&G 2000 Hydra
Wind Instruments	B&G Hercules 2000; 4x 20/20s; 10 FFDs
Log	B&G 2000 Hydra

## DECK EQUIPMENT

Anchor Windlass	2x Lewmar 5000 Hydraulic
Ground Tackle	Anchors: STBD 105kg, Port 80kg Chains: STBD 100m, Port 100m
Boat Crane & Davits	Aft deck stowed tender crane. MarQuip Low Boy – 500kg
Swimming Platform	Yes
Passerelle	OpacMare. Hydraulic telescopic on port side of transom
Side Boarding Ladders	Yes
Awning	Cockpit Bimini & Boom Awning
Cockpit Glass	No

Underwater Lights      Yes, at transom

## SAFETY AND SECURITY EQUIPMENT

Safety	Life Rafts x2 AirMar 12person
	EPIRB x1 SAILOR
	SART
	Man Overboard Modules x2
Alarms	FT NaVision
Fire Fighting	FM200, 14 mixed fire extinguishers throughout
Security	N/A

## AUDIO / VISUAL ENTERTAINMENT SYSTEMS

**Saloon:** 42" NEC Samsung LCD TV, B&W speakers, Yamaha Amplifier, Samsung DVD, Apple TV, 1TB WD Hard Drive

**Master Cabin:** 36" Plasma TV, Philips multisystem DVD, Blaupunkt CD/FM

**Guest Cabins:** Blaupunkt CD/FM

**Exterior:** B&W speakers

**Crew Mess:** Big Bay 17" LCD, Philips multisystem DVD, Samsung multisystem VHS/world TV receiver

## DOMESTIC EQUIPMENT

Main Galley AEG 4 burner induction, Miele Oven, Sharp Microwave, Miele dishwasher, custom 4 door Stainless Steel refrigerator, underfloor Stainless Steel freezer, Sub Zero drawer freezer

Laundry Miele Novatronic washer – model W1926A, Miele Novatronic dryer – model W1526A

Pantry Sub Zero refrigerator, Panasonic microwave oven, Scotsman icemaker, Stainless Steel sink

Main Deck Bar Drinks refrigerator

## TENDERS

Italboats Predator 490 with 80hp 4-stroke Suzuki Outboard

## WATERSPORTS EQUIPMENT

2x Byte sailing dinghies, wakeboard, waterskis, donuts, snorkelling  
Watersports equipment equipment, dive compressor

## ACCOMMODATION

Owner	Full beam cabin with King size berth and ensuite
Guests	2x Twin cabins with ensuite (one cabin with Pullman Bunk)  Captain's cabin with double berth and single berth above with ensuite
Crew	Port side cabin with 2 berths and shared heads  STBD side cabin with single berth and shared heads

## SAILS

Norths Spectra/Carbon Mainsail 2008 (315m<sup>2</sup>)

Norths Spectra/Carbon Jib 2008 (275m<sup>2</sup>)

Norths Spectra/Carbon Staysail 2008 (85m<sup>2</sup>)

Norths 2.2/1.5oz Asymmetric 2008 (1,049m<sup>2</sup>)

Norths Pentex/Spectra Code 0 2008 (533m<sup>2</sup>)

Norths Dacron Storm Trysail

## DISCLAIMER

These particulars have been prepared from information provided by the sellers and are intended as a general guide to the vessel. It is up to the purchaser to confirm details of concern to him by survey, inspection and/or enquiry of the seller and to ensure that the purchase contract properly reflects his concern and specific details upon which he may rely. We always advise an independent survey.

## Исключения

---

При продаже яхты исключаются личные вещи владельца.

## Отказ от ответственности

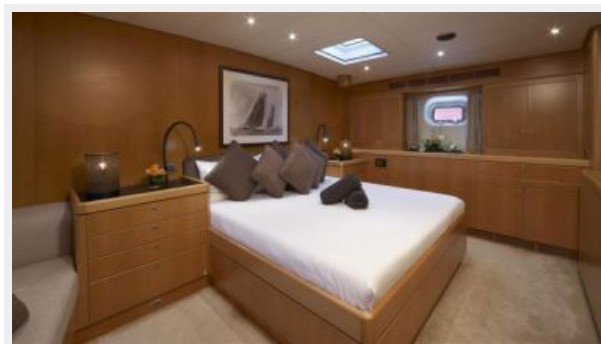
---

Компания предоставляет описание судна или яхты добросовестно, но не может гарантировать точность этой информации, а также не ручается за техническое состояние. Покупатель должен проинструктировать своих агентов или оценщиков исследовать представленную информацию более подробно, по собственному желанию. Продажа судна или яхты, изменение цены или снятие с продажи будет происходить без предварительного уведомления.

# ФОТОГРАФИИ









# КОНТАКТЫ

---

Андрей Шестаков (Andrey Shestakov) – ведущий яхтенный брокер отдела продаж яхт и судов компании Shestakov Yacht Sales Inc. Официальный представитель Shestakov Yacht Sales Inc. для русскоговорящих клиентов в центральном офисе компании в Майами/Форт Лодердейл/Флорида/США.

## Контактная информация

---

Email: [andrey@shestakovyachtsales.com](mailto:andrey@shestakovyachtsales.com)

Web: [shestakovyachtsales.com](http://shestakovyachtsales.com)

## Телефоны

---

Краснодарский край: **+7(918)465-66-44**

США, Майами, Флорида: **+1(954)274-4435**

## Время работы

---

Понедельник – Суббота: **9:00 - 21:00**  
EDT

Воскресенье: **Закрето**

## Адрес

---



Harbour Towne Marina, 850 NE 3rd St,  
STE 213, Dania, FL 33004