

J CREW — AZIMUT



Builder: [AZIMUT](#)

Year Built: 2015

Model: Motor Yacht

Price: PRICE ON APPLICATION

Location: United States

LOA: 43' 0" (13.11m)

Beam: 14' 5" (4.39m)

Max Draft: 3' 11" (1.19m)

Cruise Speed: 16 Kts. (18 MPH)

Max Speed: 21 Kts. (24 MPH)

Our experienced yacht broker, Andrey Shestakov, will help you choose and buy a yacht that best suits your needs J Crew — AZIMUT from our catalogue. Presently, at Shestakov Yacht Sales Inc., we have a wide variety of yachts available on our sale's list. We also work in close contact with all the big yacht manufacturers from all over the world.

If you would like to buy a yacht J Crew — AZIMUT or would like help answering any questions concerning purchasing, selling or chartering a yacht, please call **+1(954)274-4435**

TABLE OF CONTENTS

TABLE OF CONTENTS	2
SPECIFICATIONS	6
Overview	6
Basic Information	6
Dimensions	6
Speed, Capacities and Weight	7
Accommodations	7
Hull and Deck Information	7
Engine Information	7
DETAILED INFORMATION	8
Additional Information	8
Disclaimer	12
Exclusions	12
Disclaimer	12
PHOTOS	14
Profile	14
Profile	14
Profile	14
Profile	14
Profile	14
Profile	14
Galley	15
Stern	15
Galley	15
Galley	15
Galley	15
Saloon	15
Dinette	16

Dinette	16
Dinette	16
Dinette	16
Dinette	16
Helm station	16
Helm station	17
Helm station	17
Helm station	17
Helm station	17
Helm station	17
Stairs to stateroom	17
Stateroom	17
Stateroom	18
Stateroom	18
Head	18
Stateroom	18
Head	19
Stateroom	19
Stateroom	19
Stateroom	19
Head	20
Head	20
Helm station	20
Helm station	20
Helm station	20
Helm station	20
Helm station	21
Helm station	21
Helm station	21
Helm station	21

Flybridge	21
Flybridge	21
Flybridge	22
Flybridge	22
Flybridge	22
Flybridge	22
Flybridge	22
Flybridge	22
Flybridge	22
Flybridge	23
Flybridge	23
Stairs to stern	23
Stern	23
Stern	23
Stern	23
Stern	24
Starboard side	24
Bow	24
Bow sun tanning pads	24
Bow sun tanning pads	24
Bow sun tanning pads	24
Bow sun tanning pads	25
Swimming platform	25
Plank	25
Plank	25
Plank	25
Plank	25
CONTACTS	26
Contact details	26
Telephones	26

Office hours	26
Address	26

SPECIFICATIONS

Overview

Preliminary New Listing

Priced to Sale Immediately

- Low engines hours
- Joystick Control
- JL exterior audio speakers

- Upgrade SAT (TRACVISION TV3)
- Upgrade Salon Wood flooring
- Upgrade Bose surround system
- Bow Thruster

Basic Information

Category: Motor Yacht

Model Year: 2015

Year Built: 2015

Country: United States

Vessel Top: Bimini Top

Fly Bridge: Yes

Cockpit: Yes

Dimensions

LOA: 43' 0" (13.11m)

Beam: 14' 5" (4.39m)

Max Draft: 3' 11" (1.19m)

Speed, Capacities and Weight

Cruise Speed: 16 Kts. (18 MPH)

Max Speed: 21 Kts. (24 MPH)

Displacement: 34000 Pounds

Water Capacity: 158 Gallons

Holding Tank: 130 Gallons

Fuel Capacity: 443 Gallons

Accommodations

Total Cabins: 3

Total Berths: 5

Sleeps: 7

Total Heads: 2

Hull and Deck Information

Hull Material: Fiberglass

Engine Information

Engines: 2

Manufacturer: Cummins

Model: QSB 5.9L

Engine Type: Inboard

Fuel Type: Diesel

DETAILED INFORMATION

Additional Information

US Specifications

Built to US specifications. US package included.

Salon/Dinette

- Leather Salon "C"-Shaped sofa to starboard
- Walnut furniture w/ storage to port w/ drawers
- Air conditioning controls
- Expandable Walnut dining table w/ S.S. Pedestal
- Overhead lighting w/ dimmers
- Wood flooring
- Venetian blinds
- Opening window
- UPGRADE: Wooden floors
- UPGRADE: Deluxe curtain for salon door
- UPGRADE: Samsung TV
- UPGRADE: Bose surround
- UPGRADE: SAT (TRACVISION TV3)

Galley

- Aft salon location
- Isotherm Upright refrigerator/freezer
- Brushed limestone laminate worktops
- Stainless steel sink basin
- 3 Burner stove w/ fiddle rail
- Built-in and drawer storage
- GFI receptacle w/additional sockets
- Wood floors
- UPGRADE: Miele microwave/convection oven
- UPGRADE: Refrigerator/freezer
- UPGRADE: Wooden floors

Master Stateroom

- Oversized master berth
- Nightstand shelves
- Air conditioning controls
- Opening windows w/blinds

- Full size wardrobe hanging locker to port
- Wardrobe with shelves to starboard
- Additional storage under berth
- Overhead lighting
- Reading lights
- Carpeting
- UPGRADE: Samsung LED TV
- UPGRADE: Sat TV
- UPGRADE: Safe

Master Stateroom Head

- Separate fiberglass shower with seating shelf
- TECMA head
- Sink bowl with single lever faucet and expansive counter tops
- Wood floors
- GFI receptacle
- Overhead lighting
- Opening porthole window with privacy curtain
- Cabinet storage, towel holder
- Mirrored Vanity

Guest Stateroom (Port Side)

- Side by side twin berths w/ nightstand
- Air conditioning controls
- Opening Porthole window w/ Venetian blinds
- Oversized stand-up closet/hanging locker
- Carpeting
- Reading lights
- 12V receptacle
- UPGRADE: Samsung LED TV
- UPGRADE: Sat TV

Day/Guest Head

- Access from the corridor or guest stateroom
- Separate fiberglass shower with seating shelf
- TECMA head
- Sink bowl with single lever faucet and expansive counter tops
- Mirrored Vanity
- Wood floors
- GFI receptacle
- Overhead lighting

- Storage cabinets, towel holder
- Opening Porthole window w/ Venetian blinds

Lowe Helm

- Leather oversized adjustable helm chair
- Instrument, Systems and Breaker Panel
- Cummins Electronic Controls
- Cummins SmartCraft Display
- Raymarine E series Hybrid GPS
- Raymarine Digital Radar
- Raymarine Tri Data
- Raymarine VHF Radio
- Trim Tab controller
- Chaincounter
- Electric searchlight control
- Windshield wiper controls
- Starboard opening window
- Ritchie compass
- Gauges: fuel, water
- Tilt wheel
- Overhead lighting
- UPGRADE: XENTA Joystick Control
- UPGRADE: Raymarine Gold Package
- UPGRADE: Chaincounter
- UPGRADE: searchlight control

Flybridge Helm/Electronics

- Adjustable helm chair
- Cummins Electronic controls
- Raymarine E series Hybrid GPS
- Raymarine Digital Radar
- Raymarine Tri Data
- VHF Radio
- Bennett Trim Tab controller
- Jabsco Searchlight
- Chaincounter
- Gauges: fuel, water
- Tilt wheel
- UPGRADE: XENTA Joystick Control
- Fusion MS-NRX200i

Flybridge

- Smoked Plexi windshield
- Forward starboard "C" seating area w/ Hi-Lo table
- Flybridge Mast for Electronics
- Plexi Hatchway door
- Rail package
- Open Aft Fly section
- UPGRADE: Wet bar on Fly, Sink, Fridge, BBQ (Kenyon)
- UPGRADE: Table in Hi-Lo w/ sunbathing insert
- UPGRADE: Bimini Top
- UPGRADE: Bimini Extension
- UPGRADE: Double Paddle Board holders
- JL Audio Speakers

Hull/Cockpit/Deck

- Cockpit seating w/ table
- Opacmare glass entry doors with stainless steel frames
- Recessed lighting in the aft deck overhang
- Port and starboard aft boarding gates
- Exterior black mesh snap on window sunshades
- Bow Sunbathing Cushions
- Lockers and storage compartments
- Rail package
- Stainless Steel rub rail
- Battery on/off switches
- Manual fire pull over-ride pin on aft deck
- Manual bilge pump
- Fresh water transom shower
- Dockside water connection
- Engine room access door in aft deck floor
- UPGRADE: Painted Hull in Urals Grey
- UPGRADE: Telescopic Gangway (with lifting capabilities)
- UPGRADE: Teak Cockpit Flooring
- UPGRADE: Teak Swim Platform
- UPGRADE: S.S. hull side trim package
- UPGRADE: Awning for aft cockpit
- UPGRADE: Cockpit table
- UPGRADE: Cockpit chairs
- UPGRADE: External Cover Package

Electrical Equipment

- Dripless shaft seals
- Underwater exhaust w/ slow speed bypass

- Bilge pumps
- Bilge air induction system
- Battery Charger
- Chiller Air conditioning system
- Dual Racor fuel filters
- Windlass with all chain, foot pedals, SS chute, and Delta anchor
- UPGRADE: Bow Thruster
- UPGRADE: Chain Washing System

Engine Room

- Cummins QSB 5.9 L, 355 HP with 780 hours engines
- Onan generator 13.5kw
- Dripless shaft seals
- Underwater exhaust w/ slow speed bypass
- Bilge pumps
- Bilge air induction system
- Battery Charger
- Chiller Air conditioning system
- Dual Racor fuel filters
- Windlass with all chain, foot pedals, SS chute, and Delta anchor
- UPGRADE: Bow Thruster
- UPGRADE: Chain Washing System

Exclusions

- Owners personal items or any other item not listed here in or at time of viewing

Disclaimer

The Company offers the details of this vessel in good faith but cannot guarantee or warrant the accuracy of this information nor warrant the condition of the vessel. A buyer should instruct his agents, or his surveyors, to investigate such details as the buyer desires validated. This vessel is offered subject to prior sale, price change, or withdrawal without notice.

Exclusions

Owner's personal belongings.

Disclaimer

The Company offers the details of this vessel or yacht in good faith but cannot guarantee or

warrant the accuracy of this information nor warrant the condition of the vessel. A buyer should instruct his representatives, agents, or his surveyors, to investigate such details as the buyer desires validated. This vessel or yacht is offered subject to prior sale, price change, or withdrawal without notice.

PHOTOS

Profile



Profile



Profile



Profile



Profile



Profile



Stern



Galley



Galley



Galley



Galley



Saloon



Dinette



Dinette



Dinette



Dinette



Dinette



Helm station



Helm station



Helm station



Helm station



Helm station



Stairs to stateroom



Stateroom



Stateroom



Stateroom



Stateroom



Head



Head



Stateroom



Stateroom



Stateroom



Head



Head



Helm station



Helm station



Helm station



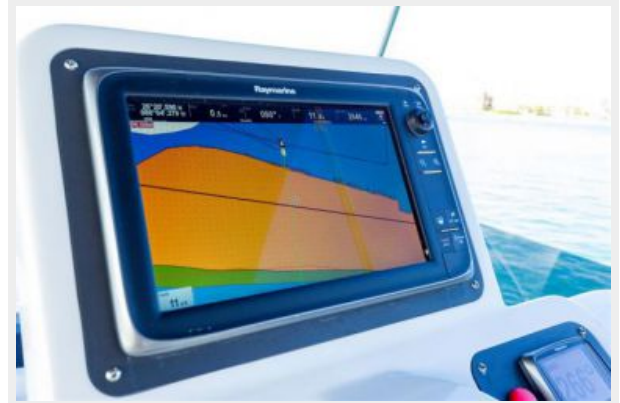
Helm station



Helm station



Helm station



Helm station



Helm station



Flybridge



Flybridge



Flybridge



Flybridge



Flybridge



Flybridge



Flybridge



Flybridge



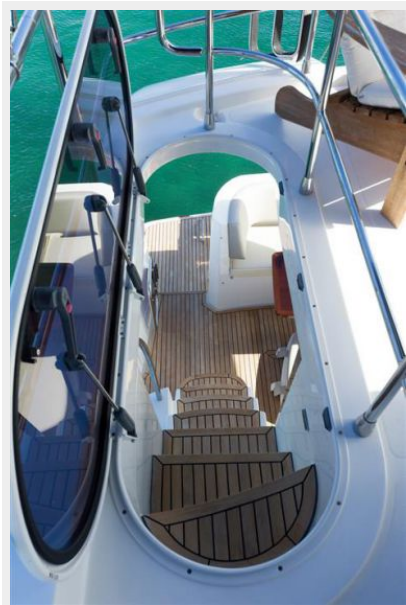
Flybridge



Flybridge



Stairs to stern



Stern



Stern



Stern



Stern



Starboard side



Bow



Bow sun tanning pads



Bow sun tanning pads



Bow sun tanning pads



Bow sun tanning pads



Swimming platform



Plank



Plank



Plank



Plank



CONTACTS

Andrey Shestakov, leading yacht broker of the sales department of Shestakov Yacht Sales Inc. Shestakov Yacht Sales Inc., the official representative of the Miami/Fort Lauderdale FL headquarters.

Contact details

Email: andrey@shestakovyachtsales.com

Web: shestakovyachtsales.com/en/

Telephones

USA: +1(954)274-4435

Office hours

Monday – Saturday: **9:00 - 21:00** EDT

Sunday: **closed**

Address



Harbour Towne Marina, 850 NE 3rd St,
STE 213, Dania, FL 33004