

J CREW — AZIMUT



Судостроитель: AZIMUT

Год постройки: 2015

Модель: Моторная яхта

Цена: ЦЕНА ЯХТЫ ПО ЗАПРОСУ

Местонахождение: United States

Длина общая: 43' 0" (13.11m)

Ширина: 14' 5" (4.39m)

Макс. осадка: 3' 11" (1.19m)

Крейс. скорость: 16 Kts. (18 MPH)

Макс. скорость: 21 Kts. (24 MPH)

Купить J Crew — AZIMUT а также выбрать подходящую вам яхту из нашего каталога яхт вам поможет опытный яхтенный брокер Андрей Шестаков. На сегодняшний день компания Shestakov Yacht Sales Inc. имеет большое количество яхт в собственном списке продаж, а также тесно сотрудничает со всеми крупными яхтенными производителями по всему миру.

Для того чтобы купить яхту J Crew — AZIMUT а также проконсультироваться по любому вопросу связанному с покупкой, продажей, чартером яхт позвоните по телефону **+7(918)465-66-44**.

ОГЛАВЛЕНИЕ

ОГЛАВЛЕНИЕ	2
ХАРАКТЕРИСТИКИ	6
Обзор	6
Основная информация	6
Размеры	6
Скорость, вместимость и масса	7
Размещение	7
Корпус и палуба	7
Информация о двигателе	7
ПОДРОБНОЕ ОПИСАНИЕ	8
Additional Information	8
Disclaimer	12
Исключения	12
Отказ от ответственности	12
ФОТОГРАФИИ	14
Profile	14
Profile	14
Profile	14
Profile	14
Profile	14
Profile	14
Galley	15
Stern	15
Galley	15
Galley	15
Galley	15
Saloon	15
Dinette	16

Dinette	16
Dinette	16
Dinette	16
Dinette	16
Helm station	16
Helm station	17
Helm station	17
Helm station	17
Helm station	17
Helm station	17
Stairs to stateroom	17
Stateroom	17
Stateroom	18
Stateroom	18
Head	18
Stateroom	18
Head	19
Stateroom	19
Stateroom	19
Stateroom	19
Head	20
Head	20
Helm station	20
Helm station	20
Helm station	20
Helm station	20
Helm station	21
Helm station	21
Helm station	21
Helm station	21

Flybridge	21
Flybridge	21
Flybridge	22
Flybridge	22
Flybridge	22
Flybridge	22
Flybridge	22
Flybridge	22
Flybridge	22
Flybridge	23
Flybridge	23
Stairs to stern	23
Stern	23
Stern	23
Stern	23
Stern	24
Starboard side	24
Bow	24
Bow sun tanning pads	24
Bow sun tanning pads	24
Bow sun tanning pads	24
Bow sun tanning pads	25
Swimming platform	25
Plank	25
Plank	25
Plank	25
Plank	25
КОНТАКТЫ	26
Контактная информация	26
Телефоны	26

Время работы	26
Адрес	26

ХАРАКТЕРИСТИКИ

Обзор

Preliminary New Listing

Priced to Sale Immediately

- Low engines hours
- Joystick Control
- JL exterior audio speakers

- Upgrade SAT (TRACVISION TV3)
- Upgrade Salon Wood flooring
- Upgrade Bose surround system
- Bow Thruster

Основная информация

Тип судна: Моторная яхта

Модельный год: 2015

Год постройки: 2015

Страна: United States

Верх: Bimini Top

Открытая палуба мостика: Да

Кубрик: Да

Размеры

Длина общая: 43' 0" (13.11m)

Ширина: 14' 5" (4.39m)

Макс. осадка: 3' 11" (1.19m)

Скорость, вместимость и масса

Крейс. скорость: 16 Kts. (18 MPH)

Макс. скорость: 21 Kts. (24 MPH)

Водоизмещение: 34000 Pounds

Вместимость воды: 158 Gallons

Вместимость сточного бака: 130 Gallons **Объем топливного бака:** 443 Gallons

Размещение

Всего кают: 3

Всего коек: 5

Спальные места: 7

Всего ком. состава: 2

Корпус и палуба

Материал корпуса: Fiberglass

Информация о двигателе

Двигатели: 2

Производитель: Cummins

Модель: QSB 5.9L

Тип двигателя: Inboard

Тип топлива: Diesel

ПОДРОБНОЕ ОПИСАНИЕ

Additional Information

US Specifications

Built to US specifications. US package included.

Salon/Dinette

- Leather Salon "C"-Shaped sofa to starboard
- Walnut furniture w/ storage to port w/ drawers
- Air conditioning controls
- Expandable Walnut dining table w/ S.S. Pedestal
- Overhead lighting w/ dimmers
- Wood flooring
- Venetian blinds
- Opening window
- UPGRADE: Wooden floors
- UPGRADE: Deluxe curtain for salon door
- UPGRADE: Samsung TV
- UPGRADE: Bose surround
- UPGRADE: SAT (TRACVISION TV3)

Galley

- Aft salon location
- Isotherm Upright refrigerator/freezer
- Brushed limestone laminate worktops
- Stainless steel sink basin
- 3 Burner stove w/ fiddle rail
- Built-in and drawer storage
- GFI receptacle w/additional sockets
- Wood floors
- UPGRADE: Miele microwave/convection oven
- UPGRADE: Refrigerator/freezer
- UPGRADE: Wooden floors

Master Stateroom

- Oversized master berth
- Nightstand shelves
- Air conditioning controls
- Opening windows w/blinds

- Full size wardrobe hanging locker to port
- Wardrobe with shelves to starboard
- Additional storage under berth
- Overhead lighting
- Reading lights
- Carpeting
- UPGRADE: Samsung LED TV
- UPGRADE: Sat TV
- UPGRADE: Safe

Master Stateroom Head

- Separate fiberglass shower with seating shelf
- TECMA head
- Sink bowl with single lever faucet and expansive counter tops
- Wood floors
- GFI receptacle
- Overhead lighting
- Opening porthole window with privacy curtain
- Cabinet storage, towel holder
- Mirrored Vanity

Guest Stateroom (Port Side)

- Side by side twin berths w/ nightstand
- Air conditioning controls
- Opening Porthole window w/ Venetian blinds
- Oversized stand-up closet/hanging locker
- Carpeting
- Reading lights
- 12V receptacle
- UPGRADE: Samsung LED TV
- UPGRADE: Sat TV

Day/Guest Head

- Access from the corridor or guest stateroom
- Separate fiberglass shower with seating shelf
- TECMA head
- Sink bowl with single lever faucet and expansive counter tops
- Mirrored Vanity
- Wood floors
- GFI receptacle
- Overhead lighting

- Storage cabinets, towel holder
- Opening Porthole window w/ Venetian blinds

Lowe Helm

- Leather oversized adjustable helm chair
- Instrument, Systems and Breaker Panel
- Cummins Electronic Controls
- Cummins SmartCraft Display
- Raymarine E series Hybrid GPS
- Raymarine Digital Radar
- Raymarine Tri Data
- Raymarine VHF Radio
- Trim Tab controller
- Chaincounter
- Electric searchlight control
- Windshield wiper controls
- Starboard opening window
- Ritchie compass
- Gauges: fuel, water
- Tilt wheel
- Overhead lighting
- UPGRADE: XENTA Joystick Control
- UPGRADE: Raymarine Gold Package
- UPGRADE: Chaincounter
- UPGRADE: searchlight control

Flybridge Helm/Electronics

- Adjustable helm chair
- Cummins Electronic controls
- Raymarine E series Hybrid GPS
- Raymarine Digital Radar
- Raymarine Tri Data
- VHF Radio
- Bennett Trim Tab controller
- Jabsco Searchlight
- Chaincounter
- Gauges: fuel, water
- Tilt wheel
- UPGRADE: XENTA Joystick Control
- Fusion MS-NRX200i

Flybridge

- Smoked Plexi windshield
- Forward starboard "C" seating area w/ Hi-Lo table
- Flybridge Mast for Electronics
- Plexi Hatchway door
- Rail package
- Open Aft Fly section
- UPGRADE: Wet bar on Fly, Sink, Fridge, BBQ (Kenyon)
- UPGRADE: Table in Hi-Lo w/ sunbathing insert
- UPGRADE: Bimini Top
- UPGRADE: Bimini Extension
- UPGRADE: Double Paddle Board holders
- JL Audio Speakers

Hull/Cockpit/Deck

- Cockpit seating w/ table
- Opacmare glass entry doors with stainless steel frames
- Recessed lighting in the aft deck overhang
- Port and starboard aft boarding gates
- Exterior black mesh snap on window sunshades
- Bow Sunbathing Cushions
- Lockers and storage compartments
- Rail package
- Stainless Steel rub rail
- Battery on/off switches
- Manual fire pull over-ride pin on aft deck
- Manual bilge pump
- Fresh water transom shower
- Dockside water connection
- Engine room access door in aft deck floor
- UPGRADE: Painted Hull in Urals Grey
- UPGRADE: Telescopic Gangway (with lifting capabilities)
- UPGRADE: Teak Cockpit Flooring
- UPGRADE: Teak Swim Platform
- UPGRADE: S.S. hull side trim package
- UPGRADE: Awning for aft cockpit
- UPGRADE: Cockpit table
- UPGRADE: Cockpit chairs
- UPGRADE: External Cover Package

Electrical Equipment

- Dripless shaft seals
- Underwater exhaust w/ slow speed bypass

- Bilge pumps
- Bilge air induction system
- Battery Charger
- Chiller Air conditioning system
- Dual Racor fuel filters
- Windlass with all chain, foot pedals, SS chute, and Delta anchor
- UPGRADE: Bow Thruster
- UPGRADE: Chain Washing System

Engine Room

- Cummins QSB 5.9 L, 355 HP with 780 hours engines
- Onan generator 13.5kw
- Dripless shaft seals
- Underwater exhaust w/ slow speed bypass
- Bilge pumps
- Bilge air induction system
- Battery Charger
- Chiller Air conditioning system
- Dual Racor fuel filters
- Windlass with all chain, foot pedals, SS chute, and Delta anchor
- UPGRADE: Bow Thruster
- UPGRADE: Chain Washing System

Exclusions

- Owners personal items or any other item not listed here in or at time of viewing

Disclaimer

The Company offers the details of this vessel in good faith but cannot guarantee or warrant the accuracy of this information nor warrant the condition of the vessel. A buyer should instruct his agents, or his surveyors, to investigate such details as the buyer desires validated. This vessel is offered subject to prior sale, price change, or withdrawal without notice.

Исключения

При продаже яхты исключаются личные вещи владельца.

Отказ от ответственности

Компания предоставляет описание судна или яхты добросовестно, но не может

гарантировать точность этой информации, а также не ручается за техническое состояние. Покупатель должен проинструктировать своих агентов или оценщиков исследовать представленную информацию более подробно, по собственному желанию. Продажа судна или яхты, изменение цены или снятие с продажи будет происходить без предварительного уведомления.

ФОТОГРАФИИ

Profile



Profile



Profile



Profile



Profile



Profile



Stern



Galley



Galley



Galley



Galley



Saloon



Dinette



Dinette



Dinette



Dinette



Dinette



Helm station



Helm station



Helm station



Helm station



Helm station



Stairs to stateroom



Stateroom



Stateroom



Stateroom



Stateroom



Head



Head



Stateroom



Stateroom



Stateroom



Head



Head



Helm station



Helm station



Helm station



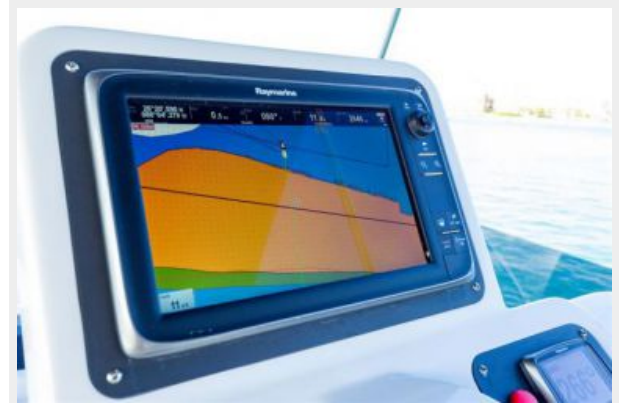
Helm station



Helm station



Helm station



Helm station



Helm station



Flybridge



Flybridge



Flybridge



Flybridge



Flybridge



Flybridge



Flybridge



Flybridge



Flybridge



Flybridge



Stairs to stern



Stern



Stern



Stern



Stern



Starboard side



Bow



Bow sun tanning pads



Bow sun tanning pads



Bow sun tanning pads



Bow sun tanning pads



Plank



Plank



Swimming platform



Plank



Plank



КОНТАКТЫ

Андрей Шестаков (Andrey Shestakov) – ведущий яхтенный брокер отдела продаж яхт и судов компании Shestakov Yacht Sales Inc. Официальный представитель Shestakov Yacht Sales Inc. для русскоговорящих клиентов в центральном офисе компании в Майами/Форт Лодердейл/Флорида/США.

Контактная информация

Email: andrey@shestakovyachtsales.com

Web: shestakovyachtsales.com

Телефоны

Краснодарский край: **+7(918)465-66-44**

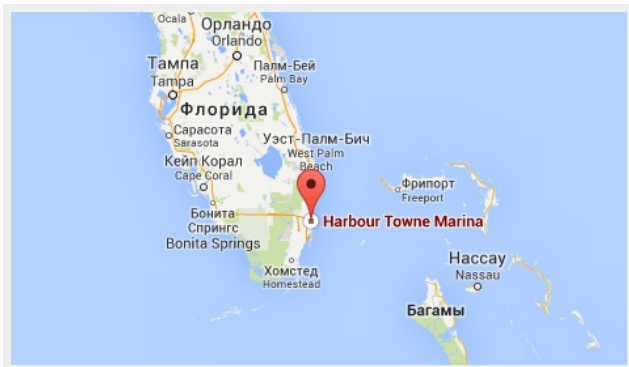
США, Майами, Флорида: **+1(954)274-4435**

Время работы

Понедельник – Суббота: **9:00 - 21:00**
EDT

Воскресенье: **Закрыто**

Адрес



Harbour Towne Marina, 850 NE 3rd St,
STE 213, Dania, FL 33004