

BLISS — DEAN CATAMARANS



Судостроитель: DEAN CATAMARANS

Год постройки: 2012

Модель: Катамаран

Цена: ЦЕНА ЯХТЫ ПО ЗАПРОСУ

Местонахождение: Thailand

Длина общая: 50' 0" (15.24m)

Ширина: 26' 11" (8.20m)

Макс. осадка: 5' 0" (1.52m)

Крейс. скорость: 7 Kts. (8 MPH)

Макс. скорость: 10 Kts. (12 MPH)

Купить Bliss — DEAN CATAMARANS а также выбрать подходящую вам яхту из нашего каталога яхт вам поможет опытный яхтенный брокер Андрей Шестаков. На сегодняшний день компания Shestakov Yacht Sales Inc. имеет большое количество яхт в собственном списке продаж, а также тесно сотрудничает со всеми крупными яхтенными производителями по всему миру.

Для того чтобы купить яхту Bliss — DEAN CATAMARANS а также проконсультироваться по любому вопросу связанному с покупкой, продажей, чартером яхт позвоните по телефону **+7(918)465-66-44**.

ОГЛАВЛЕНИЕ

ОГЛАВЛЕНИЕ	2
ХАРАКТЕРИСТИКИ	4
Обзор	4
Основная информация	4
Размеры	4
Скорость, вместимость и масса	4
Размещение	5
Корпус и палуба	5
Информация о двигателе	5
ПОДРОБНОЕ ОПИСАНИЕ	6
General	6
Engines, Drives, Props, Etc.	6
Electronics	6
Electrical Equipment	7
Plumbing	8
Hull and Deck	9
Sails and Mast	9
Safety & Fire Protection	10
Antifouling	10
Interior	10
Aircon - Refrigeration Gas	10
Water Toys	11
Исключения	11
Отказ от ответственности	11
ФОТОГРАФИИ	12
КОНТАКТЫ	15
Контактная информация	15
Телефоны	15

Время работы	15
Адрес	15

ХАРАКТЕРИСТИКИ

Обзор

Built with pride in South Africa this Dean 5000 'Bliss' is now in Phuket, Thailand and is available for sale as the owner is upgrading. Fully fitted out for blue water sailing with everything you need for living weeks onboard at a time. She has huge interior volume and so is a very comfortable cat with a owners version layout. The whole boat is managed by a touch screen monitoring system - Czone. Every possible option has been fitted to this boat to make her easy to handle by a couple in any condition. She is a stunning unique yacht that is sure to impress all that enquire. Start the adventure today!

- 2 x Craftsman 85hp diesels
- Owners version
- Czone monitoring system
- Furuno instrumentation
- Flir camera
- Electric winches
- CE certified category A

Основная информация

Тип судна: Катамаран

Модельный год: 2012

Год постройки: 2012

Страна: Thailand

Размеры

Длина общая: 50' 0" (15.24m)

Ширина: 26' 11" (8.20m)

Макс. осадка: 5' 0" (1.52m)

Скорость, вместимость и масса

Крейс. скорость: 7 Kts. (8 MPH)

Макс. скорость: 10 Kts. (12 MPH)

Водоизмещение: 41888 Pounds

Вместимость воды: 209 Gallons

Объем топливного бака: 209 Gallons

Размещение

Всего кают: 3

Всего коек: 6

Всего ком. состава: 3

Корпус и палуба

Материал корпуса: GRP

Материал палубы: GRP

Дизайнер корпуса: Peter Dean

Дизайнер экстерьера: Peter Dean

Дизайнер интерьера: Peter Dean

Информация о двигателе

Двигатели: 2

Производитель: Craftsman

Модель: Craftsman C480 2

ПОДРОБНОЕ ОПИСАНИЕ

General

Length overall: 15.39m

Engines: 2 x 85 HP

Length waterline: 15.15 m

Fresh Water: 2 x 395 ltr

Beam: 8 m

Diesel: 2 x 395 ltr

Draft: 1.5m

CE Certified: Category A

Mast height above waterline: 24m

Light craft displacement : 19000 KG (mlcc)

Sail Area – Mainsail: 100 m²

Sail Area-Jib: 42 m²

Bridge deck clearance: 1000mm

Sail Area-Reacher: 90 m²

Engines, Drives, Props, Etc.

- 2 x Craftsman C4.80 marine diesel engines
- SD-12 ZF saildrives with 2.49:1 reduction ratio
- Alternators - 2 x Mastervolt 130 Amp High Output with Balmar Controller
- Flexofold 3 bladed folding propellers 20x14
- Rope strippers - Ambassador Marine - 2 x 3 bladed
- Oil change pumps 12V for 2 x engines, 2 x saildrives, 1 x generator
- Hella turbo fans - mounted in each engine compartment

Electronics

- MacMini navigational computer with MaxSea TZ Explorer v. 2.0.4 with weather routing

module

- Samsung S23A950 3d display at nav table
- MapMedia vector charts for Australia, New Zealand and Oceania, Africa, Mediterranean Sea,
- Africa, Mediterranean, and Caribbean.
- Furuno TZTouch 14" at the helm (new November 2015)
- Furuno GP330B GPS aerial
- Furuno DRS4D 4KW 36-mile Radar dome fitted on mast
- Furuno FA 50 AIS transceiver c/w GPA 0175 with AC Marine CX-4 1.2m whip aerial
- Furuno Navpilot 711 Autopilot with helm station control
- Furuno PG700 heading sensor
- Second Furuno FAP7011 control display at nav station
- Furuno weatherfax FAX 30 with FAX 5 preamp and 1.2m whip Banten aerial
- Furuno - 2 x RD-33 repeaters (new December 2015)
- Furuno wind FI501 instrument with FI5001 anemometer
- Furuno depth/fish finder with bottom discrimination BBDS1 with 520-5PSD
- Airmar CS4500 speed/temp transducer
- Echomax Active XS dual band radar target enhancer
- AXIS Q6032 network camera
- Echopilot 3D forward looking sounder supplied
- WI-FI antennae - Banten 02188 fibreglass stubby whip
- ICOM IC M505 VHF radio with Command MIC in cockpit
- ICOM IC-M801E/with AT-141 ATU, cabling, copper strap, 455x152mm ground plate, Banten 7m
- whip with brackets etc fit port side
- Upgrade all mast co-axial cable to RG-214 double screen (VHF/AIS/Weatherfax)
- Two hailer-horn on mast connected to M505 VHF radio - fitted under radome
- AIRMAR WX200 ultrasonic weather station NMEA 2000
- LG 42 inch 3D LED flat screen
- Electro-mechanical TV lift system for TV (stainless steel custom manufactured)
- FLIR camera - M625L 640x480 with AXIS 241 network server connected to network and
- chartplotter
- KVH V3 MiniVSAT sat phone and broadband system
- Iridium Open Port system
- RedBox router integrating satellite communications, 3G cellular and WiFi connectivity
- Fusion 700i radio with remote control at the helm
- Speakers - 2 x BOSE in targa, 2 x Fusion at helm station, 2 x Fusion in salon, BOSE soundbar in salon
- Chain counter and control in cockpit (by Quick)

Electrical Equipment

- Batteries - Mastervolt 6 x 2V Gel cells totalling 1000 Ahrs
- CZone full Digital AC 220V switching
- CZone full Digital switching 12V DC equipment
- CZone USB connection at nav station
- CZone Touch-10 screen at nav station (new December 2015)
- Genset - Fischer Panda 10,000i - variable speed - 220V/50 HZ - with stainless steel sound insulation
- shell
- Watt&Sea Cruising Hydrogenerator with removable bracket on starboard transom
- Silent Wind 400+ generator mounted on stainless steel pole on starboard aft deck (new October 2015)
- Mastervolt EasyView control touchscreen at the nav station
- Mastervolt MasterAdjust USB connection at the nav station
- Mastervolt - Inverter / charger - MV 12/2500/100 Combi's X 2 units in parallel
- Mastervolt - Additional battery charger - Chargemaster 100 amp
- Isolation transformer 3.5Kva ISO with auto voltage select
- Solar panels - 6 x 145 Watt on saloon coachroof(recessed) and hinged on inside and adjustable (gullwing)
- Solar charger - Flexmax 80 amp MPPT regulators
- 2nd shore power inlet with C/B, Galvanic Isolator, shore lead etc.
- Analogue fuel, water, waste tank gauges at navstation (white face-chromed ring) 2 x water/2 x fuel/3 x waste
- Fans - Hella Turbofans x 3 units - one for each cabin, mounted on ceiling
- Fans – Caframo fans x 3 units – one for each engine room, one for port forward deep storage locker

Plumbing

- Shore water connection on transom
- Quick 60L water heater
- Vessel water filter - a changeable 'water maker type filter' fitted on shore water connection in starboard engine room to filter city water
- Washer - drier 5 Kg wash and 3Kg dry - SMEG model no WDF147XS
- Dishwasher - stainless steel 45cm - SMEG LSA4845X
- Water maker - Dessalator - 12V/220V - 100 Ltr/hr control panel in cockpit table base with diverter
- valves
- Vetus electric toilets with fresh and salt water flushing
- ShureFlo seawater pump supplying 3 outlets - 1 x anchor locker - 1 x Stbd cockpit floor locker - 1

- x at galley sink and toilets (if required)
- Fresh water washdown in cockpit (with automatic hose reel) and in anchor locker (cold only)
- Freshwater manifold system allowing use of each tank and each pump separately and tanks fill
- from shore water connection
- Headhunter X-Caliber fresh water pressure pump (new December 2015) plus ShurFlo pump for
- backup
- General Ecology Seagull IV X-2KF Accuflow System drinking water filter for galley

Hull and Deck

- Stainless steel rope deflector in front of rudders
- Overhead cockpit LED strip lighting
- Davits on aft deck in stainless steel with winches, jammers
- Dinghy support on aft deck
- Trampolines - Dyneema with a rope border
- Teak bow seats
- Glass windscreen and sliding cloth bimini above helm chair
- Bimini sides and back
- Teak on cockpit floor, aft deck and transom steps
- Alarm system for vessel - wireless by Paradox with keypad (inside cbd), Inferno bar, 4 x wireless
- PIR's, 2 x remotes
- 2 x Lumishore multicolor LED underwater lights with control at nav station
- Main anchor - Ultra anchor - 45Kg 316 stainless steel with 75 meters of 10mm Aqua 7 (G7) chain
- by MAGGIE Italy plus 100 meters braided nylon anchor line
- Secondary anchor - Ultra anchor - 27Kg 316 stainless steel with 30 meters of 10mm Aqua 7 (G7)
- chain by MAGGIE Italy plus plus 50 meters braided nylon anchor line
- 2 x 13mm ultra flip swivel 316 SS UAUFS13
- Quickline 80m sinking flat rope with stainless reel mounted on transom
- Quickline 80m floating flat rope with stainless reel mounted on transom
- Ultra big trip hook UAUBTH
- Ultra 13mm chain grab UAUCGS
- 2 x handheld wired remotes for windlasses with chain counter Model CHC 1102M

Sails and Mast

- CruiseLam laminated sails by Quantum /Cape Town - 100 m² main. 90 m² reacher on

Stainless steel mast by Southern Spars / Cape Town • 100mm diam, 60m • 100mm dia furler, 42m² jib on 2nd furler

- Custom mast by Southern Spars / Cape Town
- Boom gantry system to lift dinghy
- Aqua Signal LED Tri-anchor/anchor/strobe light combination on mast top
- Hella foredeck floodlight, Hella side decks floodlights x 2

Safety & Fire Protection

- Category 1 offshore safety equipment by Viking • 8 man life raft (Viking Rescyou 8 UKL) (ISO) • FX55 Fortress anchor stowed in transom locker • 21' Fiorentino ParaAnchor and Large Fiorentino Shark Drogue with separate bridle and 300' of Dynema line for attachment of either device • Chafe protection by Fiorentino - 2 roderaps and 4 line raps • 8 inflatable fenders, 5 PVC fenders, various 18mm and 20 mm tie up ropes

Antifouling

- Underwater epoxy primer (3 layers)
- Coppercoat antifouling - 5 layers
- Sonihull ultrasonic antifouling - 2 x control units - 4 transducers mounted forward and aft in each hull

Interior

- Shade/mosquito screen on deck hatches (recessed in saloon, surface mount in hulls)
- Mosquito screens for all portholes
- Shades for hull windows (per shade) x 5 units, blackout roller blinds in aft cabins
- Oceanair saloon blinds - Texture silk (16% light) code 471-4583
- Ambient LED strip lighting in saloon ceiling and baseboards - warm white
- Courtesy lights in cockpit in both red and white
- Red courtesy lights throughout salon and hulls
- Saloon and hull settees in leather upholstery - Avocado Green
- 2 x Electronic safes
- Plastic "safe" in electrical locker

Aircon - Refrigeration Gas

- Air conditioners - Dometic Marine Air - 1 x 16000 and 2 x 12000 BTU units - 220V 50 HZ
- Dometic - 3 x Breathe Easy Air Purifiers, none for each A/C unit
- 2 drawer fridge in the galley - Vitrifigo DW210-2RF
- 2 drawer freezer in galley - Vitrifigo DW210-2BT

- Extra fridge in the galley - 115 LTR- Vitrifrigo C115iX
- Ice maker in cockpit - Vitrifrigo IM classic hydro
- Oven - SMEG 60cm Linea SC112PZ-8 (electric)
- Induction glass hob - SMEG Marc Newson SI321D
- Gas cooker - SMEG 4 burner PV640S
- Electronic gas shut off with galley sensor
- Composite gas bottles - 2 x 7.5Kg and 1 x 5Kg
- Sovereign BBQ with gas line supply on transom

Water Toys

- Dinghy - Walker Bay ST365 in Hypalon with console and seat
- Dinghy engine - 30HP Honda BF30 four stroke
- Hobby Mirage i12S inflatable kayak with Mirage Drive, paddle, upgraded fins and rudder, and sail
- kit
- Custom foldable storage for kayak on starboard railing
- Ocean Kayak Nalu 11 kayak/SUP with paddle
- Rotomolde kids kayak
- Mini boogie board with underwater viewport

Исключения

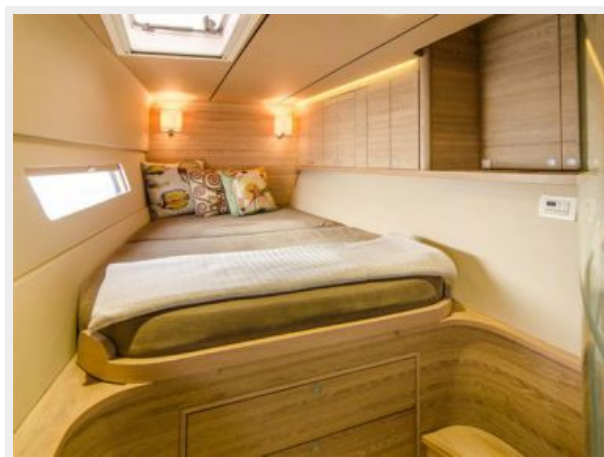
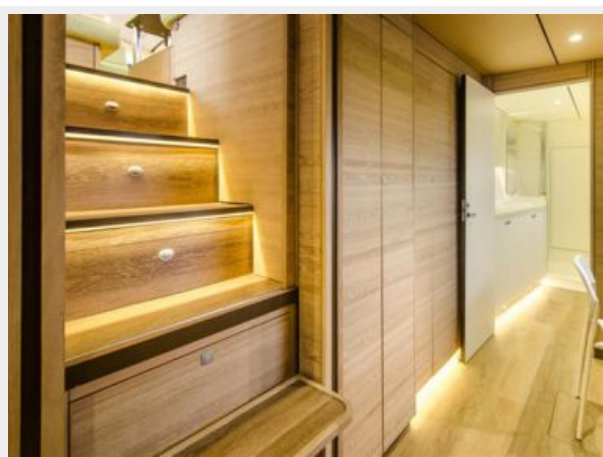
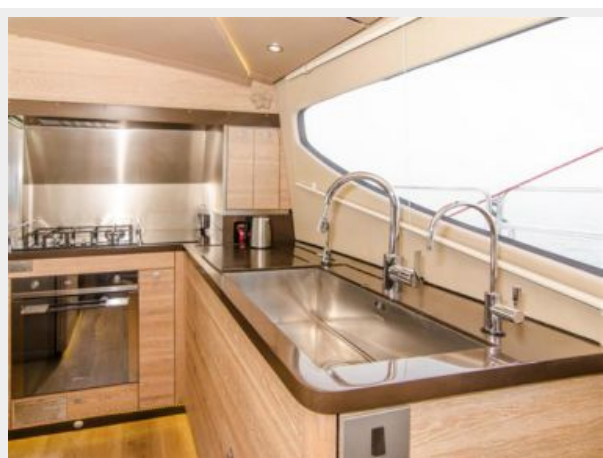
При продаже яхты исключаются личные вещи владельца.

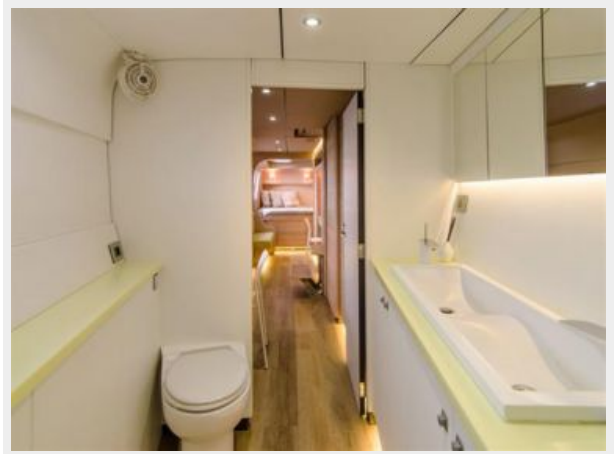
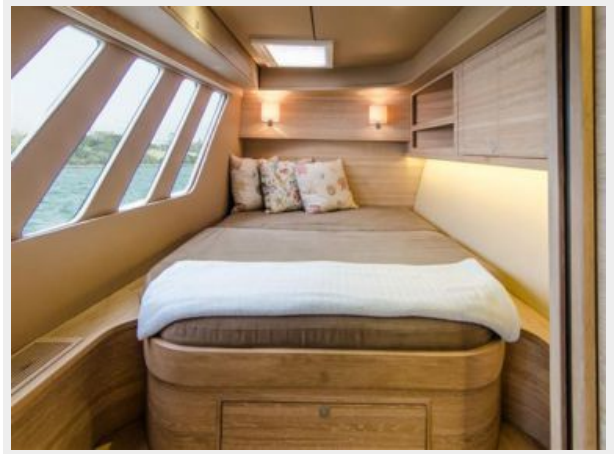
Отказ от ответственности

Компания предоставляет описание судна или яхты добросовестно, но не может гарантировать точность этой информации, а также не ручается за техническое состояние. Покупатель должен проинструктировать своих агентов или оценщиков исследовать представленную информацию более подробно, по собственному желанию. Продажа судна или яхты, изменение цены или снятие с продажи будет происходить без предварительного уведомления.

ФОТОГРАФИИ







КОНТАКТЫ

Андрей Шестаков (Andrey Shestakov) – ведущий яхтенный брокер отдела продаж яхт и судов компании Shestakov Yacht Sales Inc. Официальный представитель Shestakov Yacht Sales Inc. для русскоговорящих клиентов в центральном офисе компании в Майами/Форт Лодердейл/Флорида/США.

Контактная информация

Email: andrey@shestakovyachtsales.com

Web: shestakovyachtsales.com

Телефоны

Краснодарский край: **+7(918)465-66-44**

США, Майами, Флорида: **+1(954)274-4435**

Время работы

Понедельник – Суббота: **9:00 - 21:00**
EDT

Воскресенье: **Закрето**

Адрес



Harbour Towne Marina, 850 NE 3rd St,
STE 213, Dania, FL 33004