

N/A — ABSOLUTE



Builder: ABSOLUTE

Year Built: 2015

Model: Motor Yacht

Price: PRICE ON APPLICATION

Location: United States

LOA: 52' 6" (16.00m)

Beam: 14' 10" (4.52m)

Cruise Speed: 26 Kts. (30 MPH)

Max Speed: 35 Kts. (40 MPH)

Our experienced yacht broker, Andrey Shestakov, will help you choose and buy a yacht that best suits your needs n/a — **ABSOLUTE** from our catalogue. Presently, at Shestakov Yacht Sales Inc., we have a wide variety of yachts available on our sale's list. We also work in close contact with all the big yacht manufacturers from all over the world.

If you would like to buy a yacht n/a — **ABSOLUTE** or would like help answering any questions concerning purchasing, selling or chartering a yacht, please call +1(954)274-4435

TABLE OF CONTENTS

TABLE OF CONTENTS	2
SPECIFICATIONS	4
Overview	4
Basic Information	4
Dimensions	4
Speed, Capacities and Weight	4
Accommodations	5
Hull and Deck Information	5
Engine Information	5
DETAILED INFORMATION	6
Salon	6
Galley	6
Main Deck Dashboard	6
Lower Helm Station	7
Mid-Ship Master Cabin and Full Beam	7
Master Cabin Head	8
Bow VIP Cabin	8
Guest Starboard Stateroom	8
Cockpit	9
Guest Starboard Head	9
Flybridge	9
Flybridge Helm Station	10
Deck	10
Lower Deck	11
Bow	11
Technical Equipment	11
Equipment	12
Engine Room	12

Disclaimer	12
Exclusions	12
Disclaimer	12
PHOTOS	13
CONTACTS	24
Contact details	24
Telephones	24
Office hours	24
Address	24

SPECIFICATIONS

Overview

Key Features

- Largest flybridge in its class, with superb seating and lounging areas
- Exceptional lower accommodations with 3 staterooms
- Spacious cockpit aft, with convertible sun pad
- Access door from lower helm to starboard side deck
- Crew quarters aft
- KVH TracVision TV5 Sat TV
- New Samsung TV in salon, all staterooms, and cockpit
- Bluetooth speakers
- Raymarine hybrid touch electronic package
- Raymarine HD color radar
- Massive sunbed areas (flybridge, bow, and cockpit)
- Hydraulic swim platform
- Cockpit teak floor
- Opacmare passerelle

Basic Information

Category: Motor Yacht

Model Year: 2015

Year Built: 2015

Country: United States

Fly Bridge: Yes

Cockpit: Yes

Dimensions

LOA: 52' 6" (16.00m)

Beam: 14' 10" (4.52m)

Speed, Capacities and Weight

Cruise Speed: 26 Kts. (30 MPH)

Max Speed: 35 Kts. (40 MPH)

Accommodations

Total Cabins: 3

Total Heads: 3

Hull and Deck Information

Hull Material: Fiberglass

Engine Information

Engines: 2

Manufacturer: Volvo Penta

Model: D6 IPS-600

Engine Type: Inboard

Fuel Type: Diesel

DETAILED INFORMATION

Salon

- Salon is forward to galley area
- Canaletto walnut satin-finished furnishing
- U-shaped sofa in Grano leather color with Canaletto walnut extensible table, adjustable in height
- Little sofa made of Grano leather color opposite to sofa
- Electrical opening window
- Wide side mirrored glass windows
- Electric control panel with courtesy lights
- Sunshades for side windows with manual opening
- Wood flooring
- Salon mirrored glass access door with 4 sections, 2 of which are sliding
- Padded ceilings
- Courtesy lights
- Electric up-down Samsung TV with Samsung home theater speaker

Galley

- Galley is convenience located aft
- Sliding doors
- (2) Burners cooktop
- Stainless steel sink
- LG microwave
- Isotherm Fridge freezer
- Climma digital AC control
- Ample storage
- Overhead lights

- Mat Canaletto walnut kitchen with Corian countertop in marble shades
- Electrical household appliances: microwave/grill, pyroceram cook top and fridge column (capacity 217 L) with freezer (capacity 42 L)
- Fume extractor
- Dove color hanging cabinets, in high-gloss glossy varnish
- Ash color durmast oak wood floor

Main Deck Dashboard

- Dashboard made with dark brown leather inserts and panels with carbon finishings

- (1) GPS 12" display Raymarine
- Volvo 7" EVC panel
- Maneuvering joystick
- Electronic and adjustable steering
- Automatic pilot
- Bilge pumps activation alarms
- Water-in fuel alarms
- VHF with DSC (Europe) Raymarine with emergency supply
- Trim tabs control
- Winch control
- Compass
- Leather driver seat with armrests and reclining backrest

Lower Helm Station

- (2) Dual Raymarine hybrid touch display
- Raymarine HD color radar
- Volvo 7" EVC Panel
- Volvo Penta joystick
- Electronic and adjustable steering
- Raymarine autopilot
- Raymarine VHF
- Bennett trim tabs control
- Jabsco search light control
- Ritchie compass

Mid-Ship Master Cabin and Full Beam

- Mat Canaletto walnut wood furnishing
- Longitudinal double bed
- Headboard in tinted dark brown precious essence with graining in relief
- Dove grey glossy varnished bed finishing
- Canaletto walnut piece of furniture with 3 doors
- Vanity with mirror
- Leather sofa in Grano color
- Walk-in wardrobe with lighting, drawers and shelves
- Wide windows and (2) opening portholes
- Manual curtains
- Courtesy lights
- Padded ceilings
- Cream color carpet floor
- Samsung flatscreen TV

- Climma digital AC control display

Master Cabin Head

- Varnished cabinet with canaletto walnut doors
- Mirror with lighting
- Corian countertop with marbled shades and ceramic sink
- Wide shower with glass door, seat and hand spray
- Electrical toilet with fresh water
- (1) Opening porthole
- HPL floor

Bow VIP Cabin

- Mat Canaletto walnut wood furnishing
- Double bed with chest of drawers
- Headboard in tinted dark brown precious essence with graining in relief
- Dove color high glossy varnished bed finishing
- (2) Wardrobes made of mat Canaletto walnut wood with mirror door
- Wide windows with (2) opening portholes
- Hatch with ladder for emergency exit
- Courtesy lights
- Padded ceilings
- Cream color carpet floor
- Samsung flatscreen TV
- Hanging closet
- Ipod connection
- Climma digital AC control display
- Private entry to head and shower

Guest Starboard Stateroom

- Mat Canaletto walnut wood furnishing
- (2) Single beds with storage compartments
- Headboard in tinted dark brown precious essence with graining in relief
- Bedside table made of Canaletto walnut
- Dove high-glossy varnished bed finishing
- Wardrobe made of mat Canaletto walnut with mirror door
- (2) Opening portholes
- Courtesy lights
- Padded ceilings

- Cream carpet floor
- Samsung TV
- Climma digital AC control display

Cockpit

- Sofa with backrests in cappuccino color and sitting area in cream color
- Wide cream color sunbathing cushion with cappuccino color sliding backrests
- Stainless steel side handrails for the sunbathing
- Loudspeakers with system connected to the radio in the flybridge
- Compartments for mooring lines
- Housing for fenders
- Teak floor and steps
- Cockpit access door
- Stern mooring chocks
- Platform with non-skid floor
- Shower with hot and cold water mixer
- Direct water connection to the shore line
- Shore power connectors with protective cap
- Samsung TV
- Isotherm Icemaker
- Fusion MS-NRX200i AM/FM
- Engine room access
- Fly bridge ladder steps with teak steps and stainless steel handrail
- Overhead speakers
- OPACMARE passerelle

Guest Starboard Head

- Varnished cabinet with Canaletto walnut doors
- Corian countertop with marbled shades and ceramic sink
- Mirror with lighting
- Shower with glass door and swiveling hand spray
- Electrical toilet with fresh water
- Opening porthole
- (2) Access doors from the access room and from the bow cabin
- HPL floor

Flybridge

- Plexiglass windscreen with top structure and handrail made of stainless steel

- Wide sunbathing cushions with cream color reclining backrests
- Driver side seat sofa
- U-sofa with backrests in "Cappuccino" color and seats in Cream color
- Teak table with double stainless steel legs
- Cabinet with cover, sink, fridge and storage compartment
- Non-skid deck on a single level
- Shaped and raised radar arch for aerials
- Stair with large teak steps, fiberglass structure with peak and stainless steel handrail
- Fly access hatchway railing
- Isotherm fridge
- Speakers
- Tracvision TV5 SAT TV
- Bimini Top

Flybridge Helm Station

- (1) Raymarine Hybrid touch GPS 12" display
- Ipod connection
- Maneuvering joystick
- Electronic and adjustable steering
- Automatic pilot
- Bilge pumps activation alarms
- Water-in-fuel alarms
- VHF with DSC (Europe) Raymarine with emergency power supply
- Trim tabs (Bennett) control with position indicator
- Winch control
- Radio with MP3 player and USB port, dockstation for iPod/iPhone through water-proof connection, video player from iPod on GPS/Plotter (Europe)
- Ergonomic dashboard with anti-glare viewing angle
- Loudspeakers
- Adjustable bucket captain seat
- Dashboard cover
- Glass holders and glove compartment
- Fusion MS-RA205
- Glass holder
- Raymarine HD color radar

Deck

- Stainless steel railing
- PVC and stainless steel high-impact rubrail
- Bow propeller protection cover

- Stainless steel deck hardware
- Safety handrails on the deckhouse
- Pair of mooring cleats at the stern, bow and spring in the middle length
- Protective raised gunwale
- Non-skid tread surface
- White deck and superstructure
- Screens for front and side windows
- Windscreen wiper with washer
- White hull shaped with high impact resistance crystal windows
- Diesel inlets on both boat's sides, with protective caps and drops trapping

Lower Deck

- Fiberglass and stainless steel stair with handrails and comfortable steps
- Access room with cream color carpet floor

Bow

- Wide area in the bow for mooring
- Anchor winch with 21 kg zinc-plated anchor and 40 m chain
- Winch local control with chain counter
- Bow roller of the anchor in stainless steel
- Self-draining anchor chain locker with hatch for inspection
- Stainless steel protections for the mooring lines at bow
- Housing for sunbathing cushions

Technical Equipment

- Generator 3.5 kw 230V 50 Hz with fume and water separator
- LED lights for the interiors and cockpit
- Powder fire-fighting system
- (2) fuel tanks connected together with double fuel filler for high pressure fueling
- Fuel pre-filters with water presence sensor and acoustic signal on dashboard
- Use of fire resistant materials for sea water piping
- Portable electric pump for fluid suction
- Domestic hot and cold water double distribution system, with individual centralized shut-off valves
- Boiler
- Automatic chargers dedicated to service batteries, engines and generator
- Hydraulic trim tabs
- black water tank

- Air intakes in the engine room with grilles separating air/water
- Fire-retardant and soundproofing covering for engines room
- Easy inspection integrated deck and hull structure
- Sacrificial anodes for salty water

Equipment

- (1) Lifebuoy in casing
- (1) Boat hook
- (6) Fenders with customized covers

Engine Room

- Twin Volvo Penta IPS-600 year 2014 with 200 hours
- Kohler generator 20 kw with 313 hours
- Waeco sinepower MSI1824T
- Waeco perfect power DCDC40
- Master volt battery charger 24/20-3, 24/30-3
- Water heater
- Fire extinguisher
- FIAMM Titanium batteries

Disclaimer

The Company offers the details of this vessel in good faith but cannot guarantee or warrant the accuracy of this information nor warrant the condition of the vessel. A buyer should instruct his agents, or his surveyors, to investigate such details as the buyer desires validated. This vessel is offered subject to prior sale, price change, or withdrawal without notice.

Exclusions

Owner's personal belongings.

Disclaimer

The Company offers the details of this vessel or yacht in good faith but cannot guarantee or warrant the accuracy of this information nor warrant the condition of the vessel. A buyer should instruct his representatives, agents, or his surveyors, to investigate such details as the buyer desires validated. This vessel or yacht is offered subject to prior sale, price change, or withdrawal without notice.

PHOTOS



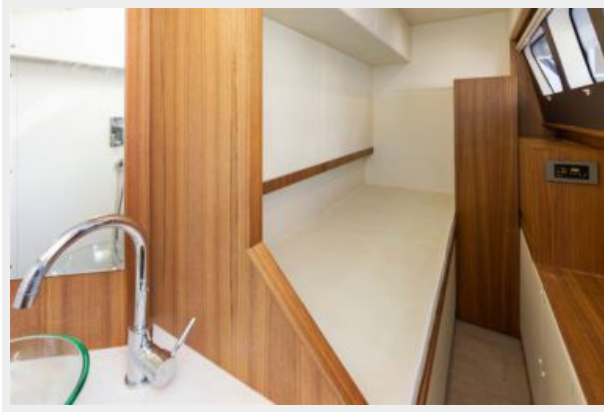




















CONTACTS

Andrey Shestakov, leading yacht broker of the sales department of Shestakov Yacht Sales Inc. Shestakov Yacht Sales Inc., the official representative of the Miami/Fort Lauderdale FL headquarters.

Contact details

Email: andrey@shestakovyachtsales.com

Web: shestakovyachtsales.com/en/

Telephones

USA: +1(954)274-4435

Office hours

Monday – Saturday: **9:00 - 21:00** EDT

Sunday: **closed**

Address



Harbour Towne Marina, 850 NE 3rd St,
STE 213, Dania, FL 33004