

## N/A — ABSOLUTE



**Судостроитель:** ABSOLUTE

**Год постройки:** 2015

**Модель:** Моторная яхта

**Цена:** ЦЕНА ЯХТЫ ПО ЗАПРОСУ

**Местонахождение:** United States

**Длина общая:** 52' 6" (16.00m)

**Ширина:** 14' 10" (4.52m)

**Крейс. скорость:** 26 Kts. (30 MPH)

**Макс. скорость:** 35 Kts. (40 MPH)

Купить n/a — **ABSOLUTE** а также выбрать подходящую вам яхту из нашего каталога яхт вам поможет опытный яхтенный брокер Андрей Шестаков. На сегодняшний день компания **Shestakov Yacht Sales Inc.** имеет большое количество яхт в собственном списке продаж, а также тесно сотрудничает со всеми крупными яхтенными производителями по всему миру.

Для того чтобы купить яхту n/a — **ABSOLUTE** а также проконсультироваться по любому вопросу связанному с покупкой, продажей, чартером яхт позвоните по телефону **+7(918)465-66-44**.

# ОГЛАВЛЕНИЕ

---

ОГЛАВЛЕНИЕ	2
ХАРАКТЕРИСТИКИ	4
Обзор	4
Основная информация	4
Размеры	4
Скорость, вместимость и масса	4
Размещение	5
Корпус и палуба	5
Информация о двигателе	5
ПОДРОБНОЕ ОПИСАНИЕ	6
Salon	6
Galley	6
Main Deck Dashboard	6
Lower Helm Station	7
Mid-Ship Master Cabin and Full Beam	7
Master Cabin Head	8
Bow VIP Cabin	8
Guest Starboard Stateroom	8
Cockpit	9
Guest Starboard Head	9
Flybridge	9
Flybridge Helm Station	10
Deck	10
Lower Deck	11
Bow	11
Technical Equipment	11
Equipment	12
Engine Room	12

---

Disclaimer	12
Исключения	12
Отказ от ответственности	12
ФОТОГРАФИИ	14
КОНТАКТЫ	25
Контактная информация	25
Телефоны	25
Время работы	25
Адрес	25

# ХАРАКТЕРИСТИКИ

## Обзор

### Key Features

- Largest flybridge in its class, with superb seating and lounging areas
- Exceptional lower accommodations with 3 staterooms
- Spacious cockpit aft, with convertible sun pad
- Access door from lower helm to starboard side deck
- Crew quarters aft
- KVH TracVision TV5 Sat TV
- New Samsung TV in salon, all staterooms, and cockpit
- Bluetooth speakers
- Raymarine hybrid touch electronic package
- Raymarine HD color radar
- Massive sunbed areas (flybridge, bow, and cockpit)
- Hydraulic swim platform
- Cockpit teak floor
- Opacmare passerelle

## Основная информация

Тип судна: Моторная яхта

Модельный год: 2015

Год постройки: 2015

Страна: United States

Открытая палуба мостика: Да

Кубрик: Да

## Размеры

Длина общая: 52' 6" (16.00m)

Ширина: 14' 10" (4.52m)

## Скорость, вместимость и масса

Крейс. скорость: 26 Kts. (30 MPH)

Макс. скорость: 35 Kts. (40 MPH)

---

## Размещение

---

**Всего кают:** 3

**Всего ком. состава:** 3

---

## Корпус и палуба

---

**Материал корпуса:** Fiberglass

---

## Информация о двигателе

---

**Двигатели:** 2

**Производитель:** Volvo Penta

**Модель:** D6 IPS-600

**Тип двигателя:** Inboard

**Тип топлива:** Diesel

---

# ПОДРОБНОЕ ОПИСАНИЕ

---

## Salon

---

- Salon is forward to galley area
- Canaletto walnut satin-finished furnishing
- U-shaped sofa in Grano leather color with Canaletto walnut extensible table, adjustable in height
- Little sofa made of Grano leather color opposite to sofa
- Electrical opening window
- Wide side mirrored glass windows
- Electric control panel with courtesy lights
- Sunshades for side windows with manual opening
- Wood flooring
- Salon mirrored glass access door with 4 sections, 2 of which are sliding
- Padded ceilings
- Courtesy lights
- Electric up-down Samsung TV with Samsung home theater speaker

## Galley

---

- Galley is convenience located aft
- Sliding doors
- (2) Burners cooktop
- Stainless steel sink
- LG microwave
- Isotherm Fridge freezer
- Climma digital AC control
- Ample storage
- Overhead lights
  
- Mat Canaletto walnut kitchen with Corian countertop in marble shades
- Electrical household appliances: microwave/grill, pyroceram cook top and fridge column (capacity 217 L) with freezer (capacity 42 L)
- Fume extractor
- Dove color hanging cabinets, in high-gloss glossy varnish
- Ash color durmast oak wood floor

## Main Deck Dashboard

---

- Dashboard made with dark brown leather inserts and panels with carbon finishings

- (1) GPS 12" display Raymarine
- Volvo 7" EVC panel
- Maneuvering joystick
- Electronic and adjustable steering
- Automatic pilot
- Bilge pumps activation alarms
- Water-in fuel alarms
- VHF with DSC (Europe) Raymarine with emergency supply
- Trim tabs control
- Winch control
- Compass
- Leather driver seat with armrests and reclining backrest

---

## Lower Helm Station

---

- (2) Dual Raymarine hybrid touch display
- Raymarine HD color radar
- Volvo 7" EVC Panel
- Volvo Penta joystick
- Electronic and adjustable steering
- Raymarine autopilot
- Raymarine VHF
- Bennett trim tabs control
- Jabsco search light control
- Ritchie compass

---

## Mid-Ship Master Cabin and Full Beam

---

- Mat Canaletto walnut wood furnishing
- Longitudinal double bed
- Headboard in tinted dark brown precious essence with graining in relief
- Dove grey glossy varnished bed finishing
- Canaletto walnut piece of furniture with 3 doors
- Vanity with mirror
- Leather sofa in Grano color
- Walk-in wardrobe with lighting, drawers and shelves
- Wide windows and (2) opening portholes
- Manual curtains
- Courtesy lights
- Padded ceilings
- Cream color carpet floor
- Samsung flatscreen TV

- Climma digital AC control display

---

## Master Cabin Head

---

- Varnished cabinet with canaletto walnut doors
- Mirror with lighting
- Corian countertop with marbled shades and ceramic sink
- Wide shower with glass door, seat and hand spray
- Electrical toilet with fresh water
- (1) Opening porthole
- HPL floor

---

## Bow VIP Cabin

---

- Mat Canaletto walnut wood furnishing
- Double bed with chest of drawers
- Headboard in tinted dark brown precious essence with graining in relief
- Dove color high glossy varnished bed finishing
- (2) Wardrobes made of mat Canaletto walnut wood with mirror door
- Wide windows with (2) opening portholes
- Hatch with ladder for emergency exit
- Courtesy lights
- Padded ceilings
- Cream color carpet floor
- Samsung flatscreen TV
- Hanging closet
- Ipod connection
- Climma digital AC control display
- Private entry to head and shower

---

## Guest Starboard Stateroom

---

- Mat Canaletto walnut wood furnishing
- (2) Single beds with storage compartments
- Headboard in tinted dark brown precious essence with graining in relief
- Bedside table made of Canaletto walnut
- Dove high-glossy varnished bed finishing
- Wardrobe made of mat Canaletto walnut with mirror door
- (2) Opening portholes
- Courtesy lights
- Padded ceilings



- Cream carpet floor
- Samsung TV
- Climma digital AC control display

## Cockpit

---

- Sofa with backrests in cappuccino color and sitting area in cream color
- Wide cream color sunbathing cushion with cappuccino color sliding backrests
- Stainless steel side handrails for the sunbathing
- Loudspeakers with system connected to the radio in the flybridge
- Compartments for mooring lines
- Housing for fenders
- Teak floor and steps
- Cockpit access door
- Stern mooring chocks
- Platform with non-skid floor
- Shower with hot and cold water mixer
- Direct water connection to the shore line
- Shore power connectors with protective cap
- Samsung TV
- Isotherm Icemaker
- Fusion MS-NRX200i AM/FM
- Engine room access
- Fly bridge ladder steps with teak steps and stainless steel handrail
- Overhead speakers
- OPACMARE passerelle

## Guest Starboard Head

---

- Varnished cabinet with Canaletto walnut doors
- Corian countertop with marbled shades and ceramic sink
- Mirror with lighting
- Shower with glass door and swiveling hand spray
- Electrical toilet with fresh water
- Opening porthole
- (2) Access doors from the access room and from the bow cabin
- HPL floor

## Flybridge

---

- Plexiglass windscreen with top structure and handrail made of stainless steel

- Wide sunbathing cushions with cream color reclining backrests
- Driver side seat sofa
- U-sofa with backrests in "Cappuccino" color and seats in Cream color
- Teak table with double stainless steel legs
- Cabinet with cover, sink, fridge and storage compartment
- Non-skid deck on a single level
- Shaped and raised radar arch for aerials
- Stair with large teak steps, fiberglass structure with peak and stainless steel handrail
- Fly access hatchway railing
- Isotherm fridge
- Speakers
- Tracvision TV5 SAT TV
- Bimini Top

---

## Flybridge Helm Station

---

- (1) Raymarine Hybrid touch GPS 12" display
- Ipod connection
- Maneuvering joystick
- Electronic and adjustable steering
- Automatic pilot
- Bilge pumps activation alarms
- Water-in-fuel alarms
- VHF with DSC (Europe) Raymarine with emergency power supply
- Trim tabs (Bennett) control with position indicator
- Winch control
- Radio with MP3 player and USB port, dockstation for iPod/iPhone through water-proof connection, video player from iPod on GPS/Plotter (Europe)
- Ergonomic dashboard with anti-glare viewing angle
- Loudspeakers
- Adjustable bucket captain seat
- Dashboard cover
- Glass holders and glove compartment
- Fusion MS-RA205
- Glass holder
- Raymarine HD color radar

---

## Deck

---

- Stainless steel railing
- PVC and stainless steel high-impact rubrail
- Bow propeller protection cover

- Stainless steel deck hardware
- Safety handrails on the deckhouse
- Pair of mooring cleats at the stern, bow and spring in the middle length
- Protective raised gunwale
- Non-skid tread surface
- White deck and superstructure
- Screens for front and side windows
- Windscreen wiper with washer
- White hull shaped with high impact resistance crystal windows
- Diesel inlets on both boat's sides, with protective caps and drops trapping

---

## Lower Deck

---

- Fiberglass and stainless steel stair with handrails and comfortable steps
- Access room with cream color carpet floor

---

## Bow

---

- Wide area in the bow for mooring
- Anchor winch with 21 kg zinc-plated anchor and 40 m chain
- Winch local control with chain counter
- Bow roller of the anchor in stainless steel
- Self-draining anchor chain locker with hatch for inspection
- Stainless steel protections for the mooring lines at bow
- Housing for sunbathing cushions

---

## Technical Equipment

---

- Generator 3.5 kw 230V 50 Hz with fume and water separator
- LED lights for the interiors and cockpit
- Powder fire-fighting system
- (2) fuel tanks connected together with double fuel filler for high pressure fueling
- Fuel pre-filters with water presence sensor and acoustic signal on dashboard
- Use of fire resistant materials for sea water piping
- Portable electric pump for fluid suction
- Domestic hot and cold water double distribution system, with individual centralized shut-off valves
- Boiler
- Automatic chargers dedicated to service batteries, engines and generator
- Hydraulic trim tabs
- black water tank

- Air intakes in the engine room with grilles separating air/water
- Fire-retardant and soundproofing covering for engines room
- Easy inspection integrated deck and hull structure
- Sacrificial anodes for salty water

## Equipment

---

- (1) Lifebuoy in casing
- (1) Boat hook
- (6) Fenders with customized covers

## Engine Room

---

- Twin Volvo Penta IPS-600 year 2014 with 200 hours
- Kohler generator 20 kw with 313 hours
- Waeco sinepower MSI1824T
- Waeco perfect power DCDC40
- Master volt battery charger 24/20-3, 24/30-3
- Water heater
- Fire extinguisher
- FIAMM Titanium batteries

## Disclaimer

---

The Company offers the details of this vessel in good faith but cannot guarantee or warrant the accuracy of this information nor warrant the condition of the vessel. A buyer should instruct his agents, or his surveyors, to investigate such details as the buyer desires validated. This vessel is offered subject to prior sale, price change, or withdrawal without notice.

## Исключения

---

При продаже яхты исключаются личные вещи владельца.

## Отказ от ответственности

---

Компания предоставляет описание судна или яхты добросовестно, но не может гарантировать точность этой информации, а также не ручается за техническое состояние. Покупатель должен проинструктировать своих агентов или оценщиков исследовать представленную информацию более подробно, по собственному желанию. Продажа судна или яхты, изменение цены или снятие с продажи будет происходить без

предварительного уведомления.

# ФОТОГРАФИИ



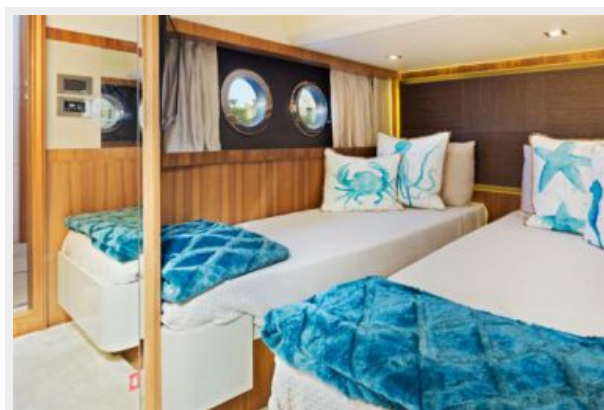


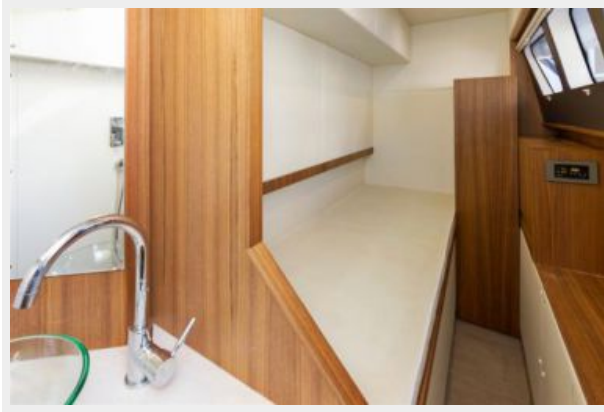






















# КОНТАКТЫ

---

Андрей Шестаков (Andrey Shestakov) – ведущий яхтенный брокер отдела продаж яхт и судов компании Shestakov Yacht Sales Inc. Официальный представитель Shestakov Yacht Sales Inc. для русскоговорящих клиентов в центральном офисе компании в Майами/Форт Лодердейл/Флорида/США.

## Контактная информация

---

Email: **andrey@shestakovyachtsales.com**

Web: [shestakovyachtsales.com](http://shestakovyachtsales.com)

## Телефоны

---

Краснодарский край: **+7(918)465-66-44**

США, Майами, Флорида: **+1(954)274-4435**

## Время работы

---

Понедельник – Суббота: **9:00 - 21:00**  
EDT

Воскресенье: **Закрыто**

## Адрес

---



Harbour Towne Marina, 850 NE 3rd St,  
STE 213, Dania, FL 33004