

NO NAME — AZIMUT



Builder: AZIMUT

Year Built: 2013

Model: Motor Yacht

Price: PRICE ON APPLICATION

Location: United States

LOA: 40' 0" (12.19m)

Beam: 12' 8" (3.86m)

Max Draft: 3' 9" (1.14m)

Our experienced yacht broker, Andrey Shestakov, will help you choose and buy a yacht that best suits your needs **No Name — AZIMUT** from our catalogue. Presently, at Shestakov Yacht Sales Inc., we have a wide variety of yachts available on our sale's list. We also work in close contact with all the big yacht manufacturers from all over the world.

If you would like to buy a yacht **No Name — AZIMUT** or would like help answering any questions concerning purchasing, selling or chartering a yacht, please call **+1(954)274-4435**

TABLE OF CONTENTS

TABLE OF CONTENTS	2
SPECIFICATIONS	4
Overview	4
Basic Information	4
Dimensions	4
Speed, Capacities and Weight	4
Accommodations	4
Hull and Deck Information	5
Engine Information	5
DETAILED INFORMATION	6
Upgrades	6
Engine Room	6
Vessel Walk-through	6
Galley	7
Electrical Equipment	7
Lower Helm	7
Upper Helm	8
Entertainment Equipment	8
Hull and Deck Equipment	8
Mechanical Equipment	9
Exclusions	9
Exclusions	9
Disclaimer	9
PHOTOS	11
CONTACTS	17
Contact details	17
Telephones	17
Office hours	17

Address

17

SPECIFICATIONS

Overview

Entering the salon from the cockpit there is a large leather sofa which converts to a sofa bed and a hi-lo dining table. To port is the entertainment center with TV and storage. The galley is equipped with refrigerator/freezer, microwave, stove, sink and storage. Forward is the cabin area and guest stateroom. It features two lower berths, closet, drawers and TV. It also has private access to the guest head. The guest head is forward with shower, toilet, sink and storage and is also accessible from the companionway. Forward is the master stateroom with centerline queen bed, Samsung TV, closet, storage and ensuite head.

She has a Opacmare hydraulic swim platform with ladder and large foredeck sunpads for relaxing and sunbathing.

Basic Information

Category: Motor Yacht

Model Year: 2013

Year Built: 2013

Country: United States

Dimensions

LOA: 40' 0" (12.19m)

Beam: 12' 8" (3.86m)

Max Draft: 3' 9" (1.14m)

Speed, Capacities and Weight

Displacement: 30000 Pounds

Water Capacity: 130 Gallons

Fuel Capacity: 290 Gallons

Accommodations

Total Cabins: 2

Total Heads: 2

Hull and Deck Information

Hull Material: Fiberglass

Engine Information

Engines: 2

Manufacturer: Cummins

Model: QSB 5.9

Engine Type: Inboard

Fuel Type: Diesel

DETAILED INFORMATION

Upgrades

- Solar tinting of windows
- Portholes resealed
- New quilted bedding, sheets, pillows, and bath towels
- Service for 4 in galley
- Bartop coated flybridge table
- Updated upholstery, canvas, and sunpad cover
- Underwater lighting
- Bose surround sound, interior speakers, rear deck speakers, and flybridge speakers
- New bottom paint May 2017
- Both porps rebalanced, new bottom zincs May 2017
- New 50 AMP power cord
- Hunter Douglas custom shades
- New carpet padding throughout
- New 4" master bedding memory foam topper

Engine Room

- Engine oil change July 2017
- Generator and transmissions oil changed
- Fuel filters, all zinc replaced, seawater pump impellers, generator and both engines
- Complete heat exchange service July 2017, engines and generator
- New service battery Aug 2017
- New generator battery charger
- (2) New 3 pole electric contractors for shore and genset power
- All AC heat exchangers acid cleaned
- All new strainers, orings, gaskets and visual site glass replaced

Vessel Walk-through

Entering the salon from the cockpit there is a large leather sofa to starboard which converts to a sofa bed and a hi-lo dining table. To port is the entertainment center with TV and storage. Forward and up two steps to starboard is the lower helm station with double helm bench seat. To starboard and down three steps is the galley with refrigerator/freezer, microwave, stove, sink and storage.

Forward and down one step is the cabin area with the guest stateroom to starboard. It features two lower berths, closet, drawers and TV. It also has private access to the guest head. The guest

head is forward with shower, toilet, sink and storage and is also accessible from the companionway and doubles as the day head.

Forward is the master stateroom with centerline queen bed, Samsung TV, closet, storage and ensuite head.

The galley floor is natural wood and the head floors are teak. The cabin and salon floors are carpeted with protective runners.

The flybridge is accessed via a ladder from the cockpit to port. The helm is forward and to port. To starboard is lounge seating running the entire length of the flybridge aft. There is also a small refrigerator and a folding teak table. The flybridge is protected by a canvas Bimini top.

Galley

- Isotherm refrigerator/freezer
- Kenyon two burner glasstop stove
- G E microwave oven
- Single stainless steel sink with faucet
- Pressure fresh water system
- Isotherm refrigerator (Flybridge)
- Isotemp hot water heater

Electrical Equipment

- Onan 7 kW generator model 7MDKBL in sound box 255 HOURS
- 24 volt DC systems
- 110 volt / 230 volt AC systems
- Generator battery charger
- Main battery charger
- Battery parallel switch
- Battery isolator switches
- Cockpit 110volt / 230 volt breakers
- 50 AMP shore cord

Lower Helm

- Raymarine hybrid touch color GPS/ plotter / 48 mile radar/ Fishfinder
- Raymarine ST6002 autopilot
- Raymarine Ray 240 VHF radio with remote speaker
- Ritchie compass
- Xenta Systems joystick control

Upper Helm

- Raymarine hybrid touch color GPS plotter/ 48 mile radar/ Fishfinder
- Xenta joystick control
- Raymarine autopilot
- Raymarine VHF radio

Entertainment Equipment

- Intellian satellite TV antenna with control panel
- Two Direct TV HD receivers (Salon and Master)
- Samsung LCD TV (Salon and Guest)
- Samsung Blue Ray Player (Salon and Master)
- Fusion MS-IP700 stereo with cockpit and flybridge remote
- JL Audio speakers – Cockpit / Salon / Flybridge
- Samsung LCD TV (Master)

Hull and Deck Equipment

- Opacmare hydraulic swim platform with ladder
- Bow and side rails
- Navigation and anchor lights
- Windshield wipers and washers
- Cockpit courtesy lights
- Teak cockpit decks
- Portside cockpit access gate
- Cockpit fresh water shower
- Bimini top
- Canvas covers for Flybridge seating and helm station
- Flybridge sliding helm chair
- Marco single trumpet air horn
- Quick windlass with chain rode and hand held controls
- Foredeck sun pads
- Bow rail fender racks port and starboard – 4 fenders
- Galvanized anchor in stainless steel chute

- Teak flybridge table
- Mesh windshield cover
- Sliding aft salon door
- Carpet runners
- Flybridge radar arch
- Aft cockpit seat with storage beneath
- Spare Fortress anchor and line

Mechanical Equipment

- Webasto Marine reverse cycle air conditioning
- Cummins 355 hp QSB-5.9 engines
- V-Drive transmissions
- Bow thruster
- Prop pockets
- Two automatic bilge pumps
- Xenta Systems joystick control
- Cummins electronic single lever controls
- Cummins Mercruiser Smartcraft engine display
- BSCO Marine fire suppression system
- Ship alarm panel
- Emergency manual bilge pump
- JABSCO remote controlled spotlight
- Emergency engine stops
- Bennett trim tabs with auto tab control and position indicators
- Tecma toilets
- Smartcraft digital analog engine gauges (Flybridge)
- Engine room ventilation fan
- Single Racor fuel filters
- Sea strainers and sea cocks

Exclusions

- Owner's personal effects are excluded from the sale

Exclusions

Owner's personal belongings.

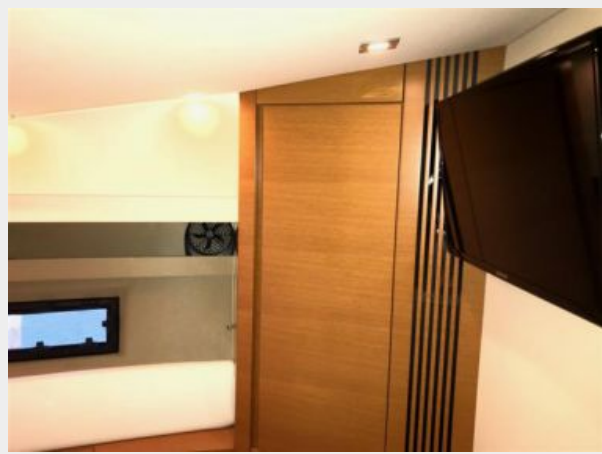
Disclaimer

The Company offers the details of this vessel or yacht in good faith but cannot guarantee or warrant the accuracy of this information nor warrant the condition of the vessel. A buyer should instruct his representatives, agents, or his surveyors, to investigate such details as the buyer desires validated. This vessel or yacht is offered subject to prior sale, price change, or withdrawal without notice.

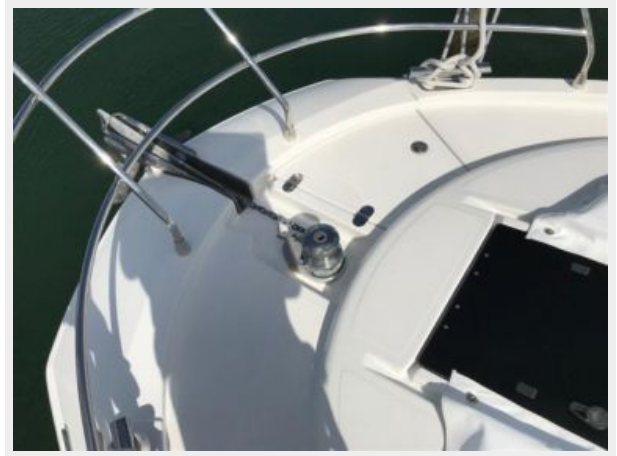
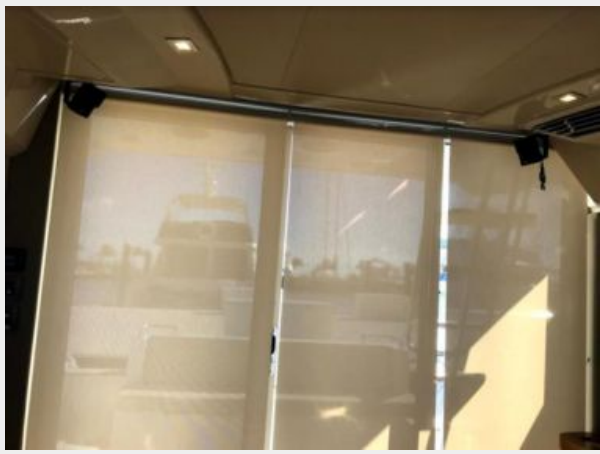
PHOTOS

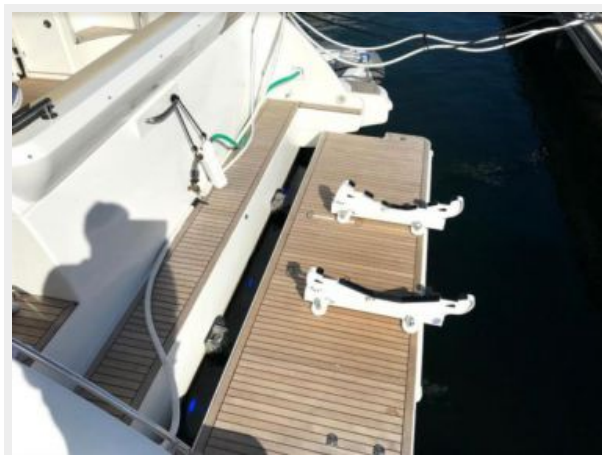
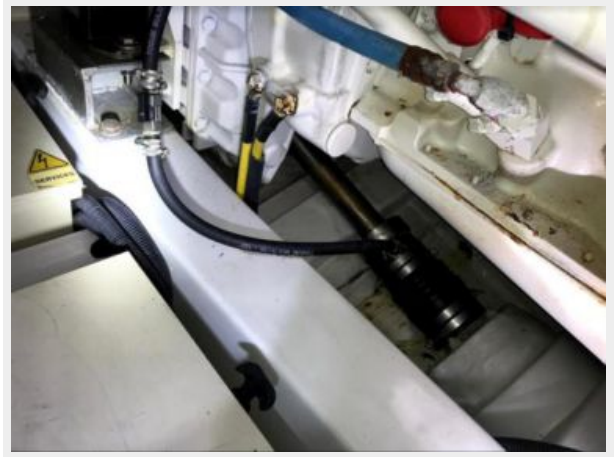
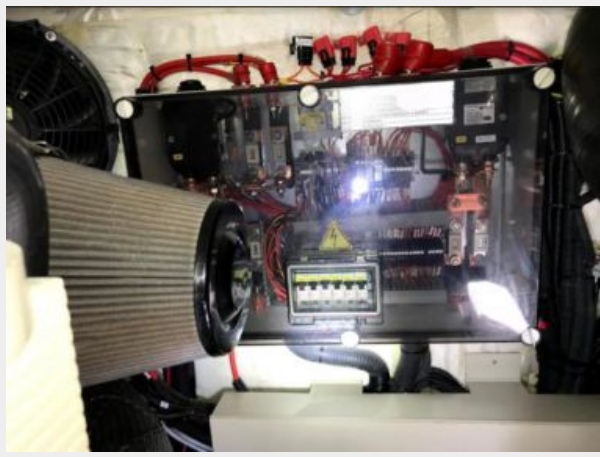












CONTACTS

Andrey Shestakov, leading yacht broker of the sales department of Shestakov Yacht Sales Inc. Shestakov Yacht Sales Inc., the official representative of the Miami/Fort Lauderdale FL headquarters.

Contact details

Email: andrey@shestakovyachtsales.com

Web: shestakovyachtsales.com/en/

Telephones

USA: +1(954)274-4435

Office hours

Monday – Saturday: **9:00 - 21:00** EDT

Sunday: **closed**

Address



Harbour Towne Marina, 850 NE 3rd St,
STE 213, Dania, FL 33004