

## HONU — BENETEAU



**Builder:** BENETEAU

**Year Built:** 1997

**Model:** Cruising Sailboat

**Price:** PRICE ON APPLICATION

**Location:** United States

**LOA:** 32' 0" (9.75m)

**Beam:** 11' 3" (3.43m)

**Min Draft:** 4' 3" (1.30m)

Our experienced yacht broker, Andrey Shestakov, will help you choose and buy a yacht that best suits your needs **HONU — BENETEAU** from our catalogue. Presently, at Shestakov Yacht Sales Inc., we have a wide variety of yachts available on our sale's list. We also work in close contact with all the big yacht manufacturers from all over the world.

If you would like to buy a yacht **HONU — BENETEAU** or would like help answering any questions concerning purchasing, selling or chartering a yacht, please call **+1(954)274-4435**

---

# TABLE OF CONTENTS

---

TABLE OF CONTENTS	2
SPECIFICATIONS	4
Overview	4
Basic Information	4
Dimensions	4
Speed, Capacities and Weight	4
Accommodations	4
Hull and Deck Information	5
Engine Information	5
DETAILED INFORMATION	6
Walkthru	6
Accommodations	6
Galley	6
Additional Units Included	6
Electronics	6
Electrical	6
Deck and Hull	7
Sails and Rigging	7
Head	7
Dingy and Spares	7
Engine	7
Exclusions	7
Disclaimer	7
PHOTOS	8
CONTACTS	15
Contact details	15
Telephones	15
Office hours	15

---

Address

15

---

# SPECIFICATIONS

---

## Overview

---

HONU is a Meticulous maintained Beneteau 321 that is set up for living aboard and/or cruising. She has several custom upgrades that give her advantages over standard 321's. The cockpit has a SS custom rail across the stern that gives you additional seating and safety. The aft master has custom cabinetry across the Stb side giving you additional drawers and storage. The V-berth has been converted to a hanging locker and extra storage. The owners have her maintenance up to date and has excellent service records. She also has a west Marine dingy/motor and paddle board included with the vessel.

## Basic Information

---

**Category:** Cruising Sailboat

**Model Year:** 1997

**Year Built:** 1997

**Country:** United States

## Dimensions

---

**LOA:** 32' 0" (9.75m)

**LWL:** 29' 5" (8.97m)

**Beam:** 11' 3" (3.43m)

**Min Draft:** 4' 3" (1.30m)

**Clearance:** 46' 3" (14.10m)

## Speed, Capacities and Weight

---

**Displacement:** 9700 Pounds

**Water Capacity:** 55 Gallons

**Holding Tank:** 15 Gallons

**Fuel Capacity:** 18 Gallons

## Accommodations

---

**Total Cabins:** 2

**Total Berths:** 3

**Total Heads:** 1

---

## Hull and Deck Information

---

**Hull Material:** Fiberglass

**Hull Configuration:** Monohull

---

## Engine Information

---

**Engines:** 1

**Manufacturer:** Yanmar

**Model:** 3GM30F

**Engine Type:** Inboard

**Fuel Type:** Diesel

---

## DETAILED INFORMATION

---

### Walkthru

---

Entering the cockpit you have seating both Stb and Port. Folding Lewmar wheel on pedestal, Custom stern railing with jump seats, Bimini and Dodger,, Center-line Companionway, at base of steps you have a u-shaped galley to port, Fwd to Port is a Nav Station, Across is your head is to Stb, Your master cabin with custom cabinets is aft to Stb, Forward are Settees and a Convertible Table, Fwd in the bow is a V-berth which has been converted to Hanging Locker and Storage.

### Accommodations

---

There are 2 Cabins and a Convertible Stb Settee that give the vessel the ability to sleep 6. The V-Berth has a hanging rod for clothes and additional storage, It can converted back to it;s original form. Aft the master has Custom cabinets and drawers on the Stb side. The Table in the salon converts to a sleeping platform for a additional sleeping area.

### Galley

---

The Galley is U-Shaped to port, has SS double Sink, Forceio Two burner Propane cook top with an Orico Microwave under it, New Adler Barber Refrigerator, Ice box has electric pump out, Good Storage, Drawers, Under Counter Trash

### Additional Units Included

---

- West Marine

### Electronics

---

B&G GPSSpeed, DepthWindPositionAIS Receiver and TransmitterPlastimo  
CompassRaymarine Auto Pilot ST 4000B&G VHF plus second unitLev-o-Gauge

### Electrical

---

AC/DC electrical systems2 AGM House Batteries1 AGM Starting BatteryXantrex Battery Charger and Monitor2 Solor Panel on Bimini Xantrex Inverter30 Amp shore powerAll Cabin and Running Lights are LED12,000 BTU Marine Air ACSS Hot Heater in 2012Smoke AlarmCO2 Alarm

---

## Deck and Hull

---

Bimini and Dodger w/Eisenglass and ScreensPedestal with Lewmar Folding Wheel4 Hatches8 PortsSwim Platform with LadderTransom Shower Weaver DavitsBow and Stern Stanchions RailsRunning Rigging Replaced All Lines Lead Aft w/ ClutchesSimpson Windless w/ Rode and Chain2 AnchorsCockpit Cushions

---

## Sails and Rigging

---

Doyle Roller furling Main135 High Clew Jib on a Pro Furl Roller150 Deck SweeperAll Running Rigging ReplacedWhisker PoleLewmar BlocksLewmar Winches #30Lewmar Winches #40Soild Boom VangMain Sheet TravelerInboard Genoa TrackLewmar BlocksBaby Stay

---

## Head

---

Jabsco Manuel HeadHolding Tank with Y-ValueShowerSink w/Storage under

---

## Dingy and Spares

---

West Marine Soft Bottom6hp Tohatsu four strokeManuel Oil PumpFilters BeltsMagma SS GrillPaddle Board

---

## Engine

---

Yanmar 28 hp1862 hours Manual Oil Change PumpNew StarterFull Service in October 2017

---

## Exclusions

---

Owner's personal belongings.

---

## Disclaimer

---

The Company offers the details of this vessel or yacht in good faith but cannot guarantee or warrant the accuracy of this information nor warrant the condition of the vessel. A buyer should instruct his representatives, agents, or his surveyors, to investigate such details as the buyer desires validated. This vessel or yacht is offered subject to prior sale, price change, or withdrawal without notice.

# PHOTOS

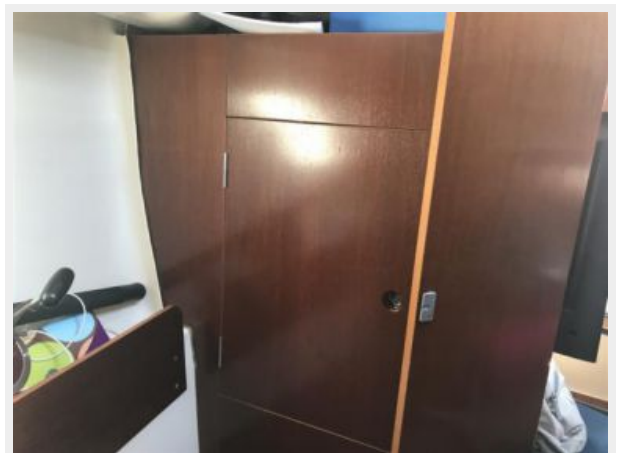


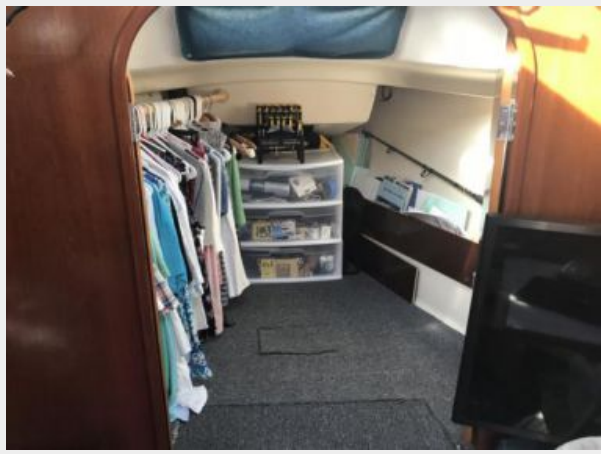














# CONTACTS

---

Andrey Shestakov, leading yacht broker of the sales department of Shestakov Yacht Sales Inc. Shestakov Yacht Sales Inc., the official representative of the Miami/Fort Lauderdale FL headquarters.

## Contact details

---

Email: [andrey@shestakovyachtsales.com](mailto:andrey@shestakovyachtsales.com)

Web: [shestakovyachtsales.com/en/](http://shestakovyachtsales.com/en/)

## Telephones

---

USA: +1(954)274-4435

## Office hours

---

Monday – Saturday: **9:00 - 21:00** EDT

Sunday: **closed**

## Address

---



Harbour Towne Marina, 850 NE 3rd St,  
STE 213, Dania, FL 33004