

MY LIFE RAFT — BERTRAM



Builder: BERTRAM

Year Built: 2001

Model: Sport Fisherman

Price: PRICE ON APPLICATION

Location: Barbados

LOA: 51' 0" (15.54m)

Beam: 16' 0" (4.88m)

Max Draft: 5' 0" (1.52m)

Cruise Speed: 27 Kts. (31 MPH)

Max Speed: 31 Kts. (36 MPH)

Our experienced yacht broker, Andrey Shestakov, will help you choose and buy a yacht that best suits your needs **My Life Raft — BERTRAM** from our catalogue. Presently, at Shestakov Yacht Sales Inc., we have a wide variety of yachts available on our sale's list. We also work in close contact with all the big yacht manufacturers from all over the world.

If you would like to buy a yacht **My Life Raft — BERTRAM** or would like help answering any questions concerning purchasing, selling or chartering a yacht, please call **+1(954)274-4435**

TABLE OF CONTENTS

TABLE OF CONTENTS	2
SPECIFICATIONS	5
Overview	5
Basic Information	5
Dimensions	5
Speed, Capacities and Weight	5
Accommodations	6
Hull and Deck Information	6
Engine Information	6
PHOTOS	7
Starboard Side	7
Port	7
Starboard Superstructure	7
Foredeck Looking Aft	7
Tender	8
Foredeck	8
Pulpit	8
Transom	8
Cockpit	8
Cockpit	8
Cockpit Table	9
Cockpit Amenities	9
Livewell	9
Engine Room Entry	9
Engine Room	9
Port Engine	9
Starboard Engine	10
Battery Chargers	10

Flybridge	10
Shaft Seals	10
Flybridge Seating	10
Helm Seating	10
Helm	11
Helm Gauges	11
Tower	11
Hour Meters	11
Tower Seating	11
Tower	11
Radar	12
Salon Entry	12
Salon	12
Salon Looking Forward	12
Salon	12
Settee	12
Dinette	13
Galley	13
Galley Counter	13
Galley Storage	13
Companionway	13
Galley Stove	13
Hall to Staterooms	14
Master Stateroom	14
Master TV	14
Master Head	14
Master Vanity	15
VIP Stateroom	15
Guest Vanity	15

Guest Shower	15
Guest Berths	16
Laundry	16
CONTACTS	17
Contact details	17
Telephones	17
Office hours	17
Address	17

SPECIFICATIONS

Overview

This 2001 510 Convertible is extremely well-optioned, maintained and equipped. Powered by MAN 1050 V10's, "My Life Raft" provides a comfortable 27kt cruise. This Bertram 510 is equipped with Garmin electronics, dual Kohler 15kW Generators, watermaker, davit, Eskimo ice maker, bow thruster, Pipewelders tower, Caribe tender, cockpit freezer and much more. This 510 is the nicest one currently available; call today for more information or to schedule your showing.

Tender Included!

Basic Information

Category: Sport Fisherman

Sub Category: Convertible

Model Year: 2001

Year Built: 2001

Country: Barbados

Fly Bridge: Yes

Cockpit: Yes

Dimensions

LOA: 51' 0" (15.54m)

Beam: 16' 0" (4.88m)

Max Draft: 5' 0" (1.52m)

Speed, Capacities and Weight

Cruise Speed: 27 Kts. (31 MPH)

Max Speed: 31 Kts. (36 MPH)

Displacement: 66000 Pounds

Water Capacity: 185 Gallons

Fuel Capacity: 1040 Gallons

Accommodations

Total Cabins: 3

Total Heads: 2

Hull and Deck Information

Hull Material: Fiberglass

Engine Information

Engines: 2

Manufacturer: MAN

Model: 1050 V10 D2840

Engine Type: Inboard

Fuel Type: Diesel

PHOTOS

Port



Starboard Side



Starboard Superstructure



Foredeck Looking Aft



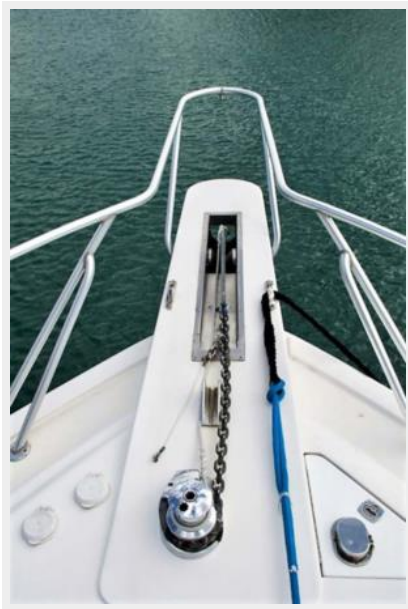
Foredeck



Tender



Pulpit



Transom



Cockpit



Cockpit



Cockpit Table



Cockpit Amenities



Livewell



Engine Room Entry



Engine Room



Port Engine



Starboard Engine



Battery Chargers



Shaft Seals



Flybridge



Flybridge Seating



Helm Seating



Helm



Helm Gauges



Hour Meters



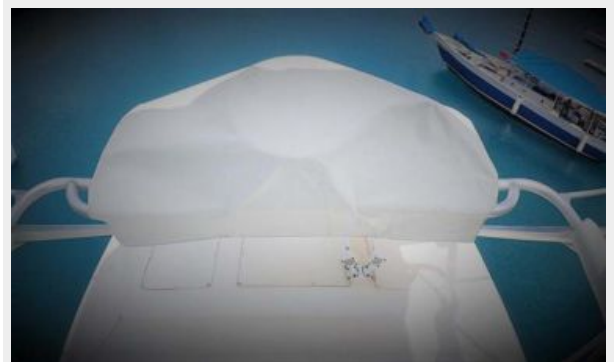
Tower



Tower Seating



Tower



Radar



Salon Entry



Salon



Salon Looking Forward



Salon



Settee



Dinette



Galley



Galley Counter



Galley Storage



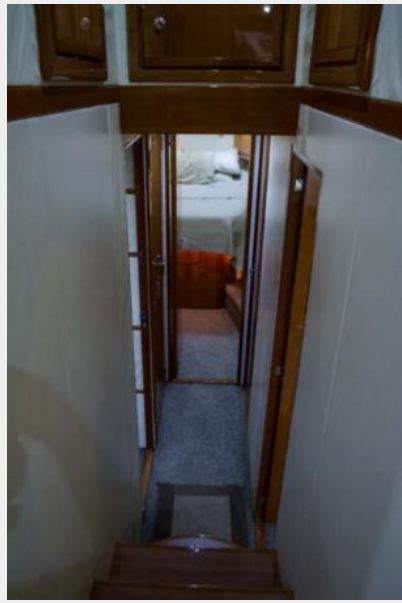
Galley Stove



Companionway



Hall to Staterooms



Master Stateroom



Master TV



Master Head



Master Vanity



VIP Stateroom



Guest Vanity



Guest Shower



Guest Berths



Laundry



CONTACTS

Andrey Shestakov, leading yacht broker of the sales department of Shestakov Yacht Sales Inc. Shestakov Yacht Sales Inc., the official representative of the Miami/Fort Lauderdale FL headquarters.

Contact details

Email: andrey@shestakovyachtsales.com

Web: shestakovyachtsales.com/en/

Telephones

USA: +1(954)274-4435

Office hours

Monday – Saturday: **9:00 - 21:00** EDT

Sunday: **closed**

Address



Harbour Towne Marina, 850 NE 3rd St,
STE 213, Dania, FL 33004