

## REEL SCREAMER — VIKING



**Builder:** [VIKING](#)

**Year Built:** 2016

**Model:** Sport Fisherman

**Price:** PRICE ON APPLICATION

**Location:** Costa Rica

**LOA:** 55' 0" (16.76m)

**Beam:** 17' 9" (5.41m)

**Max Draft:** 5' 1" (1.55m)

Our experienced yacht broker, Andrey Shestakov, will help you choose and buy a yacht that best suits your needs **Reel Screamer — VIKING** from our catalogue. Presently, at Shestakov Yacht Sales Inc., we have a wide variety of yachts available on our sale's list. We also work in close contact with all the big yacht manufacturers from all over the world.

If you would like to buy a yacht **Reel Screamer — VIKING** or would like help answering any questions concerning purchasing, selling or chartering a yacht, please call **+1(954)274-4435**

# TABLE OF CONTENTS

---

TABLE OF CONTENTS	2
SPECIFICATIONS	5
Overview	5
Basic Information	5
Dimensions	5
Speed, Capacities and Weight	5
Accommodations	5
Hull and Deck Information	6
Engine Information	6
DETAILED INFORMATION	7
Manufacturer Provided Description	7
Notable Features	7
Flybridge	8
Salon	8
Galley	9
Cockpit	9
Master Stateroom	9
Master Stateroom Head	10
Forward Stateroom	10
Forward Stateroom Head	10
Port Stateroom	10
Engine Room	10
Hull	11
Electronics	11
Disclaimer	11
Exclusions	12
Disclaimer	12
PHOTOS	13

Viking 55 Convertible Salon / Galley	13
Viking 55 Convertible Salon / Galley	13
Viking 55 Convertible Salon	13
Viking 55 Convertible Salon	13
Viking 55 Convertible Salon	13
Viking 55 Convertible Galley	13
Viking 55 Convertible Galley	14
Viking 55 Convertible Galley	14
Viking 55 Convertible Master Stateroom	14
Viking 55 Convertible Master Head	14
Viking 55 Convertible Forward Guest Stateroom	14
Viking 55 Convertible Master Head	14
Viking 55 Convertible Guest Head	15
Viking 55 Convertible Twin Guest Stateroom	15
Viking 55 Convertible Flybridge	15
Viking 55 Convertible Flybridge	15
Viking 55 Convertible Flybridge	15
Viking 55 Convertible Flybridge	15
Viking 55 Convertible Engine Room	16
Viking 55 Convertible Engine Room	16
Viking 55 Convertible Starboard Engine	16
Viking 55 Convertible Starboard Engine	16
Viking 55 Convertible Port Engine	16
Viking 55 Convertible Port Engine	16
Viking 55 Convertible Transom Profile	17
Viking 55 Convertible Cockpit	17
Viking 55 Convertible Drone Profile	17
Viking 55 Convertible Drone Profile	17
Viking 55 Convertible Drone Profile	17

Viking 55 Convertible Drone Profile	17
Viking 55 Convertible Drone Profile	18
Viking 55 Convertible Drone Profile	18
Viking 55 Convertible Drone Profile	18
Viking 55 Convertible Drone Profile	18
Viking 55 Convertible Drone Profile	18
Viking 55 Convertible Drone Profile	18
Viking 55 Convertible Drone Profile	19
Viking 55 Convertible Drone Profile	19
Viking 55 Convertible Drone Profile	19
Viking 55 Convertible Drone Profile	19
Viking 55 Convertible Profile	19
Viking 55 Convertible Drone Profile	19
Viking 55 Convertible Profile	20
Viking 55 Convertible Profile	20
Viking 55 Convertible Profile	20
Viking 55 Convertible Profile	20
Viking 55 Convertible Profile	20
Viking 55 Convertible Profile	20
Viking 55 Convertible Profile	20
Viking 55 Convertible Profile	21
Viking 55 Convertible Profile	21
Viking 55 Convertible Profile	21
Viking 55 Convertible Profile	21
CONTACTS	22
Contact details	22
Telephones	22
Office hours	22
Address	22

---

# SPECIFICATIONS

---

## Overview

---

Don't miss the opportunity on this new to the market 2016 55 Viking in Los Suenos, Costa Rica. She has been exceptionally equipped by her experienced Viking owner and maintained by her full time captain. She is equipped with a Seakeeper 9, two generators, watermaker, eskimo ice chipper, and MAN extended service coverage until 9/18/20 or 2,500 hours. Please call for more details or to arrange a showing of this beautiful tournament rigged Viking!

## Basic Information

---

**Category:** Sport Fisherman

**Model Year:** 2016

**Year Built:** 2016

**Country:** Costa Rica

**Registration #:** 1264629

**Fly Bridge:** Yes

**Cockpit:** Yes

## Dimensions

---

**LOA:** 55' 0" (16.76m)

**Beam:** 17' 9" (5.41m)

**Max Draft:** 5' 1" (1.55m)

**MFG Length:** 55' 0" (16.76m)

## Speed, Capacities and Weight

---

**Displacement:** 77700 Pounds

**Water Capacity:** 225 Gallons

**Holding Tank:** 100 Gallons

**Fuel Capacity:** 1615 Gallons

## Accommodations

---

**Total Cabins:** 3

**Total Heads:** 2

---

## Hull and Deck Information

---

**Hull Material:** Composite

## Engine Information

---

**Engines:** 2

**Manufacturer:** MAN

**Model:** V12

**Engine Type:** Inboard

**Fuel Type:** Diesel

---

# DETAILED INFORMATION

---

## Manufacturer Provided Description

---

Like many Vikings, the 55 is a blue-water overachiever, which says a lot about any new model. But in this case, it means even more because of the big boat shoes it has been designed to fill.

In 1996, Viking introduced its first 55 Convertible at the Ft. Lauderdale Boat Show. This model broke new ground with style and out gunned the competition not only with its performance but with its movie star popularity that trampled the competition in sales. Over the next five years, Viking would build over 150 55 Convertibles. No other boat by any manufacturer in this size range would even come close.

Performance wise, the 55 Convertible eagerly rushes to top speeds in excess of 40 knots. Like to fish offshore, but sleep late? This ride is for you.

The cockpit and flying bridge have been designed around the experiences of a thousand fishing tournaments, but you don't have to be a hard core blue water angler to appreciate the built in conveniences and amenities like a center console helm station, or observation mezzanine in the split level cockpit.

## Notable Features

---

Sea Keeper Gyro NG 9

Additional 13.5KW Generator

700 GPD Watermaker with Auto Backflush

Release Teak Helm Pod

Lewmar V4 SS Windglass

Recessed Electric Teaser Reels 24VDC

Custom Upgrade Helm Chairs to Release Trillion Series

Crushed Ice Machine in Mezz Box

12VDC – 30 Amp Outlet – for Teaser Reels

Mezzanine Air Conditioning with Discharge Vents

Additional Fuel Tanks - Total of (3)

---

## Flybridge

---

Drop Down Electronics Box in Hardtop

Electronic Single – Lever Controls For Helm Pod

Release Teak Helm Pod

Lewmar V4 SS Windglass

Fiberglass Hardtop

Rupp Outriggers with Spreaders

Costa, Clear on Front and Sides of Enclosure

Custom Upgrade Helm Chairs to Release Trillion Series

Recessed Electric Teaser Reels 24VDC

Custom Upgrade Bridge Cushions

Electronic Trolling Valves

Recessed Electronics Boxes

Freezer Box

Drink Box

VHF Radio

Custom – (7) Rod Holders on Top Rail

Custom – (8) Rod Holders on Lower Rail

---

## Salon

---

Costa, Canvas Carpet Runner with Step Covers

Carpet Runner, Full, Canvas

Electric Door Opener

Custom Upgraded Sofa

Teak Salon Entertainment Center

46' Flat Screen TV



Dimmer lighting

---

## Galley

---

Custom Cambria Countertops

Custom Avalon Etal Mosaic Backsplash

Custom Amtico Flooring

---

## Cockpit

---

Custom Upgrade Mezzanine Cushions with Drink Bolster

Crushed Ice Machine in Mezz Box

12VDC – 30 Amp Outlet – for Teaser Reels

Mezzanine Air Conditioning with Discharge Vents

Teak Deck, Mezzanine, and ladder treads

Second Cablemaster

Additional Rod Holders

Two 24V Outlets FWD

Fresh Water Washdown

Transom Swim Steps

Mezzanine Freezer Storage with Dividers

Blue LED Lighting in Cockpit

Tri-Color Lighting – Cockpit Overhang

Stainless Bait tray

---

## Master Stateroom

---

Queen Bed

32' Flat Screen TV

Dimmer lighting

## **Master Stateroom Head**

---

Custom Cambria Vanity Top

Custom Amtico Flooring

## **Forward Stateroom**

---

Crossover bed arrangement

Dimmer lighting

## **Forward Stateroom Head**

---

Custom Cambria Vanity Top

Dimmer Lighting

Custom Amtico Flooring

## **Port Stateroom**

---

2 Twin Beds

Dimmer Lighting

## **Engine Room**

---

MAN V12 – 1550HP

MAN extended service coverage until 9/18/20 or 2,500 hours

700 GPD Watermaker with Auto Backflush

Sea Keeper Gyro NG 9

Additional 13.5KW Generator

---

## Hull

---

DC Bow Thruster

Additional Fuel Tanks - Total of (3)

---

## Electronics

---

Atlantic Marine Electronics

Furuno Navnet 3D DRS25A Radar / Processor – (2) 15” Displays

Garmin GPSMAP8208 – 8” TS MFD

Furuno FA50 12/24VDC AIS Black Box

Furuno FCV 1200BB Sounder W/Landscape Control – 15’ Display

Furuno 200KHZ Transducer

Furuno 50KHZ Transducer

Garmin GSD-26 Chirp Video Sounder

Garmin AutoPilot W/GHC20

Fusion MS-UD750 Stereo

KVM TRACPHONE

New KVH 9 - SAT TV

Engine Room – Mini Ball Camera

KVM TracVision HD7 SAT TV

Salon – MX-5000i Remote Control with Ipod Dock

Gost NAVTracker Evolution 2.0

Lumishore Lights with controller and WIFI connection

---

## Disclaimer

---

The Company offers the details of this vessel in good faith but cannot guarantee or warrant the accuracy of this information nor warrant the condition of the vessel. A buyer should instruct his agents, or his surveyors, to investigate such details as the buyer desires validated. This vessel is

---

offered subject to prior sale, price change, or withdrawal without notice.

Mechanical Disclaimer Engine and generator hours are as of the date of the original listing and are a representation of what the listing broker is told by the owner and/or actual reading of the engine hour meters. The broker cannot guarantee the true hours. It is the responsibility of the purchaser and/or his agent to verify engine hours, warranties implied or otherwise and major overhauls as well as all other representations noted on the listing.

X

## Exclusions

---

Owner's personal belongings.

## Disclaimer

---

The Company offers the details of this vessel or yacht in good faith but cannot guarantee or warrant the accuracy of this information nor warrant the condition of the vessel. A buyer should instruct his representatives, agents, or his surveyors, to investigate such details as the buyer desires validated. This vessel or yacht is offered subject to prior sale, price change, or withdrawal without notice.

# PHOTOS

**Viking 55 Convertible Salon / Galley**



**Viking 55 Convertible Salon / Galley**



**Viking 55 Convertible Salon**



**Viking 55 Convertible Salon**



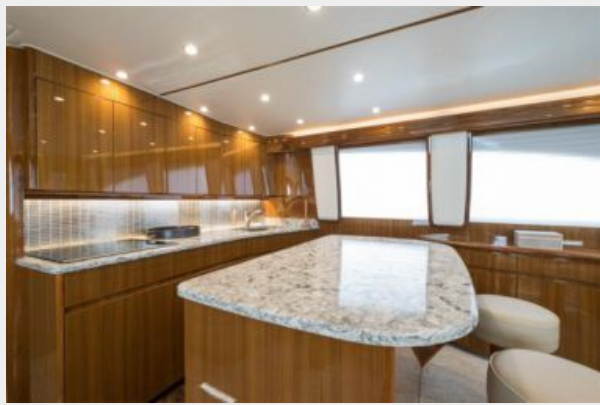
**Viking 55 Convertible Salon**



**Viking 55 Convertible Galley**



**Viking 55 Convertible Galley**



**Viking 55 Convertible Galley**



**Viking 55 Convertible Master Stateroom**



**Viking 55 Convertible Master Head**



**Viking 55 Convertible Master Head**



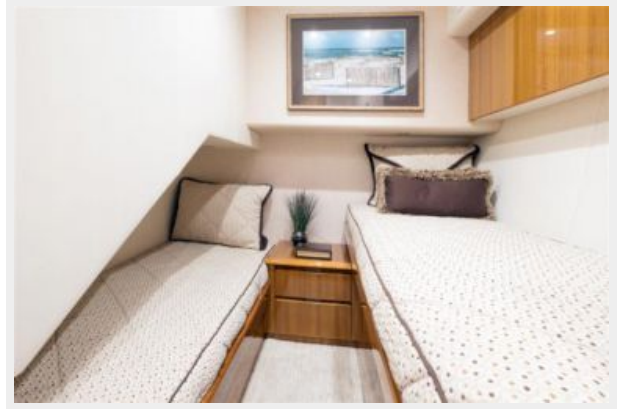
**Viking 55 Convertible Forward Guest Stateroom**



**Viking 55 Convertible Guest Head**



**Viking 55 Convertible Twin Guest Stateroom**



**Viking 55 Convertible Flybridge**



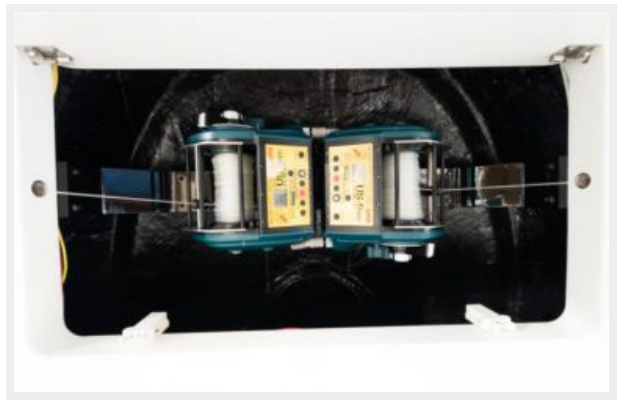
**Viking 55 Convertible Flybridge**



**Viking 55 Convertible Flybridge**



**Viking 55 Convertible Flybridge**



**Viking 55 Convertible Engine Room**



**Viking 55 Convertible Engine Room**



**Viking 55 Convertible Starboard Engine**



**Viking 55 Convertible Starboard Engine**



**Viking 55 Convertible Port Engine**



**Viking 55 Convertible Port Engine**





### Viking 55 Convertible Transom Profile

### Viking 55 Convertible Cockpit



### Viking 55 Convertible Drone Profile



### Viking 55 Convertible Drone Profile



### Viking 55 Convertible Drone Profile



### Viking 55 Convertible Drone Profile



**Viking 55 Convertible Drone Profile**



**Viking 55 Convertible Drone Profile**



**Viking 55 Convertible Drone Profile**



**Viking 55 Convertible Drone Profile**



**Viking 55 Convertible Drone Profile**



**Viking 55 Convertible Drone Profile**



**Viking 55 Convertible Drone Profile**



**Viking 55 Convertible Drone Profile**



**Viking 55 Convertible Drone Profile**



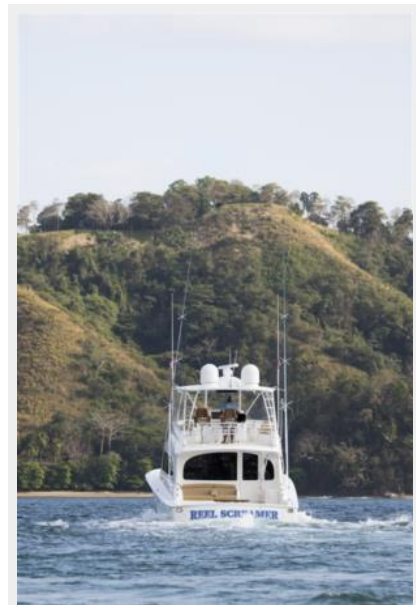
**Viking 55 Convertible Drone Profile**



**Viking 55 Convertible Drone Profile**



**Viking 55 Convertible Profile**



**Viking 55 Convertible Profile**



**Viking 55 Convertible Profile**



**Viking 55 Convertible Profile**



**Viking 55 Convertible Profile**



**Viking 55 Convertible Profile**



**Viking 55 Convertible Profile**



**Viking 55 Convertible Profile**

**Viking 55 Convertible Profile**



**Viking 55 Convertible Profile**



**Viking 55 Convertible Profile**



# CONTACTS

---

Andrey Shestakov, leading yacht broker of the sales department of Shestakov Yacht Sales Inc. Shestakov Yacht Sales Inc., the official representative of the Miami/Fort Lauderdale FL headquarters.

## Contact details

---

Email: [andrey@shestakovyachtsales.com](mailto:andrey@shestakovyachtsales.com)

Web: [shestakovyachtsales.com/en/](http://shestakovyachtsales.com/en/)

## Telephones

---

USA: +1(954)274-4435

## Office hours

---

Monday – Saturday: **9:00 - 21:00** EDT

Sunday: **closed**

## Address

---



Harbour Towne Marina, 850 NE 3rd St,  
STE 213, Dania, FL 33004