

## BOATOX — AZIMUT



**Builder:** AZIMUT

**Year Built:** 2016

**Model:** Motor Yacht

**Price:** PRICE ON APPLICATION

**Location:** United States

**LOA:** 60' 0" (18.29m)

**Beam:** 16' 5" (5.00m)

**Cruise Speed:** 28 Kts. (32 MPH)

**Max Speed:** 32 Kts. (37 MPH)

Our experienced yacht broker, Andrey Shestakov, will help you choose and buy a yacht that best suits your needs **BOATOX — AZIMUT** from our catalogue. Presently, at Shestakov Yacht Sales Inc., we have a wide variety of yachts available on our sale's list. We also work in close contact with all the big yacht manufacturers from all over the world.

If you would like to buy a yacht **BOATOX — AZIMUT** or would like help answering any questions concerning purchasing, selling or chartering a yacht, please call **+1(954)274-4435**

# TABLE OF CONTENTS

TABLE OF CONTENTS	2
SPECIFICATIONS	3
Overview	3
Basic Information	3
Dimensions	3
Speed, Capacities and Weight	4
Accommodations	4
Hull and Deck Information	4
Engine Information	4
DETAILED INFORMATION	5
Cockpit	5
Flybridge	5
Salon	5
Galley	5
Lower Helm	6
Master Stateroom	6
VIP and Guest Staterooms	6
Engine Room/ Mechanical	7
Exclusions	7
Disclaimer	7
PHOTOS	8
CONTACTS	17
Contact details	17
Telephones	17
Office hours	17
Address	17

---

# SPECIFICATIONS

---

## Overview

---

PRICE REDUCED - MUST GO

2016 Azimut 60 Flybridge

Full-Time Captain Maintained

Extended MAN Warranty

- Twin MAN R6 Diesels - 460 Hours
- Aventics Joystick Control with Bow Thruster
- Seakeeper Gyro Stabilizer
- FLIR Nightvision Camera
- Wireless Yacht Controller
- Fresh Bottom Job and Full Service Completed October 2017
- Full Raymarine Electronics Package
- KVH Satellite TV - HD7
- Hydraulic Swim Platform - Tender Lift
- Fusion Stereo with Upgraded JL Speakers
- 3 Stateroom, 2 Head Layout (+Crew) with Upgraded Zebrano Interior

DYSID 3175203

---

## Basic Information

---

**Category:** Motor Yacht

**Sub Category:** Cruiser

**Model Year:** 2016

**Year Built:** 2016

**Country:** United States

**Fly Bridge:** Yes

---

## Dimensions

---

**LOA:** 60' 0" (18.29m)

**Beam:** 16' 5" (5.00m)

---

## Speed, Capacities and Weight

---

**Cruise Speed:** 28 Kts. (32 MPH)

**Max Speed:** 32 Kts. (37 MPH)

**Water Capacity:** 170 Gallons

**Fuel Capacity:** 740 Gallons

---

## Accommodations

---

**Total Cabins:** 3

**Total Heads:** 2

---

## Hull and Deck Information

---

**Hull Material:** Fiberglass

---

## Engine Information

---

**Engines:** 2

**Manufacturer:** MAN

**Model:** R6 - 800

**Engine Type:** Inboard

**Fuel Type:** Diesel

---

# DETAILED INFORMATION

---

## Cockpit

---

- The cockpit is extremely spacious with teak throughout.
- The swim platform is hydraulic and equipped with chocks for a tender.
- There are multiple storage areas on the port and starboard sides.
- The crew quarters is accessed through the bench seat as well as a transom door from the swim platform.
- Engine access is through a large hatch in the cockpit sole.
- The battery switches are conveniently located on the starboard side as you enter the large sliding glass doors into the salon.
- A Fusion stereo remote controls the upgraded JL audio system in the cockpit area.
- A molded, teak staircase leads up to the bridge on the port side of the cockpit.

## Flybridge

---

- The flybridge is also an expansive area with seating for 10+ and a large layout area aft.
- There is an outdoor galley unit to port with a sink, fridge and ice maker.
- There are JL speakers and subwoofers throughout the flybridge.
- LED lighting in the hard top lights up the area very well.
- 6 sky lights also lend to a large amount of sunlight during the day.
- The upper helm is equipped with full Raymarine electronics, Xenta joystick, VHF, Autopilot, searchlight and windlass controls.

## Salon

---

- The salon is yet another large gathering area that boasts an L shaped sofa to port and love seat to starboard.
- There is a 46 inch LG flatscreen equipped with a DVD player as well as SAT TV.
- Bose surround sound makes the viewing experience excellent on the Samsung.
- 2 small steps lead up to the the dining area to starboard just across from the large U shaped galley to port.
- Every TV including the crew cabin is equipped with a Direct TV receiver.

## Galley

---

- The galley is U-shaped with ample storage and beautiful granite counters.
- The hardwood flooring continues from the salon throughout the galley area.
- She is equipped with separate Isotherm fridge and Vitrifrigo freezer.

- Miele Oven and 3 burner Miele cooktop.
- Large double basin, stainless steel Franke sink.
- Beautiful chrome fixture and separate filtered spout.

---

## Lower Helm

---

- The beautiful, leather Treben helm set is the first thing you will notice at the lower helm station.
- The moves up and down and forward and back electronically.
- 2 electric windows to port and starboard open up to allow air flow through the helm/galley.
- She is equipped with twin Raymarine 15 inch Hybrid Touchscreen plotters.
- FLIR Camera and aft facing cameras display on Raymarine screen.
- Seakeeper Gyro display.
- Raymarine sounder.
- Separate Raymarine autopilot control.
- Aventics joystick.
- Digital MAN gauges for each R6.
- Quick windlass control and chain counter.
- Jabsco searchlight.
- Trim tab control.
- Push button start and stop for MAN engines.
- Electronic throttle control for MAN engines.
- To starboard is the digital display for the alarms and electrical status.

---

## Master Stateroom

---

- As you make your way down the stairway, to port you have a combo washer and dryer unit.
- The master is full beam and boasts huge windows on the port and starboard side just above the waterline.
- The queen berth is easily accessed from both sides.
- To starboard is a large seating area complemented with a leather and wood table.
- There are 3 storage lockers and even more storage space in the master bath.
- The ambient lighting behind the leather wall panels gives the room a great touch.
- There is also a wall mounted flat screen and separate AC control for the master.
- The head has a separate stall shower, basin sink and plenty of storage room for extended cruising.

---

## VIP and Guest Staterooms

---

- Tons of natural light floods the VIP cabin with 6 small ports and an overhead hatch.
- There is yet another wall mounted flatscreen and separate AC controls for this area.

- The day head is also accessed by the VIP through an adjoining door.
- The guest stateroom is equipped with 2 twin berths.
- There is a large port for natural light in this room as well.
- Also equipped with a flatscreen and large locker for storage.
- The day head also has a separate stall shower and again plenty of storage for extended stays.

---

## Engine Room/ Mechanical

---

- 2 x MAN R6 800 hp - 462 Hours Port, 461 Hours Starboard.
- Main engines and generator equipped with Racor fuel filtration.
- Immaculate engine room. Extremely well maintained by full-time captain.
- The large space makes daily checks simple and allows for plenty of room to perform maintenance.
- Condaria AC chiller - De-scaled once every 6 months. 72,000 BTUs.
- 20 kW Kohler generator - 632 hours.
- Captain maintains full log books with all maintenance.
- Bottom job, 400 hour MAN service and generator service completed in October of 2017.
- Props pulled and reconditioned October 2017.
- 80 Amp/24 Volt Quick battery charger.

---

## Exclusions

---

Owner's personal belongings.

---

## Disclaimer

---

The Company offers the details of this vessel or yacht in good faith but cannot guarantee or warrant the accuracy of this information nor warrant the condition of the vessel. A buyer should instruct his representatives, agents, or his surveyors, to investigate such details as the buyer desires validated. This vessel or yacht is offered subject to prior sale, price change, or withdrawal without notice.

# PHOTOS



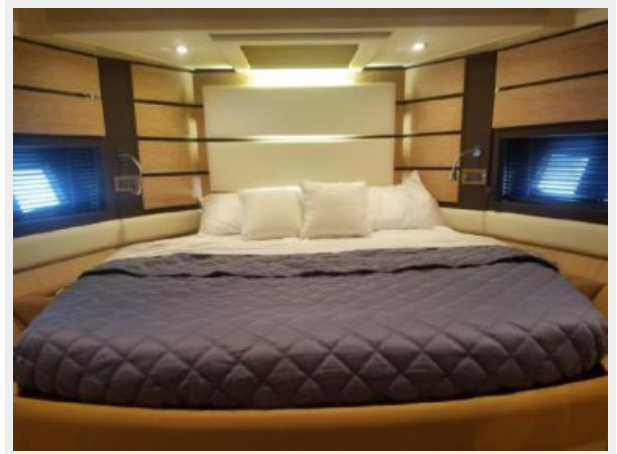


























---

# CONTACTS

---

Andrey Shestakov, leading yacht broker of the sales department of Shestakov Yacht Sales Inc. Shestakov Yacht Sales Inc., the official representative of the Miami/Fort Lauderdale FL headquarters.

---

## Contact details

---

Email: [andrey@shestakovyachtsales.com](mailto:andrey@shestakovyachtsales.com)

Web: [shestakovyachtsales.com/en/](http://shestakovyachtsales.com/en/)

---

## Telephones

---

USA: +1(954)274-4435

---

## Office hours

---

Monday – Saturday: **9:00 - 21:00** EDT

Sunday: **closed**

---

## Address

---



Harbour Towne Marina, 850 NE 3rd St,  
STE 213, Dania, FL 33004