

## BOATOX — AZIMUT



**Судостроитель:** [AZIMUT](#)

**Год постройки:** 2016

**Модель:** Моторная яхта

**Цена:** ЦЕНА ЯХТЫ ПО ЗАПРОСУ

**Местонахождение:** United States

**Длина общая:** 60' 0" (18.29m)

**Ширина:** 16' 5" (5.00m)

**Крейс. скорость:** 28 Kts. (32 MPH)

**Макс. скорость:** 32 Kts. (37 MPH)

Купить **BOATOX — AZIMUT** а также выбрать подходящую вам яхту из нашего каталога яхт вам поможет опытный яхтенный брокер Андрей Шестаков. На сегодняшний день компания **Shestakov Yacht Sales Inc.** имеет большое количество яхт в собственном списке продаж, а также тесно сотрудничает со всеми крупными яхтенными производителями по всему миру.

Для того чтобы купить яхту **BOATOX — AZIMUT** а также проконсультироваться по любому вопросу связанному с покупкой, продажей, чартером яхт позвоните по телефону **+7(918)465-66-44**.

# ОГЛАВЛЕНИЕ

ОГЛАВЛЕНИЕ	2
ХАРАКТЕРИСТИКИ	3
Обзор	3
Основная информация	3
Размеры	3
Скорость, вместимость и масса	4
Размещение	4
Корпус и палуба	4
Информация о двигателе	4
ПОДРОБНОЕ ОПИСАНИЕ	5
Cockpit	5
Flybridge	5
Salon	5
Galley	5
Lower Helm	6
Master Stateroom	6
VIP and Guest Staterooms	6
Engine Room/ Mechanical	7
Исключения	7
Отказ от ответственности	7
ФОТОГРАФИИ	8
КОНТАКТЫ	17
Контактная информация	17
Телефоны	17
Время работы	17
Адрес	17

# ХАРАКТЕРИСТИКИ

## Обзор

PRICE REDUCED - MUST GO

2016 Azimut 60 Flybridge

Full-Time Captain Maintained

Extended MAN Warranty

- Twin MAN R6 Diesels - 460 Hours
- Aventics Joystick Control with Bow Thruster
- Seakeeper Gyro Stabilizer
- FLIR Nightvision Camera
- Wireless Yacht Controller
- Fresh Bottom Job and Full Service Completed October 2017
- Full Raymarine Electronics Package
- KVH Satellite TV - HD7
- Hydraulic Swim Platform - Tender Lift
- Fusion Stereo with Upgraded JL Speakers
- 3 Stateroom, 2 Head Layout (+Crew) with Upgraded Zebrano Interior

DYSID 3175203

## Основная информация

**Тип судна:** Моторная яхта

**Подкатегория:** Крейсер

**Модельный год:** 2016

**Год постройки:** 2016

**Страна:** United States

**Открытая палуба мостика:** Да

## Размеры

**Длина общая:** 60' 0" (18.29m)

**Ширина:** 16' 5" (5.00m)

## Скорость, вместимость и масса

---

**Крейс. скорость:** 28 Kts. (32 MPH)

**Макс. скорость:** 32 Kts. (37 MPH)

**Вместимость воды:** 170 Gallons

**Объем топливного бака:** 740 Gallons

## Размещение

---

**Всего кают:** 3

**Всего ком. состава:** 2

## Корпус и палуба

---

**Материал корпуса:** Fiberglass

## Информация о двигателе

---

**Двигатели:** 2

**Производитель:** MAN

**Модель:** R6 - 800

**Тип двигателя:** Inboard

**Тип топлива:** Diesel

---

# ПОДРОБНОЕ ОПИСАНИЕ

---

## Cockpit

---

- The cockpit is extremely spacious with teak throughout.
- The swim platform is hydraulic and equipped with chocks for a tender.
- There are multiple storage areas on the port and starboard sides.
- The crew quarters is accessed through the bench seat as well as a transom door from the swim platform.
- Engine access is through a large hatch in the cockpit sole.
- The battery switches are conveniently located on the starboard side as you enter the large sliding glass doors into the salon.
- A Fusion stereo remote controls the upgraded JL audio system in the cockpit area.
- A molded, teak staircase leads up to the bridge on the port side of the cockpit.

## Flybridge

---

- The flybridge is also an expansive area with seating for 10+ and a large layout area aft.
- There is an outdoor galley unit to port with a sink, fridge and ice maker.
- There are JL speakers and subwoofers throughout the flybridge.
- LED lighting in the hard top lights up the area very well.
- 6 sky lights also lend to a large amount of sunlight during the day.
- The upper helm is equipped with full Raymarine electronics, Xenta joystick, VHF, Autopilot, searchlight and windlass controls.

## Salon

---

- The salon is yet another large gathering area that boasts an L shaped sofa to port and love seat to starboard.
- There is a 46 inch LG flatscreen equipped with a DVD player as well as SAT TV.
- Bose surround sound makes the viewing experience excellent on the Samsung.
- 2 small steps lead up to the the dining area to starboard just across from the large U shaped galley to port.
- Every TV including the crew cabin is equipped with a Direct TV receiver.

## Galley

---

- The galley is U-shaped with ample storage and beautiful granite counters.
- The hardwood flooring continues from the salon throughout the galley area.
- She is equipped with separate Isotherm fridge and Vitrifrigo freezer.

- Miele Oven and 3 burner Miele cooktop.
- Large double basin, stainless steel Franke sink.
- Beautiful chrome fixture and separate filtered spout.

---

## Lower Helm

---

- The beautiful, leather Treben helm set is the first thing you will notice at the lower helm station.
- The moves up and down and forward and back electronically.
- 2 electric windows to port and starboard open up to allow air flow through the helm/galley.
- She is equipped with twin Raymarine 15 inch Hybrid Touchscreen plotters.
- FLIR Camera and aft facing cameras display on Raymarine screen.
- Seakeeper Gyro display.
- Raymarine sounder.
- Separate Raymarine autopilot control.
- Aventics joystick.
- Digital MAN gauges for each R6.
- Quick windlass control and chain counter.
- Jabsco searchlight.
- Trim tab control.
- Push button start and stop for MAN engines.
- Electronic throttle control for MAN engines.
- To starboard is the digital display for the alarms and electrical status.

---

## Master Stateroom

---

- As you make your way down the stairway, to port you have a combo washer and dryer unit.
- The master is full beam and boasts huge windows on the port and starboard side just above the waterline.
- The queen berth is easily accessed from both sides.
- To starboard is a large seating area complemented with a leather and wood table.
- There are 3 storage lockers and even more storage space in the master bath.
- The ambient lighting behind the leather wall panels gives the room a great touch.
- There is also a wall mounted flat screen and separate AC control for the master.
- The head has a separate stall shower, basin sink and plenty of storage room for extended cruising.

---

## VIP and Guest Staterooms

---

- Tons of natural light floods the VIP cabin with 6 small ports and an overhead hatch.
- There is yet another wall mounted flatscreen and separate AC controls for this area.

- The day head is also accessed by the VIP through an adjoining door.
- The guest stateroom is equipped with 2 twin berths.
- There is a large port for natural light in this room as well.
- Also equipped with a flatscreen and large locker for storage.
- The day head also has a separate stall shower and again plenty of storage for extended stays.

## Engine Room/ Mechanical

---

- 2 x MAN R6 800 hp - 462 Hours Port, 461 Hours Starboard.
- Main engines and generator equipped with Racor fuel filtration.
- Immaculate engine room. Extremely well maintained by full-time captain.
- The large space makes daily checks simple and allows for plenty of room to perform maintenance.
- Condaria AC chiller - De-scaled once every 6 months. 72,000 BTUs.
- 20 kW Kohler generator - 632 hours.
- Captain maintains full log books with all maintenance.
- Bottom job, 400 hour MAN service and generator service completed in October of 2017.
- Props pulled and reconditioned October 2017.
- 80 Amp/24 Volt Quick battery charger.

## Исключения

---

При продаже яхты исключаются личные вещи владельца.

## Отказ от ответственности

---

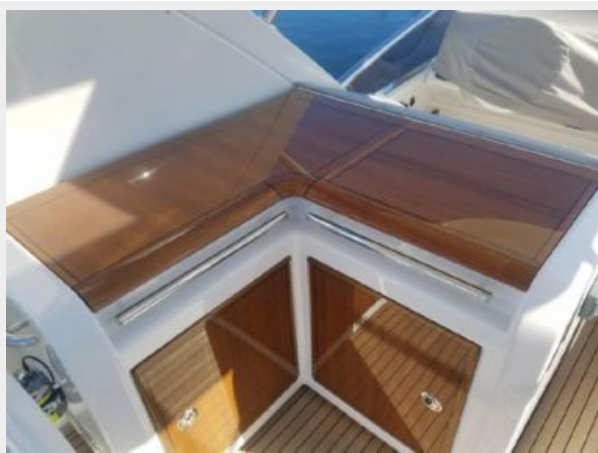
Компания предоставляет описание судна или яхты добросовестно, но не может гарантировать точность этой информации, а также не ручается за техническое состояние. Покупатель должен проинструктировать своих агентов или оценщиков исследовать представленную информацию более подробно, по собственному желанию. Продажа судна или яхты, изменение цены или снятие с продажи будет происходить без предварительного уведомления.

# ФОТОГРАФИИ

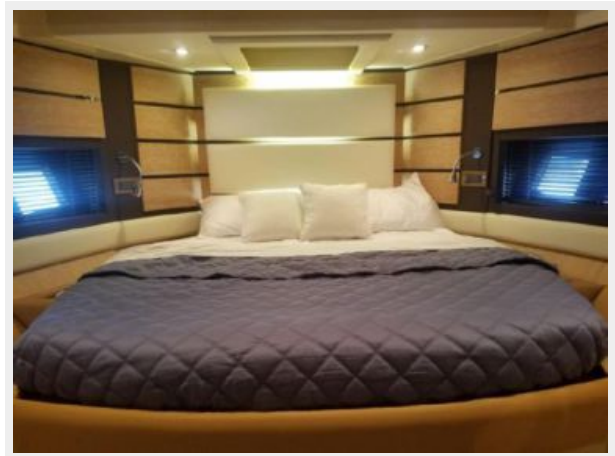






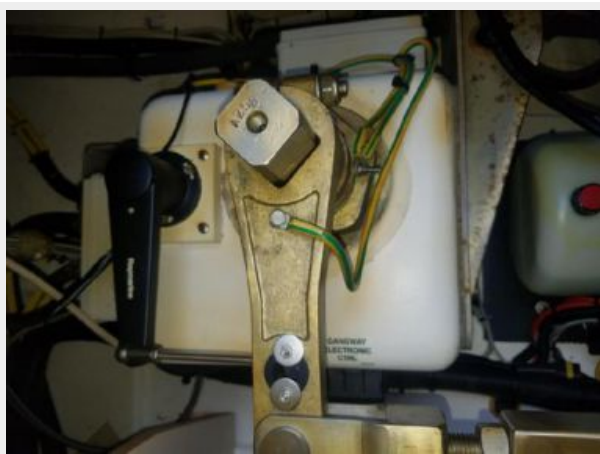
















# КОНТАКТЫ

Андрей Шестаков (Andrey Shestakov) – ведущий яхтенный брокер отдела продаж яхт и судов компании Shestakov Yacht Sales Inc. Официальный представитель Shestakov Yacht Sales Inc. для русскоговорящих клиентов в центральном офисе компании в Майами/Форт Лодердейл/Флорида/США.

## Контактная информация

Email: [andrey@shestakovyachtsales.com](mailto:andrey@shestakovyachtsales.com)

Web: [shestakovyachtsales.com](http://shestakovyachtsales.com)

## Телефоны

Краснодарский край: **+7(918)465-66-44**

США, Майами, Флорида: **+1(954)274-4435**

## Время работы

Понедельник – Суббота: **9:00 - 21:00**  
EDT

Воскресенье: **Закрито**

## Адрес



Harbour Towne Marina, 850 NE 3rd St,  
STE 213, Dania, FL 33004