

2018 HATTERAS M75 FANTASEA — HATTERAS



Builder: HATTERAS

Year Built: 2017

Model: Mega Yacht

Price: PRICE ON APPLICATION

Location: United States

LOA: 75' 0" (22.86m)

Beam: 21' 0" (6.40m)

Max Draft: 5' 3" (1.60m)

Our experienced yacht broker, Andrey Shestakov, will help you choose and buy a yacht that best suits your needs 2018 Hatteras M75 FantaSea — HATTERAS from our catalogue. Presently, at Shestakov Yacht Sales Inc., we have a wide variety of yachts available on our sale's list. We also work in close contact with all the big yacht manufacturers from all over the world.

If you would like to buy a yacht 2018 Hatteras M75 FantaSea — HATTERAS or would like help answering any questions concerning purchasing, selling or chartering a yacht, please call +1(954)274-4435

TABLE OF CONTENTS

TABLE OF CONTENTS	2
SPECIFICATIONS	4
Overview	4
Basic Information	4
Dimensions	4
Speed, Capacities and Weight	4
Accommodations	5
Hull and Deck Information	5
Engine Information	5
DETAILED INFORMATION	6
AV Details	6
Exterior Finish and Construction	6
Hardware and Misc	6
Engine Compartment and Bilge	7
Electrical System	8
Open Flybridge	9
Aft Deck	10
Swim Platform	10
Bow Lounge	10
Interior	10
Exclusions	15
Disclaimer	15
PHOTOS	16
CONTACTS	24
Contact details	24
Telephones	24
Office hours	24
Address	24

SPECIFICATIONS

Overview

This completely custom-designed and decorated Hatteras M75 Panacera is brand new to the market and loaded with upgrades-HMC mattresses, hand-selected tile and stone, teak decking on flybridge, custom exterior lighting, under water lighting, reverse osmosis system, and too many more to list!

Basic Information

Category: Mega Yacht

Model Year: 2018

Year Built: 2017

Country: United States

Registration #: 04101076

Coast Guard #: 1282766

Dimensions

LOA: 75' 0" (22.86m)

Beam: 21' 0" (6.40m)

Max Draft: 5' 3" (1.60m)

Speed, Capacities and Weight

Displacement: 155000 Pounds

Gross Tonnage: 128 Pounds

Water Capacity: 300 Gallons

Holding Tank: 250 Gallons

Fuel Capacity: 2200 Gallons

Accommodations

Total Cabins: 4

Total Berths: 6

Sleeps: 8

Total Heads: 5

Captain Cabin: True

Crew Cabin: 1

Crew Sleeps: 3

Crew Heads: 1

Hull and Deck Information

Hull Material: Fiberglass

Deck Material: Teak

Hull Color: WHITE

Engine Information

Engines: 2

Manufacturer: Caterpillar

Model: CAT C32A

Fuel Type: Diesel

DETAILED INFORMATION

AV Details

AV AND ELECTRONICS PACKAGE UPGRADED THROUGHOUT **Salon** 60" Class LED TV Blu-ray player Denon 5.1 home theater system Front, center, and rear speakers Subwoofer Universal remote control **Master Stateroom** 40" Class LED TV Blu-ray player Denon 5.1 home theater system Front, center, and rear speakers Subwoofer Universal remote control **Bow Stateroom** 32" Class LED TV DC AM/FM stereo with DVD player and Bluetooth 2 - Stereo speakers **Port Guest Stateroom** 24" Class LED TV DC AM/FM stereo with DVD player and Bluetooth 2 - Stereo speakers **Starboard Guest Stateroom** 24" Class LED TV DC AM/FM stereo with DVD player and Bluetooth 2 - Stereo speakers **Crew's Stateroom** 24" Class LED TV DC AM/FM stereo with DVD player and Bluetooth 2 - Stereo speakers **Flybridge** DC AM/FM stereo with internal USB dock and Bluetooth Bulkhead mounted USB port 4 - Stereo speakers connected to zone 1 2 - Stereo speakers connected to zone 2 1 - 10" Amplified subwoofer **Aft Deck** Wired Remote Control to FB Stereo Zone 2 2- Stereo Speakers 1 - 10" Amplified Subwoofer **Bow Deck** Wired remote control to FB stereo zone 3 2- Stereo speakers Whole boat audio and video streaming integration from one source with integrated audio and video storage capabilities for offshore viewing without data connections (Kaleidescape) Internet package Satellite internet package Direct TV package XM/Sirius radio Enhanced exterior speaker package 65" LG, OLED TV in salon 48" Class LED TV W/Lift in port side cabinet in salon

Exterior Finish and Construction

- Isophthalic / NPG gel coat, exterior layer
- Hull and superstructure painted with a premium linear polyester/polyurethane coating for improved cosmetics and increased durability
- Polymer/copper based anti-fouling bottom paint
- Boot stripe, linear polyester/urethane coating-**CUSTOM**
- Decks, non-skid surface, polyurethane paint with polymeric beads
- Resin-infused solid fiberglass hull bottom and composite hull sides with premium vinylester resin and blister resistant gel coat below the waterline
- Molded fiberglass longitudinal stringers with steel engine beds
- Resin-infused bulkheads and interior decks using cross linked foam core

Hardware and Misc

- Boarding Ladder, Marquipt Carbon Fiber Sea Stairs w/ 2 handrails-**UPGRADE**
- Handcrafted European Walnut with satin finish interior
- Fin stabilizer system
- Welded and polished stainless steel anchor chute and roller

- Anchor locker
- 90 lb plow anchor with 300' chain
- Windlass; 3,500 lb electric with deck mounted control switches
- Hydraulic 32 HP dual prop bow thruster
- Polished stainless steel cleats with through bolted-in, robust aluminum backing plates (4 Spring w/chafing strips; 2 Bow; 2 Stern)
- Welded and polished stainless steel rails on bow, side decks and flybridge, with drilled and tapped, robust designed aluminum backing plates
- Stainless steel rudders
- Manganese bronze dripless rudder seals
- Zincs on rudders and shafts
- Alloy 22 high-strength propeller shafts tapered with round keys for reduced stress concentrations at propeller and coupling ends
- Nibral high performance custom propellers
- Dripless shaft seals
- Manganese bronze struts
- Manganese bronze engine couplings
- Trim tabs
- Stainless steel deck plates fuel fill, water fill, and waste pump out
- Dual air horns
- DC LED low level lights on side deck walk-around, port and starboard
- Air conditioning, 90,000 BTU capacity, with reverse cycle heating
- Walk around side decks with LED courtesy lighting

Engine Compartment and Bilge

- Reverse Osmosis System-**UPGRADE**
- Finished engine room and bilges
- Freshwater AC back-up pump
- Insulation in salon deck for sound mitigation
- Water manifold with centralized shut-off valve for sinks and showers
- Centralized drain system with single thru-hull
- Individual sea chests for each engine and gensets, high speed sea chest for water makers, air conditioners and raw water pumps
- Fiberglass rudder shelf bolted to aluminum plates in stringers
- AC fluorescent lights
- DC LED lights
- DC ventilation blower
- Twin diesel, freshwater cooled main engines with electrically controlled marine gears, neutral interlocks, exhaust silencers, engine hour meters, alternators, fuel filters and seawater strainers
- Digital monitoring for main engines
- Engine start / stop switches and hour meter

- FM200 fire extinguishing system for engine compartment with automatic and remote manual controls, plus audible and visual discharge signals
- Two 29kW freshwater-cooled generators with shock mounts, sound enclosure, remote start, seawater strainer, fuel/water separator, hour meter, and water lift muffler with exhaust gas separator
- Generator exhaust water separator
- Polyethylene water lines
- USCG approved fuel lines
- Electric fuel transfer system with filtration and dry tank protection for pump
- AC compressed air system with regulator and accessory connection
- 24V DC bilge and sump pumps with heavy duty float switches and protective guards
- Bronze/chrome ball valves through bolted in solid fiberglass on all underwater through hull fittings with electrical bonding
- Pressurized AC freshwater pump
- Electric water heaters
- Fiberglass fuel tanks constructed with fire retardant resin and bronze fittings
- Fiberglass water tanks, constructed with bronze fittings
- Fiberglass holding tanks, constructed with bronze fittings and 24V DC sewage pump, plumbed for dockside pump out, with 3/4 full display and alarm
- Oil changing system for engines, generators and gears
- Fuel filter/water separators for engines & generators
- Digital monitoring for main engines
- Rubber deck mat between engines
- Engine room air intake demisters

Electrical System

- Underwater lighting-BLUE
- Transom underwater lights (2)-**UPGRADE**
- 24V banks of heavy duty, 12V marine batteries mounted in fire retardant fiberglass boxes (2)
- Tin coated wiring with insulation, labeled and color coded
- Automatic battery charger
- Automatic battery paralleling system with switch at helm console
- 240 Volt, 100A, transformer connected retractable shore cords with over current protection (2)
- Two polarization transformers with boost function
- DC LED lights and fixtures
- Battery control panel with fuses and isolation switches
- AC and DC distribution panels with magnetic circuit breakers
- AC switching panel with source selector switches, volt meter, ampmeter, frequency meter, generator start/stop controls, and distribution panel selector switches
- Navigation lights

- Ground fault protection on AC receptacles and AC lighting circuits
- Omni-directional TV antenna
- Smoke and carbon monoxide detectors
- USB charging ports
- New proprietary HattCON Yacht Management System: seamless and intuitive interface includes fully integrated navigation and ship management. Includes SMS and email alert functionality. Please consult your Authorized Hatteras dealer for full list of details.
- Fully integrated navigation and ship management: Including navigation, radar, chart, sounders, and autopilot
- Two 17" Garmin displays
- Foil mounted integrated controls
- Finger print reader ignition protection with digital passcode backup
- Integrated aft deck camera system
- HattCON iPhone/iPad app fully configurable with dual profiles
- Master/Captain profile with access to main system
- Systems Monitoring-bilges, smoke, fire, CO detection, engine and propulsion data, generator data, AC power, DC power, fuel tank level gauges at deck fills

Open Flybridge

- Teak Decking-**UPGRADE**
- Cabinet with Kenyon Texan Grill-**UPGRADE**
- Two adjustable helm chairs- **CUSTOM**
- Upholstery-**CUSTOM**
- Fiberglass hardtop with acrylic enclosure, overhead LED lighting, mast and anchor light
- Air conditioning, 32,000 BTU capacity with reverse cycle
- Lounge with Dri-fast cushions upholstered in exterior grade fabric, storage; covers included-**CUSTOM**
- Teak high gloss table with stainless steel pedestals-**CUSTOM**
- HattCON LED interactive display
- Clutch and throttle controls with emergency back up and engine synchronization
- Electric power assisted steering
- Control station with all necessary switches and dimmable lighted instruments
- Compass with dimmable light
- DC AM/FM stereo system with internal USB dock, speakers and subwoofer
- Fuel gauges integrated into LED screens
- Welded and polished stainless steel rails
- Framed glass windshield
- Wet bar, refrigerator, icemaker and three barstools
- Molded in stairs to aft deck with hatch
- DC LED low level lights

Aft Deck

- (2) Wing Stations, PT and STBD- **UPGRADE**
- Lounge with Dri-fast cushions upholstered in exterior grade fabric - storage covers included-**CUSTOM**
- Molded fiberglass steps with BLUE lights to flybridge-**CUSTOM**
- Molded fiberglass steps with BLUE lights to swim platform - port & starboard-**CUSTOM**
- Plexiglas gates from aft deck to platform-**UPGRADE**
- Boarding gates, port and starboard side decks
- Speakers, subwoofer, and volume control integrated with Flybridge stereo
- AC duplex outlets with ground fault protection
- LED lighting in overhead
- Teak high gloss table with stainless steel pedestals-**CUSTOM**

Swim Platform

- Standard platform w/ 18" extension -**UPGRADE**
- Freshwater wash down outlet
- Hand-held shower wand
- Pop-up cleats (2)
- Watertight door to utility room and engine room
- Dockside water inlet with pressure regulating valve
- Reboarding ladder to swim platform

Bow Lounge

- King size sunpad, integrated into the superstructure for privacy and shelter
- Two bench-style seats, 88" long, with cushions-**CUSTOM**
- Stereo speakers with direct feed from the flybridge
- Discrete lighting
- Two moulded-in storage lockers
- Two drink holders
- Stainless steel bow rail for safety and security

Interior

GALLEY / DINETTE

- Durable engineered wood flooring-**CUSTOM**
- Four-burner cooktop w/vent
- Microwave/Convection Combo oven below cooktop

- Dishwasher
- Upright AC refrigerator with freezer and icemaker
- TV on swivel mount-**UPGRADE**
- Speakers, and volume control integrated with salon stereo
- Lounge with storage underneath
- Dinette-wood table with stainless steel pedestal, chairs, throw pillows- **CUSTOM**
- Overhead atrium with panoramic view and accent lighting
- Stone countertops with under mount stainless steel sink and storage cabinets made of finished wood- **CUSTOM**
- Garbage disposal
- Pantograph door, with lock, to side deck - starboard side
- HattCon 7" LED interactive display
- Center island with stone countertops with storage
- China setting for 8, flatware, glassware-**CUSTOM**

SALON

- Durable engineered wood flooring-**CUSTOM**
- Fabric headliner installed on track system-**CUSTOM**
- Privacy blinds- **CUSTOM**
- Fixed frameless windows with tinted safety glass
- Polished stainless steel door to aft deck
- 48" class LED TV
- Entertainment system with Blu-ray and universal remote
- Icemaker
- Dimmable LED lighting
- AC duplex outlets
- Furnishings including sofa, armchair and end table-**CUSTOM**
- HVAC control
- USB charging ports

DAY HEAD

- Durable engineered wood flooring-**CUSTOM**
- Glass mirror above vanity- **CUSTOM**
- Base cabinet with storage and stone top
- Wall covering
- Holding tank 3/4 full indicator light
- Window covering
- Freshwater toilet
- Air freshener blower
- Towel ring and tissue holder

COMPANIONWAY

- Wood flooring-**UPGRADE**
- Fabric headliner installed on track system
- Lighted stairway to galley
- Washer/dryer
- Bilge access

MASTER STATEROOM

- Gun Safe under mattress- **UPGRADE**
- Add'l Safe in closet-**UPGRADE**
- Carpeting-**CUSTOM**
- Fabric headliner installed on track system
- King-sized berth, wood berth base and cedar-lined storage
- Upholstered headboard -**CUSTOM**
- HMC Mattress -**UPGRADE**
- Bunk cover, pillows, shams and linens-**CUSTOM**
- Add'l set of linens-**UPGRADE**
- Cedar lined closet with shelving and automatic lights
- Nightstands w/ Lamps- **CUSTOM**
- Dressers with drawers to port; lounge to starboard
- 40" class LED TV
- Home theater system with Blu-ray and universal remote
- Full length mirror-**UPGRADE**
- Dimmable LED lighting
- DC low level lights under berth
- AC duplex outlets
- Port lights with window coverings, port and starboard
- Smoke and carbon monoxide detectors
- HVAC control
- USB charging ports

MASTER STATEROOM HEAD

- Tiled flooring- **CUSTOM**
- Stone countertop, backsplash, and side splashes with sink
- Solid surface baseboards
- Artistic tile shower wall and floor with frameless door and rainfall shower head- **UPGRADE**
- Fabric headliner installed on track system
- Wall covering
- Storage cabinet with mirror
- Base cabinet to match interior finish with storage
- Towel bar, towel rings, tissue holder, robe hooks
- Freshwater toilet
- Air freshener blower
- Dimmable LED lighting

- AC duplex outlet with ground fault protection
- Air conditioning vent
- Holding tank 3/4 full indicator light

BOW STATEROOM

- Carpeting-**CUSTOM**
- Fabric headliner installed on track system
- Queen berth, wood berth base and cedar-lined storage
- Upholstered headboard-**CUSTOM**
- HMC mattress- **UPGRADE**
- Bunk cover, pillows, shams and linens-**CUSTOM**
- Add'l set of linens-**UPGRADE**
- Cedar lined closet with shelving and automatic lights
- Nightstands
- 32" class LED TV
- DC AM/FM stereo receiver with DVD player, USB port and speakers
- Full length mirror
- Dimmable LED lighting
- DC low level lights under berth
- AC duplex outlets
- Screened overhead hatch with privacy cover
- Portlights with window coverings, port and starboard
- HVAC control
- Smoke and carbon monoxide detector
- USB charging ports

PORT STATEROOM

- Carpeting-**CUSTOM**
- Fabric headliner installed on track system
- Two berths with wood berth bases and cedar lined storage
- HMC mattress- **UPGRADE**
- Bunk cover, pillows, shams and linens-**CUSTOM**
- Cedar lined closet with automatic light
- Nightstand
- 24" class LED TV
- DC AM/FM stereo receiver with DVD player, USB port and speakers
- Full length mirror
- Dimmable LED lighting
- AC duplex outlets
- Port light with window covering
- Smoke and carbon monoxide detector
- HVAC control
- USB charging ports

STARBOARD STATEROOM

- Carpeting-**CUSTOM**
- Fabric headliner installed on track system
- Full berth with wood berth base and storage
- HMC mattress- **UPGRADE**
- Bunk cover, pillows, shams and linens-**CUSTOM**
- Add'l set of linens-**UPGRADE**
- Upholstered headboard-**CUSTOM**
- Cedar lined hanging locker and automatic light
- Nightstand with drawers
- 24" class LED TV
- DC AM/FM stereo receiver with DVD player, USB port and speakers
- Full length mirror
- Dimmable LED lighting
- AC duplex outlets
- Port light with window covering
- Smoke and carbon monoxide detector
- HVAC control
- USB charging ports

GUEST HEADS

- Durable engineered wood flooring
- Wall covering
- Stone countertop, backsplash with sink-**CUSTOM**
- Solid surface baseboards
- Shower with seat, frameless glass door-**UPGRADE**
- Storage cabinet with mirror
- Base cabinet to match interior finish with storage
- Towel bar, towel ring, tissue holder, robe hooks
- Freshwater toilet
- Recirculating fan
- DC LED light fixtures
- AC duplex outlet with ground fault protection
- Air conditioning vent
- Holding tank 3/4 full indicator light

CREW STATEROOM

- Durable engineered flooring
- Fabric headliner installed on track system
- Single berth
- HMC mattress- **UPGRADE**
- Add'l set of linens-**UPGRADE**

- Bunk cover, pillows, shams and linens
- Cedar lined hanging locker with automatic light, nightstand below
- 24" class LED TV
- DC AM/FM stereo receiver with DVD player, USB port and speakers
- Dimmable LED lighting
- AC duplex outlets
- Watertight door from swim platform
- HVAC control
- Smoke and carbon monoxide detector
- HattCON 7" LED interactive display
- USB charging ports

CREW HEAD

- Durable engineered wood flooring
- Wall covering
- Solid surface countertop, backsplash and side splashes with sink
- Solid-surface baseboards
- Shower with glass door
- Storage cabinet with mirror
- Base cabinet to match interior finish with storage
- Towel bar, towel ring, tissue holder, robe hooks
- Freshwater toilet
- 120V AC air freshener blower
- DC LED light fixtures
- AC duplex outlet with ground fault protection
- Air Conditioning vent
- Holding tank 3/4 full indicator light

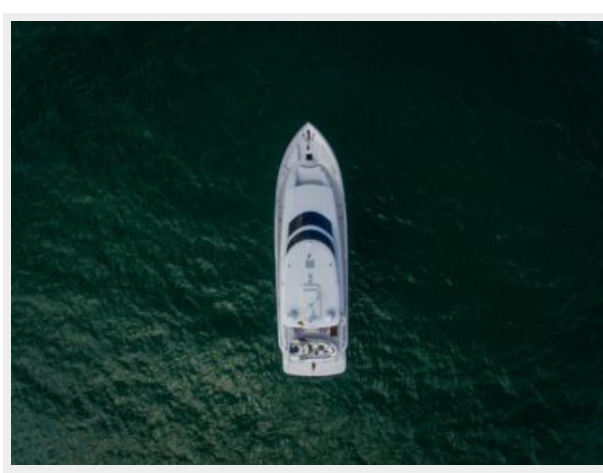
Exclusions

Owner's personal belongings.

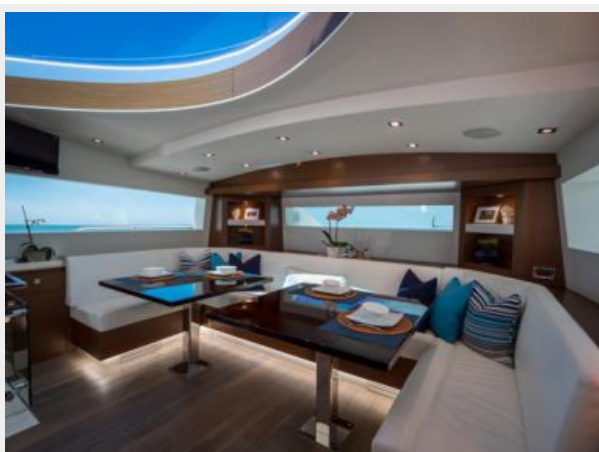
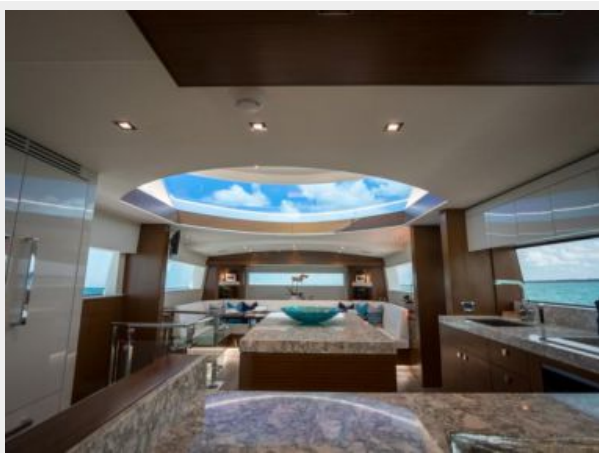
Disclaimer

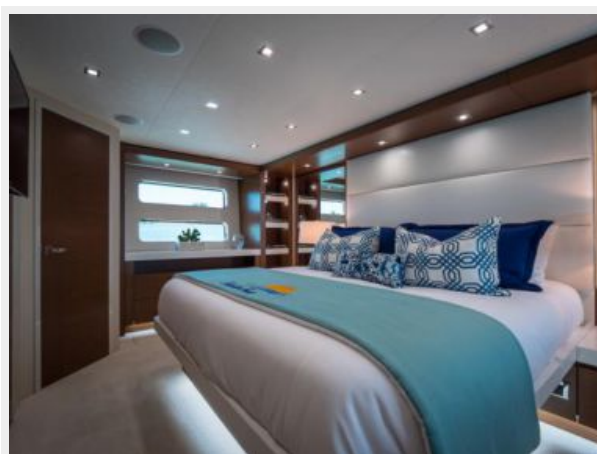
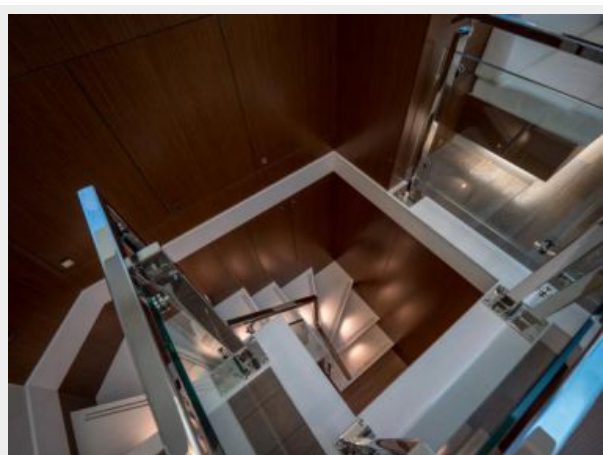
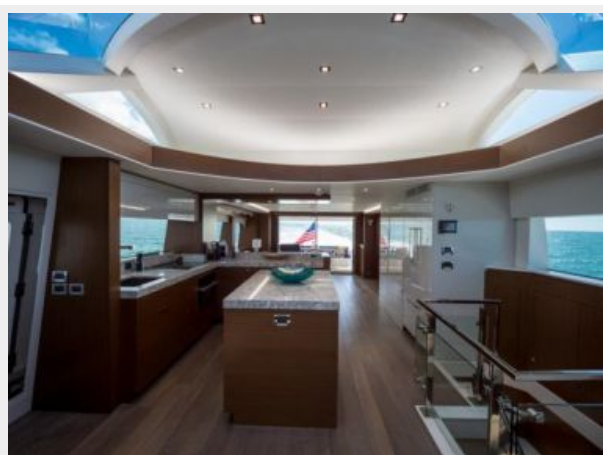
The Company offers the details of this vessel or yacht in good faith but cannot guarantee or warrant the accuracy of this information nor warrant the condition of the vessel. A buyer should instruct his representatives, agents, or his surveyors, to investigate such details as the buyer desires validated. This vessel or yacht is offered subject to prior sale, price change, or withdrawal without notice.

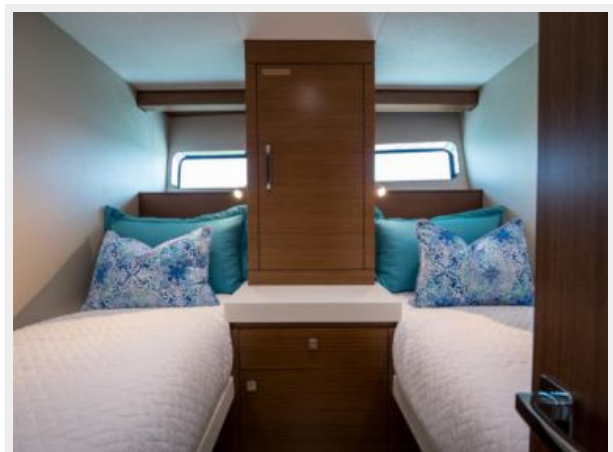
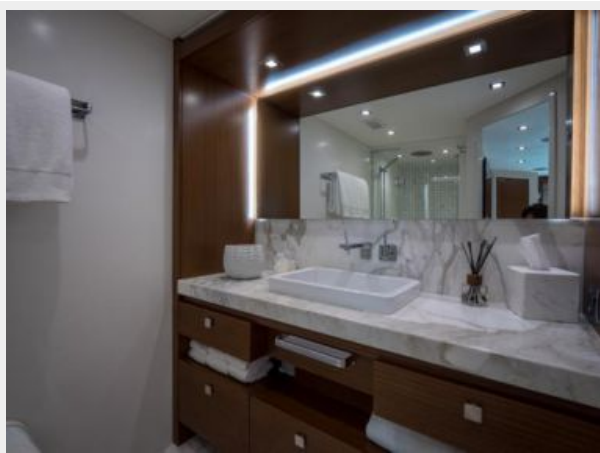
PHOTOS

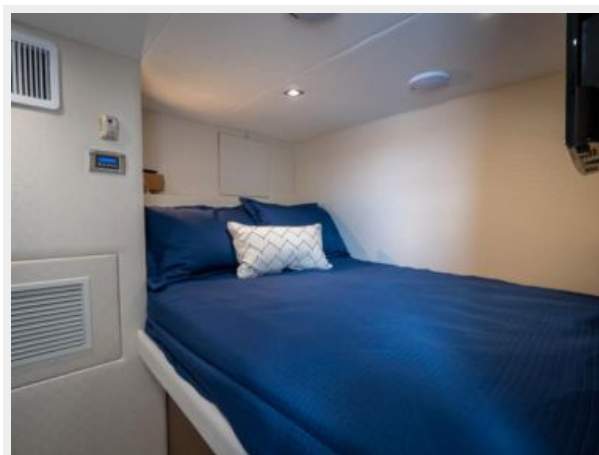
















CONTACTS

Andrey Shestakov, leading yacht broker of the sales department of Shestakov Yacht Sales Inc. Shestakov Yacht Sales Inc., the official representative of the Miami/Fort Lauderdale FL headquarters.

Contact details

Email: **andrey@shestakovyachtsales.com**

Web: shestakovyachtsales.com/en/

Telephones

USA: **+1(954)274-4435**

Office hours

Monday – Saturday: **9:00 - 21:00 EDT**

Sunday: **closed**

Address



Harbour Towne Marina, 850 NE 3rd St,
STE 213, Dania, FL 33004