

EASTBOUND & DOWN — AZIMUT



Builder: AZIMUT

Year Built: 2007

Model: Cruiser

Price: PRICE ON APPLICATION

Location: United States

LOA: 68' 0" (20.73m)

Beam: 16' 8" (5.08m)

Max Draft: 5' 4" (1.63m)

Cruise Speed: 38 Kts. (44 MPH)

Max Speed: 43 Kts. (49 MPH)

Our experienced yacht broker, Andrey Shestakov, will help you choose and buy a yacht that best suits your needs **Eastbound & Down — AZIMUT** from our catalogue. Presently, at Shestakov Yacht Sales Inc., we have a wide variety of yachts available on our sale's list. We also work in close contact with all the big yacht manufacturers from all over the world.

If you would like to buy a yacht **Eastbound & Down — AZIMUT** or would like help answering any questions concerning purchasing, selling or chartering a yacht, please call **+1(954)274-4435**

TABLE OF CONTENTS

TABLE OF CONTENTS	2
SPECIFICATIONS	3
Overview	3
Basic Information	3
Dimensions	3
Speed, Capacities and Weight	4
Accommodations	4
Hull and Deck Information	4
Engine Information	4
DETAILED INFORMATION	5
Manufacturer Provided Description	5
Exclusions	5
Disclaimer	5
PHOTOS	6
CONTACTS	15
Contact details	15
Telephones	15
Office hours	15
Address	15

SPECIFICATIONS

Overview

****Preliminary Listing****

Lowest Priced 2007 68S in the US!

New carpeting

FLIR Camara

New wall covers throughout

All new outside soft goods

All new salon soft goods

All new headliner

1000 Hour services were just performed on her MTU's (1260 Hours) DYSID 3174914

Basic Information

Category: Cruiser

Sub Category: Express

Model Year: 2007

Year Built: 2007

Country: United States

Dimensions

LOA: 68' 0" (20.73m)

Beam: 16' 8" (5.08m)

Max Draft: 5' 4" (1.63m)

Speed, Capacities and Weight

Cruise Speed: 38 Kts. (44 MPH)

Max Speed: 43 Kts. (49 MPH)

Displacement: 72576 Pounds

Water Capacity: 251 Gallons

Fuel Capacity: 845 Gallons

Accommodations

Total Cabins: 3

Total Berths: 3

Total Heads: 3

Hull and Deck Information

Hull Material: Fiberglass

Engine Information

Engines: 2

Manufacturer: MTU

Model: MTU 12V 183 TE94

Engine Type: Inboard

Fuel Type: Diesel

DETAILED INFORMATION

Manufacturer Provided Description

The 68S is definitely a model that will trace a new path, completely separating itself from all other Opens currently on the market. The expressions of Righini will penetrate deeply into the hearts of those who privilege comfort but also love to race the waves. Two 1150cv MTU engines with V-drive transmission for a top speed of between 36 to 38 knots.

Exclusions

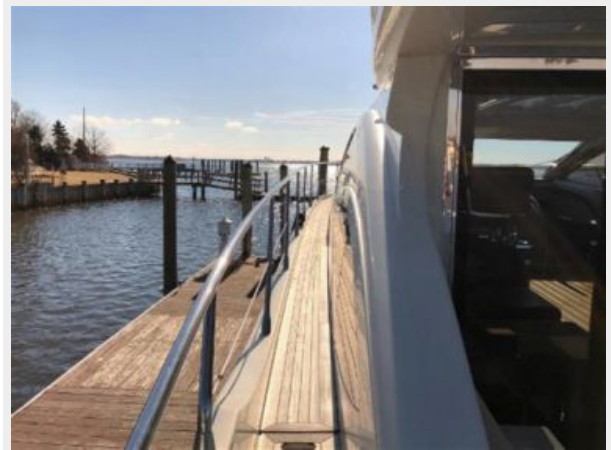
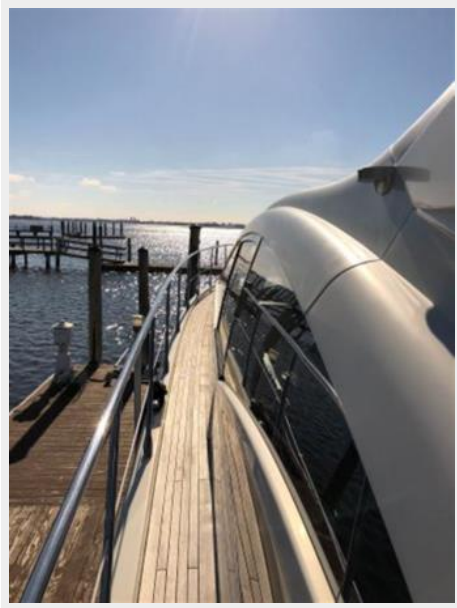
Owner's personal belongings.

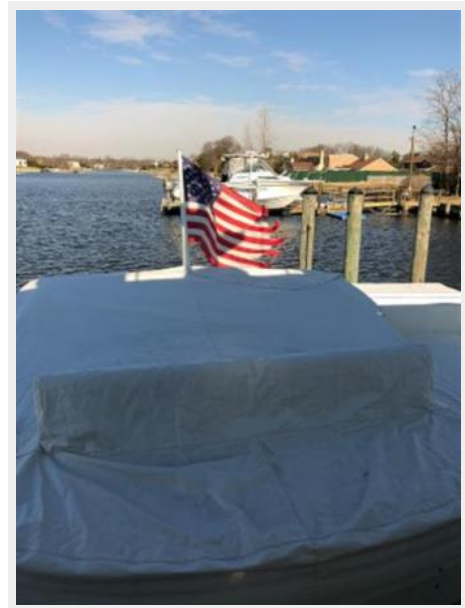
Disclaimer

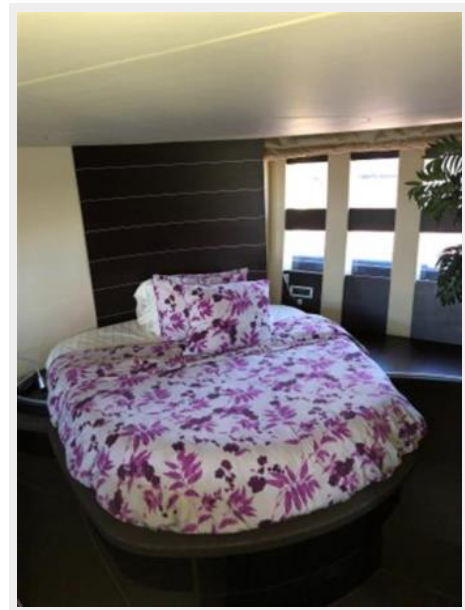
The Company offers the details of this vessel or yacht in good faith but cannot guarantee or warrant the accuracy of this information nor warrant the condition of the vessel. A buyer should instruct his representatives, agents, or his surveyors, to investigate such details as the buyer desires validated. This vessel or yacht is offered subject to prior sale, price change, or withdrawal without notice.

PHOTOS

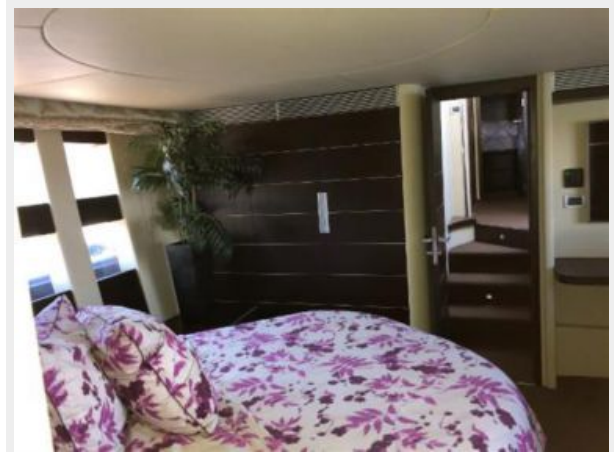


















CONTACTS

Andrey Shestakov, leading yacht broker of the sales department of Shestakov Yacht Sales Inc. Shestakov Yacht Sales Inc., the official representative of the Miami/Fort Lauderdale FL headquarters.

Contact details

Email: andrey@shestakovyachtsales.com

Web: shestakovyachtsales.com/en/

Telephones

USA: +1(954)274-4435

Office hours

Monday – Saturday: **9:00 - 21:00** EDT

Sunday: **closed**

Address



Harbour Towne Marina, 850 NE 3rd St,
STE 213, Dania, FL 33004