

## FINALE — MAINSHIP



**Судостроитель:** MAINSHIP

**Год постройки:** 2007

**Модель:** Траулер

**Цена:** ЦЕНА ЯХТЫ ПО ЗАПРОСУ

**Местонахождение:** United States

**Длина общая:** 34' 0" (10.36m)

**Ширина:** 14' 3" (4.34m)

**Мин. осадка:** 3' 4" (1.02m)

Купить **Finale — MAINSHIP** а также выбрать подходящую вам яхту из нашего каталога яхт вам поможет опытный яхтенный брокер Андрей Шестаков. На сегодняшний день компания **Shestakov Yacht Sales Inc.** имеет большое количество яхт в собственном списке продаж, а также тесно сотрудничает со всеми крупными яхтенными производителями по всему миру.

Для того чтобы купить яхту **Finale — MAINSHIP** а также проконсультироваться по любому вопросу связанному с покупкой, продажей, чартером яхт позвоните по телефону **+7(918)465-66-44**.

# ОГЛАВЛЕНИЕ

ОГЛАВЛЕНИЕ	2
ХАРАКТЕРИСТИКИ	6
Обзор	6
Основная информация	6
Размеры	6
Скорость, вместимость и масса	6
Размещение	7
Корпус и палуба	7
Информация о двигателе	7
ПОДРОБНОЕ ОПИСАНИЕ	8
2007 MAINSHIP 34 COCKPIT	8
2007 MAINSHIP 34 FLYBRIDGE	8
2007 MAINSHIP 34 DECK	8
Additional Units Included	8
2007 MAINSHIP 34 SALON	9
2007 MAINSHIP 34 GALLEY	9
2007 MAINSHIP 34 HEAD	9
2007 MAINSHIP 34 MASTER STATEROOM	9
2007 MAINSHIP 34 ELECTRICAL AND ELECTRONICS	10
2007 MAINSHIP 34 OTHER	10
2007 MAINSHIP 34 EXCLUSIONS	10
2007 MAINSHIP 34 DISCLAIMER	11
Исключения	11
Отказ от ответственности	11
ФОТОГРАФИИ	12
102 Stbd Qtr 1.	12
103 Aft 1.	12
104 Aft Port 1.	12

105 Port Qtr 3.	12
106 Port 1.	12
107 Aft at Dock	13
108 Port Bow Access	13
109 Stbd Bow Access	13
110 Bow	13
111 Moulded Steps to Bridge	14
112 Exit Step	14
113 Bridge Seating Port	14
114 Bridge Seating Stbd	14
116 Bridge Chair	15
115 Bridge Helm	15
117 Bridge Cooler	15
118 Double Doors	15
201 Salon to Forward	15
202 Stbd Chairs & TV	15
203 Stbd Chairs & Helm Station	16
204 Port Sofa & Table	16
205 Liquor Cabinet	16
206 Helm Staton	16
207 Pilot House Door	16
208 Galley from Salon	16
209 Galley	17
210 Cooktop	17
211 Microwave & Sink	17
212 Refrigerator & Freezer Drawers	17
213 Head	17
214 Shower	17
215 Shower Head	18

216 State Room	18
218 Stbd Cabinet	18
217 Drawer Storage	18
301 Bridge Helm	18
219 Port Hanging Locker	18
302 Bridge Seating Layout	19
303 Chart Plotter	19
305 Electrical Panel	19
304 Compass	19
306 Engine Room Access	19
307 Generator	19
309 Gen Racor	20
308 50A Battery Charger	20
310 Gen Fuel Filter	20
311 Battery and Water Pump	20
312 Labeled Overboard and Water Lines	21
313 Battery Bank	21
314 Fuel Tank Sight Glass	21
315 Bilge Pump	21
316 Engine Room	22
317 Engine Stbd Aft	22
319 Engine Fwd	22
318 Engine Stbd	22
321 Engine Room Fire Extinguisher	23
320 Engine Port Fwd	23
<b>КОНТАКТЫ</b>	<b>24</b>
Контактная информация	24
Телефоны	24
Время работы	24

Адрес

---

24

# ХАРАКТЕРИСТИКИ

## Обзор

The Mainship 34 is a production trawler built in northern Florida and southern Georgia by the leading manufacturer of production trawlers. The Mainship 34 is a comfortable, well-appointed trawler that has the ability to attain speeds in the double digits with a unique combination of more support in the aft hull sections and more engine power. The unique lines and appearance of a traditional trawler are still maintained, as well as comfort for long term cruising or entertaining.

The single Yanmar engine makes Finale easy to handle, as well as economical on fuel. The beautiful cream color makes this vessel stand out from the crowd.

The full keel and sand shoe provide extra protection for the props.

Finale is very well maintained, and would be the perfect long-term cruiser for a couple, as well as the perfect weekend get-away boat for a family. This boat is ready to go, just pack your bags.

## Основная информация

**Тип судна:** Траулер

**Модельный год:** 2007

**Год постройки:** 2007

**Страна:** United States

## Размеры

**Длина общая:** 34' 0" (10.36m)

**Ширина:** 14' 3" (4.34m)

**Мин. осадка:** 3' 4" (1.02m)

**Трапы:** 16' 5" (5.00m)

## Скорость, вместимость и масса

**Водоизмещение:** 20000 Pounds

**Вместимость воды:** 70 Gallons

**Вместимость сточного бака:** 30 Gallons

**Объем топливного бака:** 250 Gallons

## Размещение

---

**Всего кают:** 1

**Всего коек:** 2

**Всего ком. состава:** 1

## Корпус и палуба

---

**Материал корпуса:** Fiberglass

**Комплектация корпуса:** Modified V-Hull

## Информация о двигателе

---

**Двигатели:** 1

**Производитель:** Yanmar

**Модель:** 6LPA-STP

**Тип двигателя:** Inboard

**Тип топлива:** Diesel

---

## ПОДРОБНОЕ ОПИСАНИЕ

---

### 2007 MAINSHIP 34 СОСКИТ

---

A transom door from the swim platform makes for easy entrance to the cockpit from floating docks. There are also foldable steps on the inside of the transom which aid in entering the cockpit from either side. The cockpit, which is shaded by the bridge overhang, is large enough for deck chairs, and includes built in storage in the transom. A mounted propane grill is perfect for entertaining. Comfortable sidewalks provide safe access to the bow. There is also a cockpit shower.

There are molded steps to the flybridge. The bottom three steps lift open to provide access to the engine room.

A double door, with full glass inserts, and a convenient screen, opens wide for access into the interior.

### 2007 MAINSHIP 34 FLYBRIDGE

---

The roomy flybridge features three swivel chairs, with new upholstery in November, 2017. The full enclosure with isinglass makes this flybridge comfortable in any weather conditions. A large L-shaped seating area to port is large enough for sunning. A seating area to starboard provides additional room for entertaining. Chart tables flank both sides of the dashboard, and the layout of the flybridge is comfortable for operating Finale from either the sitting or standing position.

There is an open aft deck, with a cooler, that would be perfect to mounting a dinghy. The folding radar arch changes the bridge height to 12' 7".

### 2007 MAINSHIP 34 DECK

---

A starboard side pilot house door leads from the interior to the front deck. The electric windlass was new in November, 2017.

### Additional Units Included

---

2016 Mercury



---

## 2007 MAINSHIP 34 SALON

---

The carpeted salon on Finale is made for comfortable entertaining. There are two neutral swivel bucket chairs to starboard, across from a neutral sleeper sofa to port. A beautiful table, with an easily folded down leaf, is very versatile. The large windows have wood blinds, and the double doors to the cockpit have easy to open and close room darkening curtains, which can be tied back.

There is also a clever cabinet to port which makes a great liquor cabinet with its insert that holds bottles upright.

The inside helm, to starboard, is available for inclement weather, and the pilot house door provides additional access to the bow or cockpit. The windshield has a center opening panel, and all three windows are covered with canvas covers. There is a large area behind the helm, which provides an area for charts or stowage.

The electric panel is to starboard, behind a 40" flat screen TV, which is free standing.

---

## 2007 MAINSHIP 34 GALLEY

---

The galley is forward to port, down two steps. The easy to clean flooring has a teak and holly sole appearance. There is a microwave oven, a two burner ceramic cook top, a stainless steel sink, Corian countertops, and stainless steel drawer style refrigerator/freezer. This is ample cabinet storage, including two lined lockers in the floor and a trash can locker.

---

## 2007 MAINSHIP 34 HEAD

---

The head is across from the galley, to starboard, and is accessible from both the salon and the master stateroom. The opening portlight provides both light and ventilation. It is well appointed with a vanity with a Corian countertop, toilet, mirror, and large smoked glass shower.

---

## 2007 MAINSHIP 34 MASTER STATEROOM

---

The center line berth has good access on both sides. There is a cabinet with wood top to starboard, and a double, cedar lined hanging locker to port over a fold down storage cabinet. Drawers under the bed add to the stowage capabilities. Two opening portlights allow for both light and ventilation. The large ceiling hatch has two integrated shades, which can allow in light

or darken the berth.

---

## 2007 MAINSHIP 34 ELECTRICAL AND ELECTRONICS

---

- Bow Thruster
- Kohler 8kw generator
- 40? Flat Screen TV
- Raymarine Auto Pilot ? Upper Helm
- Raymarine Auto Pilot Remote ? Lower Helm
- Raymarine E-130 GPS (2)
- Raymarine Radar
- Raymarine VHS
- Back Up Camera
- Compass
- Depth sounder
- Battery Charger
- Satellite TV
- Remote Spotlight
- Batteries Replaced February, 2016
- 2 Zone Reverse Cycle Heat/AC

---

## 2007 MAINSHIP 34 OTHER

---

Finale had a complete bottom paint job in November 2016, and is professionally cleaned monthly by a diver. All of the sacrificial anodes (zincs) have been replaced as needed.

---

## 2007 MAINSHIP 34 EXCLUSIONS

---

### Personal items

---

---

## 2007 MAINSHIP 34 DISCLAIMER

---

The Company offers the details of this vessel in good faith but cannot guarantee or warrant the accuracy of this information nor warrant the condition of the vessel. A buyer should instruct his agents, or his surveyors, to investigate such details as the buyer desires validated. This vessel is offered subject to prior sale, price change, or withdrawal without notice.

---

## Исключения

---

При продаже яхты исключаются личные вещи владельца.

---

## Отказ от ответственности

---

Компания предоставляет описание судна или яхты добросовестно, но не может гарантировать точность этой информации, а также не ручается за техническое состояние. Покупатель должен проинструктировать своих агентов или оценщиков исследовать представленную информацию более подробно, по собственному желанию. Продажа судна или яхты, изменение цены или снятие с продажи будет происходить без предварительного уведомления.

# ФОТОГРАФИИ

102 Stbd Qtr 1.



103 Aft 1.



104 Aft Port 1.



105 Port Qtr 3.



106 Port 1.



**107 Aft at Dock**



**108 Port Bow Access**



**109 Stbd Bow Access**



**110 Bow**



**111 Moulded Steps to Bridge**



**112 Exit Step**



**113 Bridge Seating Port**



**114 Bridge Seating Stbd**





**115 Bridge Helm**



**116 Bridge Chair**



**117 Bridge Cooler**



**118 Double Doors**



**201 Salon to Forward**



**202 Stbd Chairs & TV**



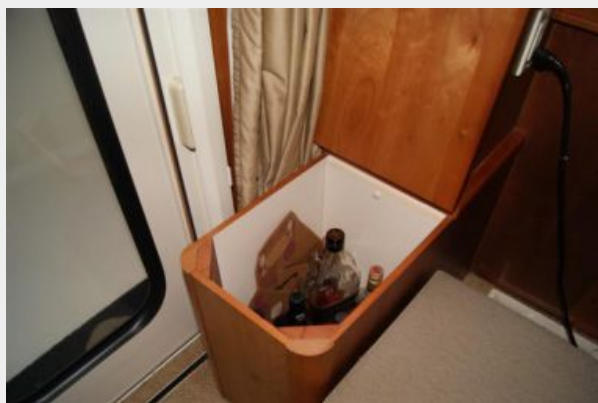
**203 Stbd Chairs & Helm Station**



**204 Port Sofa & Table**



**205 Liquor Cabinet**



**206 Helm Station**



**207 Pilot House Door**



**208 Galley from Salon**





**209 Galley**



**210 Cooktop**



**211 Microwave & Sink**



**212 Refrigerator & Freezer Drawers**



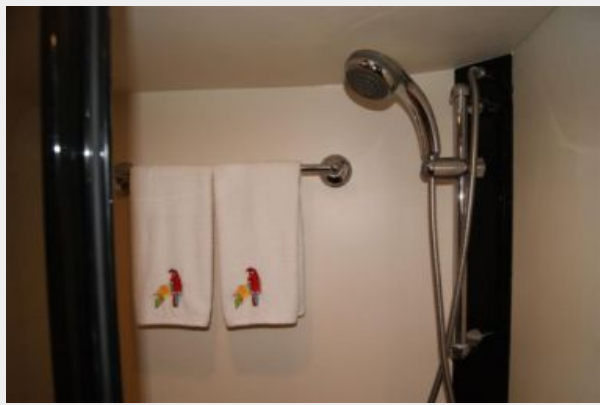
**213 Head**



**214 Shower**



**215 Shower Head**



**216 State Room**



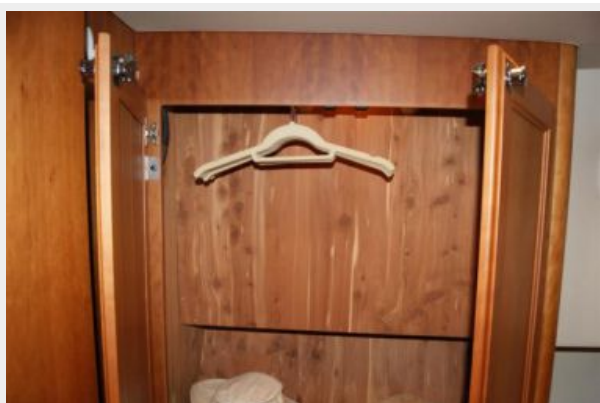
**217 Drawer Storage**



**218 Stbd Cabinet**



**219 Port Hanging Locker**



**301 Bridge Helm**



**302 Bridge Seating Layout**



**303 Chart Plotter**



**304 Compass**



**305 Electrical Panel**



**306 Engine Room Access**



**307 Generator**





**308 50A Battery Charger**



**309 Gen Racor**



**310 Gen Fuel Filter**



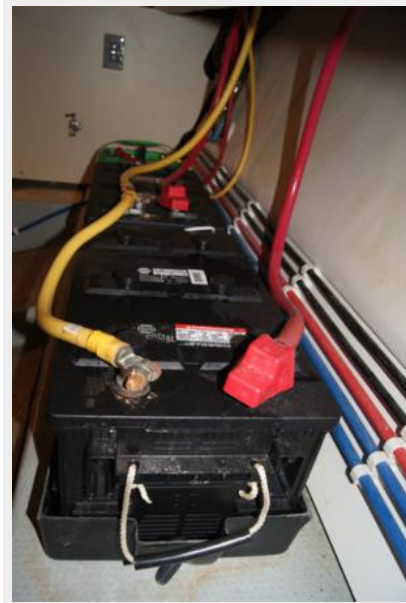
**311 Battery and Water Pump**



### 312 Labeled Overboard and Water Lines



### 313 Battery Bank



### 314 Fuel Tank Sight Glass



### 315 Bilge Pump



**316 Engine Room**



**317 Engine Stbd Aft**



**319 Engine Fwd**



**318 Engine Stbd**



## 321 Engine Room Fire Extinguisher

### 320 Engine Port Fwd





# КОНТАКТЫ

---

Андрей Шестаков (Andrey Shestakov) – ведущий яхтенный брокер отдела продаж яхт и судов компании Shestakov Yacht Sales Inc. Официальный представитель Shestakov Yacht Sales Inc. для русскоговорящих клиентов в центральном офисе компании в Майами/Форт Лодердейл/Флорида/США.

## Контактная информация

---

Email: [andrey@shestakovyachtsales.com](mailto:andrey@shestakovyachtsales.com)

Web: [shestakovyachtsales.com](http://shestakovyachtsales.com)

## Телефоны

---

Краснодарский край: **+7(918)465-66-44**

США, Майами, Флорида: **+1(954)274-4435**

## Время работы

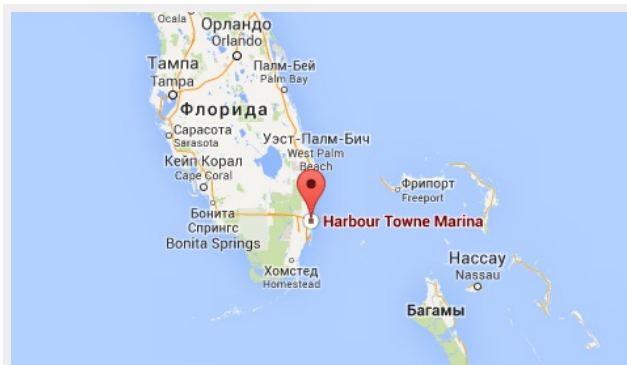
---

Понедельник – Суббота: **9:00 - 21:00**  
EDT

Воскресенье: **Закрето**

## Адрес

---



Harbour Towne Marina, 850 NE 3rd St,  
STE 213, Dania, FL 33004