

SEAGAR LIFE — PURSUIT



Builder: PURSUIT

Year Built: 2004

Model: Cruiser

Price: PRICE ON APPLICATION

Location: United States

LOA: 30' 0" (9.14m)

Beam: 10' 6" (3.20m)

Min Draft: 1' 6" (0.46m)

Max Draft: 2' 9" (0.84m)

Our experienced yacht broker, Andrey Shestakov, will help you choose and buy a yacht that best suits your needs **Seagar Life — PURSUIT** from our catalogue. Presently, at Shestakov Yacht Sales Inc., we have a wide variety of yachts available on our sale's list. We also work in close contact with all the big yacht manufacturers from all over the world.

If you would like to buy a yacht **Seagar Life — PURSUIT** or would like help answering any questions concerning purchasing, selling or chartering a yacht, please call **+1(954)274-4435**

TABLE OF CONTENTS

TABLE OF CONTENTS	2
SPECIFICATIONS	3
Overview	3
Basic Information	3
Dimensions	3
Speed, Capacities and Weight	3
Accommodations	3
Hull and Deck Information	4
Engine Information	4
DETAILED INFORMATION	5
Manufacturer Provided Description	5
Electronics & Equipment	5
Inside Equipment	6
Exclusions	6
Disclaimer	6
PHOTOS	7
CONTACTS	12
Contact details	12
Telephones	12
Office hours	12
Address	12

SPECIFICATIONS

Overview

This boat is turn the key ready for a perfect for a day out on the water with friends and family, but can also be used for an overnight trip to the Bahamas. The boat is comfortable to stay on if you are doing an overnight trip, but not difficult to keep up with and maintain. Comes powered with twin Yamaha 225s with 825 hours on them. The boat was just equipped with BRAND NEW Garmin radar and a Garmin Plotter. She is located in Miami and is easy to see.. Give me a call for more information!

Basic Information

Category: Cruiser

Model Year: 2004

Year Built: 2004

Country: United States

Dimensions

LOA: 30' 0" (9.14m)

Beam: 10' 6" (3.20m)

Min Draft: 1' 6" (0.46m)

Max Draft: 2' 9" (0.84m)

Clearance: 10' 6" (3.20m)

Speed, Capacities and Weight

Displacement: 8200 Pounds

Water Capacity: 30 Gallons

Holding Tank: 18 Gallons

Fuel Capacity: 310 Gallons

Accommodations

Total Heads: 1

Hull and Deck Information

Hull Material: Fiberglass

Hull Configuration: Deep Vee

Engine Information

Engines: 2

Manufacturer: Yamaha

Engine Type: Outboard

Fuel Type: Gas/Petrol

DETAILED INFORMATION

Manufacturer Provided Description

The Pursuit 3070 Offshore combines Express-style features with outboard power, creating a handsome, rugged performance package just as comfortable in open seas as it is cruising inland waters. The upper deck is centered by a custom welded, brushed aluminum windshield, stylishly designed, fully functional from the bridge, and complete with ventilating side windows. A wide, flush deck walkaround area enables easy access from the spacious cockpit to the forward bow. The ladder back helm seat is electronically controlled and conveniently located starboard, allowing a central entry to the cabin. A portside L-lounge is designed for relaxing and taking full advantage of the entertainment center, with optional icemaker, aft of the helm. An electronic lift of the bridgedeck reveals access to a lighted rod and gear storage area. The top deck is finished with cockpit coaming bolsters, a retractable rear lounge seat, a generous cooler aft, an insulated livewell, and a floor-mounted fishbox with a macerated overboard drain, and a practical transom door. The cabin features a teak dinette-style table and seating configuration with a cozy V-berth forward and a smaller diagonal berth amidship with storage beneath. The galley is complete with Corian counters, a microwave, an AC/DC refrigerator, and a stainless sink. A full, stand-up shower, vanity mirror and storage, plus a fully framed door are features of the VacuFlush head compartment. Teak and maple flooring throughout and decorator fabrics finish the 3070 interior with elegance and functionality.

Electronics & Equipment

- New Garmin Gps (2017)
- New Garmin Plotter (2017)
- JL Radio
- JL Cockpit Speakers
- Log- speedometer
- Depth Sounder
- Nav Center
- Icom VHF
- Compass
- Simrad autopilot
- Profish 1100 Windless

Inside Equipment

- Electric Bilge Pump
- A/C
- Marine Head
- Battery Charger

Exclusions

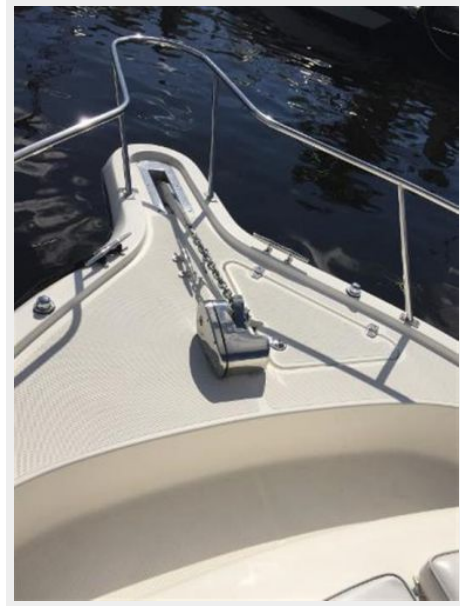
Owner's personal belongings.

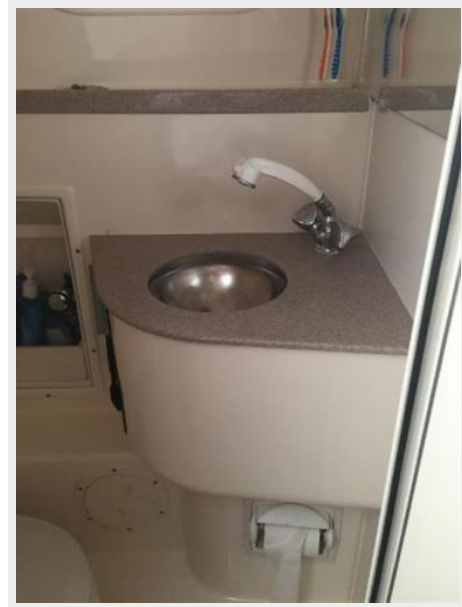
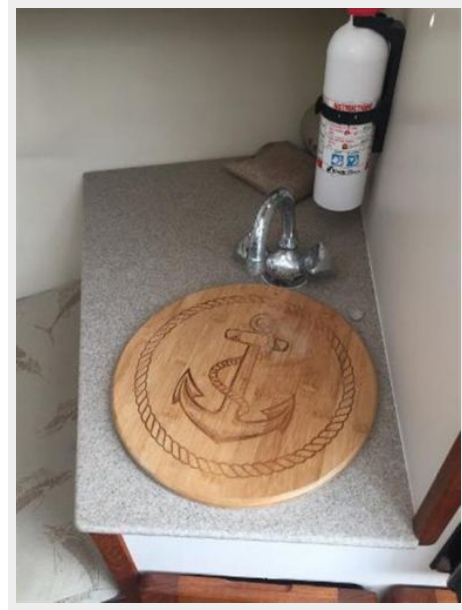
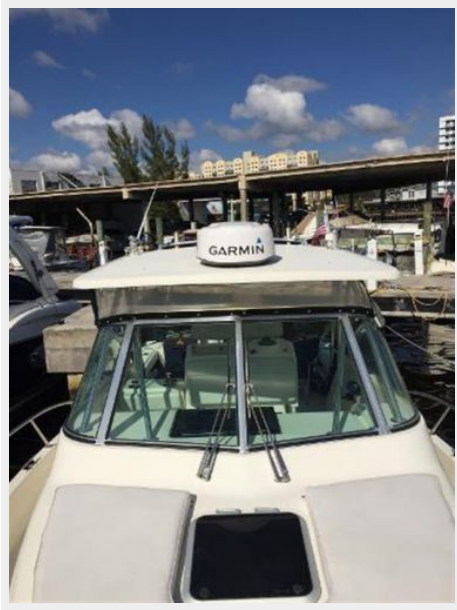
Disclaimer

The Company offers the details of this vessel or yacht in good faith but cannot guarantee or warrant the accuracy of this information nor warrant the condition of the vessel. A buyer should instruct his representatives, agents, or his surveyors, to investigate such details as the buyer desires validated. This vessel or yacht is offered subject to prior sale, price change, or withdrawal without notice.

PHOTOS











CONTACTS

Andrey Shestakov, leading yacht broker of the sales department of Shestakov Yacht Sales Inc. Shestakov Yacht Sales Inc., the official representative of the Miami/Fort Lauderdale FL headquarters.

Contact details

Email: andrey@shestakovyachtsales.com

Web: shestakovyachtsales.com/en/

Telephones

USA: +1(954)274-4435

Office hours

Monday – Saturday: **9:00 - 21:00** EDT

Sunday: **closed**

Address



Harbour Towne Marina, 850 NE 3rd St,
STE 213, Dania, FL 33004