

JAYANA — BENETEAU



Builder: BENETEAU

LOA: 50' 0" (15.24m)

Year Built: 2012

Beam: 15' 11" (4.85m)

Model: Cruising Sailboat

Min Draft: 5' 8" (1.73m)

Price: PRICE ON APPLICATION

Location: United States

Our experienced yacht broker, Andrey Shestakov, will help you choose and buy a yacht that best suits your needs **Jayana — BENETEAU** from our catalogue. Presently, at Shestakov Yacht Sales Inc., we have a wide variety of yachts available on our sale's list. We also work in close contact with all the big yacht manufacturers from all over the world.

If you would like to buy a yacht **Jayana — BENETEAU** or would like help answering any questions concerning purchasing, selling or chartering a yacht, please call **+1(954)274-4435**

TABLE OF CONTENTS

TABLE OF CONTENTS	2
SPECIFICATIONS	4
Overview	4
Basic Information	5
Dimensions	5
Speed, Capacities and Weight	5
Accommodations	5
Hull and Deck Information	6
Engine Information	6
DETAILED INFORMATION	7
Manufacturer Provided Description	7
Exclusions	7
Disclaimer	7
PHOTOS	8
Beautiful anchorage and great view of the solar panels	8
Mast head view	8
Parasailor looking great	8
Pristine anchorage	8
Code 0 on port tack	8
Port tack going fast with Parasailor	8
Starboard side Beneteau logo	9
Somewhere	9
Manufacturer Provided Image: 3 Cabin Layout	9
Saloon port side convertible table	9
Detail showing the large convertible table and chart table	9
Salon looking towards the starboard side	9
Chart table showing Fusion MS-AV700i, Icom VHF and Icom SSB	10
Salon	10

Custom installed Fisher and Paykel dishwasher	10
Indirect lighting in the saloon, can be any color or intensity.	10
Owners stateroom	10
Port side cabin	10
Flying the code 0	11
Head with separate shower	11
Mid Ocean on starboard tack	11
Flying the Parasailor, a great sail !	11
The good weather returns	12
A new day.	12
Mid Ocean drying the Laundry dries fast in the breeze.	12
Nice heel, the dinghy on the davits looks great.	12
Nice catch in mid Ocean	13
On anchor in the Azores. Port Lajes, Flores. Jayana is on the far right.	13
Ultra UA-35 stainless primary anchor	13
CONTACTS	14
Contact details	14
Telephones	14
Office hours	14
Address	14

SPECIFICATIONS

Overview

This Sense 50 was delivered to the current owner in 2012. The owner prepared this Yacht for his serious offshore passages by upgrading and adding many systems. She then sailed from Florida to Greece and after a few years returned to Florida. Jayana has all the safety equipment required for long distance traveling (she participated in the ARC) and with all the comfort that you would expect at home. Be sure to watch the high-quality movie " Jayana for Sale".

Factory options: Dock & Go system with the latest software, stern arch with davits, chilled water air conditioning 24000 BTU, 7.5KW generator, 3-cabin layout, shallow draft, sensation trim, 4X electric winches, TV on electric lift, additional fuel tank, ultra leather upholstery, microwave, 2X quiet flush heads. Raymarine equipment: e95 helm station, e120w chart table, AIS, depth/speed and wind, convertible saloon table, 110V electricity, folding prop, cockpit cushions.

Other options: Achilles 315DX RIB with 20HP Tohatsu and Euro helm and a depth sounder, Spectra watermaker 13G/hr, Main anchor is Ultra UA-35, Spade is the secondary anchor, 1000W solar panels, AGM batteries X7 total compacity is 1386 amp/hr, 2X ProNautic 60 battery chargers, Tempur-Pedic mattress, 5:1 home theater system, Cambridge audio speakers, TV series 6 Samsung 32" on lift system, audio Fusion MS-AV700i, Fisher Paykel dishwasher custom installed, Samsung washing machine custom installed in port shower with large storage space, RGB ambient lighting allowing for any color and intensity, full canvas with side shades, ICOM M604 VHF, Icom M802 HF SSB and Pactor modem for email, long range Wifi antenna, inboard router, Seataalk <-> Wifi bridge, Waterchef water filtration faucet, 110V/220V shore power, Plastimo certified liferaft, inflatable danbuoy, propane and butane gas connectors for USA and Europe.

Rigging/Sail plan: Full battened mainsail, genoa on furler, staysail on furler and easy sail track, code 0 with UV protection, Para sailer 2228 sq/ft, new very strong double sheave block installed for 2 spinnaker halyards, adjustable back stay.

- RIB Achilles HB315DX w/20HP Tohatsu electric start, Euro helm and depth sounder
- Solar panels 1000W on extreme low profile powder coated aluminum brackets, 4X Aurinco 110W ea. and 5X112W ea. Solbian flexible panels on Bimini
- Generator 7.5 Onan KW
- 2000W inverter
- Batteries: 7 AGM batteries total capacity 1386 amp/hr
- Electric blinds and motorized companionway door
- 3 zones 24000 BTU chilled water system
- Watermaker Spectra Catalina 300 13G/hr
- Dishwasher custom installed Fisher Paykel
- Washing machine Samsung and storage cabinet custom installed in aft head can be easily removed.

- SSB Icom M802HF with Pactor modem for email
- TV Samsung series 6 1080p, 5:1 surround sound, Cambridge speakers, Clarion 1000W amplifier. Video feed with Apple TV a decoder with 4HDMI inputs
- Fusion MS-AV700i radio w/Bluetooth and SiriusXM modules.
- Wifi: Apple airport extreme router, a ubiquityBullet/M microcomputer is hooked to a 9db omnidirectional antenna.
- 110V and 220V shore power capability
- USA propane and European butane gas connectors
- Plastimo 54561 offshore 4 person liferaft in valise inspected, Good to June 2020
- Ultra UA-35 Stainless steel anchor

DYSID:3115252

Basic Information

Category: Cruising Sailboat

Model Year: 2012

Year Built: 2012

Country: United States

Dimensions

LOA: 50' 0" (15.24m)

LWL: 46' 1" (14.05m)

Beam: 15' 11" (4.85m)

Min Draft: 5' 8" (1.73m)

Clearance: 75' 7" (23.04m)

Speed, Capacities and Weight

Displacement: 33720 Pounds

Water Capacity: 151 Gallons

Holding Tank: 30 Gallons

Fuel Capacity: 220 Gallons

Accommodations

Total Cabins: 3

Total Berths: 4

Total Heads: 2

Hull and Deck Information

Hull Material: Fiberglass

Hull Configuration: Monohull

Engine Information

Engines: 1

Manufacturer: Yanmar

Engine Type: Inboard

Fuel Type: Diesel

DETAILED INFORMATION

Manufacturer Provided Description

SENSE blends simplicity with refinement. By applying the latest trends in contemporary design to each of its living spaces, both below and above deck, this yacht lets you indulge in the true pleasures of yachting.

Exclusions

Owner's personal belongings.

Disclaimer

The Company offers the details of this vessel or yacht in good faith but cannot guarantee or warrant the accuracy of this information nor warrant the condition of the vessel. A buyer should instruct his representatives, agents, or his surveyors, to investigate such details as the buyer desires validated. This vessel or yacht is offered subject to prior sale, price change, or withdrawal without notice.

PHOTOS

Beautiful anchorage and great view of the solar panels



Mast head view



Pristine anchorage



Parasailor looking great



Port tack going fast with Parasailor



Code 0 on port tack



Somewhere



Starboard side Beneteau logo



Manufacturer Provided Image: 3 Cabin Layout



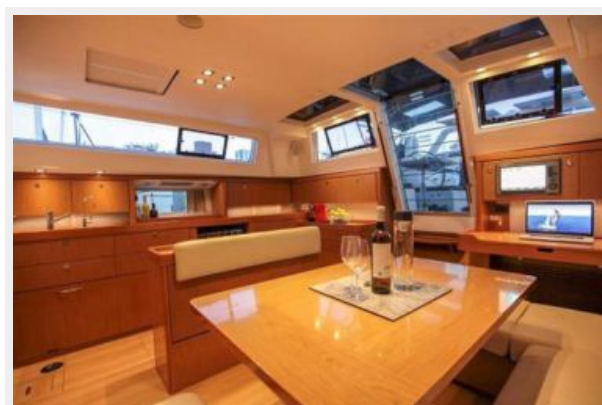
Saloon port side convertible table



Detail showing the large convertible table and chart table



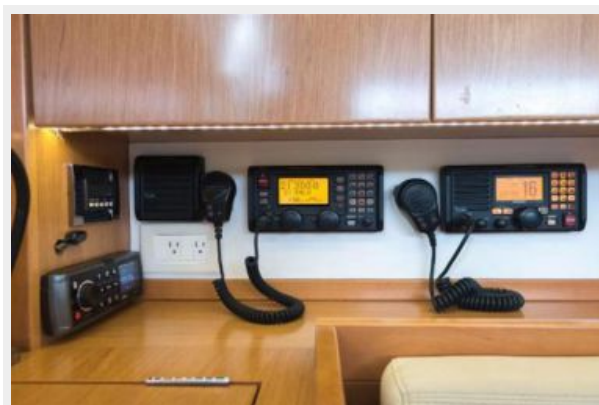
Salon looking towards the starboard side



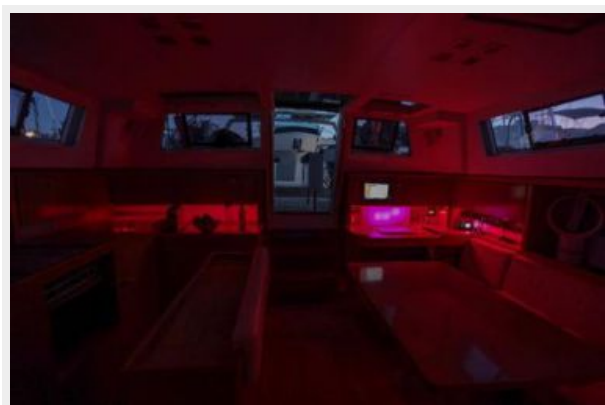
Salon



Chart table showing Fusion MS-AV700i, Icom VHF and Icom SSB



Indirect lighting in the saloon, can be any color or intensity.



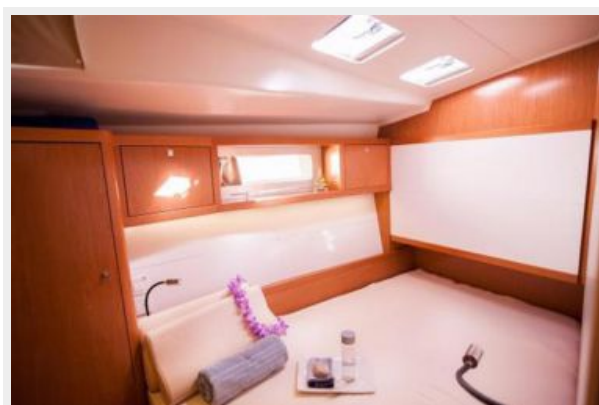
Custom installed Fisher and Paykel dishwasher



Owners stateroom



Port side cabin



Head with separate shower



Flying the code 0



Flying the Parasailor, a great sail !



Mid Ocean on starboard tack



The good weather returns



A new day.



Mid Ocean drying the Laundry dries fast in the breeze.



Nice heel, the dinghy on the davits looks great.



Nice catch in mid Ocean



**On anchor in the Azores. Port Lajes, Flores.
Jayana is on the far right.**



Ultra UA-35 stainless primary anchor



CONTACTS

Andrey Shestakov, leading yacht broker of the sales department of Shestakov Yacht Sales Inc. Shestakov Yacht Sales Inc., the official representative of the Miami/Fort Lauderdale FL headquarters.

Contact details

Email: **andrey@shestakovyachtsales.com**

Web: shestakovyachtsales.com/en/

Telephones

USA: **+1(954)274-4435**

Office hours

Monday – Saturday: **9:00 - 21:00 EDT**

Sunday: **closed**

Address



Harbour Towne Marina, 850 NE 3rd St,
STE 213, Dania, FL 33004